

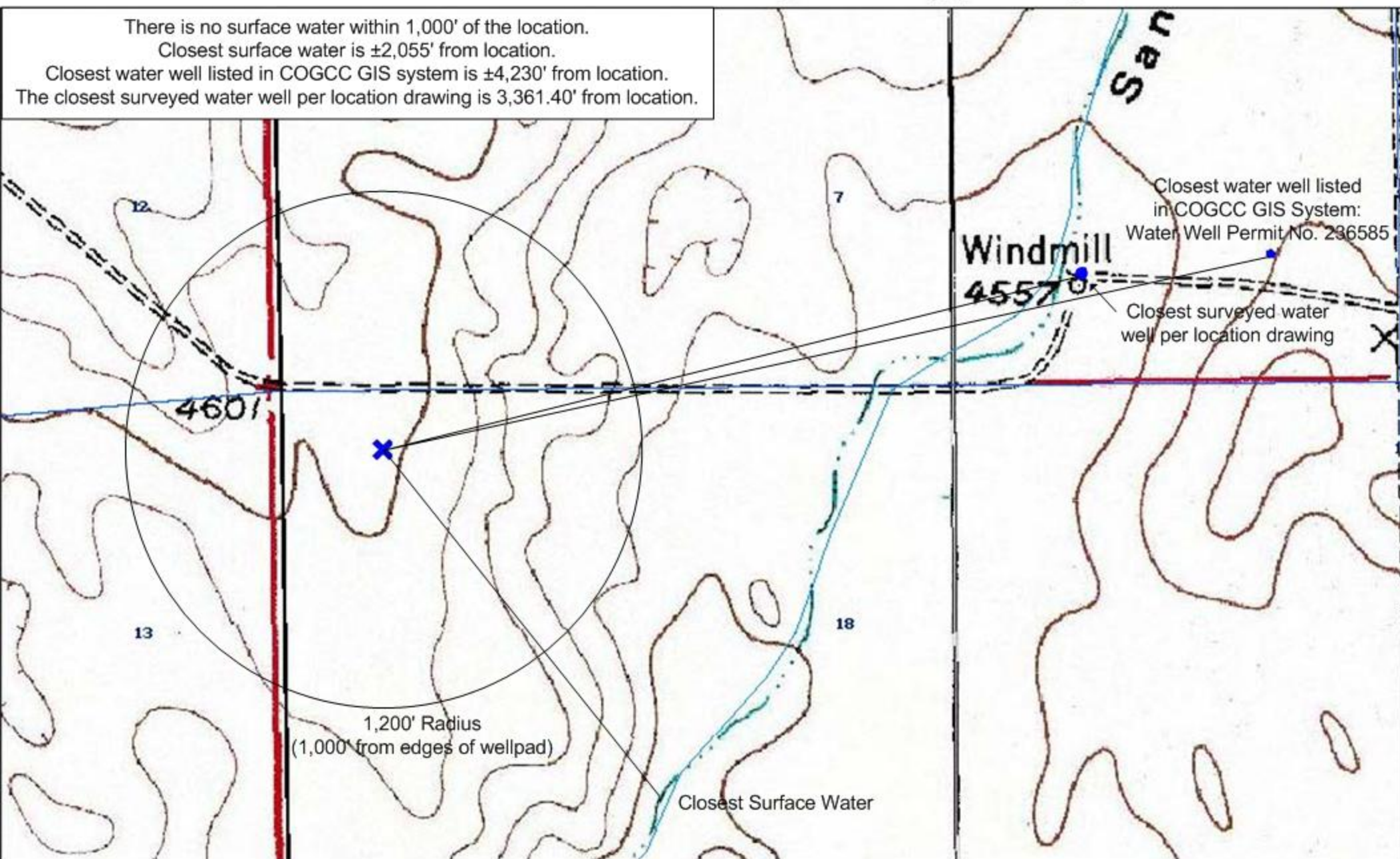
# Sandborn 05-18H Hydrology Map

There is no surface water within 1,000' of the location.

Closest surface water is  $\pm 2,055'$  from location.

Closest water well listed in COGCC GIS system is  $\pm 4,230'$  from location.

The closest surveyed water well per location drawing is 3,361.40' from location.



SCALE 1 : 7,147

