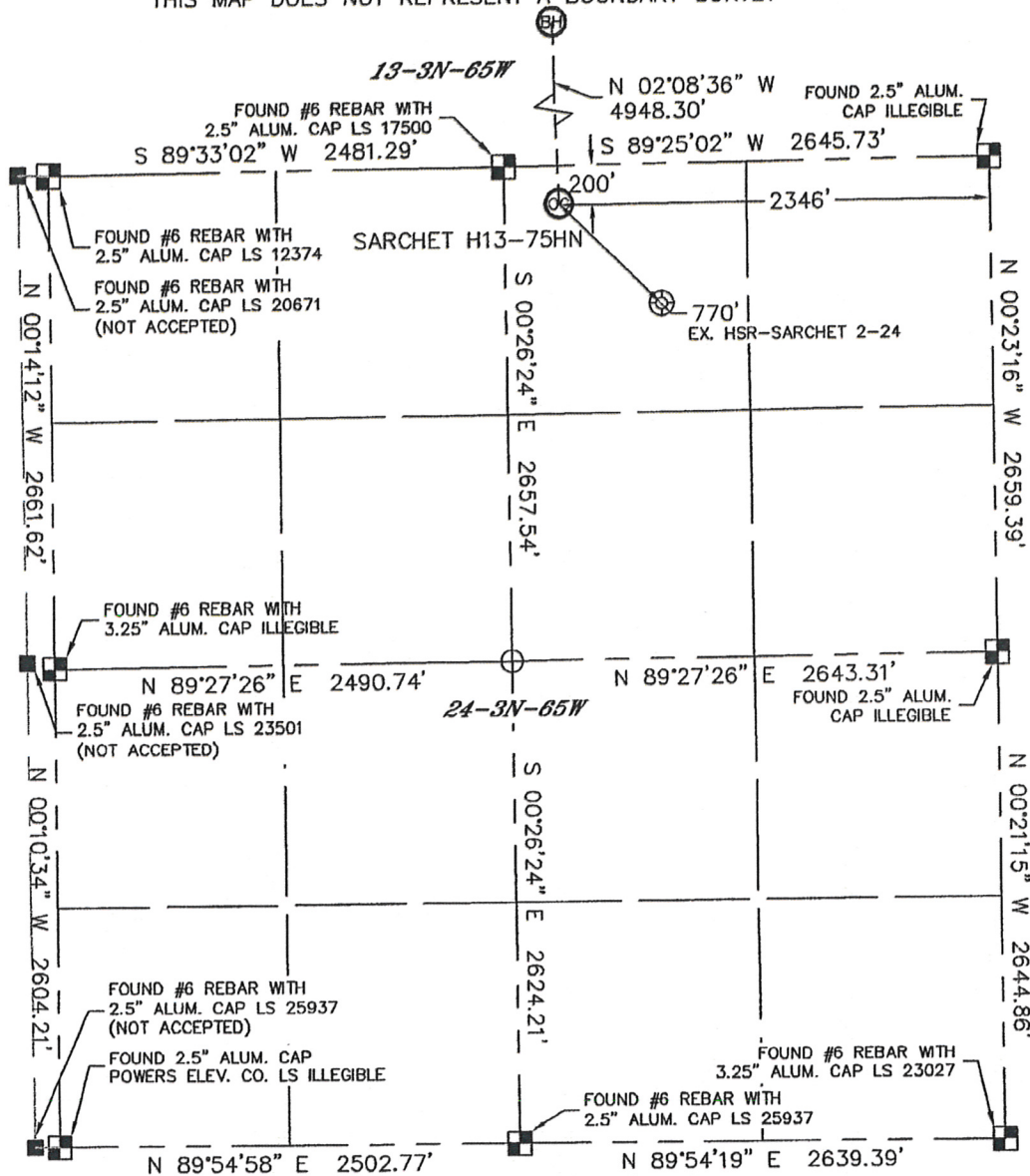


WELL LOCATION CERTIFICATE

THIS MAP DOES NOT REPRESENT A BOUNDARY SURVEY

SECTION: 24
TOWNSHIP: 3N
RANGE: 65W



In accordance with a request from Erik Van Decar with Noble Energy Inc., Lat40°, LLC has determined the surface location of the SARCHET H13-75HN to be 200' from the NORTH line and 2346' from the EAST line as measured at right angles from the section lines of Section 24, Township 3 North, Range 65 West and the bottom hole to be 535' from the NORTH line and 2500' from the EAST line as measured at right angles from the section lines of Section 13, Township 3 North, Range 65 West of the Sixth Principal Meridian, County of Weld, State of Colorado.

I hereby state that this Well Location Certificate was prepared by me, or under my direct supervision, that the fieldwork was completed on 1/11/11, for and on behalf of Noble Energy Inc. That this is not a Land Survey Plat or an Improvement Survey Plat, and that it is not to be relied upon for establishment of fence, building, or other future improvement lines.

SURFACE LOCATION	BOTTOM HOLE
LATITUDE: 40.21740°N	LATITUDE: 40.23097°N
LONGITUDE: 104.61107°W	LONGITUDE: 104.61155°W
PDOP: 1.7	
ELEV: 4834	
1/4, 1/4: NW1/4NE1/4	
NEAREST PROPERTY LINE: 200' NORTH	

NOTE:

- 1) Bearings shown are Grid Bearings of the Colorado State Plane Coordinate System, North Zone, North American Datum 1983/2007. The lineal dimensions as contained herein are based upon the "U.S. Survey Foot."
- 2) Ground elevations are based on an observed GPS elevation (NAVD 1988 DATUM).
- 3) NEAREST EXISTING WELL: HSR-SARCHET 2-24 770'
- 4) IMPROVEMENTS: See LOCATION DRAWING for all visible improvements within 400' of disturbed area.
- 5) SURFACE USE: PASTURE
- 6) INSTRUMENT OPERATOR: ADAM KELLY

NOTE

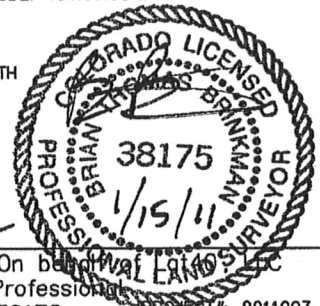
According to Colorado law, you must commence any legal action based upon any defect in this W.L.C. within three years after you discover such defect. In no event, may any action based upon any defect in this survey be commenced more than ten years after the date of the certificate shown hereon. (13-80-105 C.R.S.)

LEGEND

- = ALIQUOT MONUMENT AS DESCRIBED
- = CALCULATED POSITION

SHEET 1 of 2

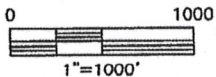
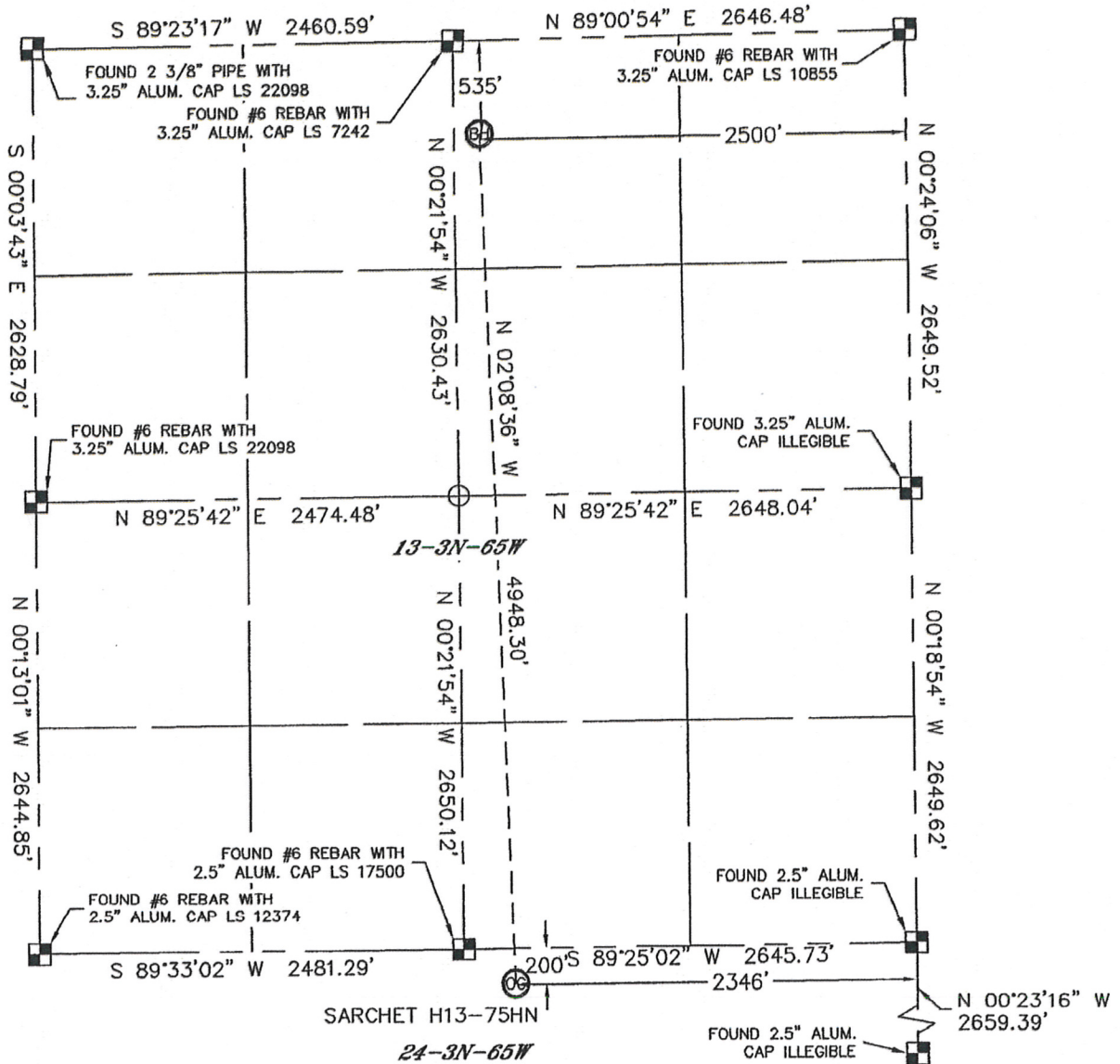
Brian T. Brinkman—On behalf of Lat40° LLC
Colorado Licensed Professional
Land Surveyor No. 38175
PROJECT #: 2011003



WELL LOCATION CERTIFICATE

THIS MAP DOES NOT REPRESENT A BOUNDARY SURVEY

SECTION: 24
TOWNSHIP: 3N
RANGE: 65W



NOTE

According to Colorado law, you must commence any legal action based upon any defect in this W.L.C. within three years after you discover such defect. In no event, may any action based upon any defect in this survey be commenced more than ten years after the date of the certificate shown hereon. (13-80-105 C.R.S.)

LEGEND

- = ALIQUOT MONUMENT AS DESCRIBED
- = CALCULATED POSITION

SHEET 2 OF 2

Brian T. Brinkman—On behalf of Lat40°, LLC
Colorado Licensed Professional
Land Surveyor No. 38175

PROJECT#: 2011003



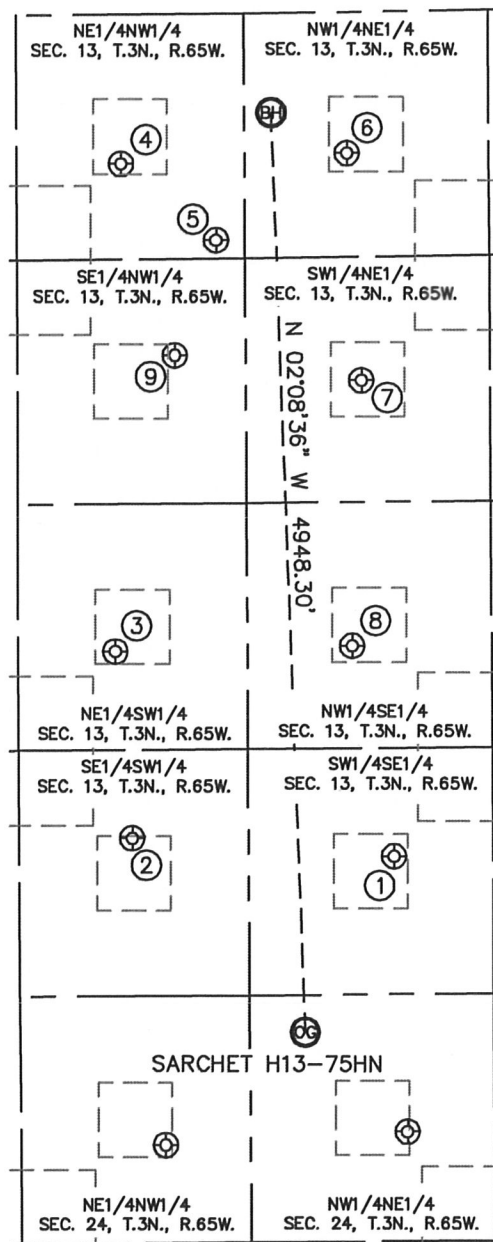
Lat40°, LLC

1635 Foxtrail Drive, Suite 325

Loveland, CO 80538

SITE SKETCH

SARCHET H13-75HN

SECTION: 24
TOWNSHIP: 3N
RANGE: 65W

①

UPRC 13-15J
SW1/4SE1/4
742' FSL
1858' FEL
LAT-40.21998°N
LONG-104.60931°W
PDOP: 1.3
ELEV: 4836

②

UPRC 13-14J
SE1/4SW1/4
849' FSL
1851' FWL
LAT-40.22028°N
LONG-104.61438°W
PDOP: 3.8
ELEV: 4847

③

UPRC 13-11J
NE1/4SW1/4
1856' FSL
1763' FWL
LAT-40.22304°N
LONG-104.61467°W
PDOP: 1.4
ELEV: 4868

④

UPRC 13-3J
NE1/4NW1/4
802' FNL
1797' FWL
LAT-40.23024°N
LONG-104.61447°W
PDOP: 2.7
ELEV: 4856

⑤

CHACON H13-18
NE1/4NW1/4
1217' FNL
2311' FWL
LAT-40.22910°N
LONG-104.61265°W
PDOP: 2.0
ELEV: 4856

⑥

MOORE UPRC H13-2
NW1/4NE1/4
759' FNL
2091' FEL
LAT-40.23037°N
LONG-104.61009°W
PDOP: 1.4
ELEV: 4852

⑦

SCHAFFER 32-13
SW1/4NE1/4
1980' FNL
2020' FEL
LAT-40.22702°N
LONG-104.60985°W
PDOP: 2.0
ELEV: 4844

⑧

UPRC 13-10J
NW1/4SE1/4
1877' FSL
2078' FEL
LAT-40.22310°N
LONG-104.61008°W
PDOP: 1.9
ELEV: 4845

⑨

UPRC 13-6J
SE1/4NW1/4
1834' FNL
2088' FWL
LAT-40.22741°N
LONG-104.61346°W
PDOP: 1.7
ELEV: 4855