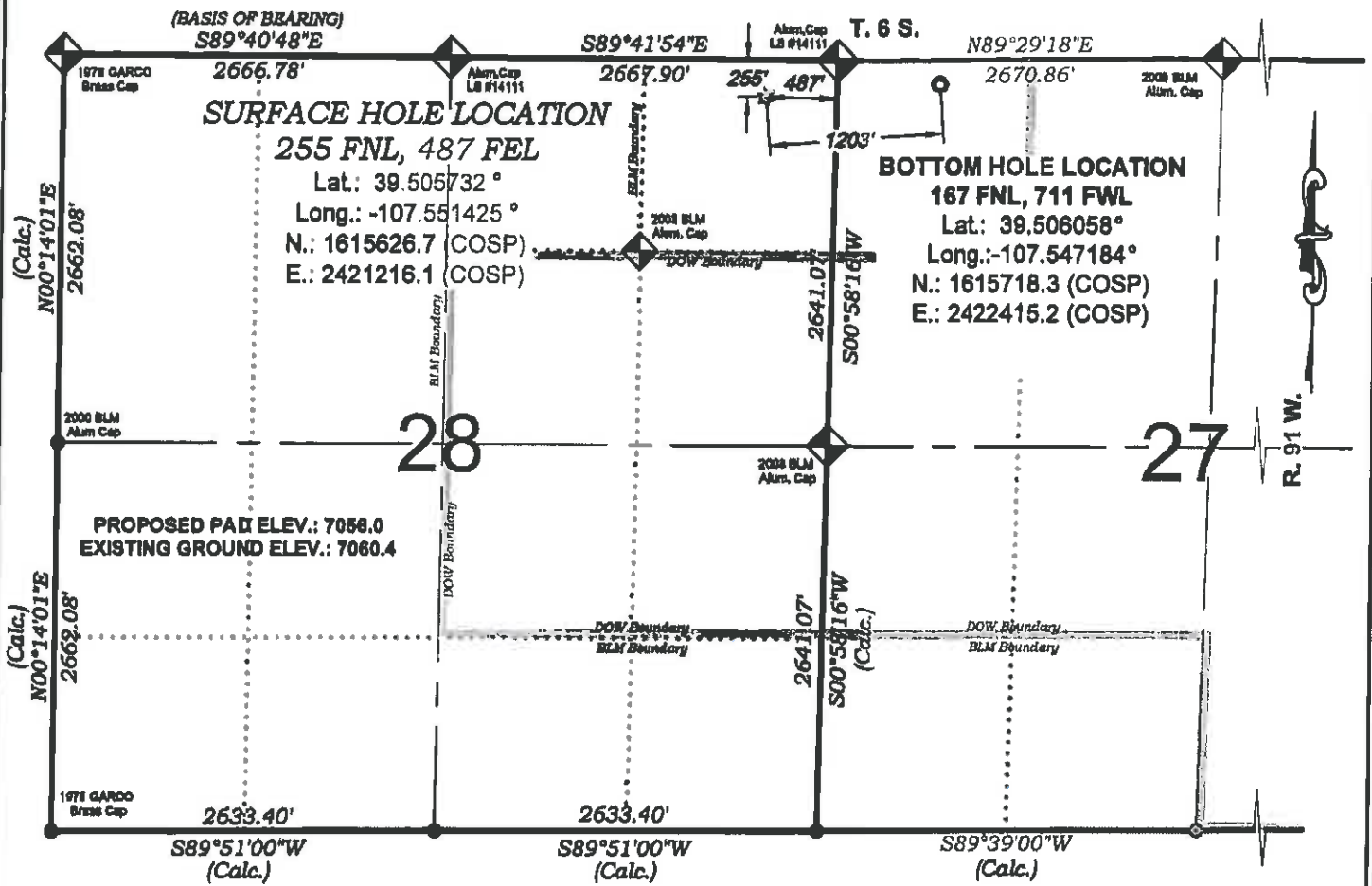


*Jolley KP 11-27*



**THERE ARE NO VISIBLE  
IMPROVEMENTS WITHIN 400'  
OF THIS LOCATION**



**SURVEYORS STATEMENT**

**I, MICHAEL J. LANGHORNE, A REGISTERED LAND SURVEYOR IN THE STATE OF COLORADO DO HEREBY CERTIFY THAT THE SURVEY SHOWN HEREON WAS PREPARED UNDER MY DIRECT SUPERVISION AND HAS BEEN STAKED ON THE GROUND AS SHOWN ON THE PLAT AND CHECKING THAT THIS MAP IS A TRUE REPRESENTATION THEREOF.**

**MICHAEL J. LANGHORNE, COLORADO REGISTRATION NO. 36572  
FOR AND ON BEHALF OF  
BOOKCLIFF SURVEY SERVICES, INC.**

## REFERENCES

- 1) 1887 SURVEY T. 6 S., R. 91 W., 6th P.M. (GLO PLAT)  
2) U.S.G.S. QUAD: NEW CASTLE, CO



**SURVEY DATE:** 2/23/11  
**MAP DATE:** 2/25/11  
**SCALE:** 1" = 1200'  
**PLAT:** 1 of 1  
**PROJECT:** Williams Kokopelli

**- LEGEND -**

**FIELD LOCATED SECTION  
MONUMENTS AS DESCRIBED**

FIELD SURVEYED  
WELL LOCATION

### CALCULATED BOTTOM HOLE LOCATION

### CALCULATED SECTION CORNER LOCATION

## NOTES

- 1) ELEVATIONS BASED ON N.A.V.D. 1988 PUBLISHED COORDINATES.
- 2) LATITUDES AND LONGITUDES ARE BASE ON NAD 83, PUBLISHED COORDINATES
- 3) STATE PLANE COORDINATES ARE BASED ON COLORADO CENTRAL ZONE, U.S. SURVEY FEET.
- 4) ELEVATION MASK SET TO 15'
- 5) GPS OPERATOR J. KIRKPATRICK, OBSERVED A PDOP OF 1.9 FOR SURVEY POINT NUMBER 77069.
- 6) SURFACE AND BOTTOM HOLE LOCATIONS ARE MEASURED 90° FROM SECTION LINES.

WELL LOCATION PLAT Prepared for:  
**Williams. Williams Production, RMT**

NE1/4 NE1/4, SECTION 28  
T. 6 S., R. 91 W. of the 6th. P.M.  
GARFIELD COUNTY, COLORADO