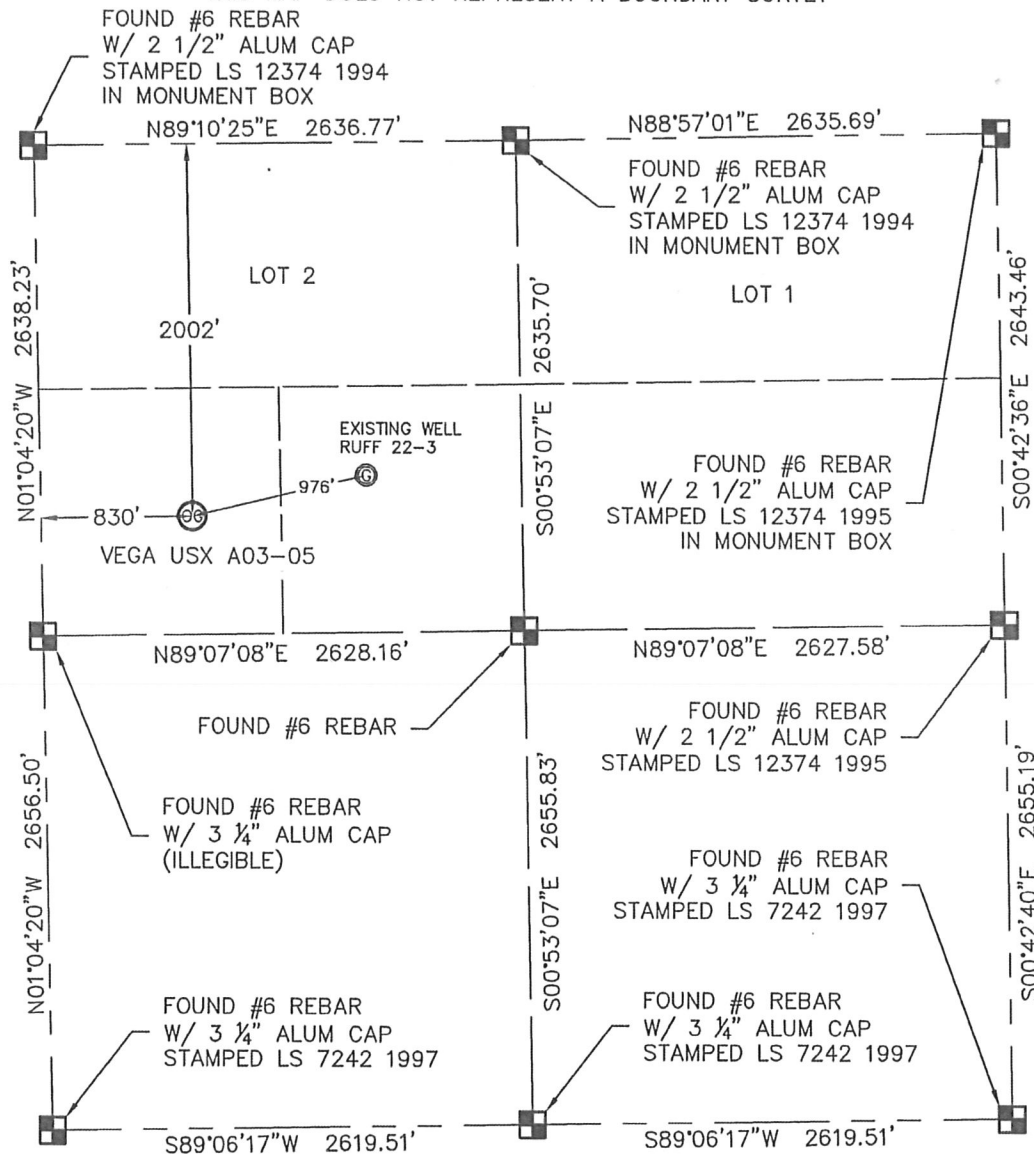


KING SURVEYORS, INC. 650 E. GARDEN DR. WINDSOR, CO 80550
WELL LOCATION CERTIFICATE
VEGA USX A03-05

SECTION: 3
 TOWNSHIP: 6N
 RANGE: 64W

THIS MAP DOES NOT REPRESENT A BOUNDARY SURVEY



In accordance with a request from CJ PIETRI with NOBLE ENERGY INC., King Surveyors Inc. has determined the surface location of the VEGA USX A03-05 to be 2002' from the NORTH line and 830' from the WEST line, as measured at right angles, from the section lines of Section 3, Township 6 North, Range 64 West of the Sixth Principal Meridian, County of Weld, State of Colorado.

I hereby state that this Well Location Certificate was prepared by me, or under my direct supervision, that the fieldwork was completed on 3-9-2011, for and on behalf of NOBLE ENERGY INC. That this is not a Land Survey Plat or an Improvement Survey Plat, and that it is not to be relied upon for establishment of fence, building, or other future Improvement lines.

NOTE:

- 1) Bearings shown are Grid Bearings of the Colorado State Plane Coordinate System, North Zone, North American Datum 1983/2007. The lineal dimensions as contained herein are based upon the "U.S. Survey Foot."
- 2) Ground elevations are based on an observed GPS elevation (NAVD 1988 DATUM).
- 3) NEAREST EXISTING WELL: RUFF 22-3 976' ENE
- 4) IMPROVEMENTS: See LOCATION DRAWING for all visible improvements within 400' of disturbed area.
- 5) SURFACE USE: CROP FIELD
- 6) FIELD OPERATOR: RON EDWARDS

SURFACE LOCATION
 LATITUDE: 40.516987N
 LONGITUDE: 104.54266°W
 PDOP: 2.0
 ELEV: 4826'
 1/4, 1/4: SW1/4 NW1/4
 NEAREST PROPERTY LINE: 485' E

NOTE

According to Colorado law, you must commence any legal action based upon any defect in this W.L.C. within three years after you discover such defect. In no event, may any action based upon any defect in this survey be commenced more than ten years after the date of the certificate shown hereon. (13-80-105 C.R.S.)

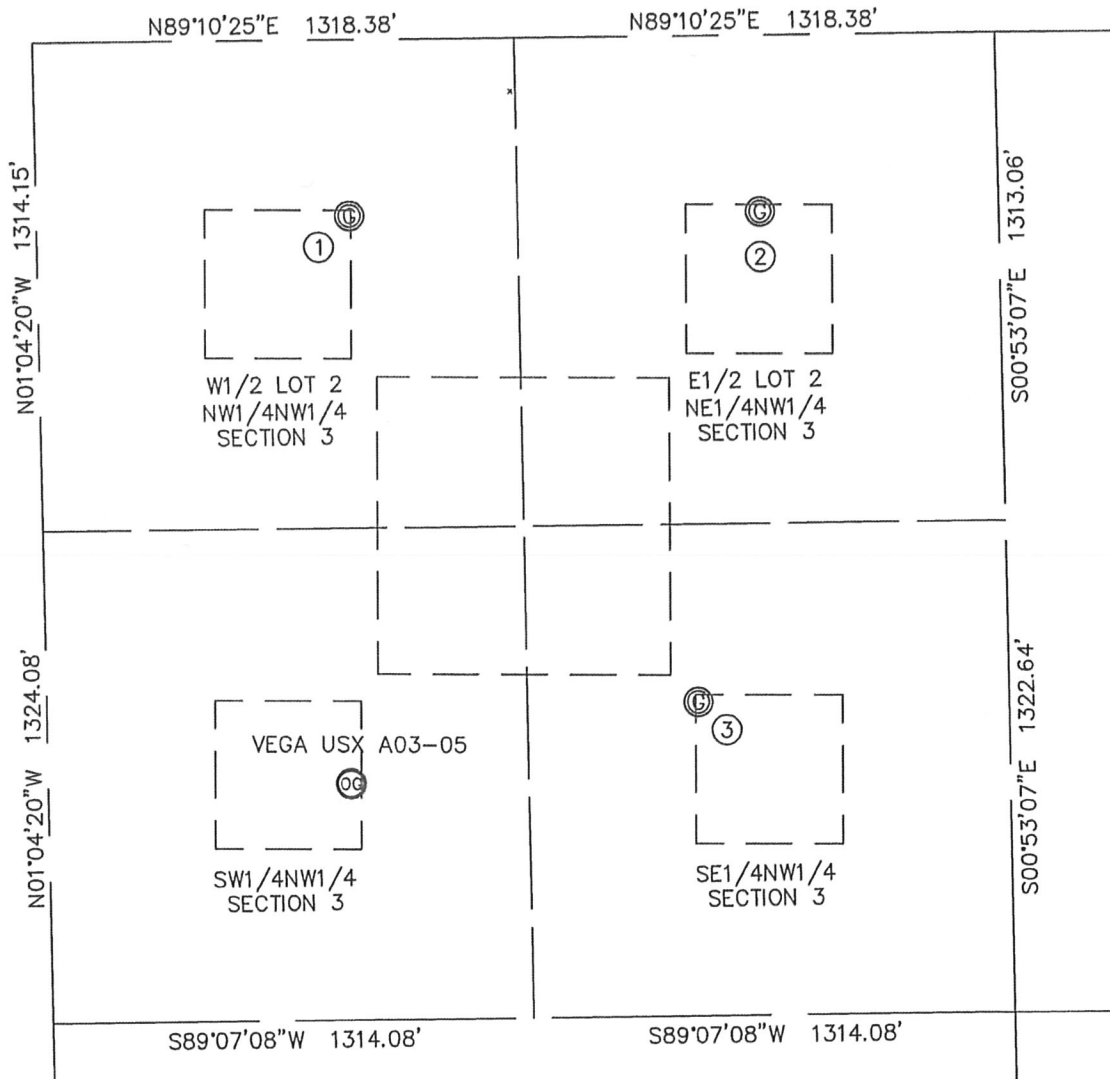
LEGEND

- = FOUND ALIQUOT MONUMENT AS DESCRIBED
- = CALCULATED POSITION
- = SET ALIQUOT MONUMENT AS DESCRIBED

Michael Chad Dilka - On Behalf Of King Surveyors, Inc.
 Colorado Licensed Professional Land Surveyor #38106
 3/28/2011
 PROJECT#: 2011088

KING SURVEYORS, INC. 650 E. GARDEN DR. WINDSOR, CO 80550
SITE SKETCH
 VEGA USX A03-05

SECTION: 3
 TOWNSHIP: 6N
 RANGE: 64W



①

VEGA 11-3
 W1/2 LOT 2
 NW1/4 NW1/4
 476' FNL
 858' FWL
 LAT-40.52117°N
 LONG-104.54260°W
 PDOP: 1.7
 ELEV: 4827'

②

RUFF 21-3
 E1/2 LOT 2
 NE1/4 NW1/4
 476' FNL
 1983' FWL
 LAT-40.52118°N
 LONG-104.53855°W
 PDOP: 2.0
 ELEV: 4812'

③

RUFF 22-3
 SE1/4 NW1/4
 1792' FNL
 1784' FWL
 LAT-40.51756°N
 LONG-104.53923°W
 PDOP: 1.7
 ELEV: 4818'

