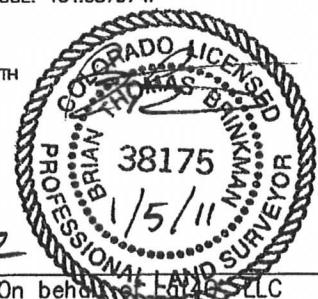


SECTION: 2  
TOWNSHIP: 4N  
RANGE: 65W

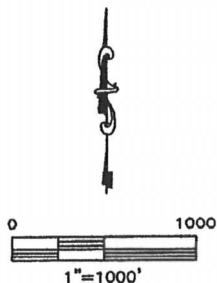
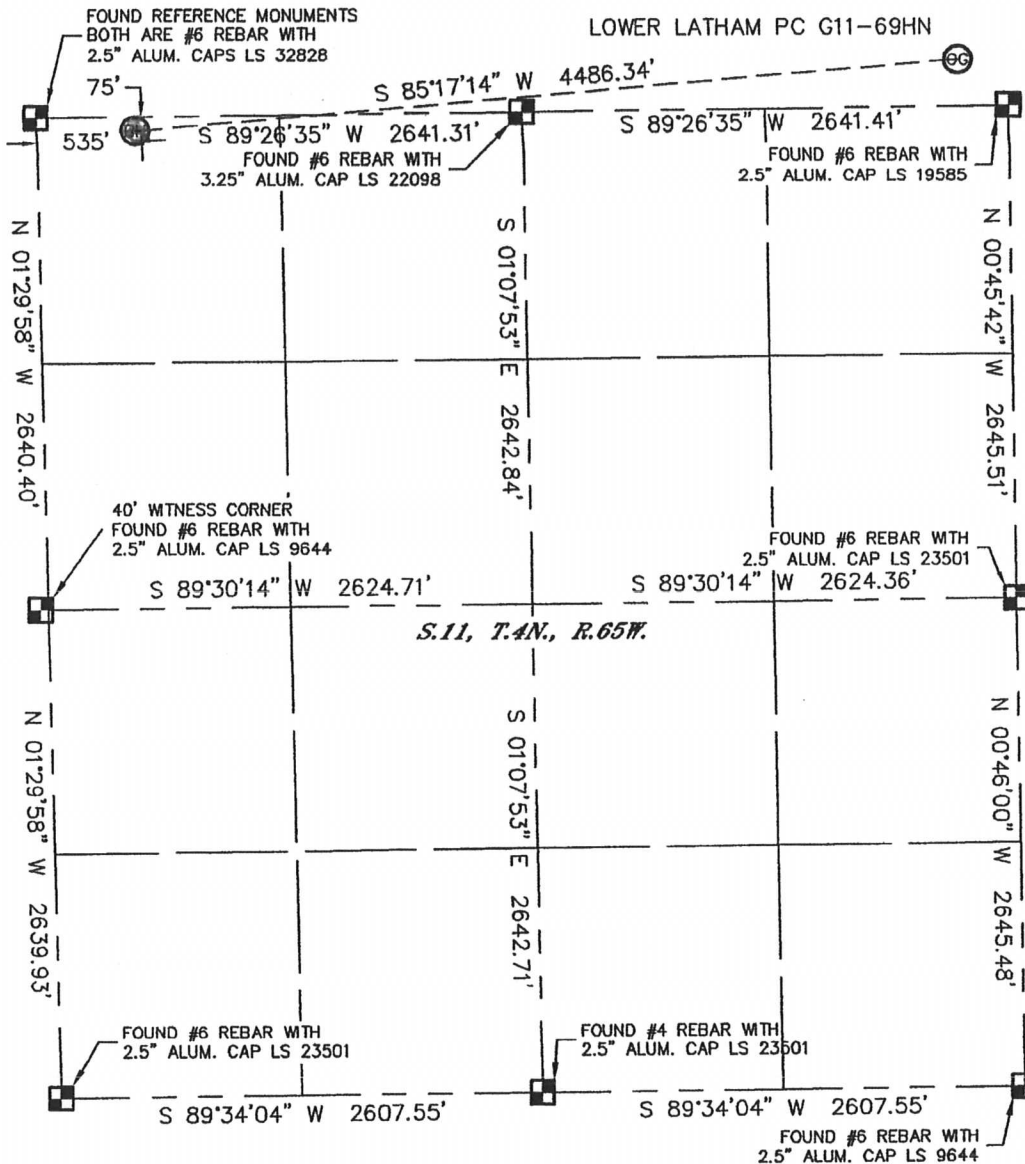
Brian T. Brinkman—On behalf of F&L LLC  
Colorado Licensed Professional  
Land Surveyor No. 38175 PROJECT#: 20101



# WELL LOCATION CERTIFICATE



THIS MAP DOES NOT REPRESENT A BOUNDARY SURVEY

SECTION: 2  
TOWNSHIP: 4N  
RANGE: 65W



**NOTE**  
According to Colorado law, you must commence any legal action based upon any defect in this W.L.C. within three years after you discover such defect. In no event, may any action based upon any defect in this survey be commenced more than ten years after the date of the certificate shown hereon. (13-80-105 C.R.S.)

## LEGEND

-  = ALIQUOT MONUMENT AS DESCRIBED
-  = CALCULATED POSITION



*SHEET 2 of 2*

Brian T. Brinkman—On behalf of Lat40°, LLC  
Colorado Licensed Professional  
Land Surveyor No. 38175

PROJECT#: 2010169

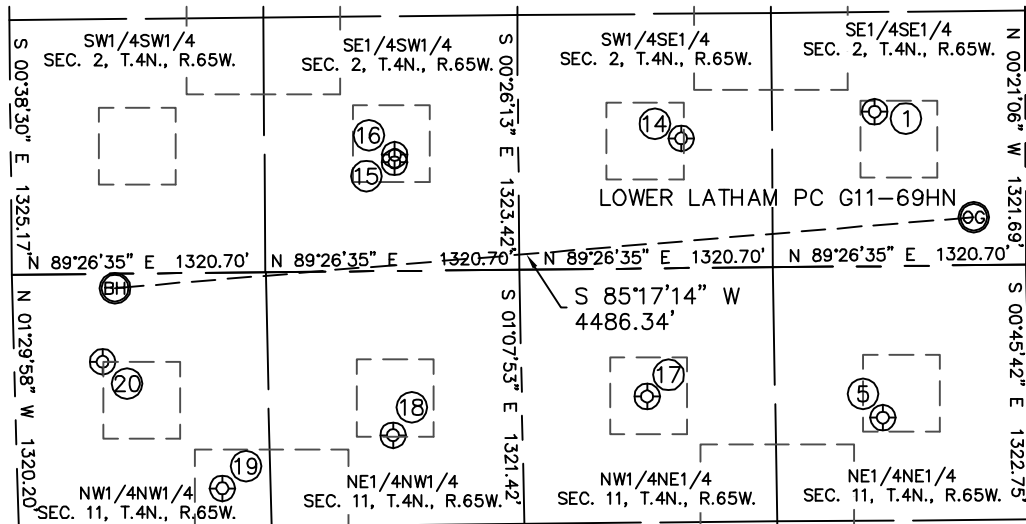
Lat40°, LLC

1635 Foxtrail Drive, Suite 325

Loveland, CO 80538

**SITE SKETCH**

LOWER LATHAM PC G11-69HN

SECTION: 2  
TOWNSHIP: 4N  
RANGE: 65W

①

LATHAM 2-44  
SE1/4SE1/4  
804' FSL  
786' FEL  
LAT-40.33646°N  
LONG-104.62376°W  
PDOP: 2.3  
ELEV: 4701

⑤

HANSCOME 11-7  
NE1/4NE1/4  
787' FNL  
758' FEL  
LAT-40.33209°N  
LONG-104.62366°W  
PDOP: 1.5  
ELEV: 4708

⑭

LATHAM 2-43  
SW1/4SE1/4  
674' FSL  
1793' FEL  
LAT-40.33610°N  
LONG-104.62737°W  
PDOP: 2.2  
ELEV: 4680

⑮

LATHAM RESERVOIR 1  
SE1/4SW1/4  
564' FSL  
1998' FWL  
LAT-40.33580°N  
LONG-104.63273°W  
PDOP: 2.1  
ELEV: 4673

⑯

LATHAM 2-31  
SE1/4SW1/4  
604' FSL  
2000' FWL  
LAT-40.33591°N  
LONG-104.63273°W  
PDOP: 2.1  
ELEV: 4673

⑰

HANSCOME 5  
NW1/4NE1/4  
665' FNL  
1984' FEL  
LAT-40.33242°N  
LONG-104.62806°W  
PDOP: 1.3  
ELEV: 4684

⑱

HANSCOME 3  
NE1/4NW1/4  
854' FNL  
1962' FWL  
LAT-40.33191°N  
LONG-104.63281°W  
PDOP: 1.3  
ELEV: 4675

⑲

HANSCOME 11-415  
NW1/4NW1/4  
1121' FNL  
1066' FWL  
LAT-40.33117°N  
LONG-104.63600°W  
PDOP: 1.3  
ELEV: 4676

⑳

HANSCOME G11-4  
NW1/4NW1/4  
458' FNL  
460' FWL  
LAT-40.33299°N  
LONG-104.63822°W  
PDOP: 1.8  
ELEV: 4674

