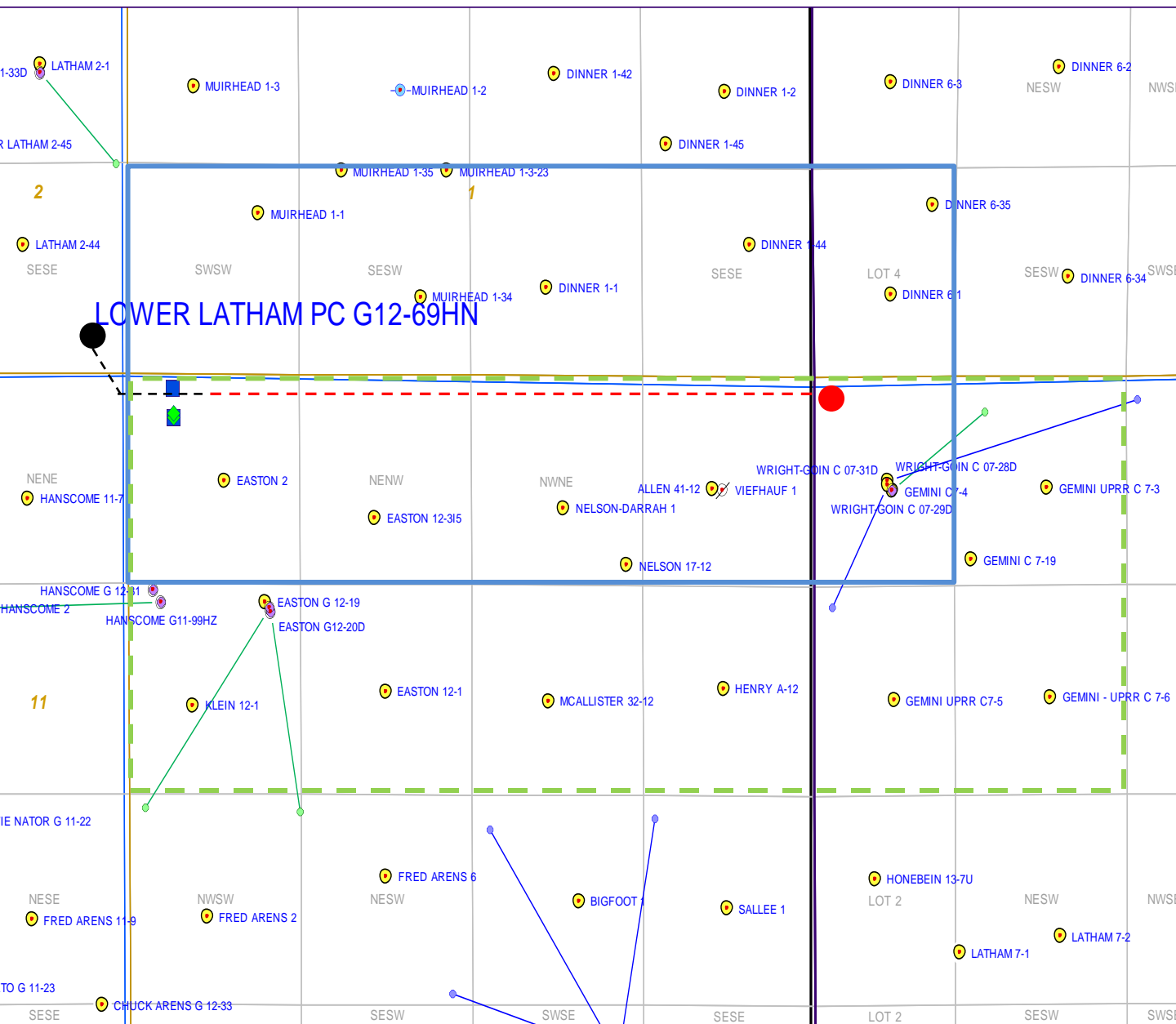


LOWER LATHAM PC G12-69HN
Proposed Spacing Unit – Noble Energy, Inc
S/2S/2 Section 1; N/2N/2 Section 12, Township 4 North, Range 65 West
SW/4SW/4 Section 6; NW/4NW/4 Section 7, Township 4 North, Range 64 West



Legend



Proposed 400 acre spacing unit



Bottom Hole Location

Bottom Hole Located N/2 Section 12, Township 4 North, Range 65 West; NW/4 Section 7, Township 4 North, Range 64 West

**The governmental ¼ Section has less than 8 bottom hole wells producing from the
 Codell, Niobrara, and J-Sand formations.**