

OPERATOR: WIEPKING - FULLERTON ENERGY LLC  
WELL NAME: ALOHA MULA 11

TEST NO: 2  
TICKET NO: 2831

Contractor Murfin Drilling  
Rig No. 25  
Spot NE/NE  
Sec 19  
Twp 10 S  
Rng 55 W  
Field Great Plains  
County Lincoln  
State Colorado  
Elevation 5207' KB - 5194' GL  
Formation Cherokee "A"

Surface Choke 1"  
Bottom Choke 5/8"  
Hole Size 7 7/8"  
Core Hole Size  
DP Size & Wt 4 1/2" 16.60  
Wt Pipe  
ID of DC 2 1/4"  
Length of DC 542'  
Total Depth 7120'  
Type of Test Open Hole Dst  
Interval 7075'- 7120'

Mud Type Chemical/Gel  
Weight 9.2  
Viscosity 65  
Water Loss 8.8  
Filter Cake  
RW 4.0 @ 60 Deg F  
Chlorides 1,561 Ppm  
Co. Rep. Greg Smith  
Tester Mark Green

### Pipe Recovery:

753' Total fluid = 5.65 bbl., consisting of:  
31' Mud w/trace of oil = 0.44 bbl.  
722' Oil cut, gassy muddy water = 5.21 bbl.

### Properties:

### Surface blow:

Pre-Flow: Began with a 1/2" blow, increased to 2" at 2 minutes, bottom of bucket at 10 1/2 minutes, 9.0 oz at 15 minutes and 8.0 oz at 22 minutes.  
Final Flow: Began with a weak surface blow, increased to 10" at 10 minutes, bottom of bucket at 11 minutes; 9.0 oz at 15 minutes, 5.0 oz at 30 minutes and 4.0 oz at 42 minutes.

### Remarks:

The pressure data indicates slight plugging or fluid slugging during the first 11 minutes of the pre-flow period.

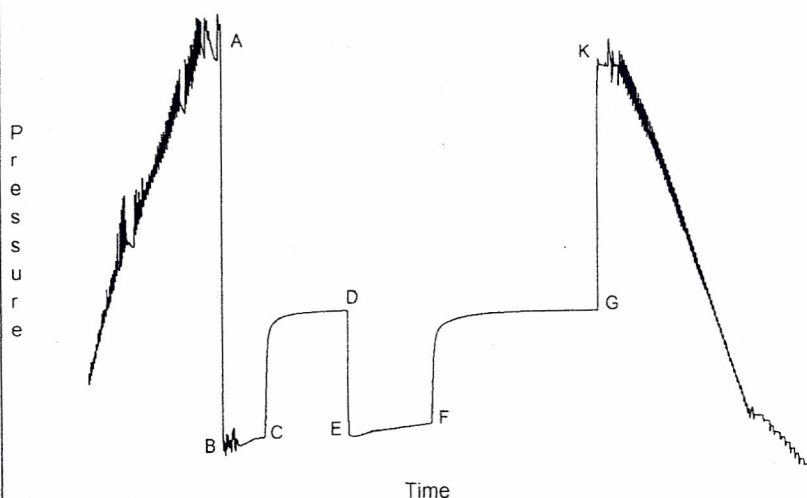
### Downhole Sampler:

Pressure in Sampler 490 psig  
Volume of Sampler 2050 cc  
Volume of Sample 1650 cc  
Oil: 100 cc  
Water: 1500 cc  
Mud: Gassy mud 50 cc  
Gas: 2.98 cu ft  
Other: 0  
Rw: 0.15 @ 60 deg F/0.05 @ res temp  
Chlorides: 54,057 ppm NaCl, 32,862 ppm Cl.  
Gas/Oil Ratio  
Gravity API @ 60 Deg F

Opened Tool @ 10:50 hrs on 01/19/2011

	Reported	Corrected	
Flow 1	30	30	min
Shut-in 1	60	60	min
Flow 2	60	60	min
Shut-in 2	120	120	min

Downhole Pressure Chart



Downhole Pressure Data

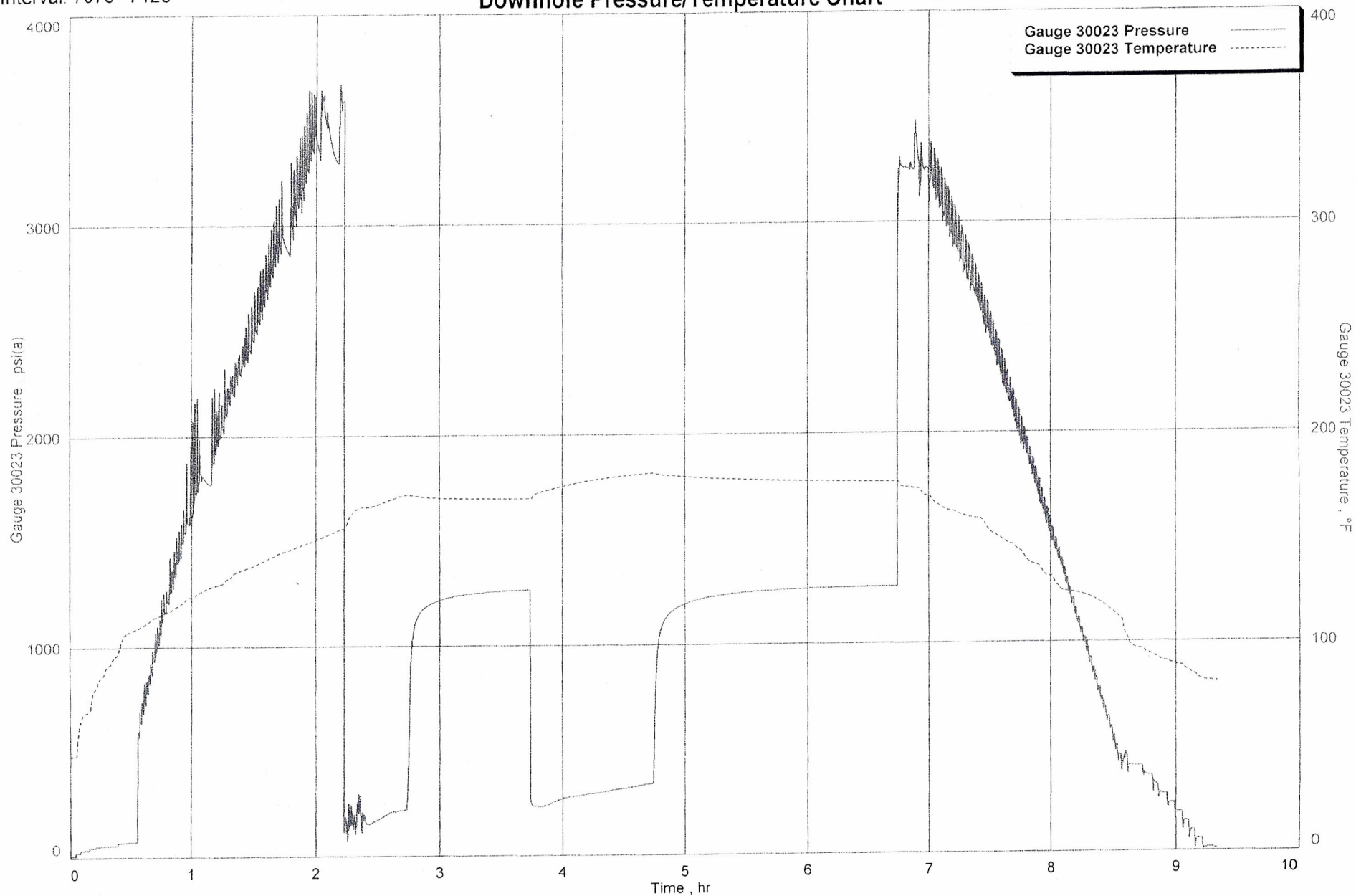
Recorder Type JMCO Memory Recorder  
No. 30023 Cap 10000 psi  
Depth 7050 ft  
Inside X Outside  
Psi(a) Deg (f)  
Initial Hydrostatic [A] 3297  
Final Hydrostatic [K] 3253  
Initial Flow 1 [B] 109 157  
Final Flow 1 [C] 224 172  
Initial Flow 2 [E] 240 171  
Final Flow 2 [F] 345 182  
Shut-in 1 [D] 1264 170  
Shut-in 2 [G] 1269 177  
Maximum Temperature 182



Wiepking - Fullerton Energy LLC  
Interval: 7075'- 7120'

Aloha Mula 11, Dst 2  
Formation: Cherokee "A"

### Downhole Pressure/Temperature Chart

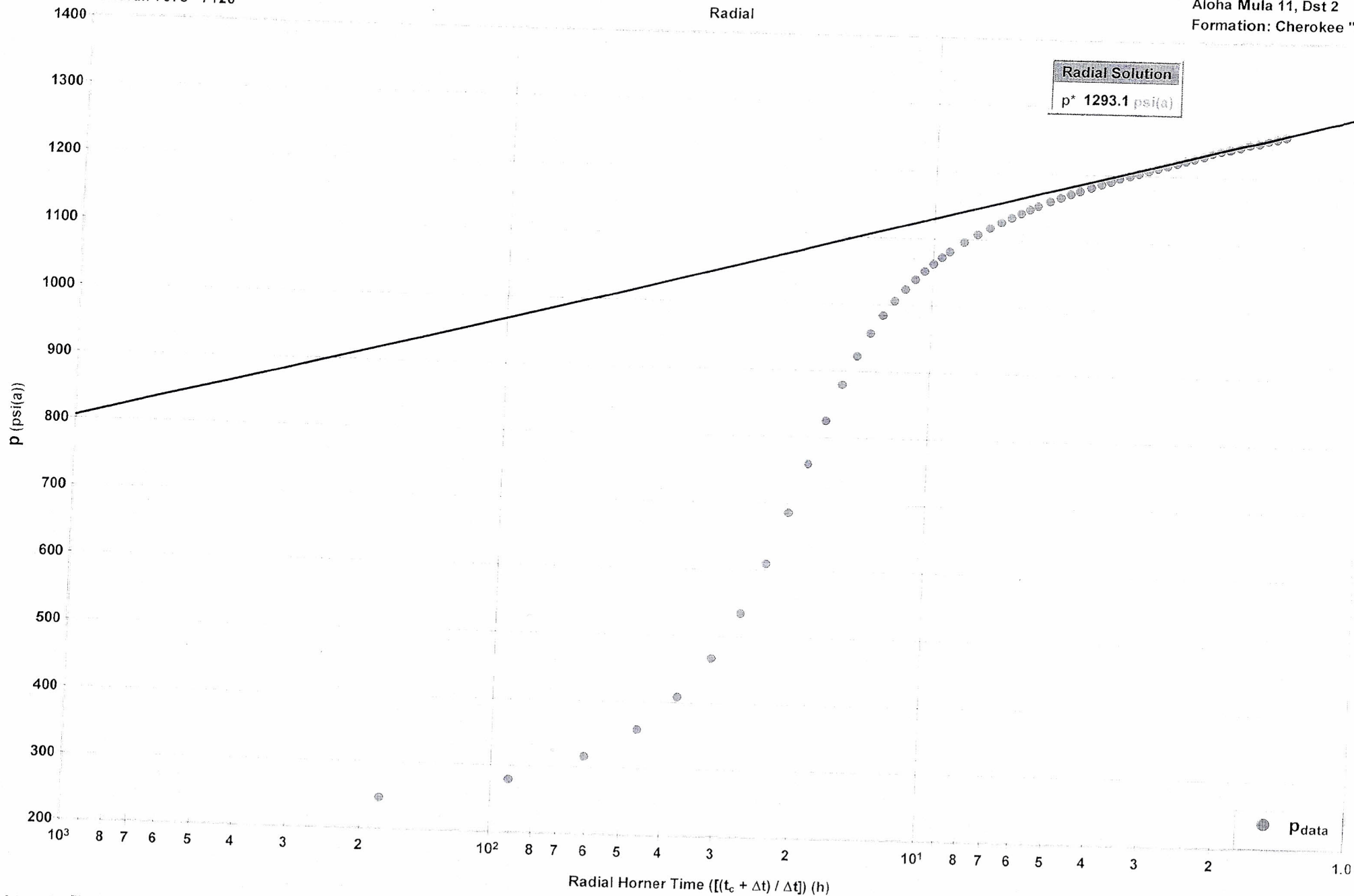


Wiepking - Fullerton Energy LLC  
Interval: 7075' - 7120'

# Diagnostic Plot - Shut In 1

Radial

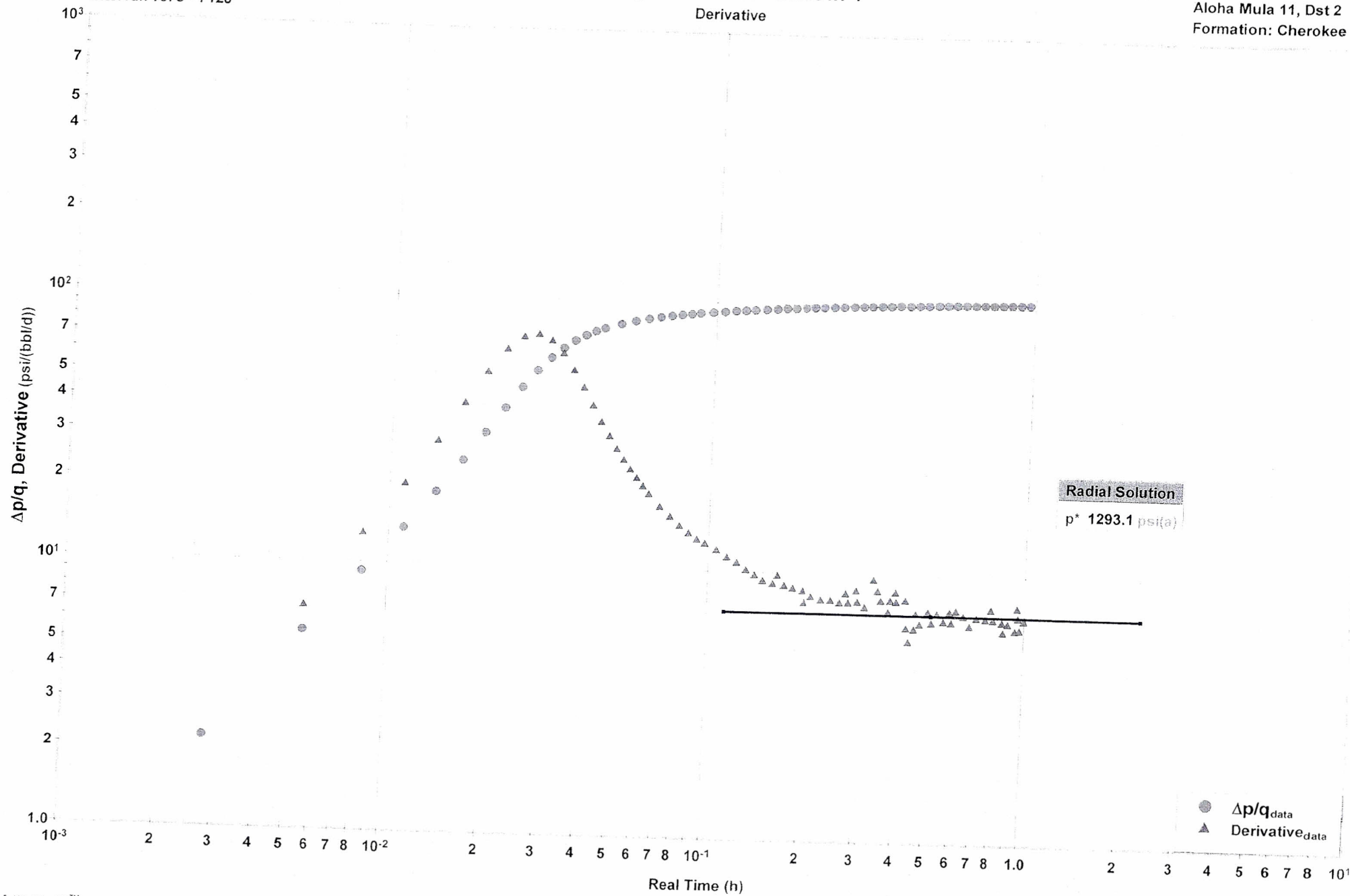
Aloha Mula 11, Dst 2  
Formation: Cherokee "



Wiepking - Fullerton Energy LLC  
Interval: 7075' - 7120'

# Diagnostic Plot - Shut In 1

Aloha Mula 11, Dst 2  
Formation: Cherokee "

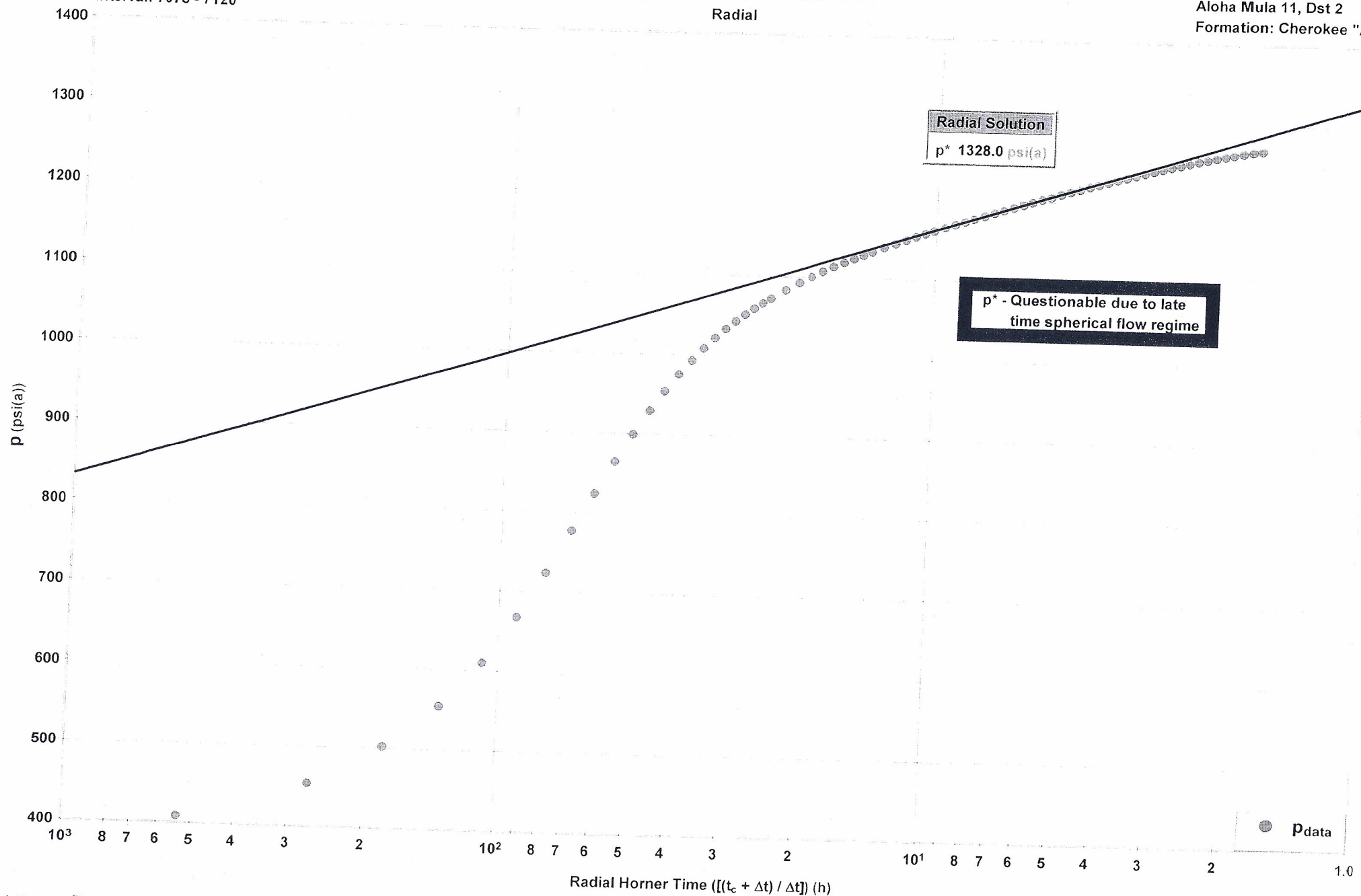


Wiepking - Fullerton Energy LLC  
Interval: 7075' - 7120'

## Diagnostic Plot - Shut In 2

Aloha Mula 11, Dst 2  
Formation: Cherokee "

Radial



Wiepking - Fullerton Energy LLC  
Interval: 7075' - 7120'

## Diagnostic Plot - Shut In 2

Aloha Mula 11, Dst 2  
Formation: Cherokee "A"

