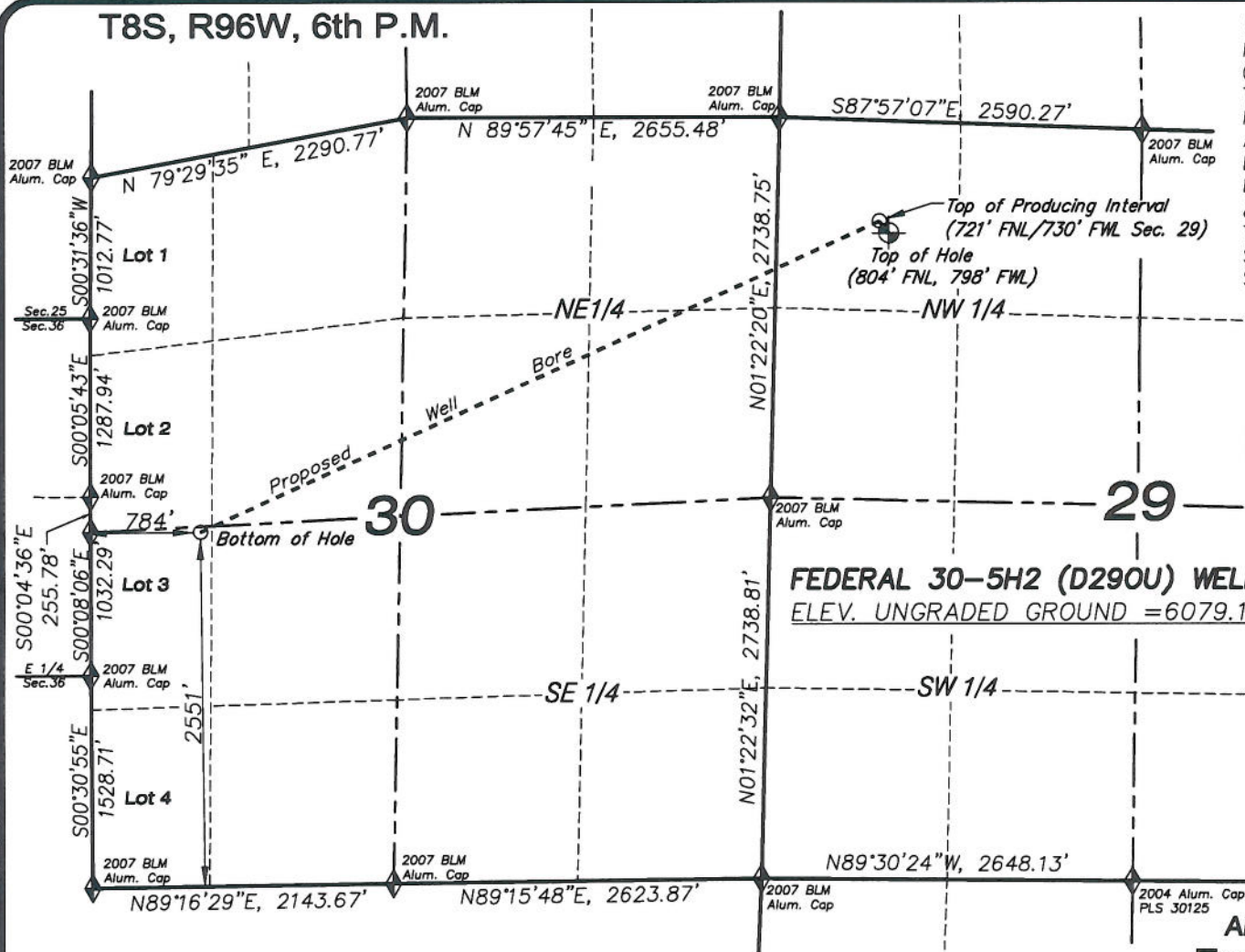
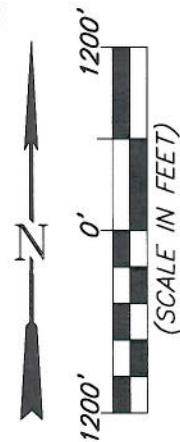
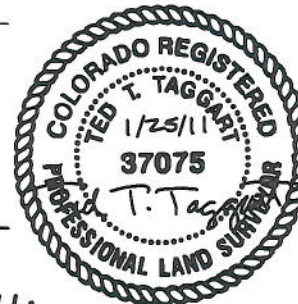


T8S, R96W, 6th P.M.



CERTIFICATE OF SURVEYOR
I, TED TAGGART OF FRUITA,
COLORADO HEREBY CERTIFY
THAT THIS MAP WAS MADE
FROM NOTES TAKEN DURING
AN ACTUAL SURVEY MADE
BY ME OR UNDER MY
DIRECTION FOR ENCANA OIL
& GAS (USA) INC. AND THAT
THIS LOCATION HAS BEEN
STAKED ON THE GROUND AS
SHOWN HEREON.



FEDERAL 30-5H2 (D29OU) WELL:
ELEV. UNGRADED GROUND = 6079.1'

FEDERAL 30-5H2 (D29OU) WELL
(WELLHEAD LOCATION) NAD 83
LATITUDE = 39.325953° N
LONGITUDE = 108.138452° W
(BOTTOM HOLE LOCATION) NAD 83
LATITUDE = 39.320005° N
LONGITUDE = 108.155763° W

MAP to ACCOMPANY
APPLICATION for PERMIT to DRILL
EnCana Oil & Gas (USA) Inc.
Federal 30-5H2 (D29OU) Well

NW1/4 NW1/4, SECTION 29
T8S, R96W, 6th P.M.
MESA COUNTY, COLORADO

Location Plat		Scale: 1" = 1200'	SHEET 1d OF 10
Project No.	10-04-28	Date Surveyed: 5/10/10	
Date Drawn:	1/25/11	Latest Revision Date:	

LEGEND

- ◆ SECTION CORNER LOCATED
- ⊕ SURFACE LOCATION
- BOTTOM HOLE LOCATION
- RECORD LOCATION OF CORNER

NOTES

1. WELL FOOTAGES ARE MEASURED AT RIGHT ANGLES TO SECTION LINES.
2. BASIS OF BEARING: GEODETIC- BASED ON GPS OBSERVATIONS.
3. ELEVATIONS BASED ON GPS OBSERVATIONS, NAVD 88 (GEOID 03), POST PROCESSED USING NGS OPUS.
4. SEE ADDENDUM TO LEGAL PLAT (SHEET 1a) FOR VISIBLE IMPROVEMENTS WITHIN 400 FEET OF THE PROPOSED OIL & GAS LOCATION.
5. CONTROL FOR SURVEY WAS ESTABLISHED USING DIFFERENTIALLY CORRECTED GPS FROM AN OPUS BASED CONTROL NETWORK. WELL LOCATION WAS ESTABLISHED USING NON-GPS CONVENTIONAL METHODS, THEREFORE NO PDOP READING WAS TAKEN.



906 Main Street
Evanston, Wyoming 82930
Phone No. (307) 789-4545