

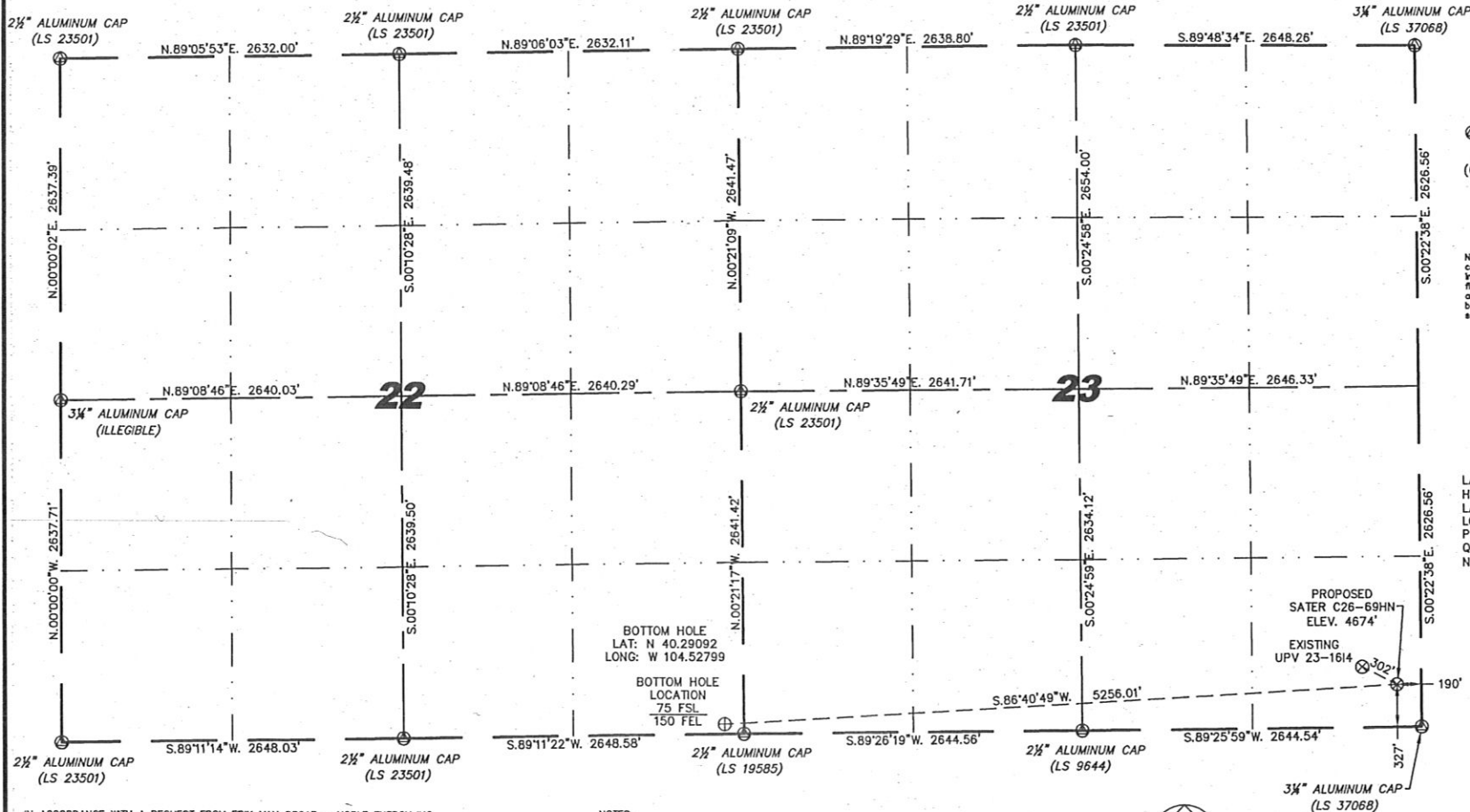
Steil Surveying Services, LLC

1102 West 19th Street P.O. BOX 2073

Cheyenne, Wyoming 82009

**WELL LOCATION CERTIFICATE**  
THIS MAP DOES NOT REPRESENT A BOUNDARY SURVEY

SECTION 22 & 23  
TOWNSHIP 4 NORTH  
RANGE 64 WEST



- LEGEND**
- ⊙ FOUND SURVEY MONUMENT PER MONUMENT RECORD - EXCEPTIONS NOTED.
  - (C) CALCULATED DIMENSION

NOTICE: According to Colorado law you MUST commence any legal action based upon any defect in this W.L.C. within three years after you first discover such defect. In no event may any action based upon any defect in this W.L.C. be commenced more than ten years from this sold date of the certification shown hereon.

LATITUDE & LONGITUDE (NAD 83 SURFACE HOLE):  
LATITUDE: N 40.29160°  
LONGITUDE: W 104.50917°  
PDOP: 2.2  
QUARTER-QUARTER: SE/4SE/4 SEC 23  
NEAREST PROPERTY LINE: 190' EAST

BOTTOM HOLE  
LAT: N 40.29092  
LONG: W 104.52799

BOTTOM HOLE  
LOCATION  
75 FSL  
150 FSL

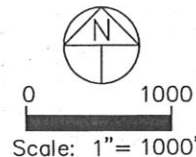
PROPOSED  
SATER C26-69HN  
ELEV. 4674'  
EXISTING  
UPV 23-1614



IN ACCORDANCE WITH A REQUEST FROM ERIK VAN DECAR - NOBLE ENERGY INC., STEIL SURVEYING SERVICES, LLC HAS DETERMINED THE LOCATION OF THE SATER C26-69HN WELL TO BE 327' FSL, 190' FEL, AS MEASURED AT NINETY (90) DEGREES FROM THE SECTION LINES, SECTION 22 & 23, TOWNSHIP 4 NORTH, RANGE 64 WEST, 6TH PRINCIPLE MERIDIAN, WELD COUNTY, COLORADO.

I HEREBY CERTIFY THAT THIS WELL LOCATION CERTIFICATE WAS PREPARED BY ME, OR UNDER MY DIRECT SUPERVISION, THAT THE FIELD WORK WAS COMPLETED ON 11/08/2010, FOR AND ON BEHALF OF NOBLE ENERGY INC., THAT IT IS NOT A LAND SURVEY PLAT OR AN IMPROVEMENT SURVEY PLAT, AND THAT IT IS NOT TO BE RELIED UPON FOR ESTABLISHMENT OF FENCE, BUILDING, OR OTHER FUTURE IMPROVEMENT LINES.

- NOTES:
- 1) BASIS OF BEARINGS FOR THIS MAP ARE BASED UPON GPS OBSERVATIONS MADE ON 11/08/2010 BETWEEN MONUMENTS LOCATED AT THE SOUTHEAST SECTION CORNER AND THE NORTHEAST SECTION CORNER OF SAID SECTION AND WITH ALL BEARINGS SHOWN HEREON RELATIVE THERETO.
  - 2) COORDINATES SHOWN ARE COLORADO STATE PLANE (NORTH ZONE) NAD 83.
  - 3) ELEVATIONS ARE BASED UPON NGS OPUS SOLUTION NAVD 88 DATUM.
  - 4) THE NEAREST EXISTING WELL IS: UPV 23-1614, 302' NORTHWEST.
  - 5) SEE LOCATION DRAWING FOR IMPROVEMENTS WITHIN VISIBLE IMPROVEMENTS LIMIT.
  - 6) THE LOCATION FALLS IN CROP LAND.



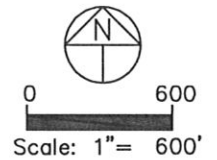
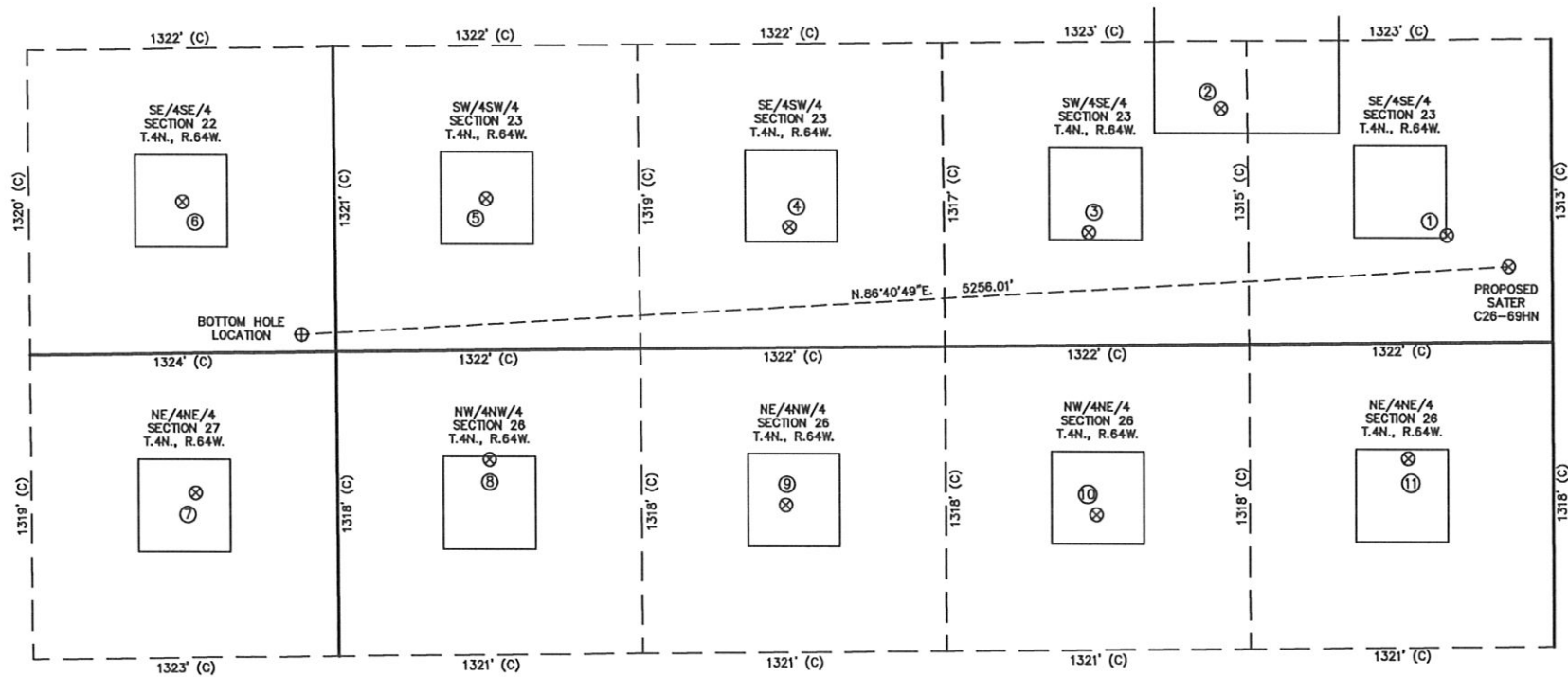
David C. Holmes  
Professional Land Surveyor Registration No. 32828  
State of Colorado

JOB #:10086

Completed 11/23/2010

# SITE SKETCH – SATER C26-69HN

SECTIONS 22 & 23  
TOWNSHIP 4 NORTH  
RANGE 64 WEST



①	②	③	④	⑤	⑥	⑦	⑧	⑨	⑩	⑪
UPV 23-1614 SE/SE SEC. 23 466' FSL 459' FEL EL 4670' N 40.29198 W 104.51013 PDOP 2.1	UPV 23-1514 SW/SE SEC. 23 1023' FSL 1436' FEL EL 4664' N 40.29351 W 104.51362 PDOP 2.0	SATER C23-15 SW/SE SEC. 23 490' FSL 2015' FEL EL 4665' N 40.29205 W 104.51571 PDOP 2.0	KISSLER JX SE/SW SEC. 23 524' FSL 1974' FWL EL 4666' N 40.29215 W 104.52038 PDOP 1.9	KISSLER 1 SW/SW SEC. 23 657' FSL 658' FWL EL 4664' N 40.29252 W 104.52508 PDOP 2.1	HERBST 22-16 SE/SE SEC. 22 656' FSL 658' FWL EL 4666' N 40.29251 W 104.52980 PDOP 1.9	BORN SITZMAN NO. 1 NE/NE SEC. 27 606' FNL 612' FEL EL 4671' N 40.28905 W 104.52966 PDOP 2.2	DINNEL 26-4 NW/NW SEC. 26 472' FNL 662' FWL EL 4669' N 40.28942 W 104.52509 PDOP 2.3	DINNEL NO. 2 NE/NW SEC. 26 680' FNL 1948' FWL EL 4670' N 40.28885 W 104.52048 PDOP 1.9	RASSMUSSEN NO. 1 NW/NE SEC. 26 733' FNL 1988' FEL EL 4681' N 40.28869 W 104.51564 PDOP 1.9	PROSPECT CO 26-114 NE/NE SEC. 26 500' FNL 634' FEL EL 4670' N 40.28933 W 104.51078 PDOP 2.5

## NOTES:

- THIS SKETCH DOES NOT REPRESENT A BOUNDARY SURVEY.
- THE DATUM FOR THE LATITUDES AND LONGITUDES ON THIS SKETCH IS NAD83.