

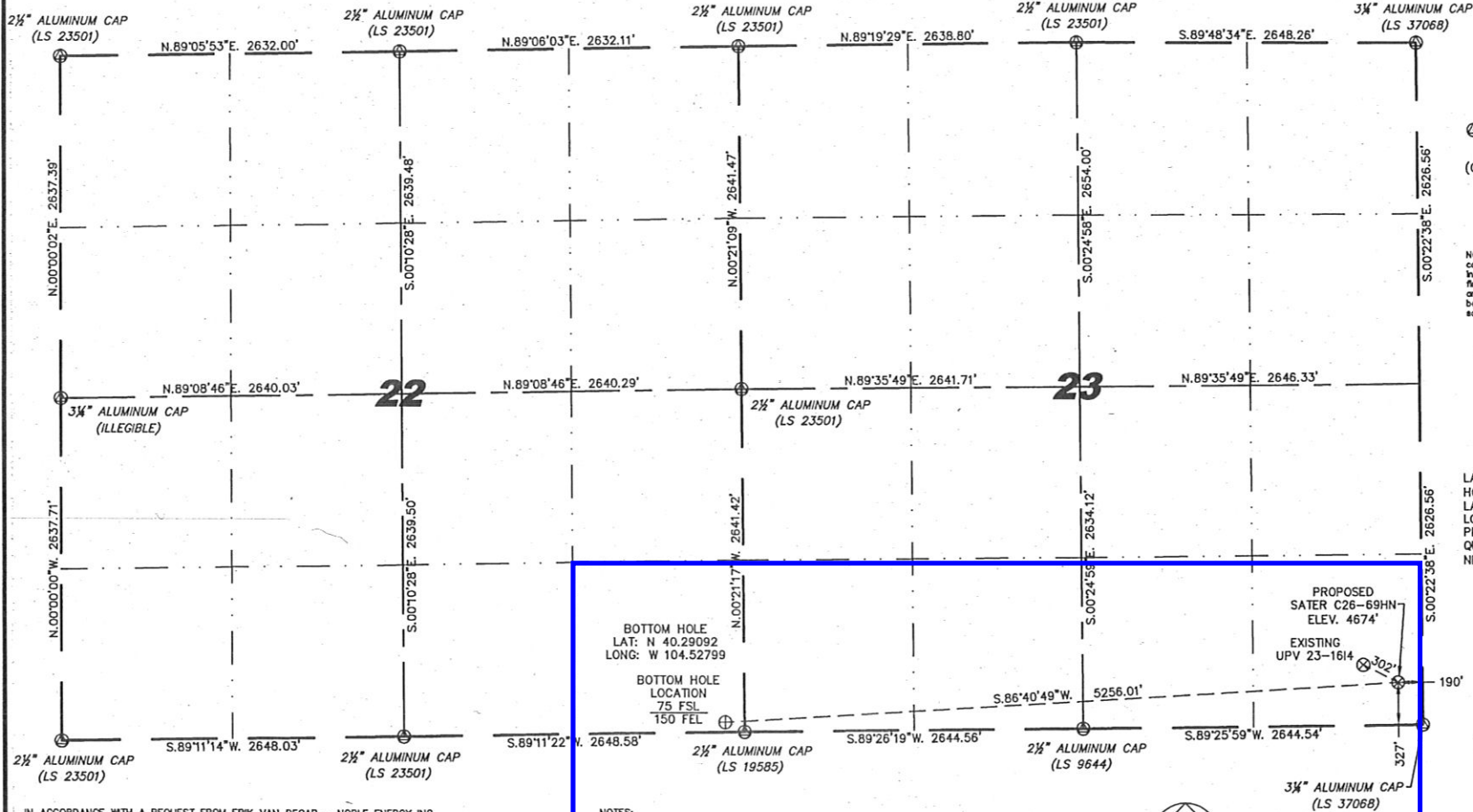
Steil Surveying Services, LLC

1102 West 19th Street P.O. BOX 2073

Cheyenne, Wyoming 82009

WELL LOCATION CERTIFICATE
THIS MAP DOES NOT REPRESENT A BOUNDARY SURVEY

SECTION 22 & 23
TOWNSHIP 4 NORTH
RANGE 64 WEST



LEGEND
 (A) FOUND SURVEY MONUMENT PER MONUMENT RECORD - EXCEPTIONS NOTED.
 (C) CALCULATED DIMENSION

NOTICE: According to Colorado law you MUST commence any legal action based upon any defect in this W.L.C. within three years after you first discover such defect. In no event may any action based upon any defect in this W.L.C. be commenced more than ten years from this sold date of the certification shown hereon.

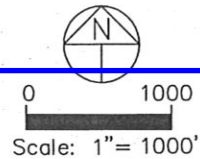
LATITUDE & LONGITUDE (NAD 83 SURFACE HOLE):
 LATITUDE: N 40.29160°
 LONGITUDE: W 104.50917°
 PDOP: 2.2
 QUARTER-QUARTER: SE/4SE/4 SEC 23
 NEAREST PROPERTY LINE: 190' EAST



IN ACCORDANCE WITH A REQUEST FROM ERIK VAN DECAR - NOBLE ENERGY INC. STEIL SURVEYING SERVICES, LLC HAS DETERMINED THE LOCATION OF THE SATER C26-69HN WELL TO BE 327' FSL, 190' FEL, AS MEASURED AT NINETY (90) DEGREES FROM THE SECTION LINES, SECTION 22 & 23, TOWNSHIP 4 NORTH, RANGE 64 WEST, 6TH PRINCIPLE MERIDIAN, WELD COUNTY, COLORADO.

I HEREBY CERTIFY THAT THIS WELL LOCATION CERTIFICATE WAS PREPARED BY ME, OR UNDER MY DIRECT SUPERVISION, THAT THE FIELD WORK WAS COMPLETED ON 11/08/2010, FOR AND ON BEHALF OF NOBLE ENERGY INC. THAT IT IS NOT A LAND SURVEY PLAT OR AN IMPROVEMENT SURVEY PLAT, AND THAT IT IS NOT TO BE RELIED UPON FOR ESTABLISHMENT OF FENCE, BUILDING, OR OTHER FUTURE IMPROVEMENT LINES.

- NOTES:
- 1) BASIS OF BEARINGS FOR THIS MAP ARE BASED UPON GPS OBSERVATIONS MADE ON 11/08/2010 BETWEEN MONUMENTS LOCATED AT THE SOUTHEAST SECTION CORNER AND THE NORTHEAST SECTION CORNER OF SAID SECTION AND WITH ALL BEARINGS GIVEN HEREON RELATIVE THERE TO.
 - 2) COORDINATES SHOWN ARE COLORADO STATE PLANE (NORTH ZONE) NAD 83.
 - 3) ELEVATIONS ARE BASED UPON NGS OPUS SOLUTION NAVD 88 DATUM.
 - 4) THE NEAREST EXISTING WELL IS: UPV 23-1614, 302' NORTHWEST.
 - 5) SEE LOCATION DRAWING FOR IMPROVEMENTS WITHIN VISIBLE IMPROVEMENTS LIMIT.
 - 6) THE LOCATION FALLS IN CROP LAND.



David C. Holmes
 Professional Land Surveyor Registration No. 32828
 State of Colorado
 JOB #:10086
 Completed 11/23/2010