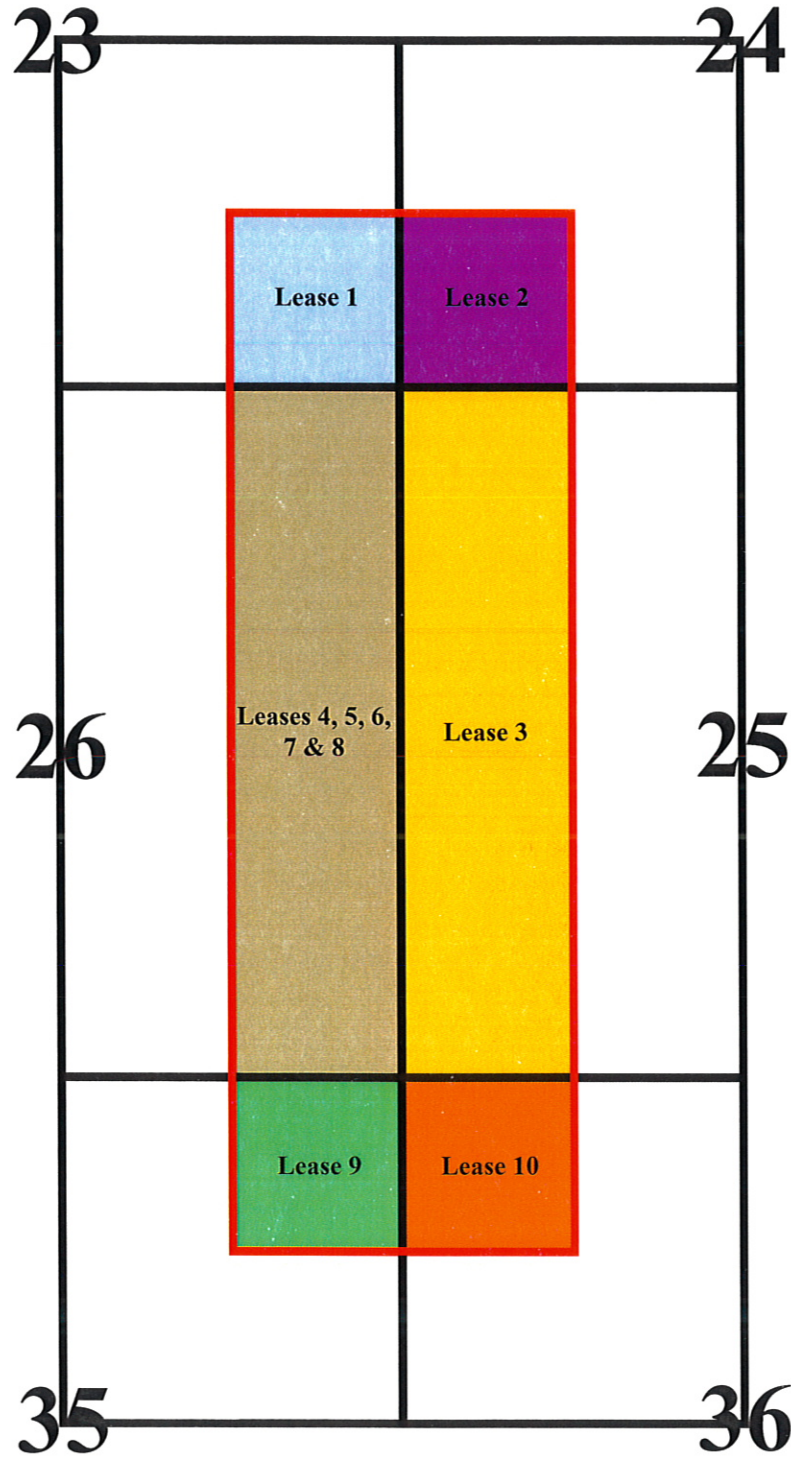


Lease Map – Sater C25-79HN

T4N-R64W Section 23: SE/4SE/4, 24: SW/4SW/4
25: W/2W/2, 26: E/2E/2, 35: NE/4NE/4, 36: NW/4NW/4



Leases:

- 1) SE/4SE/4 of Section 23, T4N-R64W
- 2) All of Section 24, T4N-R64W- State Lease 70/7889-S
- 3) T4N-R63W
 - 19: Lots 1 & 2 (W/2W/2) (149.84), E/2W/2, SE/4
 - 21: NW/4, S/2
 - 27: NW/4, S/2
 - 29: NW/4, S/2
 - 31: Lots 1 & 2 (W/2W/2) (158.72), E/2W/2, SE/4
 - 33: NW/4, S/2T4N-R64W
 - 25: NW/4, S/2
 - 35: NW/4, S/2T3N-R63W
 - 3: Lot 2 (N/2NW/4) (79.90), S/2NW/4, S/2
 - 5: Lot 2 (N/2NW/4) (81.18), S/2NW/4, S/2
 - 9: NW/4, S/2
 - 11: NW/4, S/2
- 4) E/2 & SW/4 of Section 26, T4N-R64W
- 5) E/2 & SW/4 of Section 26, T4N-R64W
- 6) E/2 & SW/4 of Section 26, T4N-R64W
- 7) E/2 & SW/4 of Section 26, T4N-R64W
- 8) E/2 & SW/4 of Section 26, T4N-R64W
- 9) T4N-R64W
 - 35: NE/4, Limited to the Niobrara formation more specifically defined from the stratigraphic equivalent of 6514 feet to the stratigraphic equivalent of 6790 feet, as found in the UPV 35-214 Well located in the NWNE of Section 35-T4N-R64W
- 10) All of Section 36, T4N-R64W- State Lease 81/6051-S

Total Acreage: 9,629.64