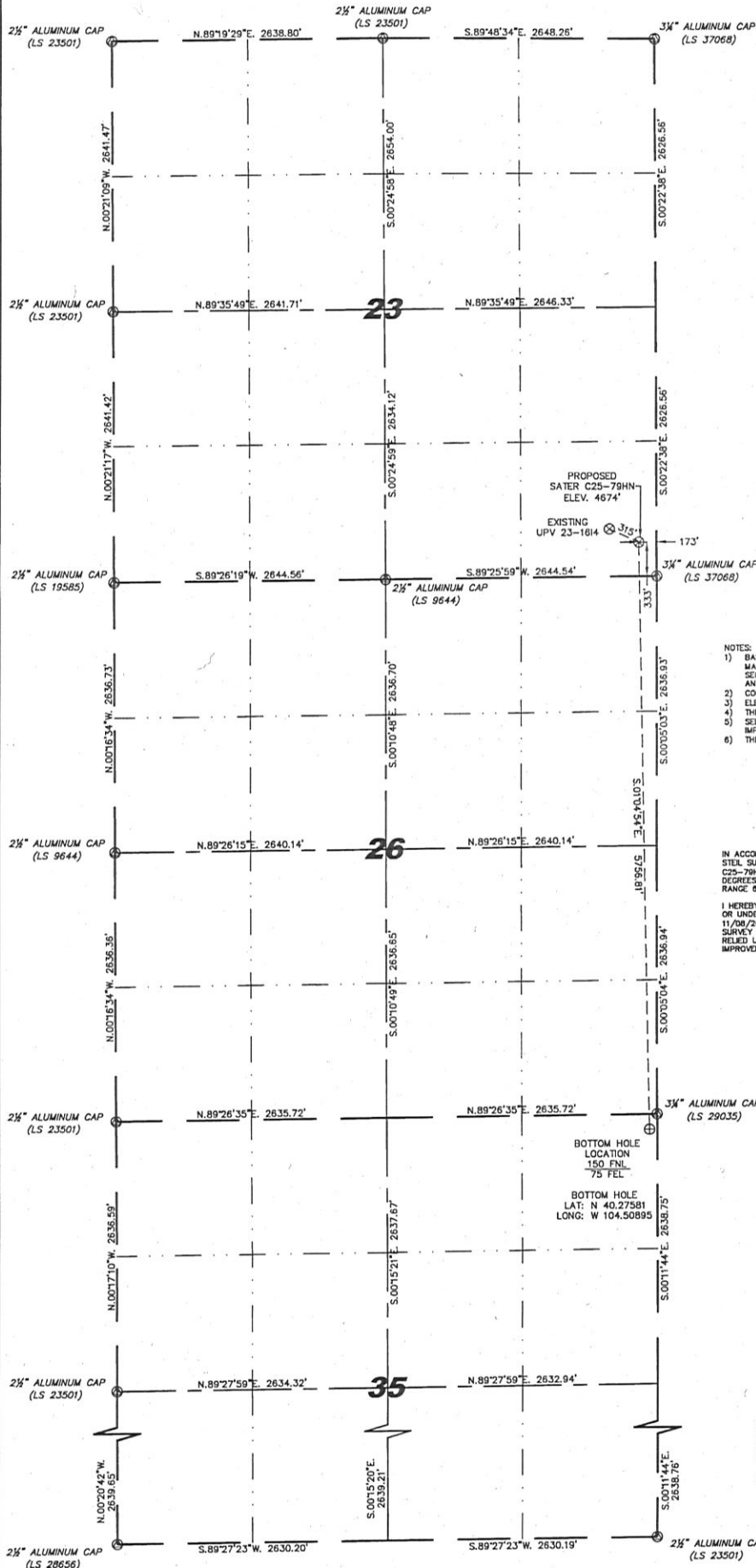


WELL LOCATION CERTIFICATE

THIS MAP DOES NOT REPRESENT A BOUNDARY SURVEY

SECTION 23, 26 & 35
TOWNSHIP 4 NORTH
RANGE 64 WEST



- LEGEND**
- (M) FOUND SURVEY MONUMENT PER MONUMENT RECORD - EXCEPTIONS NOTED.
 - (C) CALCULATED DIMENSION

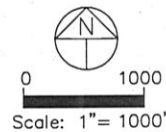
NOTICE: According to Colorado law you MUST commence any legal action based upon any defect in this W.L.C. within three years after you first discover such defect. In no event may any action based upon any defect in this W.L.C. be commenced more than ten years from the said date of the certification shown hereon.

LATITUDE & LONGITUDE (NAD 83 SURFACE HOLE):
LATITUDE: N 40.29162°
LONGITUDE: W 104.50911°
PDOP: 2.1
QUARTER-QUARTER: SE/4SE/4 SEC 23
NEAREST PROPERTY LINE: 173' EAST

- NOTES:**
- 1) BASIS OF BEARINGS FOR THIS MAP ARE BASED UPON GPS OBSERVATIONS MADE ON 11/08/2010 BETWEEN MONUMENTS LOCATED AT THE SOUTHEAST SECTION CORNER AND THE NORTHEAST SECTION CORNER OF SAID SECTION AND WITH ALL BEARINGS SHOWN HEREON RELATIVE THERETO.
 - 2) COORDINATES SHOWN ARE COLORADO STATE PLANE (NORTH ZONE) NAD 83.
 - 3) ELEVATIONS ARE BASED UPON NGS OPUS SOLUTION NAVD 88 DATUM.
 - 4) THE NEAREST EXISTING WELL IS: UPV 23-1614, 315' NORTHWEST.
 - 5) SEE LOCATION DRAWING FOR ALL IMPROVEMENTS WITHIN VISIBLE IMPROVEMENTS LIMIT.
 - 6) THE LOCATION FALLS IN CROP LAND.

IN ACCORDANCE WITH A REQUEST FROM ERIK VAN DEKAR - NOBLE ENERGY INC, STELL SURVEYING SERVICES, LLC HAS DETERMINED THE LOCATION OF THE SATER C25-79HN WELL TO BE 333' FSL: 173' FEL, AS MEASURED AT NINETY (90) DEGREES FROM THE SECTION LINES, SECTION 23, 26 & 35, TOWNSHIP 4 NORTH, RANGE 64 WEST, 6TH PRINCIPLE MERIDIAN, WELD COUNTY, COLORADO.

I HEREBY CERTIFY THAT THIS WELL LOCATION CERTIFICATE WAS PREPARED BY ME, OR UNDER MY DIRECT SUPERVISION, THAT THE FIELD WORK WAS COMPLETED ON 11/08/2010, FOR AND ON BEHALF OF NOBLE ENERGY INC, THAT IT IS NOT A LAND SURVEY PLAT OR AN IMPROVEMENT SURVEY PLAT, AND THAT IT IS NOT TO BE RELIED UPON FOR ESTABLISHMENT OF FENCE, BUILDING, OR OTHER FUTURE IMPROVEMENT LINES.



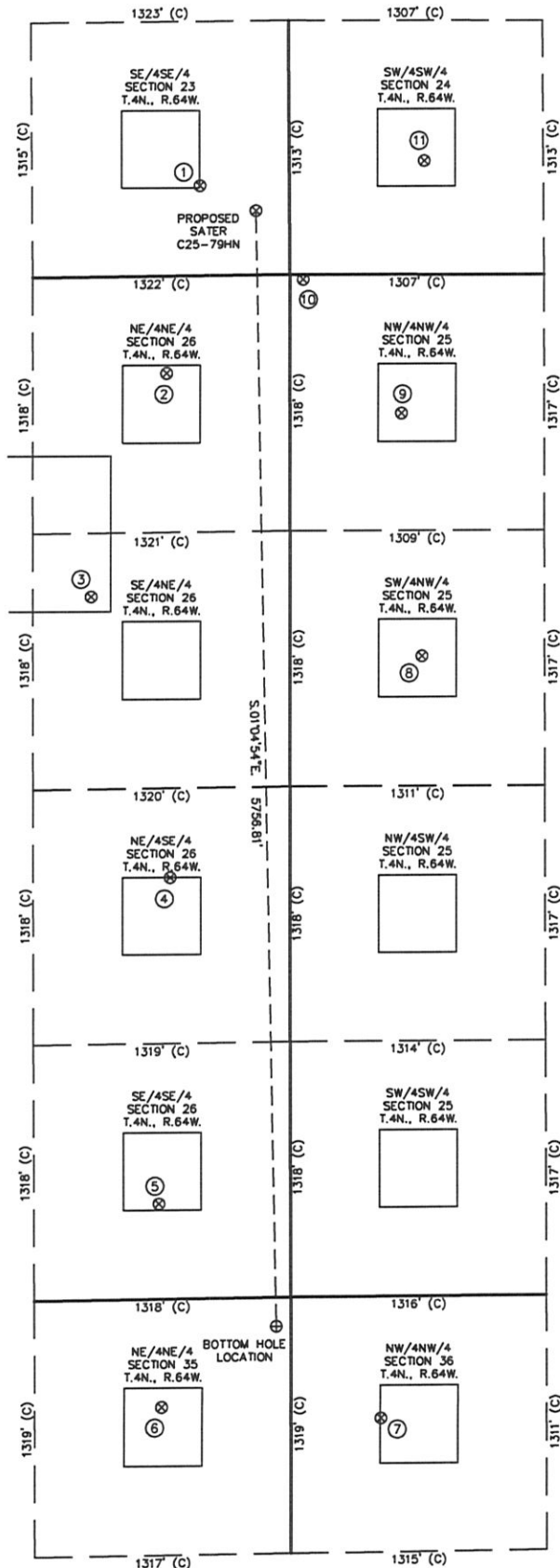
Completed 11/23/2010

David C. Holmes
Professional Land Surveyor Registration No. 32828
State of Colorado

JOB #10086

SITE SKETCH - SATER C25-79HN

SECTIONS 23
TOWNSHIP 4 NORTH
RANGE 64 WEST



①
UPV 23-1614
SE/SE SEC. 23
466' FSL
459' FEL
EL 4670'
N 40.29198
W 104.51013
PDOP 2.1

②
PROSPECT
CO 26-114
NE/NE SEC. 26
500' FNL
634' FEL
EL 4670'
N 40.28933
W 104.51078
PDOP 2.5

③
PROSPECT
CO 26-814
SE/NE SEC. 26
1645' FNL
1021' FEL
EL 4678'
N 40.28619
W 104.51221
PDOP 3.0

④
PROSPECT
CO 26-914
NE/SE SEC. 26
2177' FSL
616' FEL
EL 4680'
N 40.28220
W 104.51081
PDOP 2.8

⑤
PROSPECT
CO 26-1614
SE/SE SEC. 26
491' FSL
678' FEL
EL 4697'
N 40.27758
W 104.51108
PDOP 2.9

⑥
BOOTH C35-01
NE/NE SEC. 35
558' FNL
665' FEL
EL 4694'
N 40.27469
W 104.51107
PDOP 1.9

⑦
STATE C36-4
NW/NW SEC. 36
628' FNL
462' FNL
EL 4723'
N 40.27449
W 104.50704
PDOP 2.2

⑧
UNI UPR C25-5
SW/NW SEC. 25
1966' FNL
679' FNL
EL 4702'
N 40.28528
W 104.50613
PDOP 2.3

⑨
UNI-UPRR 4-25
NW/NW SEC. 24
714' FNL
573' FNL
EL 4707'
N 40.28872
W 104.50646
PDOP 1.9

⑩
ABANDONED WELL
NW/NW SEC. 25
25' FNL
68' FNL
EL 4683'
N 40.29063
W 104.50825
PDOP 2.1

⑪
SPIKE STATE
GWS C24-13
SW/SW SEC. 24
588' FSL
964' FNL
EL 4697'
N 40.29229
W 104.50599
PDOP 2.2

NOTES:
1) THIS SKETCH DOES NOT REPRESENT A BOUNDARY SURVEY.
2) THE DATUM FOR THE LATITUDES AND LONGITUDES ON THIS SKETCH IS NAD83.

