

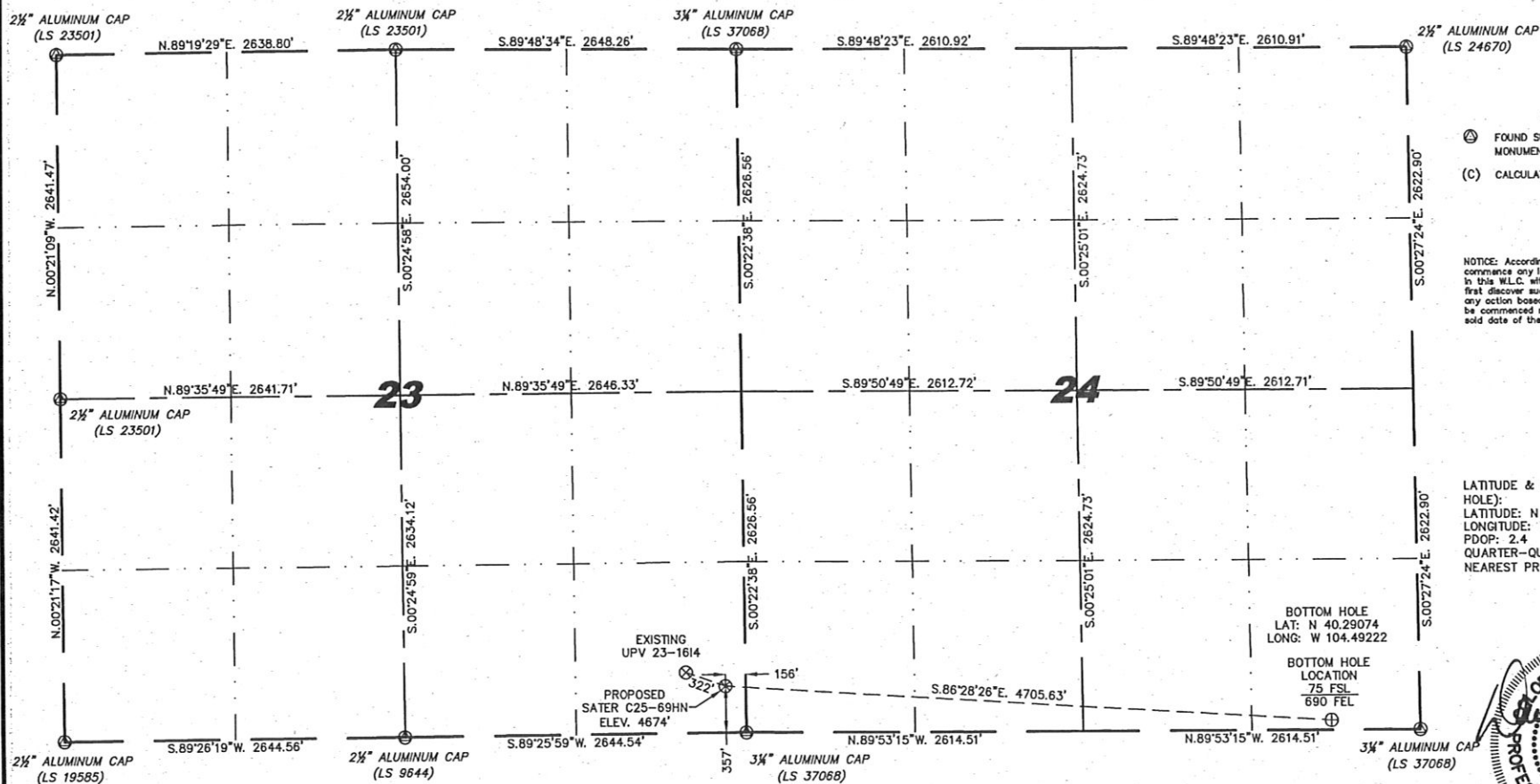
Steil Surveying Services, LLC

1102 West 19th Street P.O. BOX 2073

Cheyenne, Wyoming 82009

**WELL LOCATION CERTIFICATE**  
THIS MAP DOES NOT REPRESENT A BOUNDARY SURVEY

SECTION 23 & 24  
TOWNSHIP 4 NORTH  
RANGE 64 WEST



**LEGEND**

- (A) FOUND SURVEY MONUMENT PER MONUMENT RECORD - EXCEPTIONS NOTED.
- (C) CALCULATED DIMENSION

NOTICE: According to Colorado law you MUST commence any legal action based upon any defect in this W.L.C. within three years after you first discover such defect. In no event may any action based upon any defect in this W.L.C. be commenced more than ten years from the said date of the certification shown hereon.

LATITUDE & LONGITUDE (NAD 83 SURFACE HOLE):  
LATITUDE: N 40.29168°  
LONGITUDE: W 104.50904°  
PDOP: 2.4  
QUARTER-QUARTER: SE/4SE/4 SEC 23  
NEAREST PROPERTY LINE: 156' EAST

**NOTES:**

- 1) BASIS OF BEARINGS FOR THIS MAP ARE BASED UPON GPS OBSERVATIONS MADE ON 11/08/2010 BETWEEN MONUMENTS LOCATED AT THE SOUTHEAST SECTION CORNER AND THE NORTHEAST SECTION CORNER OF SAID SECTION AND WITH ALL BEARINGS SHOWN HEREON RELATIVE THERETO.
- 2) COORDINATES SHOWN ARE COLORADO STATE PLANE (NORTH ZONE) NAD 83.
- 3) ELEVATIONS ARE BASED UPON NGS OPUS SOLUTION NAVD 88 DATUM.
- 4) THE NEAREST EXISTING WELL IS: UPV 23-1614, 322' NORTHWEST.
- 5) SEE LOCATION DRAWING FOR ALL IMPROVEMENTS WITHIN VISIBLE IMPROVEMENTS LIMIT.
- 6) THE LOCATION FALLS IN CROP LAND.



0 1000  
Scale: 1" = 1000'

IN ACCORDANCE WITH A REQUEST FROM ERIK VAN DECAR - NOBLE ENERGY INC., STEIL SURVEYING SERVICES, LLC HAS DETERMINED THE LOCATION OF THE SATER C25-69HN WELL TO BE 357' FSL, 156' FEL, AS MEASURED AT NINETY (90) DEGREES FROM THE SECTION LINES, SECTION 23 & 24, TOWNSHIP 4 NORTH, RANGE 64 WEST, 6TH PRINCIPLE MERIDIAN, WELD COUNTY, COLORADO.

I HEREBY CERTIFY THAT THIS WELL LOCATION CERTIFICATE WAS PREPARED BY ME, OR UNDER MY DIRECT SUPERVISION, THAT THE FIELD WORK WAS COMPLETED ON 11/08/2010, FOR AND ON BEHALF OF NOBLE ENERGY INC, THAT IT IS NOT A LAND SURVEY PLAT OR AN IMPROVEMENT SURVEY PLAT, AND THAT IT IS NOT TO BE RELIED UPON FOR ESTABLISHMENT OF FENCE, BUILDING, OR OTHER FUTURE IMPROVEMENT LINES.

BOTTOM HOLE  
LAT: N 40.29074  
LONG: W 104.49222

BOTTOM HOLE  
LOCATION  
75 FSL  
690 FEL



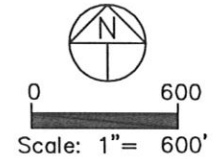
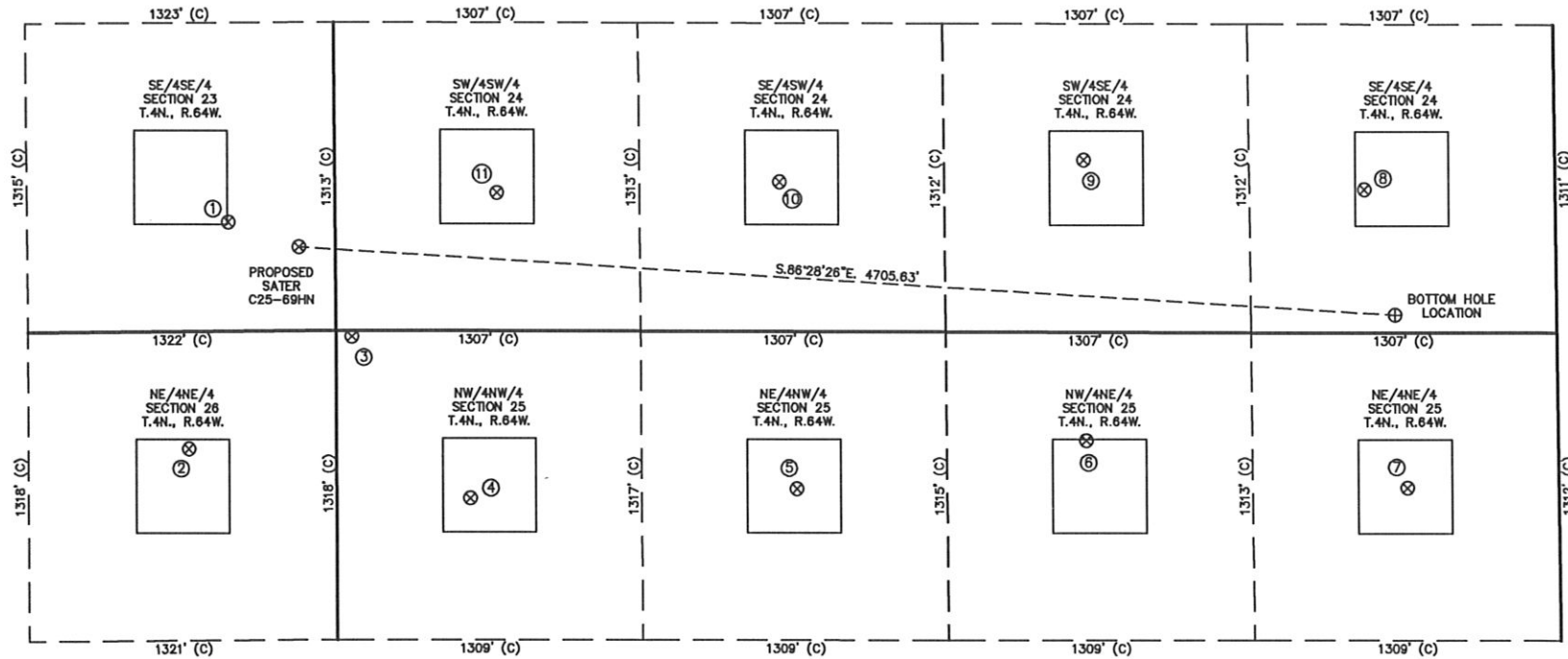
Completed 11/23/2010

David C. Holmes  
Professional Land Surveyor Registration No. 32828  
State of Colorado

JOB #: 10086

# SITE SKETCH - SATER C25-69HN

SECTIONS 23 & 24  
TOWNSHIP 4 NORTH  
RANGE 64 WEST



① UPV 23-1614 SE/SE SEC. 23 466' FSL 459' FEL EL 4870' N 40.29198 W 104.51013 PDOP 2.1	② PROSPECT CO 26-114 NE/NE SEC. 26 500' FNL 634' FEL EL 4870' N 40.28933 W 104.51078 PDOP 2.5	③ ABANDONED WELL NW/NW SEC. 25 25' FNL 68' FWL EL 4883' N 40.29063 W 104.50825 PDOP 2.1	④ UNI-UPRR 4-25 NW/NW SEC. 25 714' FNL 573' FWL EL 4707' N 40.28872 W 104.50646 PDOP 1.4	⑤ UNI-UPR C25-3 NE/NW SEC. 25 670' FNL 1974' FWL EL 4702' N 40.28879 W 104.50144 PDOP 1.4	⑥ UPV 25-214 NW/NE SEC. 25 463' FNL 2017' FEL EL 4720' N 40.28931 W 104.49698 PDOP 2.6	⑦ UPV 25-114 NE/NE SEC. 25 662' FNL 646' FEL EL 4786' N 40.28872 W 104.49207 PDOP 2.8	⑧ SPIKE STATE GWS C24-16 SE/SE SEC. 24 609' FSL 814' FEL EL 4730' N 40.29221 W 104.49266 PDOP 2.6	⑨ SPIKE STATE GWS C24-15 SW/SE SEC. 24 733' FSL 2014' FEL EL 4696' N 40.29260 W 104.49696 PDOP 2.3	⑩ SPIKE STATE GWS C24-14 SE/SW SEC. 24 637' FSL 1907' FWL EL 4715' N 40.29238 W 104.50164 PDOP 2.3	⑪ SPIKE STATE GWS C24-13 SW/SW SEC. 24 588' FSL 694' FWL EL 4697' N 40.29229 W 104.50599 PDOP 2.2
--	--	--	---	--	--	---	--	---	---	--

## NOTES:

- THIS SKETCH DOES NOT REPRESENT A BOUNDARY SURVEY.
- THE DATUM FOR THE LATITUDES AND LONGITUDES ON THIS SKETCH IS NAD83.