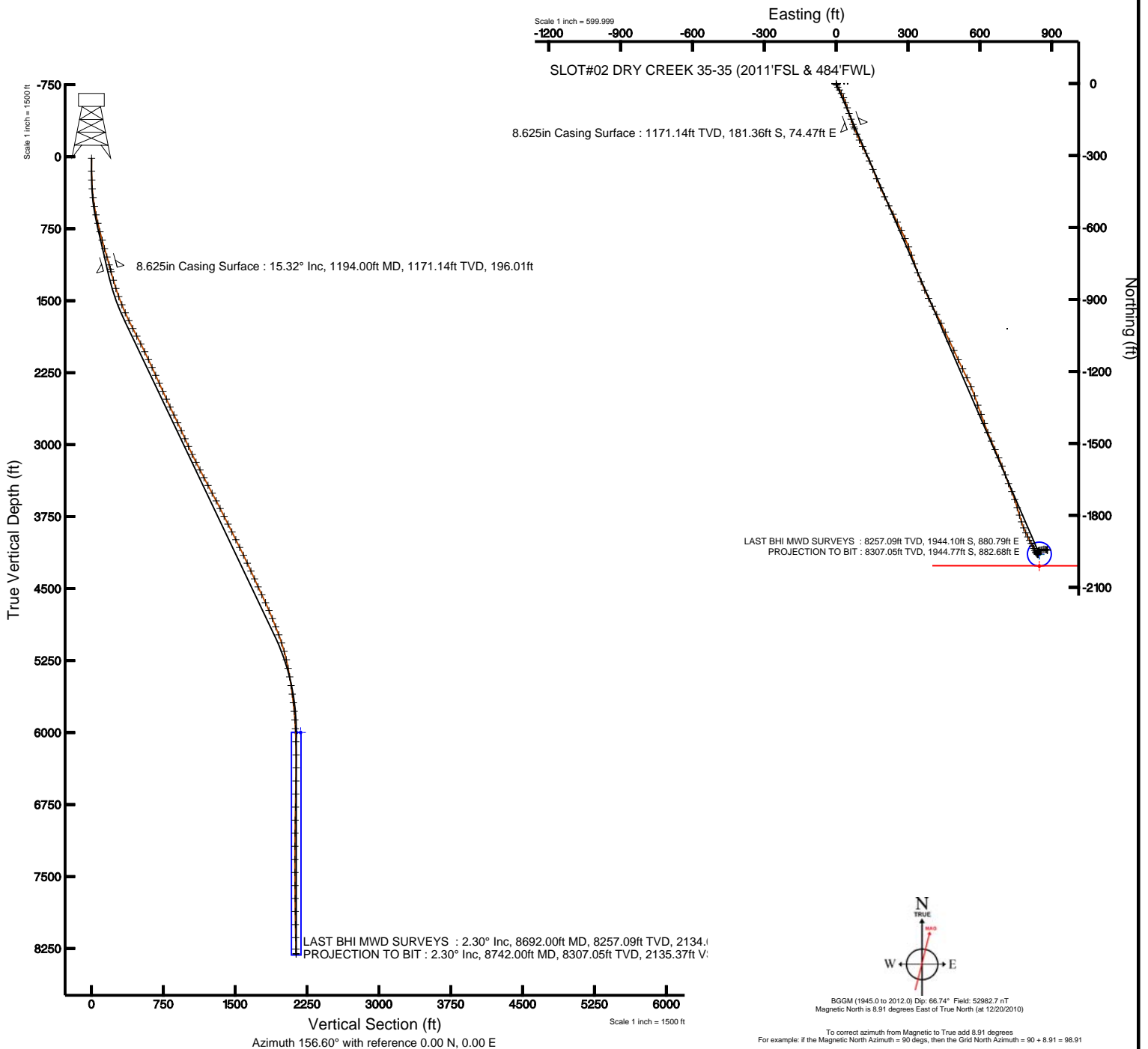




KERR MCGEE OIL & GAS ONSHORE LP

Location: COLORADO Slot: SLOT#02 DRY CREEK 35-35 (2011'FSL & 484'FWL)
Field: WELD COUNTY (KERR MCGEE) Well: DRY CREEK 35-35
Facility: SEC.35-T1N-R67W Wellbore: DRY CREEK 35-35 PWB

| | |
|--|--|
| Plot reference wellpath is DRY CREEK 35-35 (REV-A.0) PWB | |
| True vertical depths are referenced to XTREME 12 (RKB) | Grid System: NAD83 / Lambert Colorado State Planes, Northern Zone (501), US feet |
| Measured depths are referenced to XTREME 12 (RKB) | North Reference: True north |
| XTREME 12 (RKB) to Mean Sea Level: 5045 feet | Scale: True distance |
| Mean Sea Level to Mud line (Facility: SEC.35-T1N-R67W): 0 feet | Depths are in feet |
| Coordinates are in feet referenced to Slot | Created by: cookdamm on 2/7/2011 |





Actual Wellpath Report

DRY CREEK 35-35 awp

Page 1 of 5



INTEQ

REFERENCE WELLPATH IDENTIFICATION

| | | | |
|----------|---------------------------------|----------|--|
| Operator | KERR MCGEE OIL & GAS ONSHORE LP | Slot | SLOT#02 DRY CREEK 35-35 (2011'FSL & 484'FWL) |
| Area | COLORADO | Well | DRY CREEK 35-35 |
| Field | WELD COUNTY (KERR MCGEE) | Wellbore | DRY CREEK 35-35 awb |
| Facility | SEC.35-T1N-R67W | | |

REPORT SETUP INFORMATION

| | | | |
|---------------------|---|----------------------|---------------------------------------|
| Projection System | NAD83 / Lambert Colorado State Planes, Northern Zone (501), US feet | Software System | WellArchitect® 2.0 |
| North Reference | True | User | Cookdanm |
| Scale | 0.999966 | Report Generated | 2/7/2011 at 2:43:26 PM |
| Convergence at slot | 0.41° East | Database/Source file | Denver Server/DRY_CREEK_35-35_awb.xml |

WELLPATH LOCATION

| | Local coordinates | | Grid coordinates | | Geographic coordinates | |
|-----------------------|-------------------|----------|------------------|----------------|------------------------|-----------------|
| | North[ft] | East[ft] | Easting[USft] | Northing[USft] | Latitude | Longitude |
| Slot Location | 0.00 | 16.81 | 3177762.97 | 1245632.11 | 40°00'21.240"N | 104°51'55.512"W |
| Facility Reference Pt | | | 3177746.16 | 1245631.99 | 40°00'21.240"N | 104°51'55.728"W |
| Field Reference Pt | | | 3197771.84 | 1268891.29 | 40°04'09.600"N | 104°47'36.000"W |

WELLPATH DATUM

| | | | |
|--------------------------|-------------------|--|-------------------|
| Calculation method | Minimum curvature | XTREME 12 (RKB) to Facility Vertical Datum | 5045.00ft |
| Horizontal Reference Pt | Slot | XTREME 12 (RKB) to Mean Sea Level | 5045.00ft |
| Vertical Reference Pt | XTREME 12 (RKB) | Facility Vertical Datum to Mud Line (Facility) | 0.00ft |
| MD Reference Pt | XTREME 12 (RKB) | Section Origin | N 0.00, E 0.00 ft |
| Field Vertical Reference | Mean Sea Level | Section Azimuth | 156.60° |



Actual Wellpath Report

DRY CREEK 35-35 awp

Page 2 of 5



REFERENCE WELLPATH IDENTIFICATION

| | | | |
|----------|---------------------------------|----------|--|
| Operator | KERR MCGEE OIL & GAS ONSHORE LP | Slot | SLOT#02 DRY CREEK 35-35 (2011'FSL & 484'FWL) |
| Area | COLORADO | Well | DRY CREEK 35-35 |
| Field | WELD COUNTY (KERR MCGEE) | Wellbore | DRY CREEK 35-35 awb |
| Facility | SEC.35-T1N-R67W | | |

WELLPATH DATA (90 stations) † = interpolated/extrapolated station

| MD [ft] | Inclination [°] | Azimuth [°] | TVD [ft] | Vert Sect [ft] | North [ft] | East [ft] | DLS [°/100ft] | Comments |
|---------|-----------------|-------------|----------|----------------|------------|-----------|---------------|----------|
| 0.00† | 0.000 | 168.200 | 0.00 | 0.00 | 0.00 | 0.00 | 0.00 | |
| 15.00 | 0.000 | 168.200 | 15.00 | 0.00 | 0.00 | 0.00 | 0.00 | |
| 150.00 | 0.400 | 168.200 | 150.00 | 0.46 | -0.46 | 0.10 | 0.30 | |
| 242.00 | 1.700 | 156.600 | 241.98 | 2.14 | -2.03 | 0.70 | 1.42 | |
| 334.00 | 4.500 | 155.500 | 333.84 | 7.11 | -6.57 | 2.74 | 3.04 | |
| 425.00 | 7.300 | 151.000 | 424.35 | 16.44 | -14.87 | 7.03 | 3.12 | |
| 517.00 | 9.600 | 147.500 | 515.34 | 29.83 | -26.46 | 13.98 | 2.56 | |
| 608.00 | 11.700 | 153.100 | 604.77 | 46.54 | -41.09 | 22.24 | 2.57 | |
| 699.00 | 13.300 | 154.800 | 693.61 | 66.21 | -58.79 | 30.87 | 1.80 | |
| 790.00 | 14.400 | 160.800 | 781.97 | 87.96 | -78.95 | 39.05 | 1.99 | |
| 880.00 | 15.200 | 162.900 | 868.98 | 110.85 | -100.79 | 46.20 | 1.07 | |
| 971.00 | 16.200 | 160.500 | 956.59 | 135.37 | -124.16 | 53.94 | 1.31 | |
| 1062.00 | 16.200 | 160.500 | 1043.98 | 160.70 | -148.09 | 62.42 | 0.00 | |
| 1148.00 | 15.200 | 160.100 | 1126.77 | 183.92 | -170.00 | 70.26 | 1.17 | |
| 1222.00 | 15.400 | 158.700 | 1198.14 | 203.43 | -188.28 | 77.13 | 0.57 | |
| 1313.00 | 15.600 | 156.600 | 1285.84 | 227.74 | -210.77 | 86.38 | 0.65 | |
| 1403.00 | 18.500 | 156.200 | 1371.87 | 254.12 | -234.94 | 96.95 | 3.22 | |
| 1494.00 | 20.000 | 151.300 | 1457.79 | 284.06 | -261.80 | 110.25 | 2.42 | |
| 1584.00 | 21.900 | 154.500 | 1541.84 | 316.16 | -290.46 | 124.87 | 2.46 | |
| 1675.00 | 23.800 | 157.000 | 1625.69 | 351.48 | -322.68 | 139.35 | 2.34 | |
| 1766.00 | 26.100 | 158.700 | 1708.20 | 389.86 | -358.24 | 153.80 | 2.65 | |
| 1857.00 | 27.700 | 157.000 | 1789.35 | 431.01 | -396.36 | 169.34 | 1.95 | |
| 1947.00 | 27.000 | 156.200 | 1869.29 | 472.36 | -434.31 | 185.75 | 0.88 | |
| 2038.00 | 27.000 | 155.500 | 1950.37 | 513.67 | -472.00 | 202.66 | 0.35 | |
| 2129.00 | 26.700 | 154.100 | 2031.56 | 554.75 | -509.19 | 220.15 | 0.77 | |
| 2220.00 | 24.700 | 152.000 | 2113.55 | 594.13 | -544.37 | 238.01 | 2.41 | |
| 2310.00 | 24.600 | 151.700 | 2195.35 | 631.53 | -577.47 | 255.72 | 0.18 | |
| 2401.00 | 24.600 | 155.500 | 2278.10 | 669.35 | -611.39 | 272.55 | 1.74 | |
| 2492.00 | 24.600 | 156.600 | 2360.84 | 707.22 | -646.00 | 287.93 | 0.50 | |
| 2583.00 | 24.300 | 157.700 | 2443.68 | 744.89 | -680.71 | 302.56 | 0.60 | |
| 2673.00 | 24.400 | 161.900 | 2525.68 | 781.91 | -715.52 | 315.36 | 1.93 | |
| 2764.00 | 24.700 | 160.800 | 2608.45 | 819.59 | -751.34 | 327.45 | 0.60 | |
| 2855.00 | 26.800 | 159.100 | 2690.41 | 859.05 | -788.46 | 341.03 | 2.45 | |
| 2946.00 | 25.100 | 159.400 | 2772.24 | 898.83 | -825.70 | 355.14 | 1.87 | |
| 3037.00 | 24.700 | 154.700 | 2854.78 | 937.11 | -860.96 | 370.06 | 2.22 | |
| 3128.00 | 24.600 | 155.200 | 2937.49 | 975.05 | -895.34 | 386.13 | 0.25 | |
| 3218.00 | 24.000 | 153.100 | 3019.52 | 1012.05 | -928.67 | 402.26 | 1.17 | |
| 3309.00 | 25.800 | 152.000 | 3102.06 | 1050.26 | -962.66 | 419.94 | 2.04 | |
| 3400.00 | 27.400 | 153.100 | 3183.42 | 1090.91 | -998.82 | 438.71 | 1.84 | |
| 3490.00 | 26.900 | 157.300 | 3263.51 | 1131.94 | -1036.08 | 455.94 | 2.20 | |
| 3581.00 | 28.000 | 153.800 | 3344.27 | 1173.86 | -1074.24 | 473.31 | 2.15 | |
| 3672.00 | 27.900 | 154.800 | 3424.66 | 1216.48 | -1112.67 | 491.81 | 0.53 | |
| 3763.00 | 28.100 | 155.200 | 3505.01 | 1259.18 | -1151.39 | 509.86 | 0.30 | |
| 3854.00 | 27.300 | 153.100 | 3585.58 | 1301.44 | -1189.46 | 528.29 | 1.39 | |
| 3944.00 | 27.300 | 154.500 | 3665.56 | 1342.67 | -1226.49 | 546.52 | 0.71 | |



Actual Wellpath Report

DRY CREEK 35-35 awp

Page 3 of 5



INTEQ

REFERENCE WELLPATH IDENTIFICATION

| | | | |
|----------|---------------------------------|----------|--|
| Operator | KERR MCGEE OIL & GAS ONSHORE LP | Slot | SLOT#02 DRY CREEK 35-35 (2011'FSL & 484'FWL) |
| Area | COLORADO | Well | DRY CREEK 35-35 |
| Field | WELD COUNTY (KERR MCGEE) | Wellbore | DRY CREEK 35-35 awb |
| Facility | SEC.35-T1N-R67W | | |

WELLPATH DATA (90 stations)

| MD [ft] | Inclination [°] | Azimuth [°] | TVD [ft] | Vert Sect [ft] | North [ft] | East [ft] | DLS [°/100ft] | Comments |
|------------|--------------------|----------------|-------------|-------------------|---------------|--------------|------------------|----------------------|
| 4035.00 | 26.600 | 156.600 | 3746.67 | 1383.90 | -1264.02 | 563.59 | 1.30 | |
| 4126.00 | 26.600 | 160.800 | 3828.05 | 1424.59 | -1301.97 | 578.39 | 2.07 | |
| 4217.00 | 27.000 | 161.200 | 3909.27 | 1465.50 | -1340.76 | 591.74 | 0.48 | |
| 4308.00 | 26.200 | 158.700 | 3990.64 | 1506.17 | -1379.03 | 605.70 | 1.51 | |
| 4398.00 | 26.600 | 161.500 | 4071.26 | 1546.10 | -1416.65 | 619.31 | 1.45 | |
| 4489.00 | 26.400 | 158.000 | 4152.71 | 1586.62 | -1454.73 | 633.35 | 1.73 | |
| 4580.00 | 24.400 | 155.900 | 4234.91 | 1625.65 | -1490.65 | 648.61 | 2.41 | |
| 4671.00 | 25.800 | 157.700 | 4317.31 | 1664.24 | -1526.14 | 663.80 | 1.75 | |
| 4761.00 | 23.500 | 155.200 | 4399.11 | 1701.77 | -1560.55 | 678.76 | 2.81 | |
| 4852.00 | 24.500 | 159.400 | 4482.25 | 1738.76 | -1594.69 | 693.01 | 2.17 | |
| 4943.00 | 25.800 | 160.100 | 4564.62 | 1777.37 | -1630.97 | 706.39 | 1.47 | |
| 5034.00 | 24.800 | 159.400 | 4646.89 | 1816.20 | -1667.46 | 719.85 | 1.15 | |
| 5125.00 | 22.700 | 156.600 | 4730.18 | 1852.83 | -1701.44 | 733.54 | 2.62 | |
| 5215.00 | 23.000 | 162.000 | 4813.13 | 1887.70 | -1734.10 | 745.87 | 2.35 | |
| 5306.00 | 22.400 | 163.300 | 4897.08 | 1922.62 | -1767.62 | 756.34 | 0.86 | |
| 5397.00 | 20.200 | 163.300 | 4981.86 | 1955.45 | -1799.28 | 765.84 | 2.42 | |
| 5487.00 | 17.800 | 162.600 | 5066.95 | 1984.57 | -1827.29 | 774.42 | 2.68 | |
| 5578.00 | 15.900 | 157.700 | 5154.04 | 2010.87 | -1852.10 | 783.31 | 2.61 | |
| 5669.00 | 13.100 | 154.800 | 5242.13 | 2033.64 | -1872.97 | 792.44 | 3.18 | |
| 5760.00 | 11.000 | 154.500 | 5331.12 | 2052.63 | -1890.14 | 800.57 | 2.31 | |
| 5850.00 | 9.500 | 151.700 | 5419.68 | 2068.61 | -1904.43 | 807.78 | 1.76 | |
| 5941.00 | 8.500 | 150.600 | 5509.56 | 2082.78 | -1916.90 | 814.65 | 1.12 | |
| 6032.00 | 7.600 | 154.500 | 5599.67 | 2095.48 | -1928.19 | 820.54 | 1.16 | |
| 6123.00 | 6.400 | 152.700 | 5689.99 | 2106.56 | -1938.13 | 825.46 | 1.34 | |
| 6213.00 | 5.200 | 155.500 | 5779.52 | 2115.64 | -1946.30 | 829.45 | 1.37 | |
| 6304.00 | 3.900 | 149.900 | 5870.24 | 2122.84 | -1952.73 | 832.71 | 1.51 | |
| 6395.00 | 2.900 | 146.400 | 5961.07 | 2128.18 | -1957.33 | 835.54 | 1.12 | |
| 6531.00 | 1.800 | 128.500 | 6096.96 | 2133.45 | -1961.52 | 839.11 | 0.96 | |
| 6667.00 | 1.000 | 96.800 | 6232.92 | 2135.93 | -1962.99 | 841.96 | 0.80 | |
| 6803.00 | 0.600 | 33.500 | 6368.91 | 2136.14 | -1962.54 | 843.53 | 0.67 | |
| 6939.00 | 1.000 | 8.900 | 6504.90 | 2134.74 | -1960.77 | 844.11 | 0.38 | |
| 7076.00 | 1.200 | 3.900 | 6641.87 | 2132.46 | -1958.16 | 844.39 | 0.16 | |
| 7212.00 | 1.800 | 328.500 | 6777.83 | 2129.08 | -1954.92 | 843.37 | 0.79 | |
| 7348.00 | 1.000 | 4.400 | 6913.79 | 2125.91 | -1951.91 | 842.35 | 0.85 | |
| 7484.00 | 1.200 | 43.700 | 7049.76 | 2124.31 | -1949.70 | 843.42 | 0.56 | |
| 7620.00 | 1.300 | 55.700 | 7185.73 | 2123.46 | -1947.80 | 845.68 | 0.21 | |
| 7756.00 | 1.400 | 60.900 | 7321.69 | 2123.01 | -1946.12 | 848.41 | 0.12 | |
| 7893.00 | 1.800 | 87.000 | 7458.64 | 2123.59 | -1945.20 | 852.02 | 0.60 | |
| 8029.00 | 2.300 | 74.000 | 7594.56 | 2124.69 | -1944.33 | 856.77 | 0.50 | |
| 8165.00 | 2.300 | 75.000 | 7730.45 | 2125.44 | -1942.88 | 862.03 | 0.03 | |
| 8301.00 | 2.200 | 80.000 | 7866.34 | 2126.44 | -1941.72 | 867.24 | 0.16 | |
| 8437.00 | 1.900 | 103.500 | 8002.26 | 2128.40 | -1941.79 | 872.00 | 0.65 | |
| 8573.00 | 2.000 | 102.800 | 8138.18 | 2131.16 | -1942.84 | 876.51 | 0.08 | |
| 8692.00 | 2.300 | 109.500 | 8257.09 | 2134.01 | -1944.10 | 880.79 | 0.33 | LAST BHI MWD SURVEYS |
| 8742.00 | 2.300 | 109.500 | 8307.05 | 2135.37 | -1944.77 | 882.68 | 0.00 | PROJECTION TO BIT |



Actual Wellpath Report

DRY CREEK 35-35 awb

Page 4 of 5



INTEQ

REFERENCE WELLPATH IDENTIFICATION

| | | | |
|----------|---------------------------------|----------|--|
| Operator | KERR MCGEE OIL & GAS ONSHORE LP | Slot | SLOT#02 DRY CREEK 35-35 (2011'FSL & 484'FWL) |
| Area | COLORADO | Well | DRY CREEK 35-35 |
| Field | WELD COUNTY (KERR MCGEE) | Wellbore | DRY CREEK 35-35 awb |
| Facility | SEC.35-T1N-R67W | | |

HOLE & CASING SECTIONS Ref Wellbore: DRY CREEK 35-35 awb Ref Wellpath: DRY CREEK 35-35 awb

| String/Diameter | Start MD [ft] | End MD [ft] | Interval [ft] | Start TVD [ft] | End TVD [ft] | Start N/S [ft] | Start E/W [ft] | End N/S [ft] | End E/W [ft] |
|------------------------|---------------|-------------|---------------|----------------|--------------|----------------|----------------|--------------|--------------|
| 12.25in Open Hole | 15.00 | 1203.00 | 1188.00 | 15.00 | 1179.82 | 0.00 | 0.00 | -183.58 | 75.32 |
| 8.625in Casing Surface | 15.00 | 1194.00 | 1179.00 | 15.00 | 1171.14 | 0.00 | 0.00 | -181.36 | 74.47 |
| 7.875in Open Hole | 1194.00 | 8742.00 | 7548.00 | 1171.14 | 8307.05 | -181.36 | 74.47 | -1944.77 | 882.68 |

TARGETS

| Name | MD [ft] | TVD [ft] | North [ft] | East [ft] | Grid East [srv ft] | Grid North [srv ft] | Latitude | Longitude | Shape |
|--|---------|----------|------------|-----------|--------------------|---------------------|----------------|-----------------|--------|
| DRY CREEK 35-35 GEO TARGET 50' RADIUS (50'FSL & 1320'FWL, REV-2) | | 6000.00 | -1961.49 | 848.89 | 3178625.84 | 1243676.81 | 40°00'01.856"N | 104°51'44.604"W | circle |
| DRY CREEK 35-35 BHL ON PLAT (48'FSL & 1320'FWL, REV-1) | | 6000.00 | -1963.49 | 848.89 | 3178625.86 | 1243674.81 | 40°00'01.836"N | 104°51'44.604"W | point |
| DRY CREEK 35-35 HARDLINE 50'S OF GEO TARGET | | 6000.00 | -2011.49 | 848.89 | 3178626.20 | 1243626.82 | 40°00'01.362"N | 104°51'44.604"W | point |

WELLPATH COMPOSITION Ref Wellbore: DRY CREEK 35-35 awb Ref Wellpath: DRY CREEK 35-35 awb

| Start MD [ft] | End MD [ft] | Positional Uncertainty Model | Log Name/Comment | Wellbore |
|---------------|-------------|-------------------------------|--|---------------------|
| 15.00 | 1148.00 | ISCWSA MWD, Rev. 2 (Standard) | BHI MWD SURVEYS 12.25 HOLE <150-1148> | DRY CREEK 35-35 awb |
| 1148.00 | 8692.00 | NaviTrak (Standard) | BHI MWD SURVEYS 7.875 HOLE <1222-8692> | DRY CREEK 35-35 awb |
| 8692.00 | 8742.00 | Blind Drilling (std) | Projection to bit | DRY CREEK 35-35 awb |



Actual Wellpath Report

DRY CREEK 35-35 awp

Page 5 of 5



INTEQ

REFERENCE WELLPATH IDENTIFICATION

| | | | |
|----------|---------------------------------|----------|--|
| Operator | KERR MCGEE OIL & GAS ONSHORE LP | Slot | SLOT#02 DRY CREEK 35-35 (2011'FSL & 484'FWL) |
| Area | COLORADO | Well | DRY CREEK 35-35 |
| Field | WELD COUNTY (KERR MCGEE) | Wellbore | DRY CREEK 35-35 awb |
| Facility | SEC.35-T1N-R67W | | |

WELLPATH COMMENTS

| MD [ft] | Inclination [°] | Azimuth [°] | TVD [ft] | Comment |
|------------|--------------------|----------------|-------------|----------------------|
| 8692.00 | 2.300 | 109.500 | 8257.09 | LAST BHI MWD SURVEYS |
| 8742.00 | 2.300 | 109.500 | 8307.05 | PROJECTION TO BIT |