

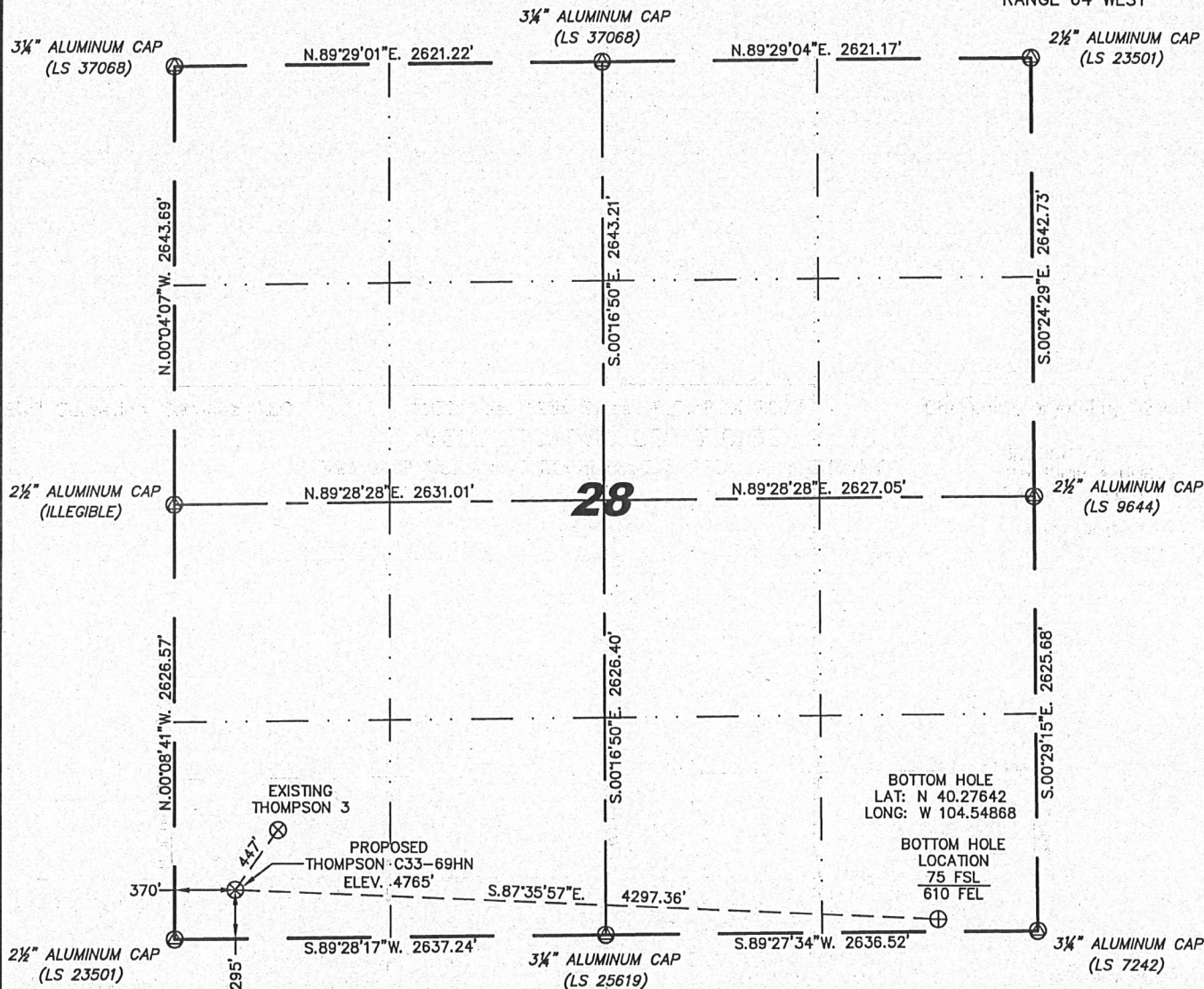
Steil Surveying Services, LLC

1102 West 19th Street P.O. BOX 2073

Cheyenne, Wyoming 82009

WELL LOCATION CERTIFICATE  
THIS MAP DOES NOT REPRESENT A BOUNDARY SURVEY

SECTION 28  
TOWNSHIP 4 NORTH  
RANGE 64 WEST



0 1000  
Scale: 1" = 1000'

IN ACCORDANCE WITH A REQUEST FROM BRIAN DeROSE - NOBLE ENERGY INC, STEIL SURVEYING SERVICES, LLC HAS DETERMINED THE LOCATION OF THE THOMPSON C33-69HN WELL TO BE 295' FSL, 370' FWL, AS MEASURED AT NINETY (90) DEGREES FROM THE SECTION LINES, SECTION 28, TOWNSHIP 4 NORTH, RANGE 64 WEST, 6TH PRINCIPLE MERIDIAN, WELD COUNTY, COLORADO.

I HEREBY CERTIFY THAT THIS WELL LOCATION CERTIFICATE WAS PREPARED BY ME, OR UNDER MY DIRECT SUPERVISION, THAT THE FIELD WORK WAS COMPLETED ON 12/01/2010, FOR AND ON BEHALF OF NOBLE ENERGY INC, THAT IT IS NOT A LAND SURVEY PLAT OR AN IMPROVEMENT SURVEY PLAT, AND THAT IT IS NOT TO BE RELIED UPON FOR ESTABLISHMENT OF FENCE, BUILDING, OR OTHER FUTURE IMPROVEMENT LINES.

NOTES:

- 1) BASIS OF BEARINGS FOR THIS MAP ARE BASED UPON GPS OBSERVATIONS MADE ON 04/15/2008 BETWEEN MONUMENTS LOCATED AT THE SOUTHEAST SECTION CORNER AND THE NORTHEAST SECTION CORNER OF SAID SECTION AND WITH ALL BEARINGS SHOWN HEREON RELATIVE THERETO.
- 2) COORDINATES SHOWN ARE COLORADO STATE PLANE (NORTH ZONE) NAD 83.
- 3) ELEVATIONS ARE BASED UPON NGS OPUS SOLUTION NAVD 88 DATUM.
- 4) THE NEAREST EXISTING WELL IS: THOMPSON 3, 447' NORTHEAST.
- 5) SEE LOCATION DRAWING FOR ALL IMPROVEMENTS WITHIN VISIBLE IMPROVEMENTS LIMIT.
- 6) THE LOCATION FALLS IN PASTURE LAND.

LATITUDE & LONGITUDE (NAD 83 SURFACE HOLE)  
LATITUDE: N 40.27704°  
LONGITUDE: W 104.56406°  
PDOP: 2.5  
QUARTER-QUARTER: SW/4SW/4  
NEAREST PROPERTY LINE: 295' TO THE SOUTH

LEGEND

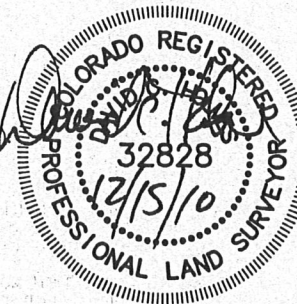
- ⊗ FOUND SURVEY MONUMENT PER MONUMENT RECORD - EXCEPTIONS NOTED.
- (C) CALCULATED DIMENSION

NOTICE: According to Colorado law you MUST commence any legal action based upon any defect in this W.L.C. within three years after you first discover such defect. In no event may any action based upon any defect in this W.L.C. be commenced more than ten years from this said date of the certification shown hereon.

David C. Holmes  
Professional Land Surveyor Registration No. 32828  
State of Colorado

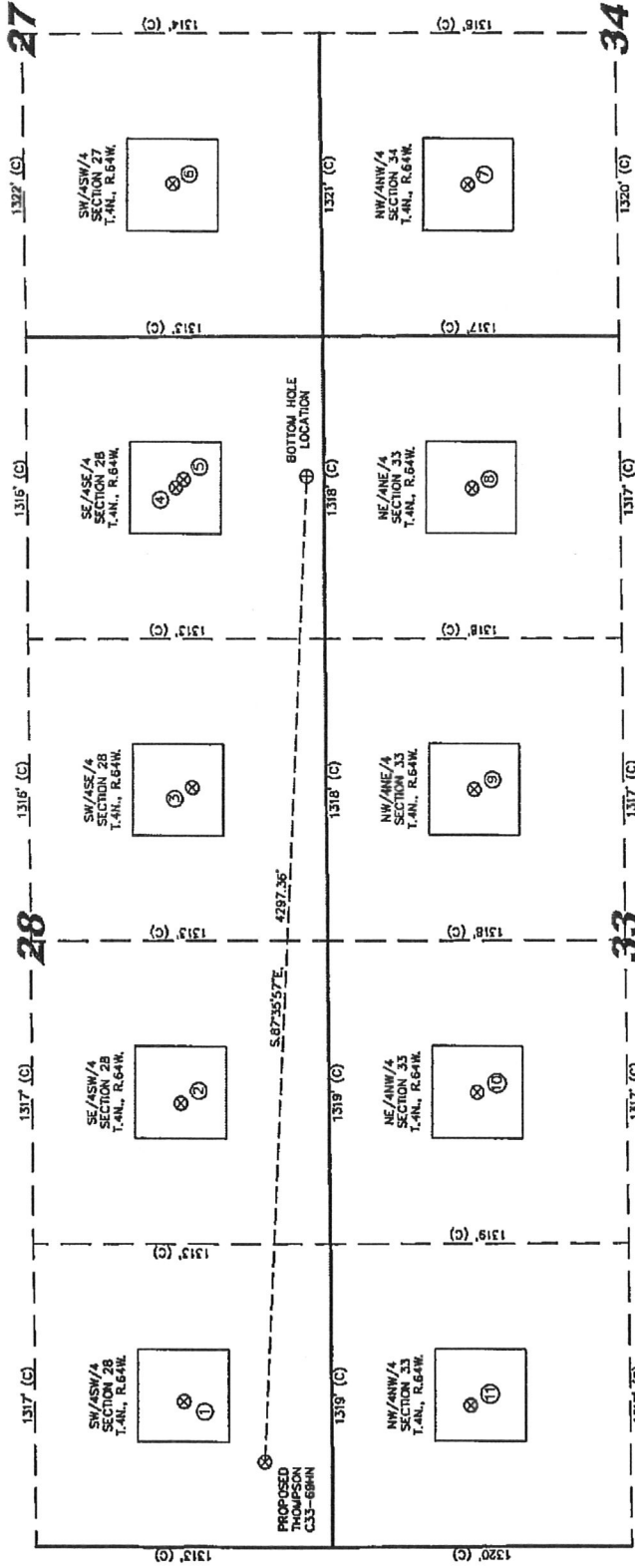
JOB #: 10086

Completed 12/10/2010



# SITE SKETCH - THOMPSON C33-69HN

SECTIONS 28  
TOWNSHIP 4 NORTH  
RANGE 64 WEST



- ① THOMPSON 3  
SW/4SW/4 SECTION 28  
T.4N., R.64W.  
1.44A., 6.64W.  
EL 4757'  
N 40.27802  
W 104.56311  
PDDP 1.9
- ② THOMPSON 28-14  
SE/4SE/4 SECTION 28  
T.4N., R.64W.  
1.44A., 6.64W.  
EL 4757'  
N 40.27802  
W 104.56311  
PDDP 1.9
- ③ THOMPSON 28-16  
SE/4SE/4 SECTION 28  
T.4N., R.64W.  
1.44A., 6.64W.  
EL 4757'  
N 40.27802  
W 104.56311  
PDDP 1.9
- ④ THOMPSON 28-18  
SE/4SE/4 SECTION 28  
T.4N., R.64W.  
1.44A., 6.64W.  
EL 4757'  
N 40.27802  
W 104.56311  
PDDP 1.9
- ⑤ ALOYSIUS 34-1  
NW/4NW/4 SECTION 34  
T.4N., R.64W.  
1.44A., 6.64W.  
EL 4724'  
N 40.27441  
W 104.54413  
PDDP 2.5
- ⑥ LEHELDIT 327-13  
SW/4SW/4 SECTION 27  
T.4N., R.64W.  
1.44A., 6.64W.  
EL 4710'  
N 40.27801  
W 104.54872  
PDDP 2.5
- ⑦ ALOYSIUS 34-1  
NW/4NW/4 SECTION 34  
T.4N., R.64W.  
1.44A., 6.64W.  
EL 4724'  
N 40.27441  
W 104.54413  
PDDP 2.5
- ⑧ LINDSAY 33-7  
NE/4NE/4 SECTION 33  
T.4N., R.64W.  
1.44A., 6.64W.  
EL 4735'  
N 40.27441  
W 104.55359  
PDDP 2.0
- ⑨ LINDSAY 33-8  
NW/4NW/4 SECTION 33  
T.4N., R.64W.  
1.44A., 6.64W.  
EL 4735'  
N 40.27441  
W 104.55359  
PDDP 2.0
- ⑩ LINDSAY 33-10  
NW/4NW/4 SECTION 33  
T.4N., R.64W.  
1.44A., 6.64W.  
EL 4750'  
N 40.27453  
W 104.56319  
PDDP 2.7
- ⑪ LINDSAY 33-11  
NW/4NW/4 SECTION 33  
T.4N., R.64W.  
1.44A., 6.64W.  
EL 4750'  
N 40.27453  
W 104.56319  
PDDP 2.7



- NOTES:
- 1) THIS SKETCH DOES NOT REPRESENT A BOUNDARY SURVEY.
  - 2) THE DATUM FOR THE LATITUDES AND LONGITUDES ON THIS SKETCH IS NAD83.