

NOBLE ENERGY INC WELD COUNTY CO

Well Name: **THOMPSON C33-69HN**

Surface Location: THOMPSON HOR PAD 28-4N-64W
North American Datum 1983 , US State Plane 1983 , Colorado Northern Zone

Ground Elevation: 4766.0

+N/-S	+E/-W	Northing	Easting	Latitude	Longitude	Slot
0.0	0.0	1345145.14	3261136.92	40.277040	-104.564060	
RKB 24' RKB @ 4790.0ft (RKB 24')						

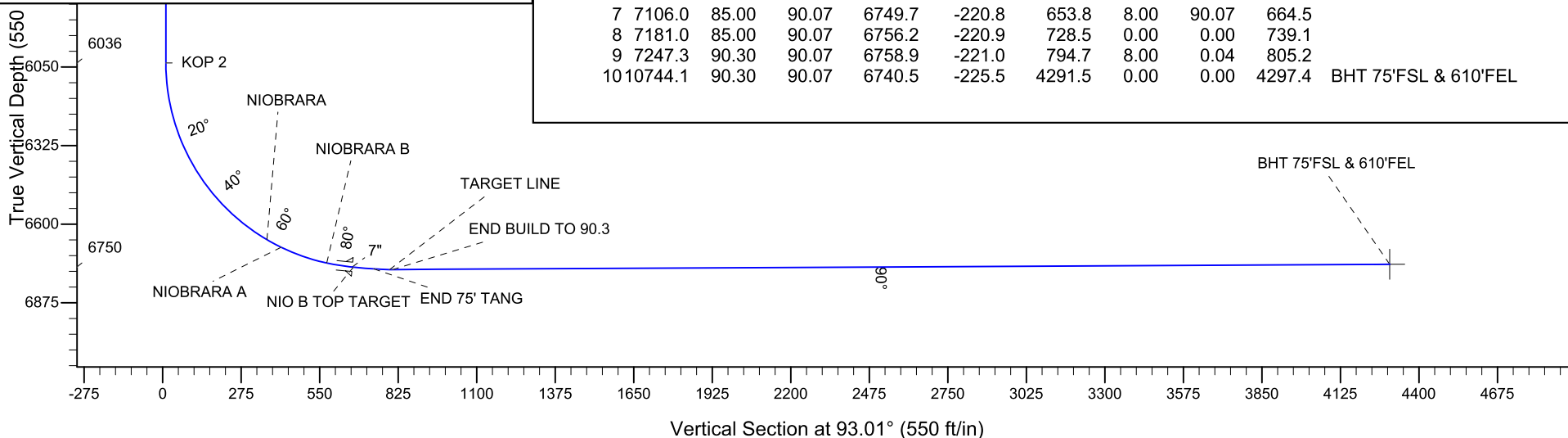
WELLBORE TARGET DETAILS

Name	TVD	+N/-S	+E/-W	Shape
HARDLINE BH 460'FEL	1.0	-300.0	4441.0	Polygon
BHT 75'FSL & 610'FEL	6740.5	-225.5	4291.5	Point

THOMPSON HOR PAD 28-4N-64W
THOMPSON C33-69HN
PLAN 1 (FEB 1, 2011)
13:42, February 01 2011

ANNOTATIONS

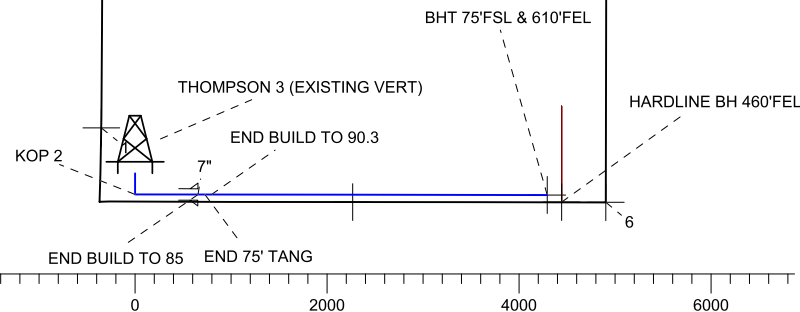
TVD	MD	Annotation
2000.0	2000.0	KOP 1
6035.7	6043.0	KOP 2
6749.7	7106.0	END BUILD TO 85
6756.2	7181.0	END 75' TANG
6758.9	7247.0	END BUILD TO 90.3



South(-)/North(+) (2000 ft/in)

ENSIGN
Directional

SHL 295'FSL & 370'FWL



Azimuths to True North
Magnetic North: 8.75°

Magnetic Field
Strength: 53148.7snT
Dip Angle: 67.01°
Date: 2/1/2011
Model: IGRF200510

SECTION DETAILS

Sec	MD	Inc	Azi	TVD	+N/-S	+E/-W	DLeg	TFace	VSec	Target
1	0.0	0.00	0.00	0.0	0.0	0.0	0.00	0.00	0.0	
2	2000.0	0.00	0.00	2000.0	0.0	0.0	0.00	0.00	0.0	
3	2196.3	3.93	180.00	2196.2	-6.7	0.0	2.00	180.00	0.4	
4	5114.7	3.93	180.00	5107.7	-206.6	0.0	0.00	0.00	10.8	
5	5507.3	0.00	0.00	5500.0	-220.0	0.0	1.00	180.00	11.5	
6	6043.5	0.00	0.00	6036.2	-220.0	0.0	0.00	0.00	11.5	
7	7106.0	85.00	90.07	6749.7	-220.8	653.8	8.00	90.07	664.5	
8	7181.0	85.00	90.07	6756.2	-220.9	728.5	0.00	0.00	739.1	
9	7247.3	90.30	90.07	6758.9	-221.0	794.7	8.00	0.04	805.2	
10	10744.1	90.30	90.07	6740.5	-225.5	4291.5	0.00	0.00	4297.4	BHT 75'FSL & 610'FEL