

Rangely Weber Sand Unit

OLDLAND ERNEST 5X Current Wellbore

03/04/11

Well Details:	
STATE & CO	CO - Rio Blanco
TWNS & RNG	T2N & R102W
SECTION	(SWSE) 36
API	05-103-0853600
CHEVNO	DL1154

Casing Details:		P&A: OLD5X - CS39	
Type	Depth		
KB	5238		
GL	5224		
16 in. #/ft, UNKNOWN	0 - 40', UNKNOWN		
9.625 in. 36 #/ft, K-55	0 - 785', 515 sxs cmt		
7 in. 23 #/ft, K-55	0 - 5324', 375 sxs cmt		
7 in. 23 #/ft, N-80	5324 - 5831'		
7 in. 23 #/ft, N-80	5831 - 6479', 250 sxs cmt		
Perfs, Top:	5942		
Perfs, Btm:	6410		
PBTD:	6450		
TD:	6478		

Formation	Depth
Niobrara	2216
Frontier	3080
Frontier Snd	3164
Mowry	3348
Dakota	3440
Morrison	3530
Curtis	4110
Entrada	4231
Carmel	4404
Navajo	4457
Chinle	5060
Shinarump	5210
Moenkopi	5280
Weber	5928

COGCC Regulations: Set Isolation Packer
within 300' of perfs or 100' above liner

GOC_CALC	5568	FT	PAY
Weber 1a	5927	173	36
Weber 2	6100		
Weber 3a	6110	91	59
Weber 4	6201		
Weber 5a	6234	109	44
Weber 6	6343		
Weber 7a	6352	98	0
Weber 8	0		
Weber 9a	0	0	0
Weber 10	0		
Weber 11a	0	0	0
		471	139
OWC_CALC	6338		

KB 5238
GL 5224
16 in. #/ft, UNKNOWN
0 - 40', UNKNOWN

9.625 in. 36 #/ft, K-55
0 - 785', 515 sxs cmt

7 in. 23 #/ft, K-55
0 - 5324', 375 sxs cmt

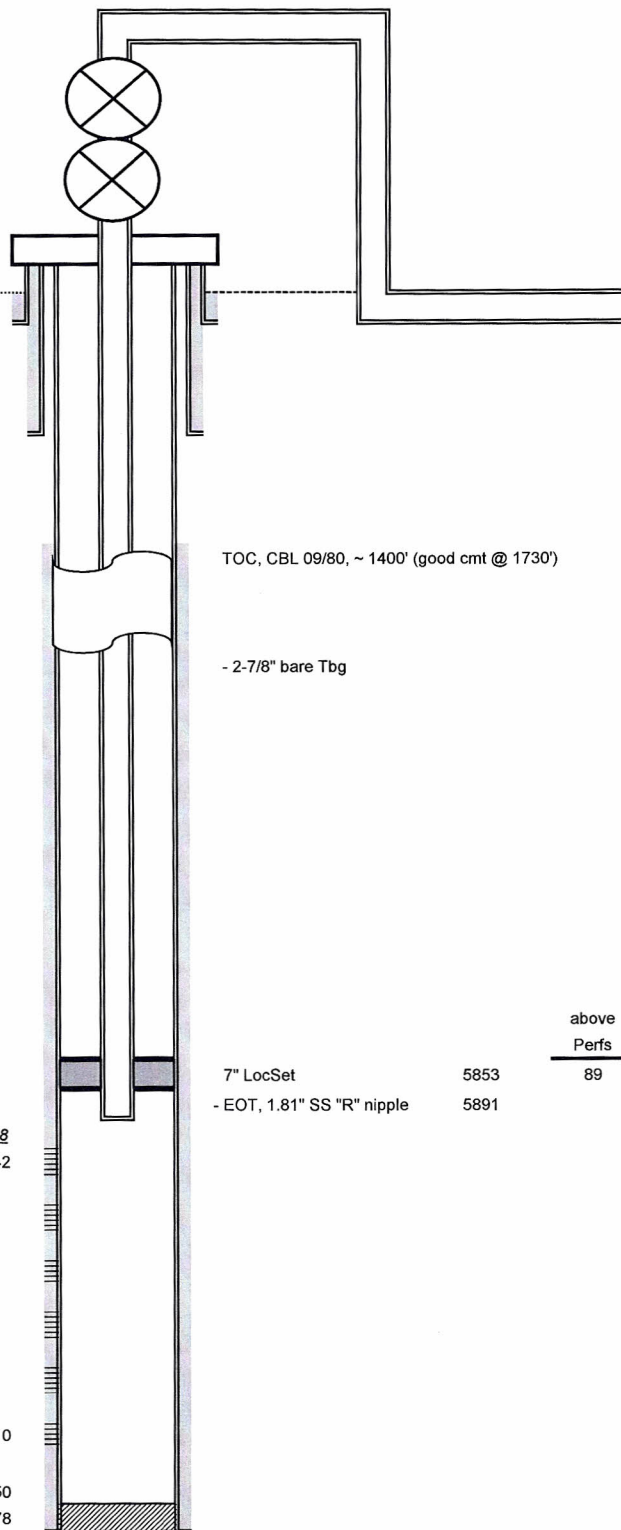
7 in. 23 #/ft, N-80
5324 - 5831'

7 in. 23 #/ft, N-80
5831 - 6479', 250 sxs cmt

Weber 5928
Perfs, Top: 5942

Perfs, Btm: 6410

PBTD: 6450
TD: 6478



TOC, CBL 09/80, ~ 1400' (good cmt @ 1730')

- 2-7/8" bare Tbg

7" LocSet 5853
- EOT, 1.81" SS "R" nipple 5891

above
Perfs
89

Notes:

1- During original completion, perfs Cement squeezed at 5900, 6328 & 6410'

2-

3-