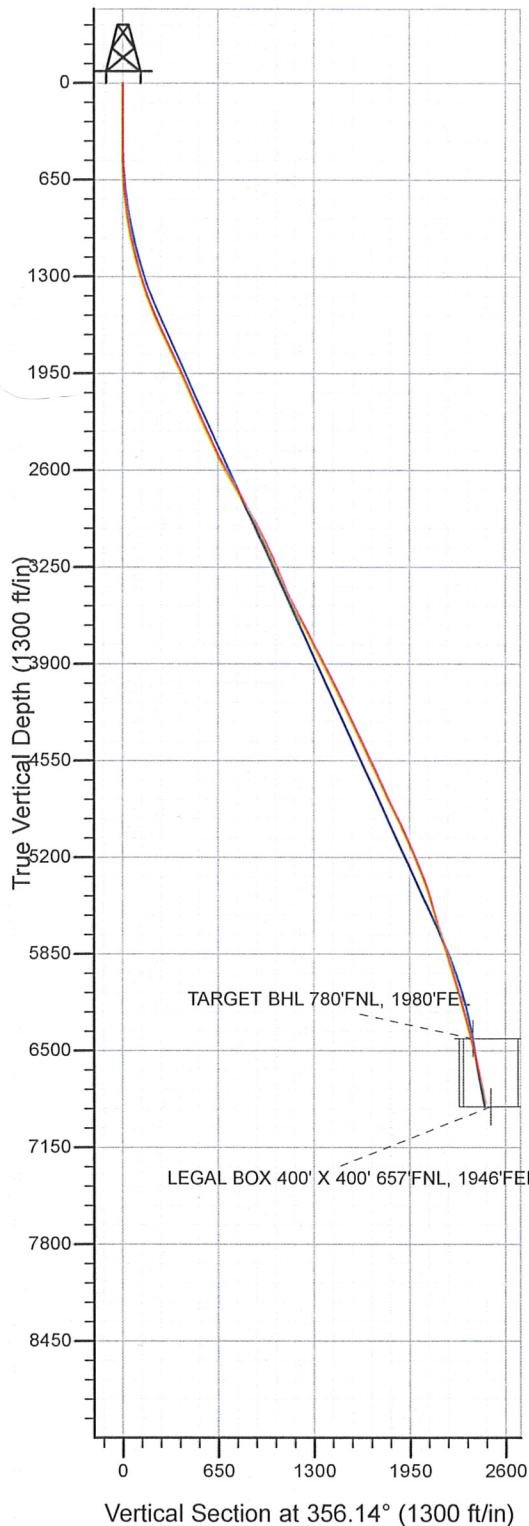
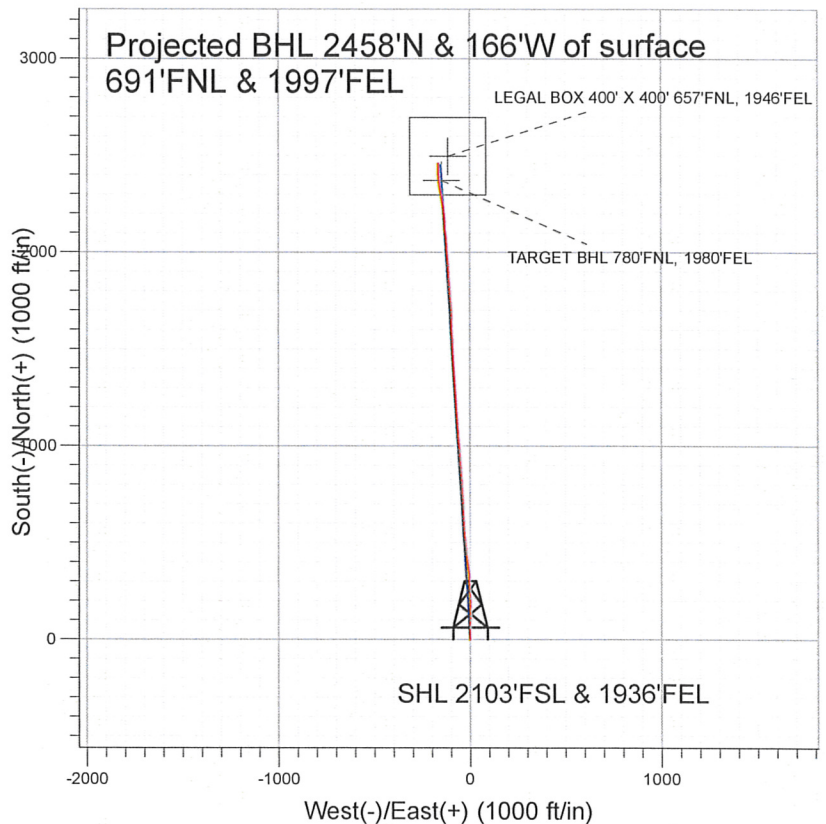


Surface Location: Glover Pad Sec.15-T5N-R64W
 North American Datum 1983 , US State Plane 1983 , Colorado Northern Zone
 Ground Elevation: 4573.0
 +N/-S+E/-W Northing Easting Latitude Longitude Slot
 0.0 0.0 1389247.37 3269147.22 40° 23' 52.296 N 104° 32' 1.068 W
 Original Well Elev WELL @ 4586.0ft (Original Well Elev)



NOBLE ENERGY INC WELD COUNTY CO



LEGEND

- Glover USX B15-02CD, Glover USX B15-02CD, Glover USX B15-02CD Plan #1 V0
- Glover USX B15-02CD
- Survey #1

Final Survey Plot

Projected Final Survey -
 7366'MD & 6857'TVD @ 2464' VS
 10.5 deg Inc 0.0 deg AZ

Project: SEC.15-T5N-R64W
 Site: Glover Pad Sec.15-T5N-R64W
 Well: Glover USX B15-02CD
 Plan: Glover USX B15-02CD

Company: NOBLE ENERGY INC WELD COUNTY CO
Project: SEC.15-T5N-R64W
Site: Glover Pad Sec.15-T5N-R64W
Well: Glover USX B15-02CD
Wellbore: Glover USX B15-02CD
Design: Glover USX B15-02CD

Local Co-ordinate Reference: Well Glover USX B15-02CD
TVD Reference: WELL @ 4586.0ft (Original Well Elev)
MD Reference: WELL @ 4586.0ft (Original Well Elev)
North Reference: True
Survey Calculation Method: Minimum Curvature
Database: EDM den0-adp01 Server Data

Project SEC.15-T5N-R64W, Weld County, Colorado

Map System: US State Plane 1983	System Datum: Mean Sea Level
Geo Datum: North American Datum 1983	Using Well Reference Point
Map Zone: Colorado Northern Zone	Using geodetic scale factor

Site Glover Pad Sec.15-T5N-R64W

Site Position:	Northing: 1,389,247.38 ft	Latitude: 40° 23' 52.296 N
From: Lat/Long	Easting: 3,269,147.22 ft	Longitude: 104° 32' 1.068 W
Position Uncertainty: 0.0 ft	Slot Radius: "	Grid Convergence: 0.62 °

Well Glover USX B15-02CD

Well Position	+N/-S 0.0 ft	Northing: 1,389,247.37 ft	Latitude: 40° 23' 52.296 N
	+E/-W 0.0 ft	Easting: 3,269,147.22 ft	Longitude: 104° 32' 1.068 W
Position Uncertainty	0.0 ft	Wellhead Elevation: ft	Ground Level: 4,573.0 ft

Wellbore Glover USX B15-02CD

Magnetics	Model Name	Sample Date	Declination (°)	Dip Angle (°)	Field Strength (nT)
	IGRF200510	2/12/2009	9.02	67.18	53,421
	IGRF200510	5/11/2009	8.99	67.17	53,396

Design Glover USX B15-02CD

Audit Notes:

Version: 1.0 **Phase:** ACTUAL **Tie On Depth:** 0.0

Vertical Section:	Depth From (TVD) (ft)	+N/-S (ft)	+E/-W (ft)	Direction (°)
	0.0	0.0	0.0	356.14

Survey Program Date 5/27/2009

From (ft)	To (ft)	Survey (Wellbore)	Tool Name	Description
342.0	7,366.0	Survey #1 (Glover USX B15-02CD)	MWD	MWD - Standard

Survey

Measured Depth (ft)	Inclination (°)	Azimuth (°)	Vertical Depth (ft)	+N/-S (ft)	+E/-W (ft)	Vertical Section (ft)	Dogleg Rate (°/100ft)	Build Rate (°/100ft)	Turn Rate (°/100ft)
0.0	0.00	0.00	0.0	0.0	0.0	0.0	0.00	0.00	0.00
342.0	0.20	171.60	342.0	-0.6	0.1	-0.6	0.06	0.06	0.00
427.0	0.40	318.00	427.0	-0.5	-0.1	-0.5	0.68	0.24	172.24
512.0	1.40	353.10	512.0	0.7	-0.4	0.8	1.29	1.18	41.29
598.0	2.70	354.40	597.9	3.8	-0.7	3.8	1.51	1.51	1.51
682.0	3.90	358.10	681.8	8.6	-1.0	8.7	1.45	1.43	4.40
768.0	5.30	356.20	767.5	15.5	-1.4	15.6	1.64	1.63	-2.21
853.0	7.40	358.40	852.0	24.9	-1.8	25.0	2.49	2.47	2.59
938.0	9.70	358.00	936.0	37.5	-2.2	37.6	2.71	2.71	-0.47
1,023.0	11.40	2.30	1,019.6	53.1	-2.1	53.1	2.20	2.00	5.06
1,109.0	13.20	2.40	1,103.6	71.4	-1.4	71.3	2.09	2.09	0.12
1,195.0	14.40	4.70	1,187.1	91.8	-0.1	91.6	1.53	1.40	2.67

Company: NOBLE ENERGY INC WELD COUNTY CO
Project: SEC.15-T5N-R64W
Site: Glover Pad Sec.15-T5N-R64W
Well: Glover USX B15-02CD
Wellbore: Glover USX B15-02CD
Design: Glover USX B15-02CD

Local Co-ordinate Reference: Well Glover USX B15-02CD
TVD Reference: WELL @ 4586.0ft (Original Well Elev)
MD Reference: WELL @ 4586.0ft (Original Well Elev)
North Reference: True
Survey Calculation Method: Minimum Curvature
Database: EDM den0-adp01 Server Data

Survey

Measured Depth (ft)	Inclination (°)	Azimuth (°)	Vertical Depth (ft)	+N/-S (ft)	+E/-W (ft)	Vertical Section (ft)	Dogleg Rate (°/100ft)	Build Rate (°/100ft)	Turn Rate (°/100ft)
1,280.0	16.00	2.90	1,269.2	114.1	1.4	113.7	1.96	1.88	-2.12
1,366.0	18.30	0.60	1,351.3	139.4	2.1	139.0	2.79	2.67	-2.67
1,451.0	20.30	359.20	1,431.6	167.5	2.1	167.0	2.41	2.35	-1.65
1,537.0	22.40	358.70	1,511.6	198.8	1.5	198.3	2.45	2.44	-0.58
1,591.0	23.80	357.20	1,561.3	220.0	0.7	219.4	2.81	2.59	-2.78
1,672.0	24.50	357.70	1,635.2	253.1	-0.8	252.6	0.90	0.86	0.62
1,758.0	25.70	355.90	1,713.1	289.5	-2.8	289.0	1.65	1.40	-2.09
1,843.0	25.90	356.60	1,789.6	326.4	-5.2	326.0	0.43	0.24	0.82
1,928.0	25.00	354.00	1,866.4	362.8	-8.2	362.6	1.69	-1.06	-3.06
2,014.0	24.80	353.70	1,944.4	398.8	-12.1	398.7	0.28	-0.23	-0.35
2,099.0	24.80	353.60	2,021.5	434.3	-16.0	434.4	0.05	0.00	-0.12
2,185.0	24.50	351.90	2,099.7	469.8	-20.5	470.2	0.90	-0.35	-1.98
2,270.0	24.00	351.70	2,177.2	504.4	-25.5	505.0	0.60	-0.59	-0.24
2,356.0	23.40	356.20	2,256.0	538.7	-29.2	539.5	2.22	-0.70	5.23
2,441.0	23.60	357.80	2,333.9	572.6	-31.0	573.4	0.79	0.24	1.88
2,527.0	24.80	355.90	2,412.4	607.8	-32.9	608.6	1.66	1.40	-2.21
2,612.0	26.20	359.50	2,489.1	644.3	-34.3	645.2	2.46	1.65	4.24
2,698.0	28.70	356.60	2,565.4	683.9	-35.7	684.8	3.30	2.91	-3.37
2,783.0	30.70	355.50	2,639.2	725.9	-38.6	726.9	2.44	2.35	-1.29
2,869.0	29.70	356.80	2,713.6	769.1	-41.6	770.2	1.39	-1.16	1.51
2,954.0	29.60	356.10	2,787.4	811.1	-44.2	812.2	0.42	-0.12	-0.82
3,040.0	30.00	356.20	2,862.1	853.7	-47.0	854.9	0.47	0.47	0.12
3,125.0	29.30	357.70	2,935.9	895.7	-49.3	897.0	1.20	-0.82	1.76
3,211.0	27.30	356.00	3,011.6	936.4	-51.5	937.7	2.51	-2.33	-1.98
3,296.0	24.70	356.20	3,088.0	973.6	-54.0	975.0	3.06	-3.06	0.24
3,382.0	24.40	353.10	3,166.3	1,009.1	-57.4	1,010.7	1.54	-0.35	-3.60
3,467.0	22.80	356.40	3,244.2	1,043.0	-60.5	1,044.7	2.44	-1.88	3.88
3,553.0	22.30	355.00	3,323.6	1,075.9	-63.0	1,077.7	0.85	-0.58	-1.63
3,638.0	23.30	357.10	3,401.9	1,108.8	-65.2	1,110.6	1.52	1.18	2.47
3,724.0	26.80	356.80	3,479.8	1,145.1	-67.2	1,147.0	4.07	4.07	-0.35
3,809.0	27.70	356.20	3,555.4	1,184.0	-69.6	1,186.0	1.11	1.06	-0.71
3,895.0	28.20	356.20	3,631.4	1,224.2	-72.2	1,226.3	0.58	0.58	0.00
3,980.0	28.70	356.10	3,706.1	1,264.6	-74.9	1,266.8	0.59	0.59	-0.12
4,066.0	27.70	356.20	3,781.9	1,305.1	-77.7	1,307.4	1.16	-1.16	0.12
4,151.0	27.20	354.10	3,857.3	1,344.2	-81.0	1,346.6	1.28	-0.59	-2.47
4,237.0	27.30	356.20	3,933.8	1,383.4	-84.3	1,385.9	1.12	0.12	2.44
4,322.0	26.90	356.00	4,009.5	1,422.0	-86.9	1,424.6	0.48	-0.47	-0.24
4,407.0	26.80	356.90	4,085.3	1,460.3	-89.3	1,463.0	0.49	-0.12	1.06
4,493.0	26.10	358.30	4,162.3	1,498.6	-90.9	1,501.3	1.09	-0.81	1.63
4,578.0	24.90	357.90	4,239.0	1,535.2	-92.1	1,537.9	1.43	-1.41	-0.47
4,664.0	26.40	355.70	4,316.5	1,572.3	-94.2	1,575.1	2.07	1.74	-2.56
4,749.0	25.60	357.20	4,392.9	1,609.5	-96.5	1,612.4	1.22	-0.94	1.76
4,835.0	25.00	359.90	4,470.7	1,646.3	-97.5	1,649.1	1.51	-0.70	3.14
4,920.0	25.00	0.50	4,547.7	1,682.2	-97.4	1,684.9	0.30	0.00	0.71
5,006.0	23.80	355.80	4,626.0	1,717.7	-98.5	1,720.4	2.65	-1.40	-5.47
5,091.0	24.40	354.40	4,703.6	1,752.2	-101.4	1,755.1	0.97	0.71	-1.65
5,177.0	26.30	354.70	4,781.4	1,788.9	-104.9	1,791.9	2.21	2.21	0.35
5,262.0	26.80	356.80	4,857.4	1,826.8	-107.7	1,829.9	1.25	0.59	2.47
5,348.0	26.50	356.10	4,934.3	1,865.3	-110.1	1,868.5	0.50	-0.35	-0.81
5,433.0	24.90	356.60	5,010.8	1,902.1	-112.5	1,905.3	1.90	-1.88	0.59
5,519.0	23.60	356.60	5,089.3	1,937.3	-114.6	1,940.6	1.51	-1.51	0.00
5,604.0	23.40	352.40	5,167.2	1,971.0	-117.8	1,974.5	1.98	-0.24	-4.94
5,690.0	22.70	356.90	5,246.3	2,004.5	-121.0	2,008.1	2.20	-0.81	5.23
5,775.0	21.30	1.00	5,325.2	2,036.4	-121.6	2,039.9	2.44	-1.65	4.82

Company: NOBLE ENERGY INC WELD COUNTY CO
Project: SEC.15-T5N-R64W
Site: Glover Pad Sec.15-T5N-R64W
Well: Glover USX B15-02CD
Wellbore: Glover USX B15-02CD
Design: Glover USX B15-02CD

Local Co-ordinate Reference: Well Glover USX B15-02CD
TVD Reference: WELL @ 4586.0ft (Original Well Elev)
MD Reference: WELL @ 4586.0ft (Original Well Elev)
North Reference: True
Survey Calculation Method: Minimum Curvature
Database: EDM den0-adp01 Server Data

Survey

Measured Depth (ft)	Inclination (°)	Azimuth (°)	Vertical Depth (ft)	+N/-S (ft)	+E/-W (ft)	Vertical Section (ft)	Dogleg Rate (°/100ft)	Build Rate (°/100ft)	Turn Rate (°/100ft)
5,861.0	19.30	351.40	5,405.8	2,066.0	-123.4	2,069.7	4.51	-2.33	-11.16
5,946.0	15.00	350.80	5,487.0	2,090.8	-127.3	2,094.6	5.06	-5.06	-0.71
6,032.0	16.70	355.40	5,569.8	2,114.1	-130.1	2,118.1	2.46	1.98	5.35
6,117.0	17.20	357.00	5,651.1	2,138.8	-131.7	2,142.8	0.80	0.59	1.88
6,203.0	17.50	356.50	5,733.2	2,164.4	-133.2	2,168.5	0.39	0.35	-0.58
6,288.0	16.90	355.90	5,814.4	2,189.5	-134.8	2,193.6	0.74	-0.71	-0.71
6,374.0	16.60	354.00	5,896.7	2,214.2	-137.0	2,218.4	0.73	-0.35	-2.21
6,459.0	16.80	353.10	5,978.1	2,238.5	-139.8	2,242.8	0.38	0.24	-1.06
6,544.0	16.40	350.30	6,059.6	2,262.5	-143.3	2,267.0	1.05	-0.47	-3.29
6,630.0	16.40	349.60	6,142.1	2,286.4	-147.5	2,291.1	0.23	0.00	-0.81
6,715.0	15.20	348.30	6,223.9	2,309.1	-151.9	2,314.1	1.47	-1.41	-1.53
6,801.0	15.30	347.70	6,306.8	2,331.2	-156.6	2,336.5	0.22	0.12	-0.70
6,886.0	15.00	349.90	6,388.9	2,353.0	-160.9	2,358.5	0.76	-0.35	2.59
6,918.9	14.48	352.11	6,420.7	2,361.3	-162.3	2,366.9	2.32	-1.57	6.71
TARGET BHL 780'FNL, 1980'FEL									
6,972.0	13.70	356.00	6,472.2	2,374.1	-163.6	2,379.8	2.32	-1.48	7.33
7,057.0	13.50	358.30	6,554.8	2,394.1	-164.6	2,399.8	0.68	-0.24	2.71
7,142.0	12.90	357.90	6,637.6	2,413.5	-165.2	2,419.1	0.71	-0.71	-0.47
7,228.0	12.00	358.70	6,721.6	2,432.0	-165.8	2,437.7	1.07	-1.05	0.93
7,314.0	10.50	0.00	6,805.9	2,448.8	-166.0	2,454.4	1.77	-1.74	1.51
7,366.0	10.50	0.00	6,857.0	2,458.3	-166.0	2,463.9	0.00	0.00	0.00
LEGAL BOX 400' X 400' 657'FNL, 1946'FEL									

Wellbore Targets

Target Name

- hit/miss target - Shape	Dip Angle (°)	Dip Dir. (°)	TVD (ft)	+N/-S (ft)	+E/-W (ft)	Northing (ft)	Easting (ft)	Latitude	Longitude
TARGET BHL 780'FN	0.00	0.00	6,419.0	2,369.7	-149.1	1,391,615.22	3,268,972.32	40° 24' 15.713 N	104° 32' 2.995 W
- survey misses target center by 15.7ft at 6918.8ft MD (6420.6 TVD, 2361.3 N, -162.2 E)									
- Point									
LEGAL BOX 400' X 400'	0.00	0.00	6,877.0	2,493.7	-115.1	1,391,739.57	3,269,004.96	40° 24' 16.938 N	104° 32' 2.556 W
- survey misses target center by 65.1ft at 7366.0ft MD (6857.0 TVD, 2458.3 N, -166.0 E)									
- Rectangle (sides W400.0 H400.0 D0.0)									

Checked By: _____ Approved By: _____ Date: _____