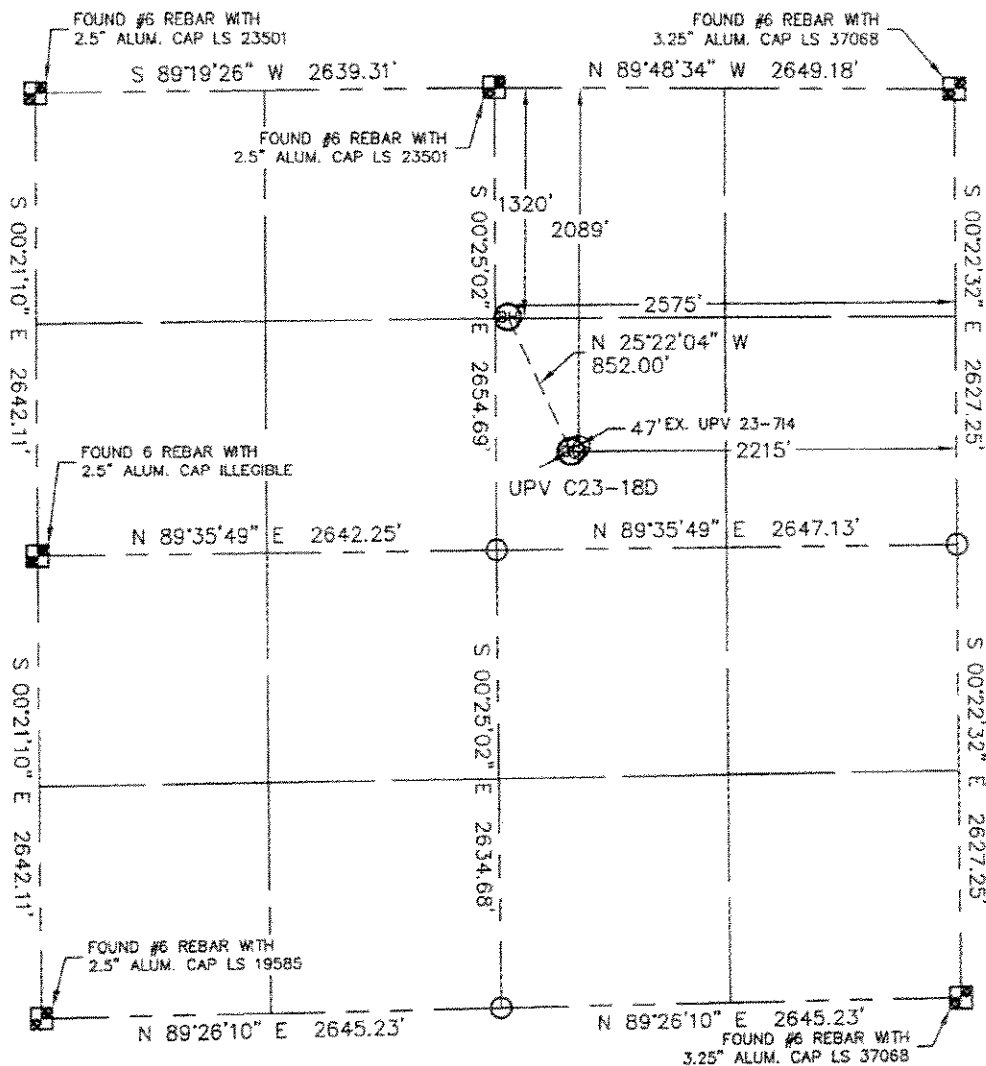


MULTI WELL

SECTION: 23  
TOWNSHIP: 4N  
RANGE: 64W

THIS MAP DOES NOT REPRESENT A BOUNDARY SURVEY



I hereby state that this Well Location Certificate was prepared by me, or under my direct supervision, that the fieldwork was completed on 9/14/10, for and on behalf of Noble Energy Inc., that this is not a Land Survey Plat or an Improvement Survey Plat, and that it is not to be relied upon for establishment of fence, building, or other future improvement lines.

NOTE:

- 1) Bearings shown are Grid Bearings of the Colorado State Plane Coordinate System, North Zone, North American Datum 1983/2007. The lineal dimensions as contained herein are based upon the "U.S. Survey Foot."
- 2) Ground elevations are based on an observed GPS elevation (NAVD 1988 DATUM).
- 3) NEAREST EXISTING WELL: UPV 23-714 47'
- 4) IMPROVEMENTS: See LOCATION DRAWING for all visible improvements within 400' of disturbed area.
- 5) SURFACE USE: CROP IRRIGATED
- 6) INSTRUMENT OPERATOR: BRIAN BRINKMAN


SURFACE LOCATION:  
LATITUDE: 40.299487N  
LONGITUDE: 104.516387W  
POOP: 1.3  
ELEV: 4658  
1/4,1/4: SW1/4NE1/4  
NEAREST PROPERTY LINE

BOTTOM HOLE  
LATITUDE: 40.30160N  
LONGITUDE: 104.51765W

NOTE

**NOTE**  
According to Colorado law, you must commence any legal action based upon any defect in this W.L.C. within three years after you discover such defect. In no event, may any action based upon any defect in this survey be commenced more than ten years after the date of the certificate shown hereon. (13-80-105 C.R.S.)

### LEGEND

 = ALIQUOT MONUMENT AS DESCRIBED  
 = CALCULATED POSITION

Brion T. Brinkman--On:  PROJECT# 2010  
Colorado Licensed Professional  
Land Surveyor No. 38175

