

KERR MCGEE OIL & GAS ONSHORE LP

Location: COLORADO Slot: SLOT#07 BADDING 9-35 (945'FSL & 1583'FEL)
 Field: WELD COUNTY (KERR MCGEE) Well: BADDING 9-35
 Facility: SEC.35-T2N-R66W Wellbore: BADDING 9-35 PWB



Well Profile Data

Design Comment	MD (ft)	Inc (°)	Az (°)	TVD (ft)	Local N (ft)	Local E (ft)	DLS (°/100ft)	VS (ft)
Tie On	15.00	0.000	28.000	15.00	0.00	0.00	0.00	0.00
End of Tangent	200.00	0.000	28.000	200.00	0.00	0.00	0.00	0.00
End of Build	440.00	6.000	28.000	439.56	11.09	5.89	2.50	12.38
End of Tangent	1250.00	6.000	28.000	1245.12	85.84	45.64	0.00	95.83
3D Arc (S)	1957.26	20.000	38.654	1932.62	213.58	139.02	2.00	254.00
End of Tangent (S)	5116.64	20.000	38.654	4901.46	1057.43	813.97	0.00	1334.42
Drop (S)	6116.64	0.000	38.654	5881.27	1192.35	921.88	2.00	1507.17
End of Tangent	8586.36	0.000	38.654	8351.00	1192.35	921.88	0.00	1507.17

Location Information

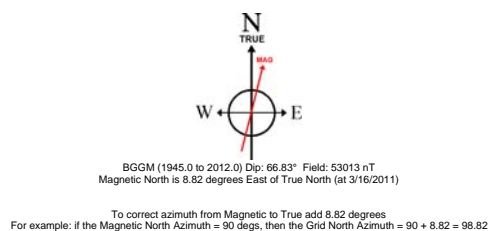
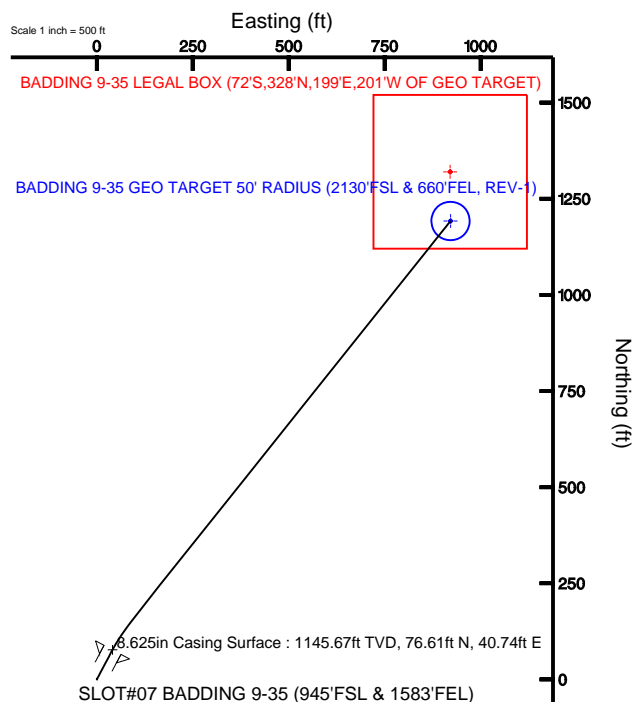
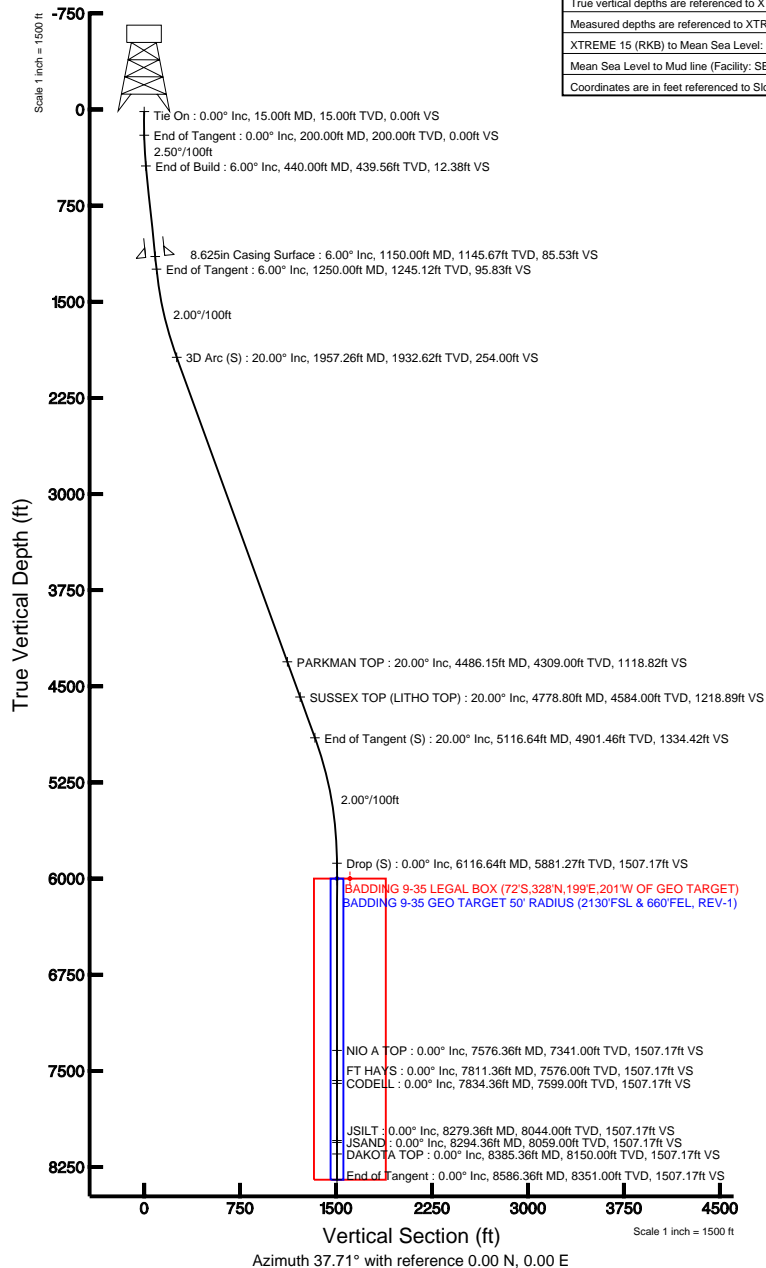
Facility Name			Grid East (USft)	Grid North (USft)	Latitude	Longitude
SEC.35-T2N-R66W			3212437.053	1276504.368	40°05'23.636"N	104°44'26.527"W
Slot	Local N (ft)	Local E (ft)	Grid East (USft)	Grid North (USft)	Latitude	Longitude
SLOT#07 BADDING 9-35 (945'FSL & 1583'FEL)	20.40	56.52	3212493.393	1276525.251	40°05'23.838"N	104°44'25.800"W
XTREME 15 (RKB) to Mud line (Facility: SEC.35-T2N-R66W)					5100ft	
Mean Sea Level to Mud line (Facility: SEC.35-T2N-R66W)					0ft	
XTREME 15 (RKB) to Mean Sea Level					5100ft	

Targets

Name	MD (ft)	TVD (ft)	Local N (ft)	Local E (ft)	Grid East (USft)	Grid North (USft)	Latitude	Longitude
BADDING 9-35 GEO TARGET 50' RADIUS (2130'FSL & 660'FEL, REV-1)		6000.00	1192.35	921.88	3213404.99	1277725.40	40°05'35.621"N	104°44'13.938"W
BADDING 9-35 LEGAL BOX (72'S,328'N,199'E,201'W OF GEO TARGET)		6000.00	1320.35	920.88	3213402.89	1277853.38	40°05'36.886"N	104°44'13.951"W

Plot reference wellpath is BADDING 9-35 (REV-C.0) PWP

True vertical depths are referenced to XTREME 15 (RKB)	Grid System: NAD83 / Lambert Colorado State Planes, Northern Zone (501), US feet
Measured depths are referenced to XTREME 15 (RKB)	North Reference: True north
XTREME 15 (RKB) to Mean Sea Level: 5100 feet	Scale: True distance
Mean Sea Level to Mud line (Facility: SEC.35-T2N-R66W): 0 feet	Depths are in feet
Coordinates are in feet referenced to Slot	Created by: cookdanm on 3/22/2011





Planned Wellpath Report

BADDING 9-35 (REV-C.0) PWP

Page 1 of 5



INTEQ

REFERENCE WELLPATH IDENTIFICATION

Operator	KERR MCGEE OIL & GAS ONSHORE LP	Slot	SLOT#07 BADDING 9-35 (945'FSL & 1583'FEL)
Area	COLORADO	Well	BADDING 9-35
Field	WELD COUNTY (KERR MCGEE)	Wellbore	BADDING 9-35 PWB
Facility	SEC.35-T2N-R66W		

REPORT SETUP INFORMATION

Projection System	NAD83 / Lambert Colorado State Planes, Northern Zone (501), US feet	Software System	WellArchitect@ 2.0
North Reference	True	User	Cookdanm
Scale	0.999961	Report Generated	3/22/2011 at 9:21:06 AM
Convergence at slot	0.49° East	Database/Source file	Denver Server/BADDING_9-35_PWB.xml

WELLPATH LOCATION

	Local coordinates		Grid coordinates		Geographic coordinates	
	North[ft]	East[ft]	Easting[USft]	Northing[USft]	Latitude	Longitude
Slot Location	20.40	56.52	3212493.39	1276525.25	40°05'23.838"N	104°44'25.800"W
Facility Reference Pt			3212437.05	1276504.37	40°05'23.636"N	104°44'26.527"W
Field Reference Pt			3197771.84	1268891.29	40°04'09.600"N	104°47'36.000"W

WELLPATH DATUM

Calculation method	Minimum curvature	XTREME 15 (RKB) to Facility Vertical Datum	5100.00ft
Horizontal Reference Pt	Slot	XTREME 15 (RKB) to Mean Sea Level	5100.00ft
Vertical Reference Pt	XTREME 15 (RKB)	Facility Vertical Datum to Mud Line (Facility)	0.00ft
MD Reference Pt	XTREME 15 (RKB)	Section Origin	N 0.00, E 0.00 ft
Field Vertical Reference	Mean Sea Level	Section Azimuth	37.71°



Planned Wellpath Report

BADDING 9-35 (REV-C.0) PWP

Page 2 of 5



INTEQ

REFERENCE WELLPATH IDENTIFICATION

Operator	KERR MCGEE OIL & GAS ONSHORE LP	Slot	SLOT#07 BADDING 9-35 (945'FSL & 1583'FEL)
Area	COLORADO	Well	BADDING 9-35
Field	WELD COUNTY (KERR MCGEE)	Wellbore	BADDING 9-35 PWB
Facility	SEC.35-T2N-R66W		

WELLPATH DATA (102 stations) † = interpolated/extrapolated station

MD [ft]	Inclination [°]	Azimuth [°]	TVD [ft]	Vert Sect [ft]	North [ft]	East [ft]	DLS [°/100ft]	Comments
0.00†	0.000	28.000	0.00	0.00	0.00	0.00	0.00	
15.00	0.000	28.000	15.00	0.00	0.00	0.00	0.00	Tie On
115.00†	0.000	28.000	115.00	0.00	0.00	0.00	0.00	
200.00	0.000	28.000	200.00	0.00	0.00	0.00	0.00	End of Tangent
215.00†	0.375	28.000	215.00	0.05	0.04	0.02	2.50	
315.00†	2.875	28.000	314.95	2.84	2.55	1.35	2.50	
415.00†	5.375	28.000	414.68	9.93	8.90	4.73	2.50	
440.00	6.000	28.000	439.56	12.38	11.09	5.89	2.50	End of Build
515.00†	6.000	28.000	514.15	20.10	18.01	9.57	0.00	
615.00†	6.000	28.000	613.60	30.41	27.24	14.48	0.00	
715.00†	6.000	28.000	713.06	40.71	36.47	19.39	0.00	
815.00†	6.000	28.000	812.51	51.01	45.70	24.30	0.00	
915.00†	6.000	28.000	911.96	61.31	54.92	29.20	0.00	
1015.00†	6.000	28.000	1011.41	71.62	64.15	34.11	0.00	
1115.00†	6.000	28.000	1110.86	81.92	73.38	39.02	0.00	
1215.00†	6.000	28.000	1210.32	92.22	82.61	43.93	0.00	
1250.00	6.000	28.000	1245.12	95.83	85.84	45.64	0.00	End of Tangent
1315.00†	7.263	30.661	1309.69	103.26	92.38	49.33	2.00	
1415.00†	9.227	33.330	1408.65	117.53	104.51	56.96	2.00	
1515.00†	11.203	35.066	1507.06	135.23	119.17	66.95	2.00	
1615.00†	13.187	36.287	1604.80	156.34	136.31	79.28	2.00	
1715.00†	15.175	37.192	1701.75	180.83	155.94	93.95	2.00	
1815.00†	17.165	37.892	1797.79	208.68	178.01	110.92	2.00	
1915.00†	19.158	38.451	1892.80	239.84	202.51	130.19	2.00	
1957.26	20.000	38.654	1932.62	254.00	213.58	139.02	2.00	3D Arc (S)
2015.00†	20.000	38.654	1986.87	273.75	229.00	151.35	0.00	
2115.00†	20.000	38.654	2080.84	307.94	255.71	172.72	0.00	
2215.00†	20.000	38.654	2174.81	342.14	282.42	194.08	0.00	
2315.00†	20.000	38.654	2268.78	376.34	309.13	215.44	0.00	
2415.00†	20.000	38.654	2362.75	410.54	335.84	236.81	0.00	
2515.00†	20.000	38.654	2456.72	444.73	362.55	258.17	0.00	
2615.00†	20.000	38.654	2550.69	478.93	389.26	279.53	0.00	
2715.00†	20.000	38.654	2644.66	513.13	415.97	300.90	0.00	
2815.00†	20.000	38.654	2738.63	547.33	442.68	322.26	0.00	
2915.00†	20.000	38.654	2832.60	581.52	469.39	343.62	0.00	
3015.00†	20.000	38.654	2926.57	615.72	496.10	364.99	0.00	
3115.00†	20.000	38.654	3020.54	649.92	522.81	386.35	0.00	
3215.00†	20.000	38.654	3114.51	684.12	549.51	407.71	0.00	
3315.00†	20.000	38.654	3208.47	718.31	576.22	429.08	0.00	
3415.00†	20.000	38.654	3302.44	752.51	602.93	450.44	0.00	
3515.00†	20.000	38.654	3396.41	786.71	629.64	471.80	0.00	
3615.00†	20.000	38.654	3490.38	820.90	656.35	493.17	0.00	
3715.00†	20.000	38.654	3584.35	855.10	683.06	514.53	0.00	
3815.00†	20.000	38.654	3678.32	889.30	709.77	535.89	0.00	
3915.00†	20.000	38.654	3772.29	923.50	736.48	557.26	0.00	



Planned Wellpath Report

BADDING 9-35 (REV-C.0) PWP

Page 3 of 5



INTEQ

REFERENCE WELLPATH IDENTIFICATION

Operator	KERR MCGEE OIL & GAS ONSHORE LP	Slot	SLOT#07 BADDING 9-35 (945'FSL & 1583'FEL)
Area	COLORADO	Well	BADDING 9-35
Field	WELD COUNTY (KERR MCGEE)	Wellbore	BADDING 9-35 PWB
Facility	SEC.35-T2N-R66W		

WELLPATH DATA (102 stations) † = interpolated/extrapolated station

MD [ft]	Inclination [°]	Azimuth [°]	TVD [ft]	Vert Sect [ft]	North [ft]	East [ft]	DLS [°/100ft]	Comments
4015.00†	20.000	38.654	3866.26	957.69	763.19	578.62	0.00	
4115.00†	20.000	38.654	3960.23	991.89	789.90	599.98	0.00	
4215.00†	20.000	38.654	4054.20	1026.09	816.61	621.35	0.00	
4315.00†	20.000	38.654	4148.17	1060.29	843.32	642.71	0.00	
4415.00†	20.000	38.654	4242.14	1094.48	870.03	664.07	0.00	
4486.15†	20.000	38.654	4309.00	1118.82	889.03	679.28	0.00	PARKMAN TOP
4515.00†	20.000	38.654	4336.11	1128.68	896.74	685.44	0.00	
4615.00†	20.000	38.654	4430.07	1162.88	923.44	706.80	0.00	
4715.00†	20.000	38.654	4524.04	1197.08	950.15	728.16	0.00	
4778.80†	20.000	38.654	4584.00	1218.89	967.20	741.80	0.00	SUSSEX TOP (LITHO TOP)
4815.00†	20.000	38.654	4618.01	1231.27	976.86	749.53	0.00	
4915.00†	20.000	38.654	4711.98	1265.47	1003.57	770.89	0.00	
5015.00†	20.000	38.654	4805.95	1299.67	1030.28	792.25	0.00	
5115.00†	20.000	38.654	4899.92	1333.87	1056.99	813.62	0.00	
5116.64	20.000	38.654	4901.46	1334.42	1057.43	813.97	0.00	End of Tangent (S)
5215.00†	18.033	38.654	4994.45	1366.47	1082.46	833.99	2.00	
5315.00†	16.033	38.654	5090.06	1395.76	1105.33	852.28	2.00	
5415.00†	14.033	38.654	5186.63	1421.69	1125.58	868.48	2.00	
5515.00†	12.033	38.654	5284.05	1444.23	1143.19	882.57	2.00	
5615.00†	10.033	38.654	5382.20	1463.37	1158.14	894.52	2.00	
5715.00†	8.033	38.654	5480.95	1479.06	1170.40	904.33	2.00	
5815.00†	6.033	38.654	5580.20	1491.31	1179.96	911.97	2.00	
5915.00†	4.033	38.654	5679.80	1500.08	1186.81	917.45	2.00	
6015.00†	2.033	38.654	5779.66	1505.37	1190.94	920.76	2.00	
6115.00†	0.033	38.654	5879.64	1507.17	1192.35	921.88	2.00	
6116.64	0.000	38.654	5881.27 [†]	1507.17	1192.35	921.88	2.00	Drop (S)
6215.00†	0.000	38.654	5979.64	1507.17	1192.35	921.88	0.00	
6315.00†	0.000	38.654	6079.64	1507.17	1192.35	921.88	0.00	
6415.00†	0.000	38.654	6179.64	1507.17	1192.35	921.88	0.00	
6515.00†	0.000	38.654	6279.64	1507.17	1192.35	921.88	0.00	
6615.00†	0.000	38.654	6379.64	1507.17	1192.35	921.88	0.00	
6715.00†	0.000	38.654	6479.64	1507.17	1192.35	921.88	0.00	
6815.00†	0.000	38.654	6579.64	1507.17	1192.35	921.88	0.00	
6915.00†	0.000	38.654	6679.64	1507.17	1192.35	921.88	0.00	
7015.00†	0.000	38.654	6779.64	1507.17	1192.35	921.88	0.00	
7115.00†	0.000	38.654	6879.64	1507.17	1192.35	921.88	0.00	
7215.00†	0.000	38.654	6979.64	1507.17	1192.35	921.88	0.00	
7315.00†	0.000	38.654	7079.64	1507.17	1192.35	921.88	0.00	
7415.00†	0.000	38.654	7179.64	1507.17	1192.35	921.88	0.00	
7515.00†	0.000	38.654	7279.64	1507.17	1192.35	921.88	0.00	
7576.36†	0.000	38.654	7341.00	1507.17	1192.35	921.88	0.00	NIO A TOP
7615.00†	0.000	38.654	7379.64	1507.17	1192.35	921.88	0.00	
7715.00†	0.000	38.654	7479.64	1507.17	1192.35	921.88	0.00	
7811.36†	0.000	38.654	7576.00	1507.17	1192.35	921.88	0.00	FT HAYS
7815.00†	0.000	38.654	7579.64	1507.17	1192.35	921.88	0.00	



Planned Wellpath Report

BADDING 9-35 (REV-C.0) PWP

Page 4 of 5



INTEQ

REFERENCE WELLPATH IDENTIFICATION

Operator	KERR MCGEE OIL & GAS ONSHORE LP	Slot	SLOT#07 BADDING 9-35 (945'FSL & 1583'FEL)
Area	COLORADO	Well	BADDING 9-35
Field	WELD COUNTY (KERR MCGEE)	Wellbore	BADDING 9-35 PWB
Facility	SEC.35-T2N-R66W		

WELLPATH DATA (102 stations) † = interpolated/extrapolated station

MD [ft]	Inclination [°]	Azimuth [°]	TVD [ft]	Vert Sect [ft]	North [ft]	East [ft]	DLS [°/100ft]	Comments
7834.36†	0.000	38.654	7599.00	1507.17	1192.35	921.88	0.00	CODELL
7915.00†	0.000	38.654	7679.64	1507.17	1192.35	921.88	0.00	
8015.00†	0.000	38.654	7779.64	1507.17	1192.35	921.88	0.00	
8115.00†	0.000	38.654	7879.64	1507.17	1192.35	921.88	0.00	
8215.00†	0.000	38.654	7979.64	1507.17	1192.35	921.88	0.00	
8279.36†	0.000	38.654	8044.00	1507.17	1192.35	921.88	0.00	JSILT
8294.36†	0.000	38.654	8059.00	1507.17	1192.35	921.88	0.00	JSAND
8315.00†	0.000	38.654	8079.64	1507.17	1192.35	921.88	0.00	
8385.36†	0.000	38.654	8150.00	1507.17	1192.35	921.88	0.00	DAKOTA TOP
8415.00†	0.000	38.654	8179.64	1507.17	1192.35	921.88	0.00	
8515.00†	0.000	38.654	8279.64	1507.17	1192.35	921.88	0.00	
8586.36	0.000	38.654	8351.00	1507.17	1192.35	921.88	0.00	End of Tangent

HOLE & CASING SECTIONS Ref Wellbore: BADDING 9-35 PWB Ref Wellpath: BADDING 9-35 (REV-C.0) PWP

String/Diameter	Start MD [ft]	End MD [ft]	Interval [ft]	Start TVD [ft]	End TVD [ft]	Start N/S [ft]	Start E/W [ft]	End N/S [ft]	End E/W [ft]
12.25in Open Hole	15.00	1150.00	1135.00	15.00	1145.67	0.00	0.00	76.61	40.74
8.625in Casing Surface	15.00	1150.00	1135.00	15.00	1145.67	0.00	0.00	76.61	40.74
7.875in Open Hole	1150.00	8336.36	7186.36	1145.67	8101.00	76.61	40.74	1192.35	921.88

TARGETS

Name	MD [ft]	TVD [ft]	North [ft]	East [ft]	Grid East [srv ft]	Grid North [srv ft]	Latitude	Longitude	Shape
1) BADDING 9-35 GEO TARGET 50' RADIUS (2130'FSL & 660'FEL, REV-1)		6000.00	1192.35	921.88	3213404.99	1277725.40	40°05'35.621"N	104°44'13.938"W	circle
BADDING 9-35 LEGAL BOX (72'S,328'N,199'E,201'W OF GEO TARGET)		6000.00	1320.35	920.88	3213402.89	1277853.38	40°05'36.886"N	104°44'13.951"W	square

SURVEY PROGRAM Ref Wellbore: BADDING 9-35 PWB Ref Wellpath: BADDING 9-35 (REV-C.0) PWP

Start MD [ft]	End MD [ft]	Positional Uncertainty Model	Log Name/Comment	Wellbore
15.00	8586.36	NaviTrak (Standard)		BADDING 9-35 PWB



Planned Wellpath Report

BADDING 9-35 (REV-C.0) PWP

Page 5 of 5



INTEQ

REFERENCE WELLPATH IDENTIFICATION

Operator	KERR MCGEE OIL & GAS ONSHORE LP	Slot	SLOT#07 BADDING 9-35 (945'FSL & 1583'FEL)
Area	COLORADO	Well	BADDING 9-35
Field	WELD COUNTY (KERR MCGEE)	Wellbore	BADDING 9-35 PWB
Facility	SEC.35-T2N-R66W		

WELLPATH COMMENTS

MD [ft]	Inclination [°]	Azimuth [°]	TVD [ft]	Comment
4486.15	20.000	38.654	4309.00	PARKMAN TOP
4778.80	20.000	38.654	4584.00	SUSSEX TOP (LITHO TOP)
7576.36	0.000	38.654	7341.00	NIO A TOP
7811.36	0.000	38.654	7576.00	FT HAYS
7834.36	0.000	38.654	7599.00	CODELL
8279.36	0.000	38.654	8044.00	JSILT
8294.36	0.000	38.654	8059.00	JSAND
8385.36	0.000	38.654	8150.00	DAKOTA TOP