

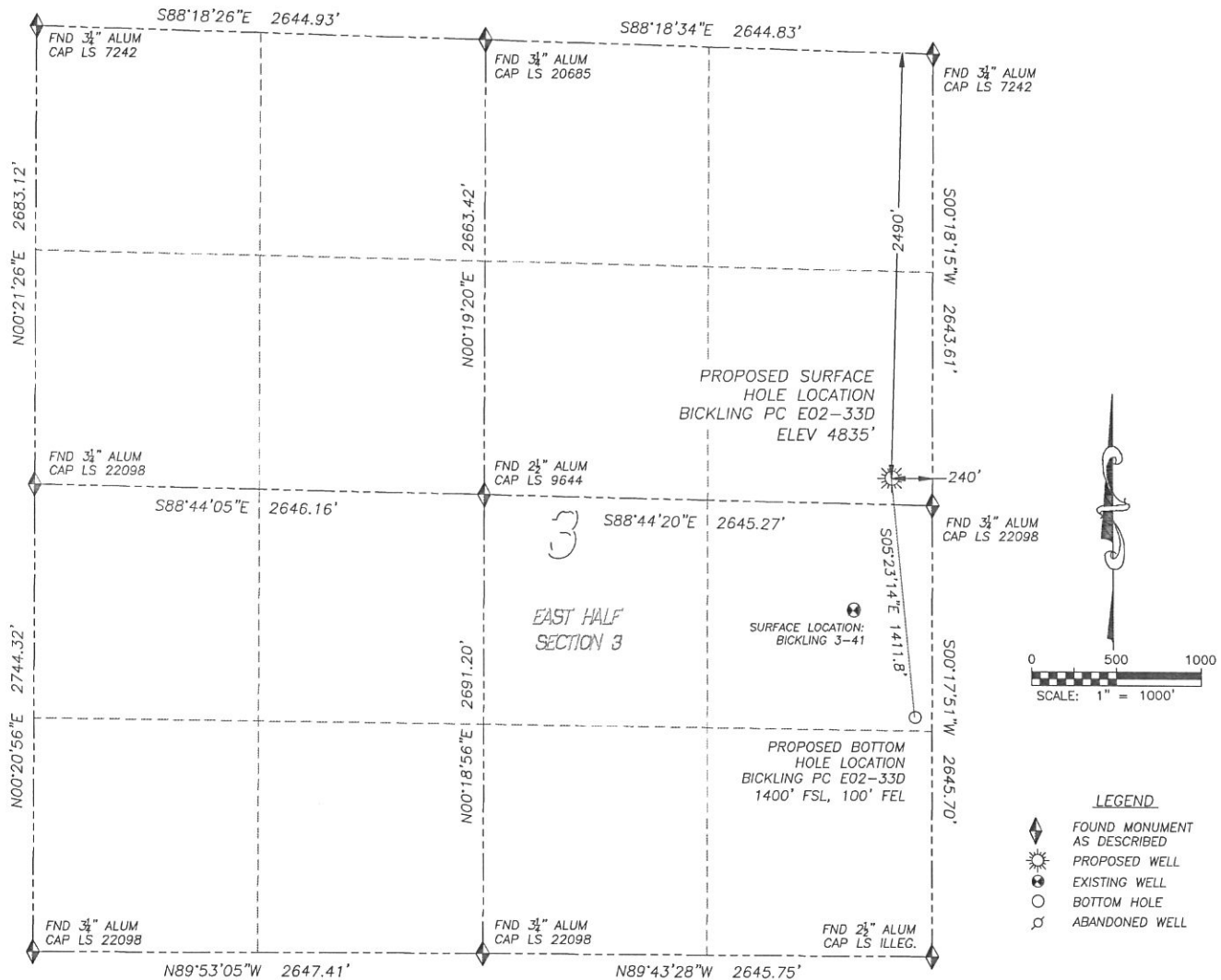
DALEY LAND SURVEYING, INC.

PARKER, CO. 80134

303 953 9841

# WELL LOCATION CERTIFICATE BICKLING PC E02-33D

SECTION 3, TOWNSHIP 6 NORTH, RANGE 65 WEST OF THE 6TH PRINCIPAL MERIDIAN

**NAD 83 LATITUDE AND LONGITUDE****BICKLING PC E02-33D SURFACE HOLE:**

LATITUDE: N40.51619°

LONGITUDE: W104.64063°

ELEVATION: 4835'

FOOTAGE: 2490' FNL, 240' FEL

PDOP: 1.4

QTR/QTR: SE4/NE4

PROP LINE: 155'± SOUTH

**BOTTOM HOLE:**

LATITUDE: N40.51233°

LONGITUDE: W104.64016°

FOOTAGE: 1400' FSL, 100' FEL

**NEAREST EXISTING WELL:**

BICKLING 3-41 SURFACE HOLE

LATITUDE: N40.51407°

LONGITUDE: W104.64144°

ELEVATION: 4831'

806' SOUTHWEST

IN ACCORDANCE WITH A REQUEST FROM JOE JOHNSON OF NOBLE ENERGY INC., DALEY LAND SURVEYING, INC. HAS DETERMINED THE SURFACE LOCATION OF THE BICKLING PC E02-33D WELL TO BE 2490' FNL, 240' FEL, AS MEASURED AT NINETY (90) DEGREES FROM THE SECTION LINES OF SECTION 3, TOWNSHIP 6 NORTH, RANGE 65 WEST OF THE 6TH PRINCIPAL MERIDIAN, WELD COUNTY, COLORADO. THE BOTTOM HOLE LOCATION, PROVIDED BY THE CLIENT, IS TO BE 1400' FSL, 100' FEL.

I HEREBY CERTIFY THAT THIS WELL LOCATION CERTIFICATE WAS PREPARED BY ME OR UNDER MY DIRECT SUPERVISION, THAT THE WORK WAS COMPLETED ON 12/13/2010 FOR AND ON BEHALF OF NOBLE ENERGY, INC., AND THAT THIS MAP DOES NOT REPRESENT A BOUNDARY SURVEY, IT IS NOT A LAND SURVEY PLAT OR AN IMPROVEMENT SURVEY PLAT AND IT IS NOT TO BE RELIED UPON FOR THE ESTABLISHMENT OF FENCE, BUILDING OR OTHER FUTURE IMPROVEMENT LINES.

**NOTES:**

- 1) BEARINGS FOR THIS MAP ARE ASSUMED AND BASED UPON GPS OBSERVATIONS MADE BETWEEN MONUMENTS LOCATED AT THE NORTHEAST CORNER AND EAST QUARTER CORNER OF SECTION 3, T.6N., R.65W.
- 2) HORIZONTAL DATUM IS NAD83.
- 3) VERTICAL DATUM IS NAVD88. ELEVATIONS ARE DERIVED FROM GPS OBSERVATIONS PROCESSED THROUGH OPUS, UTILIZING THE GEOID03 MODEL.
- 4) SEE LOCATION DRAWING FOR VISIBLE IMPROVEMENTS WITHIN 600' OF PROPOSED SURFACE HOLE LOCATION.
- 5) SURFACE USE: FIELD / PASTURE.

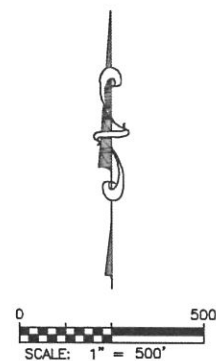
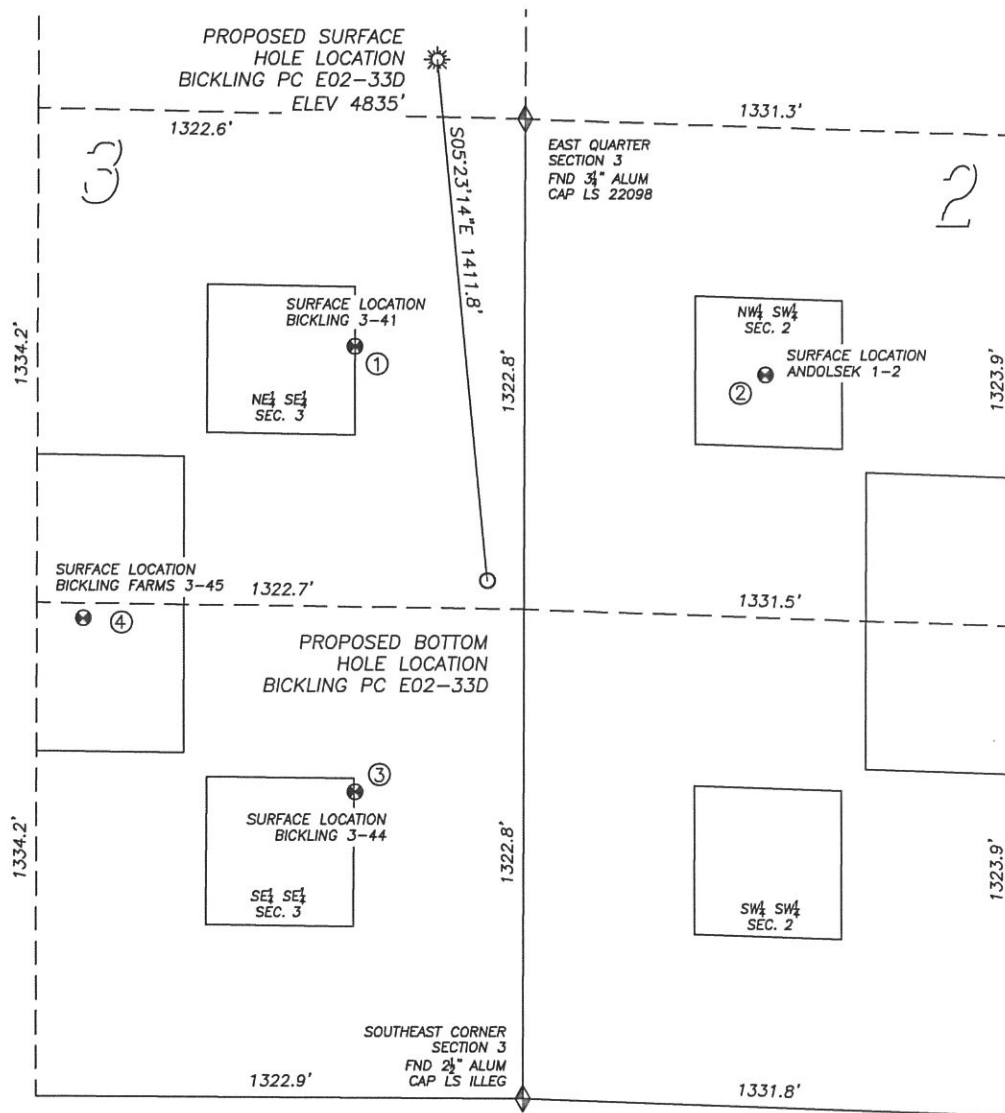
NOTICE: According to Colorado law you MUST commence any legal action based upon any defect in this W.L.C. within three years after you first discover such defect. In no event may any action based upon any such defect in this W.L.C. be commenced more than ten years from the date of the certification shown herein.








FOR AND ON BEHALF OF  
DALEY LAND SURVEYING INC.,  
Robert Daley, PLS 35597

## SITE SKETCH BICKLING PC E02-33D

SECTION 3, TOWNSHIP 6 NORTH, RANGE 65 WEST OF THE 6TH PRINCIPAL MERIDIAN



LEGEND

-  FOUND MONUMENT  
 AS DESCRIBED  
 PROPOSED WELL  
 EXISTING WELL  
 BOTTOM HOLE  
 ABANDONED WELL

- ① BICKLING 3-41  
NE/SE SEC. 3  
2030' FSL, 462' FEL  
726' NW OF PROPOSED  
BOTTOM HOLE LOCATION  
LAT. N40.51407°  
LONG. W104.64144°  
ELEV. 4831'  
PDOP 2.4

② ANDOLSEK 1-2  
NW/SW SEC. 2  
1977' FSL, 656' FWL  
940' NE OF PROPOSED  
BOTTOM HOLE LOCATION  
LAT. N40.51386°  
LONG. W104.63743°  
ELEV. 4840'  
PDOP 1.9

③ BICKLING 3-44  
SE/SE SEC. 3  
826' FSL, 458' FEL  
677' SW OF PROPOSED  
BOTTOM HOLE LOCATION  
LAT. N40.51076°  
LONG. W104.64146°  
ELEV. 4818'  
PDOP 1.7

④ BICKLING FARMS 3-45  
SE/SE SEC. 3  
1292' FSL, 1197' FEL  
1102' W OF PROPOSED  
BOTTOM HOLE LOCATION  
LAT. N40.51205°  
LONG. W104.64410°  
ELEV. 4813'  
PDOP 2.6

NOTES:

- 1) THIS DOES NOT REPRESENT A BOUNDARY SURVEY
- 2) THE LATITUDES AND LONGITUDES SHOWN ARE REFERENCED TO NAD83
- 3) DATUM FOR ELEVATION IS NAVD88. ELEVATIONS ARE DERIVED FROM GPS-RTK OBSERVATIONS PROCESSED THROUGH OPUS, UTILIZING THE GEOID03 MODEL.

