

# WELL LOCATION CERTIFICATE

THIS MAP DOES NOT REPRESENT A BOUNDARY SURVEY

SECTION 16  
TOWNSHIP 3 NORTH  
RANGE 65 WEST

NW COR. SEC. 16  
FOUND 2.5" AC  
PLS 23501

S 89°41'08" W 5121.46'

NE COR. SEC. 16  
FOUND 3.25" BC  
PLS 16415

S 00°30'01" E 5282.53'

16

N 00°41'37" W 5261.90'

155'

EXISTING MEGAN H 16-33

MEGAN  
H16-99HZ  
ELEV= 4356'

DISPLACEMENT  
S 85°34'55" E 4498.23'

500'

SW COR. SEC. 16  
FOUND 2.5" AC  
PLS 32829

N 89°27'16" E 5139.20'

SE COR. SEC. 16  
FOUND 3.25" BC  
PLS 16415



IN ACCORDANCE WITH A REQUEST FROM JOE JOHNSON - NOBLE ENERGY INC., BASELINE ENGINEERING CORP. HAS DETERMINED THE LOCATION OF THE MEGAN H16-99HZ TO BE 1240' FSL AND 155' FWL, AS MEASURED AT NINETY (90) DEGREES FROM THE SECTION LINE OF SECTION 16, TOWNSHIP 3 NORTH, RANGE 65 WEST AND THE BOTTOM HOLE LOCATION TO BE 850' FSL AND 500' FEL OF SECTION 16, TOWNSHIP 3 NORTH, RANGE 65 WEST, 6TH PRINCIPAL MERIDIAN, WELD COUNTY, COLORADO.

I HEREBY CERTIFY THAT THIS WELL LOCATION CERTIFICATE WAS PREPARED BY ME, OR UNDER MY DIRECT SUPERVISION, THAT THE FIELD WORK WAS COMPLETED ON 9/03/2010, THAT IT IS NOT A LAND SURVEY PLAT OR AN IMPROVEMENT SURVEY PLAT, AND THAT IT IS NOT TO BE RELIED UPON FOR ESTABLISHMENT OF FENCE, BUILDING, OR OTHER FUTURE IMPROVEMENT LINES.

Scale 1" = 1000 ft

## NOTES:

- 1) LAT/LONG SHOWN ARE BASED ON A GPS OBSERVATION (NAD83).
- 2) BEARINGS SHOWN ARE GRID BEARINGS OF THE COLORADO STATE PLANE COORDINATE SYSTEM, NORTH ZONE, NORTH AMERICAN DATUM 1983/2007.
- 3) GROUND ELEVATIONS ARE BASED ON A GPS OBSERVATION (NAVD 83 DATUM).
- 4) ALL DISTANCES SHOWN ARE FIELD MEASURED UNLESS OTHERWISE NOTED.
- 5) THE NEAREST EXISTING WELL IS: MEGAN H16-33 40' NORTH.
- 6) IMPROVEMENTS: SEE VISIBLE IMPROVEMENTS EXHIBIT FOR ALL VISIBLE IMPROVEMENTS WITHIN 600' OF WELL HEAD.
- 7) SURFACE USE: OPEN RANGE.

SURFACE HOLE:  
LATITUDE: 40.221572° N  
LONGITUDE: 104.677201° W  
PDOP: 2.5  
1/4, 1/4: SW1/4SW1/4  
NEAREST PROPERTY LINE: 155' WEST

BOTTOM HOLE:  
LATITUDE: 40.220505° N  
LONGITUDE: 104.661157° W

## LEGEND

- - FOUND/SET SURVEY MONUMENT PER MONUMENT RECORD EXCEPTIONS NOTED.
- - CALCULATED SURVEY MONUMENT POSITION
- (C) - CALCULATED DIMENSION

NOTICE: According to Colorado law you MUST commence any legal action based upon any defect in this WLC within three years after you first discover such defect. In no event may any action based upon any defect in this WLC be commenced more than ten years from this date of the certification shown hereon.



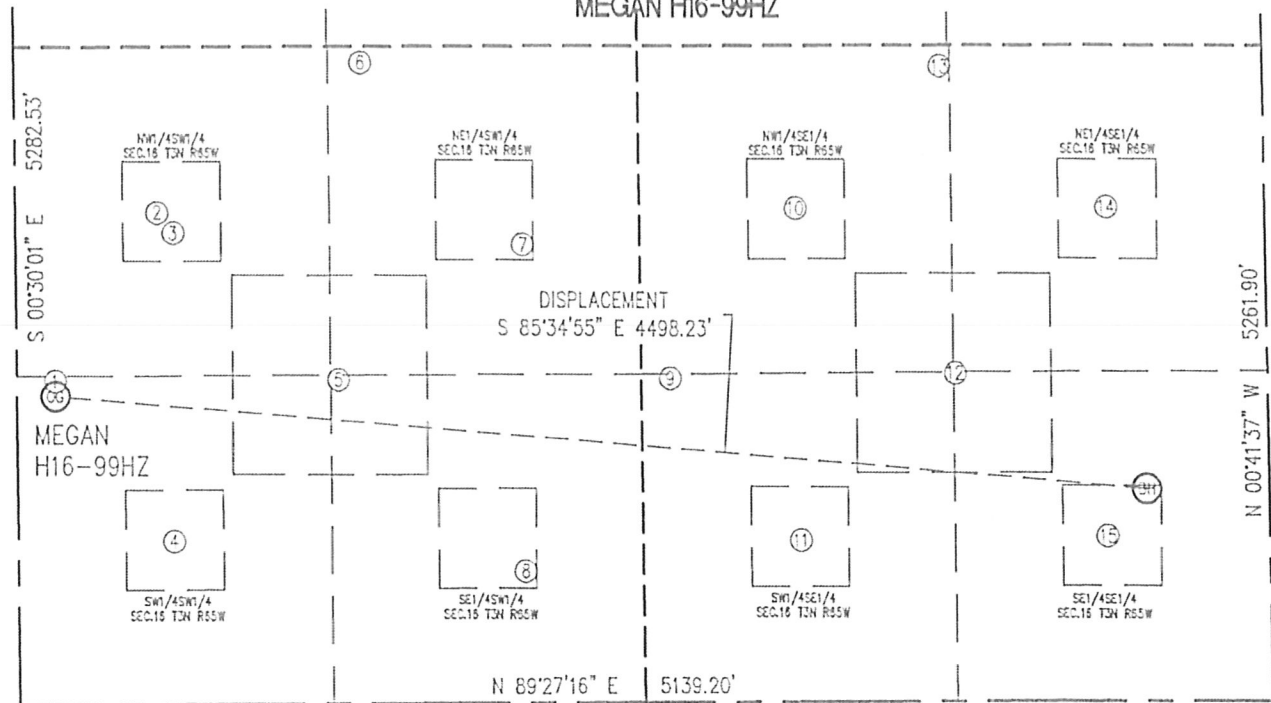
John C. Barickman  
Professional Land Surveyor Registration No. 28258  
State of Colorado  
FOR AND ON BEHALF OF BASELINE ENGINEERING CORP.

Completed  
9/07/2010

JOB # NCR3N65W16-01

# SITE SKETCH

## MEGAN H16-99HZ

SECTION 16  
TOWNSHIP 3 NORTH  
RANGE 65 WEST

- |  |  |   |  |   |
|--|--|---|--|---|
| ①<br>MEGAN H16-33<br>SW1/4SW1/4<br>155' FWL<br>1280' FSL<br>EL=4856'<br>LAT: 40.221681° N<br>LONG: 104.677201° W<br>PDOP: 2.1  | ②<br>MEGAN H16-12J<br>NW1/4SW1/4<br>582' FWL<br>1975' FSL<br>EL=4853'<br>LAT: 40.223591° N<br>LONG: 104.675671° W<br>PDOP: 1.8 | ③<br>MEGAN H 16-12<br>NW1/4SW1/4<br>646' FWL<br>1894' FSL<br>EL=4853'<br>LAT: 40.223369° N<br>LONG: 104.645441° W<br>PDOP: 2.1  | ④<br>MEGAN H16-13<br>SW1/4SW1/4<br>639' FWL<br>654' FSL<br>EL=4851'<br>LAT: 40.219964° N<br>LONG: 104.675468° W<br>PDOP: 1.6   | ⑤<br>STATE 2<br>SE1/4SW1/4<br>1317' FWL<br>1300' FSL<br>EL=4845'<br>LAT: 40.221739° N<br>LONG: 104.673039° W<br>PDOP: 2.0       |
| ⑥<br>MEGAN H16-20<br>NE1/4SW1/4<br>1420' FWL<br>2576' FSL<br>EL=4849'<br>LAT: 40.225238° N<br>LONG: 104.672668° W<br>PDOP: 1.6 | ⑦<br>MEGAN H16-11<br>NE1/4SW1/4<br>2082' FWL<br>1840' FSL<br>EL=4846'<br>LAT: 40.223220° N<br>LONG: 104.670300° W<br>PDOP: 1.6 | ⑧<br>MEGAN H 16-14<br>SE1/4SW1/4<br>2082' FWL<br>528' FDL<br>EL=4836'<br>LAT: 40.219621° N<br>LONG: 104.670304° W<br>PDOP: 1.8  | ⑨<br>MEGAN H16-24<br>SW1/4SE1/4<br>2450' FEL<br>1300' FSL<br>EL=4837'<br>LAT: 40.221740° N<br>LONG: 104.668141° W<br>PDOP: 2.0 | ⑩<br>MEGAN H 16-10<br>NW1/4SE1/4<br>1925' FEL<br>1982' FSL<br>EL=4824'<br>LAT: 40.223611° N<br>LONG: 104.666271° W<br>PDOP: 2.1 |
| ⑪<br>MEGAN H16-15<br>SW1/4SE1/4<br>1923' FEL<br>649' FSL<br>EL=4833'<br>LAT: 40.219953° N<br>LONG: 104.666250° W<br>PDOP: 2.1  | ⑫<br>MEGAN H16-4J<br>SE1/4SE1/4<br>1275' FEL<br>1318' FSL<br>EL=4822'<br>LAT: 40.221788° N<br>LONG: 104.663934° W<br>PDOP: 2.5 | ⑬<br>MEGAN H 16-22<br>NW1/4SE1/4<br>1319' FEL<br>2552' FSL<br>EL=4819'<br>LAT: 40.225174° N<br>LONG: 104.664105° W<br>PDOP: 2.6 | ⑭<br>MEGAN H16-9<br>NE1/4SE1/4<br>646' FEL<br>1983' FSL<br>EL=4818'<br>LAT: 40.223614° N<br>LONG: 104.661792° W<br>PDOP: 1.6   | ⑮<br>MEGAN H 16-16<br>SE1/4SE1/4<br>661' FEL<br>660' FSL<br>EL=4815'<br>LAT: 40.219983° N<br>LONG: 104.661733° W<br>PDOP: 1.6   |

## NOTES:

- THIS SKETCH DOES NOT REPRESENT A BOUNDARY SURVEY.
- THE DATUM FOR THE LATITUDES AND LONGITUDES ON THIS SKETCH IS NAD83.

0 750  
Scale 1" = 750 ft

