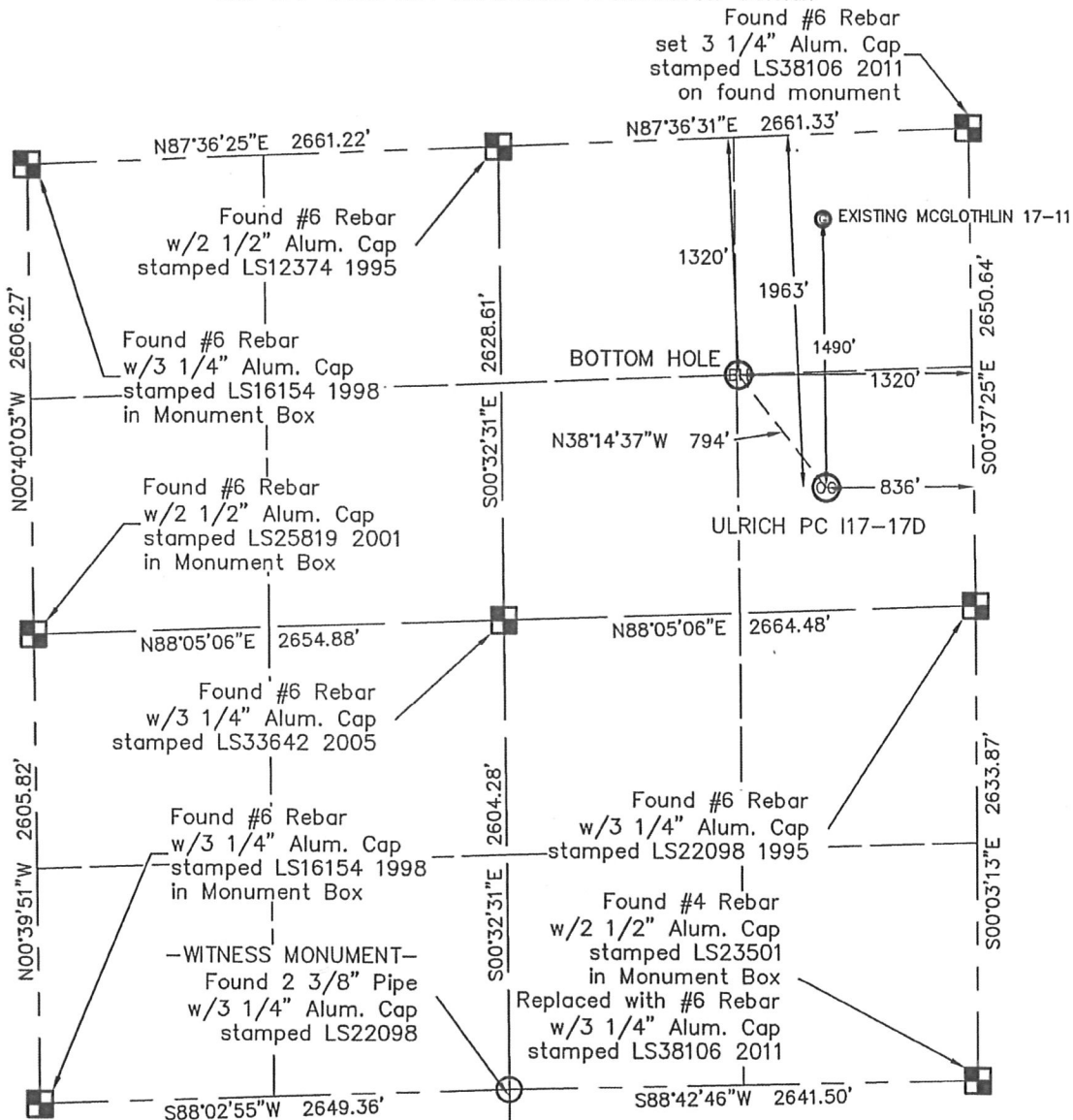


KING SURVEYORS, INC. 650 E. GARDEN DR. WINDSOR, CO 80550
WELL LOCATION CERTIFICATE
 ULRICH PC 117-17D

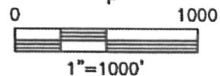
THIS MAP DOES NOT REPRESENT A BOUNDARY SURVEY

SECTION: 17
 TOWNSHIP: 6N
 RANGE: 66W



In accordance with a request from RYAN ANTONIO with NOBLE ENERGY INC. King Surveyors Inc. has determined the surface location of the ULRICH PC 117-17D to be 1963' from the NORTH line and 836' from the EAST line, and the bottom hole to be 1320' from the NORTH line and 1320' from the EAST line, as measured at right angles, from the section lines of Section 17, Township 6 North, Range 66 West of the Sixth Principal Meridian, County of Weld, State of Colorado.

I hereby state that this Well Location Certificate was prepared by me, or under my direct supervision, that the fieldwork was completed on 2-16-2011, for and on behalf of NOBLE ENERGY INC. That this is not a Land Survey Plat or an Improvement Survey Plat, and that it is not to be relied upon for establishment of fence, building, or other future improvement lines.



NOTE:

- 1) Bearings shown are Grid Bearings of the Colorado State Plane Coordinate System, North Zone, North American Datum 1983/2007. The lineal dimensions as contained herein are based upon the "U.S. Survey Foot."
- 2) Ground elevations are based on an observed GPS elevation (NAVD 1988 DATUM).
- 3) NEAREST EXISTING WELL: MCGLOTHLIN 17-11 1490' NORTH
- 4) IMPROVEMENTS: See LOCATION DRAWING for all visible improvements within 400' of disturbed area.
- 5) SURFACE USE: CROP FIELD
- 6) FIELD OPERATOR: RON EDWARDS

NOTE

According to Colorado law, you must commence any legal action based upon any defect in this W.L.C. within three years after you discover such defect. In no event, may any action based upon any defect in this survey be commenced more than ten years after the date of the certificate shown hereon. (13-80-105 C.R.S.)

LEGEND

- = FOUND ALIQUOT MONUMENT AS DESCRIBED
- = CALCULATED POSITION
- = SET ALIQUOT MONUMENT AS DESCRIBED

SURFACE LOCATION
 LATITUDE: 40.48994°N
 LONGITUDE: 104.79539°W
 PDOP: 0.9
 ELEV: 4782'
 1/4, 1/4: SE 1/4 NE 1/4
 NEAREST PROPERTY LINE: 679' SOUTH

BOTTOM HOLE
 LATITUDE: 40.49166°N
 LONGITUDE: 104.79714°W

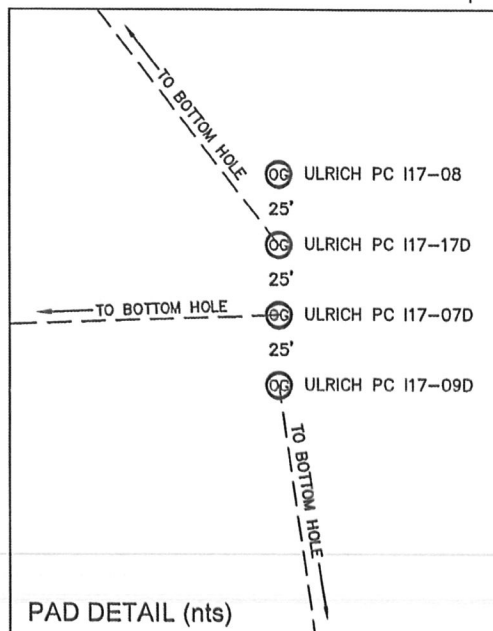
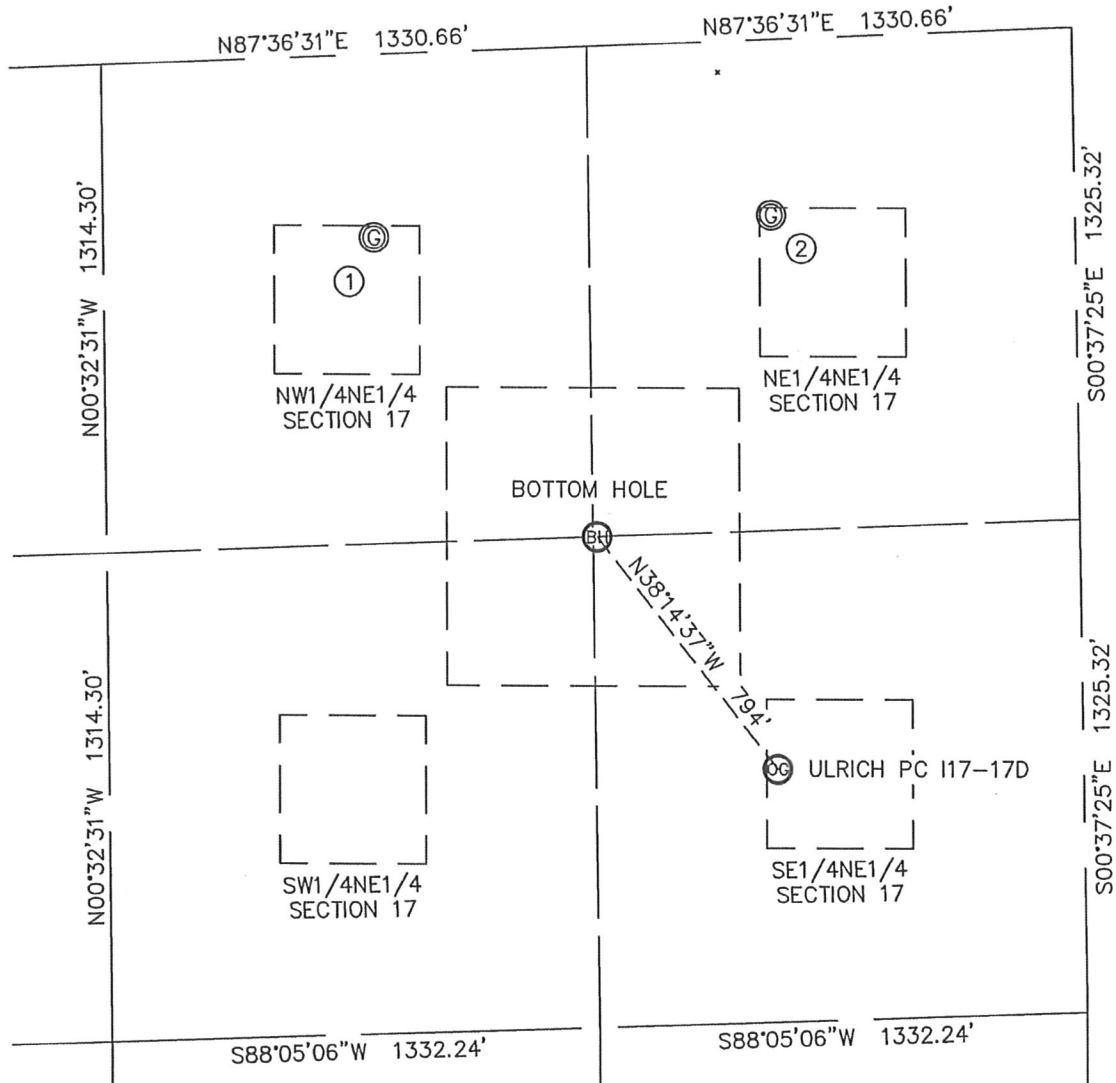
Michael Chad Dilke 2/21/2011
 Michael Chad Dilke On Behalf Of King Surveyors, Inc.
 Colorado Licensed Professional Land Surveyor #38106
 PROJECT#: 2010462

KING SURVEYORS, INC. 650 E. GARDEN DR. WINDSOR, CO 80550

SITE SKETCH

ULRICH PC I17-17D

SECTION: 17
TOWNSHIP: 6N
RANGE: 66W



①
McGLOTHLIN 17-12
NW1/4 NE1/4
493' FNL
1918' FEL
LAT-40.49388°N
LONG-104.79930°W
PDOP: 2.2
ELEV: 4793'

②
McGLOTHLIN 17-11
NE1/4 NE1/4
474' FNL
832' FEL
LAT-40.49403°N
LONG-104.79539°W
PDOP: 2.7
ELEV: 4792'

0 500
1"=500'

PROJECT#: 2010462