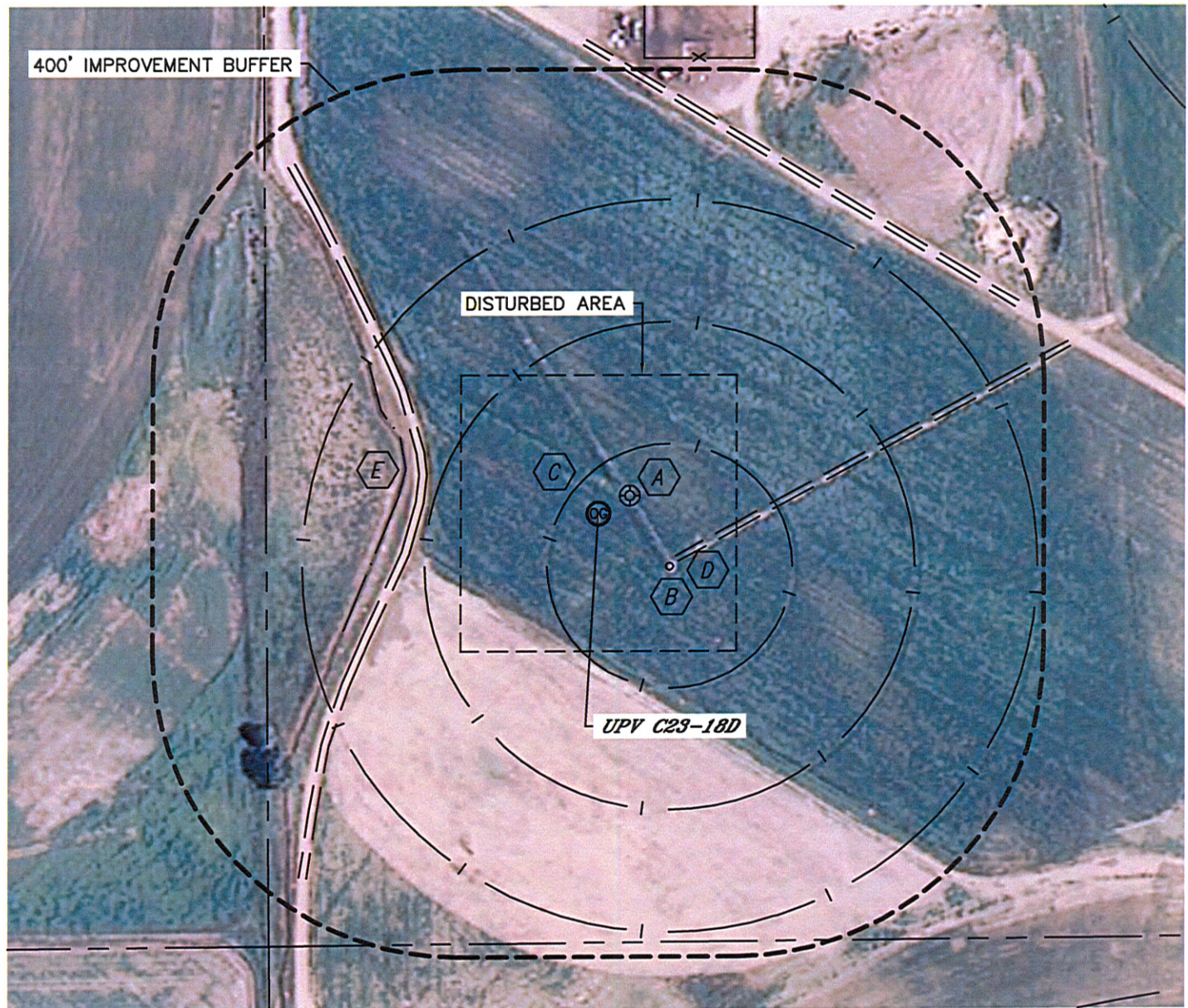


Lat40°, LLC 1635 Foxtrail Drive, Suite 325 Loveland, CO 80538

LOCATION DRAWING

UPV C23-18D

SECTION: 23
TOWNSHIP: 4N
RANGE: 64W



IMPROVEMENTS:

- A UPV 23-714 47' NE
- B IRRIGATION PIVOT 116' SE
- C IRRIGATION PIVOT TRACK 44' W, 204' W, 364' W
- D FIELD ROAD 115' SE, 228' W, 510' NE
- E DITCH 258' W

NEAREST: BUILDING 750' N, PUBLIC ROAD 2090' N,
ABOVE GROUND UTILITY 1290' N, RAILROAD 5280'+, PROPERTY LINE 433' W