



Copyright © 2003 by Epoch Well Services, Inc.

Houston, TX
(281) 784-5500
Bakersfield, CA
(661) 328-1595
New Iberia, LA
(337) 364-2322
Anchorage, AK
(907) 561-2465

MUDLOG MD

COMPANY	EXXONMOBIL
WELL	PCU_197-34A7
FIELD	PICEANCE CREEK
REGION	ROCKY MOUNTAIN
COORDINATES	LAT: 39.917998000 LONG: 108.277020000
ELEVATION	G.L.:6487.3' RKB: 30.2'
COUNTY, STATE	RIO BLANCO, CO
API INDEX	051031153800
SPUD DATE	01/04/2010
CONTRACTOR	HELMRICH_PAYNE
CO. REP.	JOSH LOVE
RIG/TYPE	325/FLEX 4S
LOGGING UNIT	MLU 48
GEOLOGISTS	MARK GROSS DONNA NEW
ADD. PERSONS	JENN SELL
CO. GEOLOGIST	MELISSA J. SAURBORN

LOG INTERVAL

DEPTHS:	3815'	TO	12652'
DATES:	05/02/2010	TO	09/25/2010
SCALE:	1" = 100'		

CASING DATA

10.75"	AT	3808'
7"	AT	8585'
4"	AT	
	AT	

HOLE SIZE

14.75"	TO	3815'
9.875"	TO	8600'
6.125"	TO	12652'
	TO	

MUD TYPES

SPUD MUD	TO	3815'
LSND	TO	12652'
	TO	
	TO	

ABBREVIATIONS

<i>NB</i> NEWBIT	<i>PV</i> PLASTIC VISCOSITY	<i>LC</i> LOST CIRCULATION
<i>RRB</i> RERUN BIT	<i>YP</i> YIELD POINT	<i>CO</i> CIRCULATE OUT
<i>CB</i> CORE BIT	<i>FL</i> FLUID LOSS	<i>NR</i> NO RETURNS
<i>WOB</i> WEIGHT ON BIT	<i>CL</i> PPM CLORIDE ION	<i>TG</i> TRIP GAS
<i>RPM</i> ROTARY REV/MIN	<i>Rm</i> MUD RESISTIVITY	<i>SG</i> SURVEY GAS
<i>PP</i> PUMP PRESSURE	<i>Rmf</i> FILTRATE RESISTIVITY	<i>WG</i> WIPER GAS
<i>SPM</i> STROKES/MIN	<i>PR</i> POOR RETURNS	<i>CG</i> CONNECTION GAS
<i>MW</i> MUD WEIGHT	<i>LAT</i> LOGGED AFTER TRIP	
<i>VIS</i> FUNNEL VISCOSITY	<i>LAS</i> LOGGED AFTER SURVEY	

	ALTERED ZONE		CHERT - GLASSY		FELSIC SILIC DIKE		MARL - CALC		SANDSTONE
	ANDESITE		CHERT - PORCEL		FOSSIL		METAMORPHICS		SANDSTONE-TUFFACEOUS
	ANHYDRITE		CHERT - TIGER STRIPE		GABBRO		MUDSTONE		SERICITIZATION
	BASALT		CHERT - UNDIFF		GLASSY TUFF		OBSIDIAN		SERPENTINE
	BENTONITE		CLAY		GRANITE		PALEOSOL		SHALE
	BIOTITIZATION		CLAY-MUDSTONE		GRANITE WASH		PHOSPHATE		SHALE TUFFACEOUS
	BRECCIA		CLYST-TUFFACEOUS		GRANODIORITE		PORCELANITE		SHELL FRAGMENTS
	CALCARENITE		CHLORITIZATION		GYPSUM		PORCELANEOUS CLYST		SIDERITE
	CALCAREOUS TUFF		COAL		HALITE		PYRITE		SILICIFICATION
	CALCILUTITE		CONGLOMERATE		HORNBL-QTZ-DIO		PYROCLASTICS		SILTSTONE
	CARBONATES		CONGL. SAND		IGNEOUS (ACIDIC)		QUARTZ DIORITE		SILTST-TUFFACEOUS
	CARBONACEOUS MAT		CONGL. SANDSTONE		IGNEOUS (BASIC)		QUARTZ LATITE		TUFF
	CARBONACEOUS SH		COQUINA		INTRUSIVES		QUARTZ MONZONITE		VOLCANICLASTICS SEDS
	CEMENT CONTAM.		DACITE		KAOLINITIC		RECRYSTALLIZED CALCITE		VOLCANICS
	CHALK		DIATOMITE		LIMESTONE		RHYOLITE		
	CRYSTALLINE TUFF		DIORITE		LITHIC TUFF		SALT		
	CHERT - ARGILL		DOLOSTONE		MARL - DOLO		SAND		

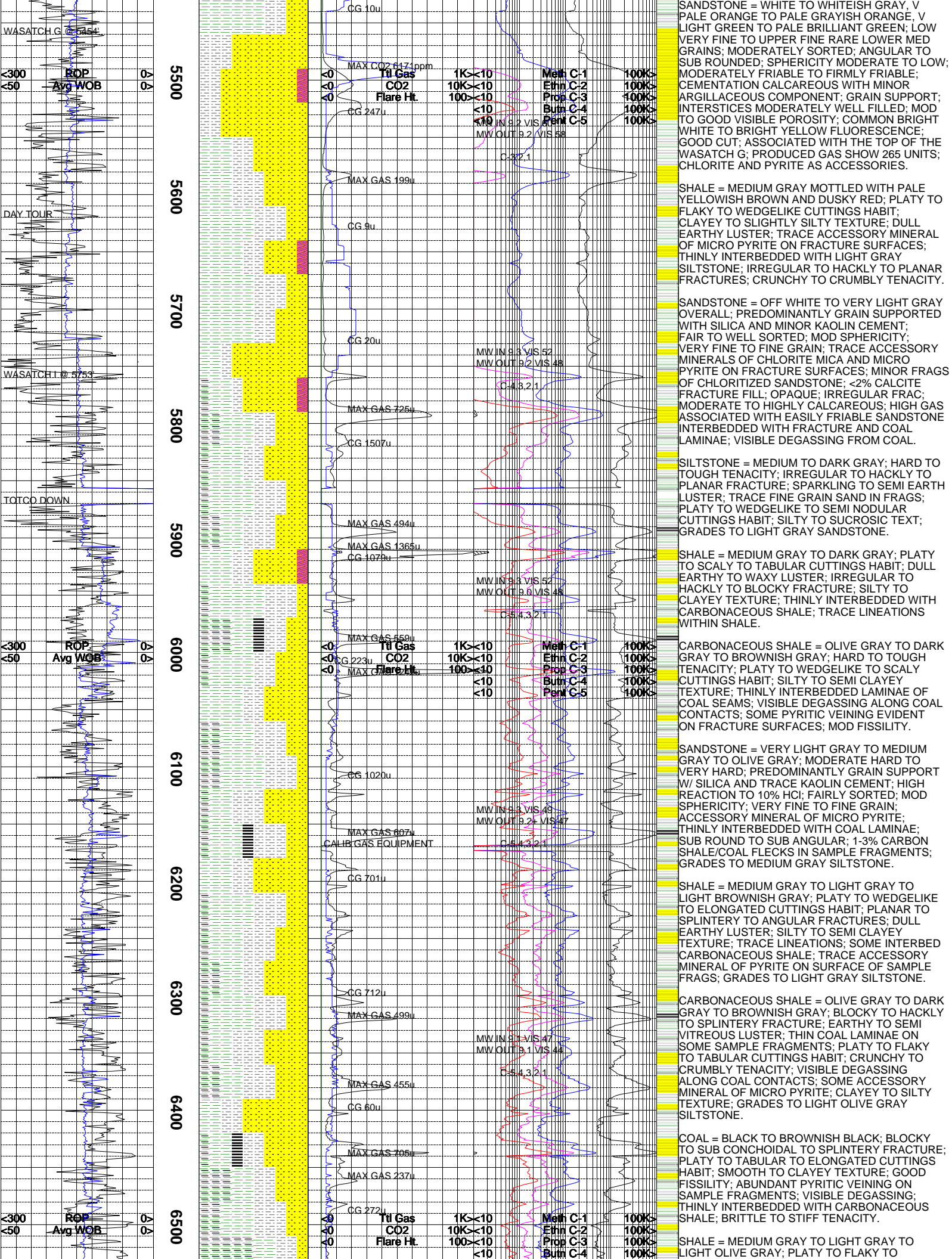
EXXONMOBIL			PCU_197-34A7			9/29/2010		

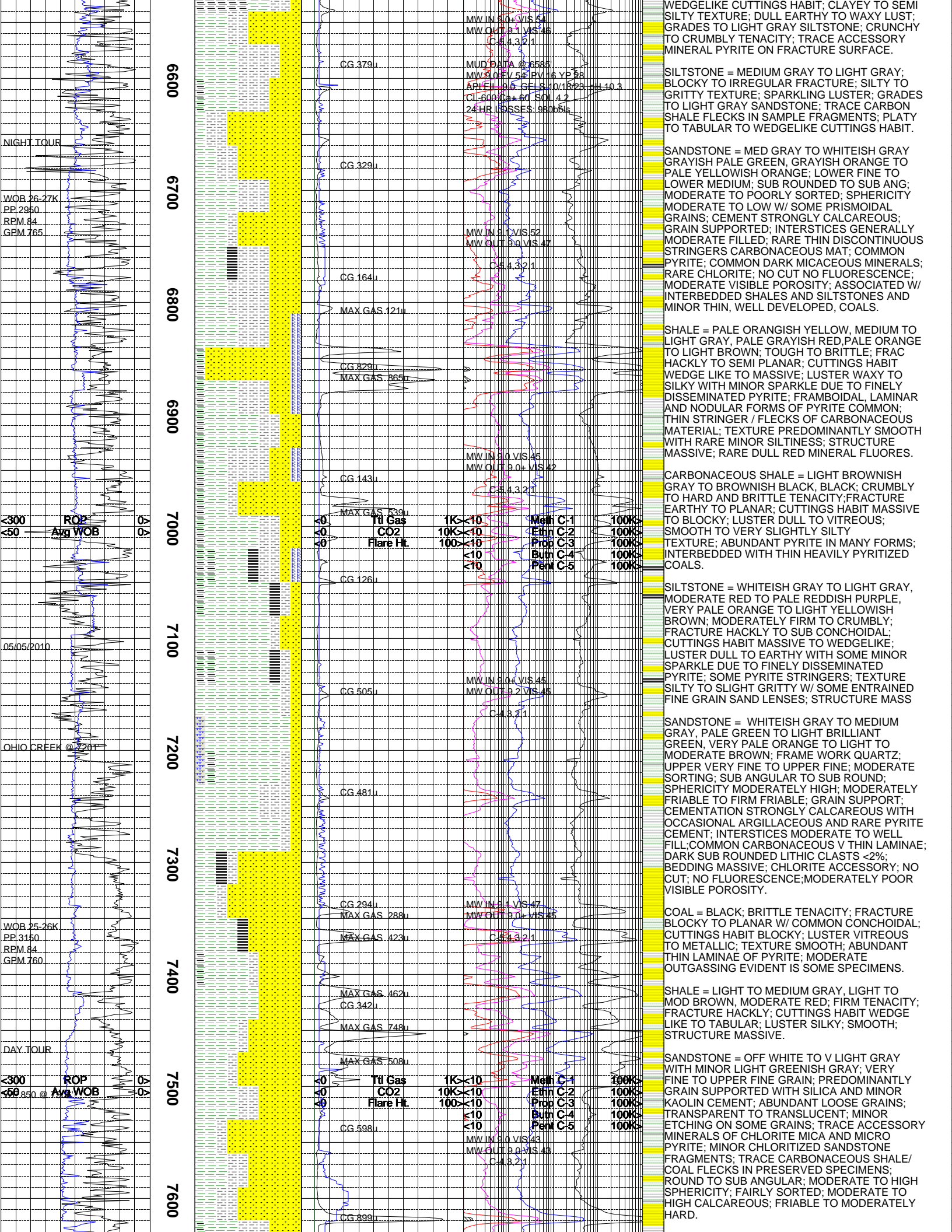
WOB 22.24K
PP 2710
RPM 108
GPM 728

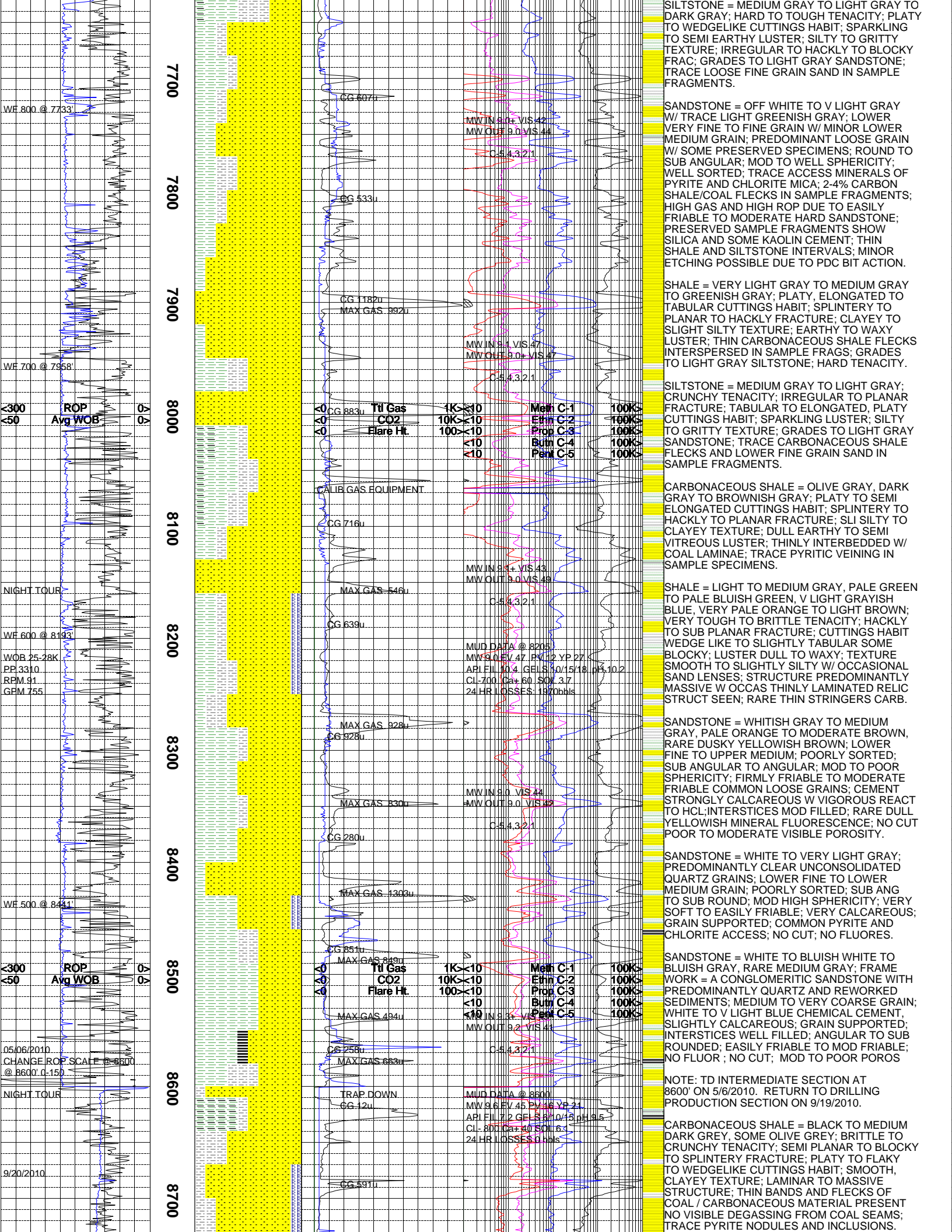
5400

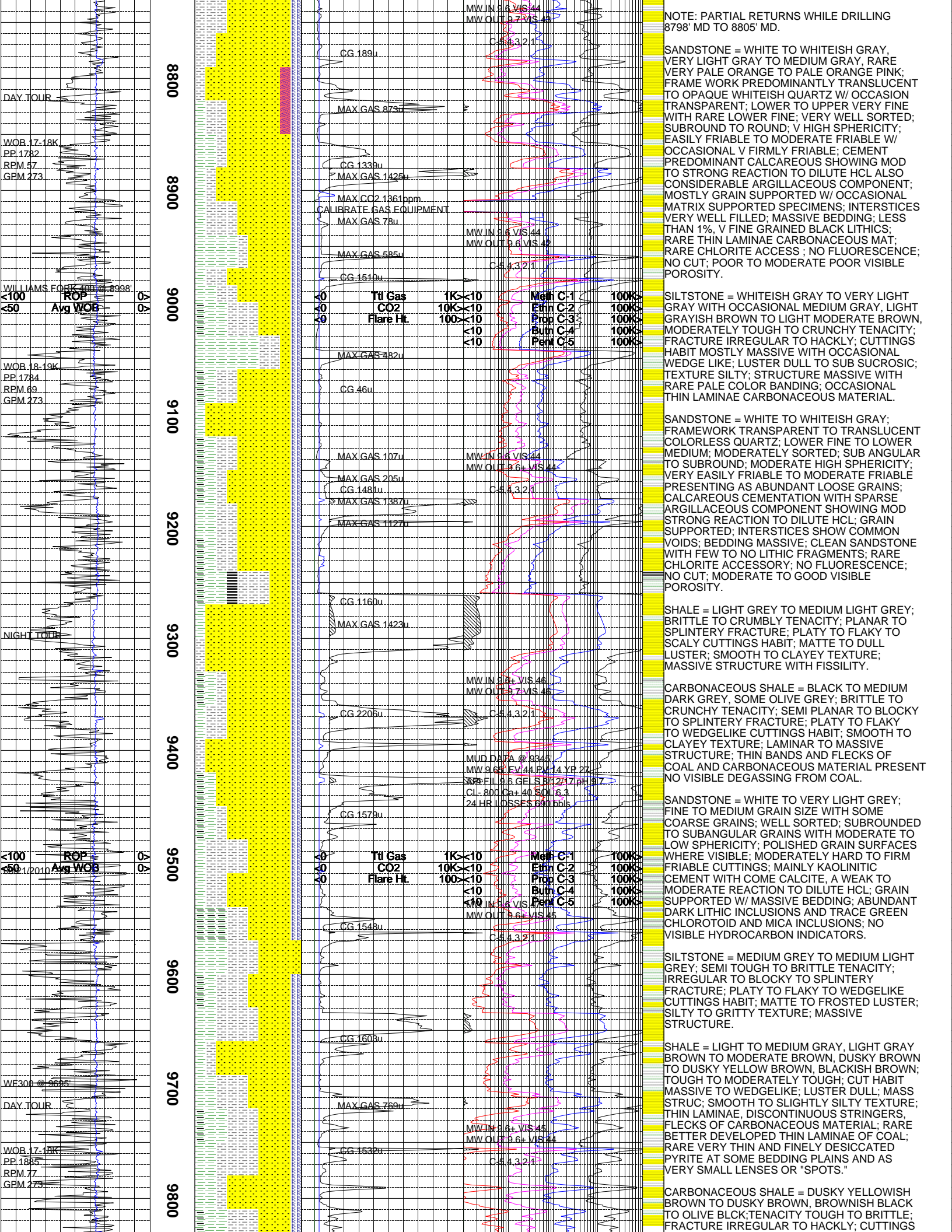
MVV 001 9.2 V \$ 57

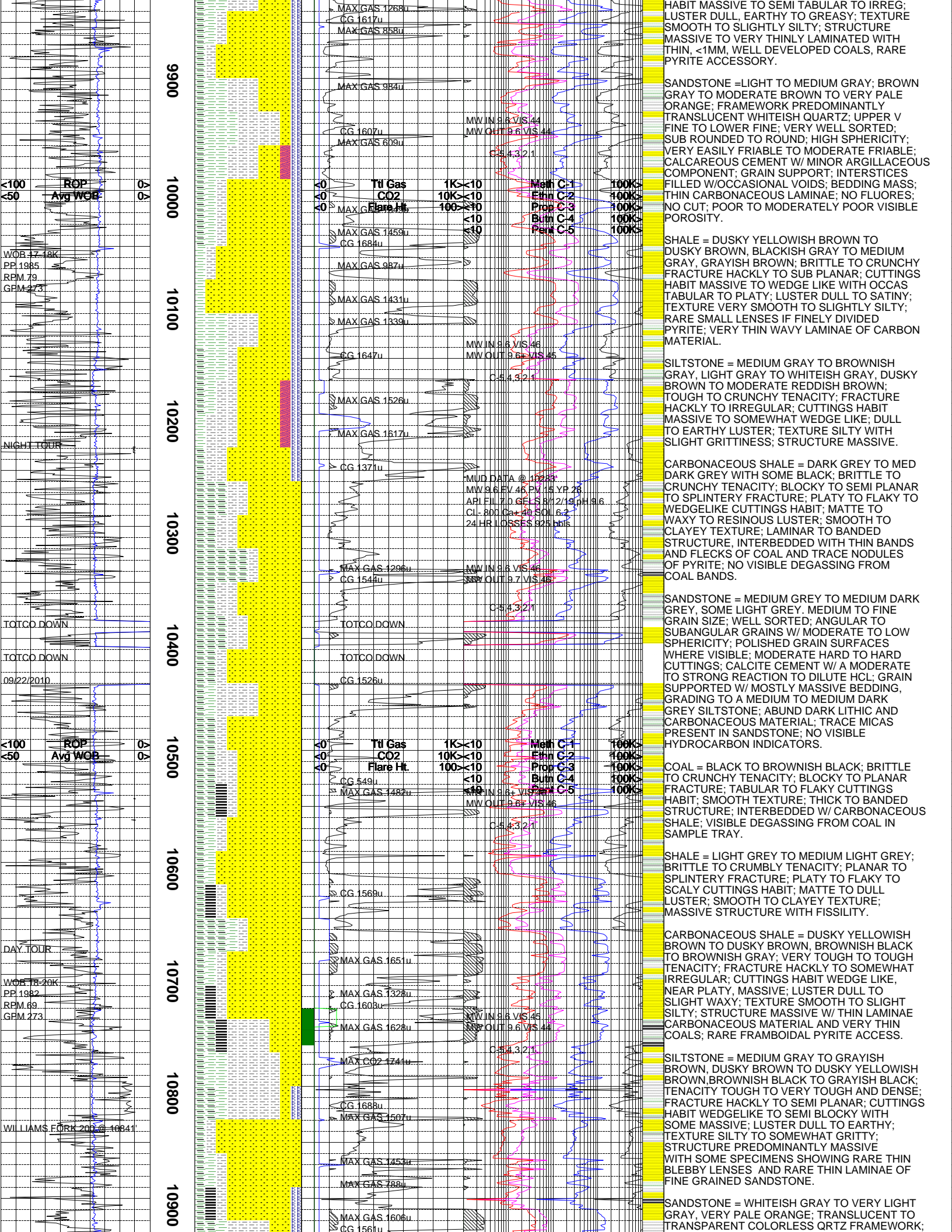
CARBONACEOUS SHALE = REDDISH BROWN TO BROWNISH BLACK; CRUNCHY TO CRUMBLY; FRACTURE IRREGULAR TO EARTHY; CUTTINGS HABIT MASSIVE TO SUB TABULAR; DULL TO RESINOUS; LAMINAR STRUCTURE; FISSILE THINLY INTERBEDDED WITH LIGHT TO MEDIUM GRAY SHALE; ABUNDANT PYRITE AS THIN LAMINAE, FLECKS, AND THICK LENSES; OCCAS THIN LAMINAE OF CLEAR CALCITE PARALLEL TO BEDDING PLANES; COMMON PLANAR PARTING; FAIRLY STRONG OUTGASSING EVIDENT IN APPROX 25% OF SPECIMENS. ASSOCIATED WITH SHALES AND SILTSTONE; NAHCOLITE COMMON.

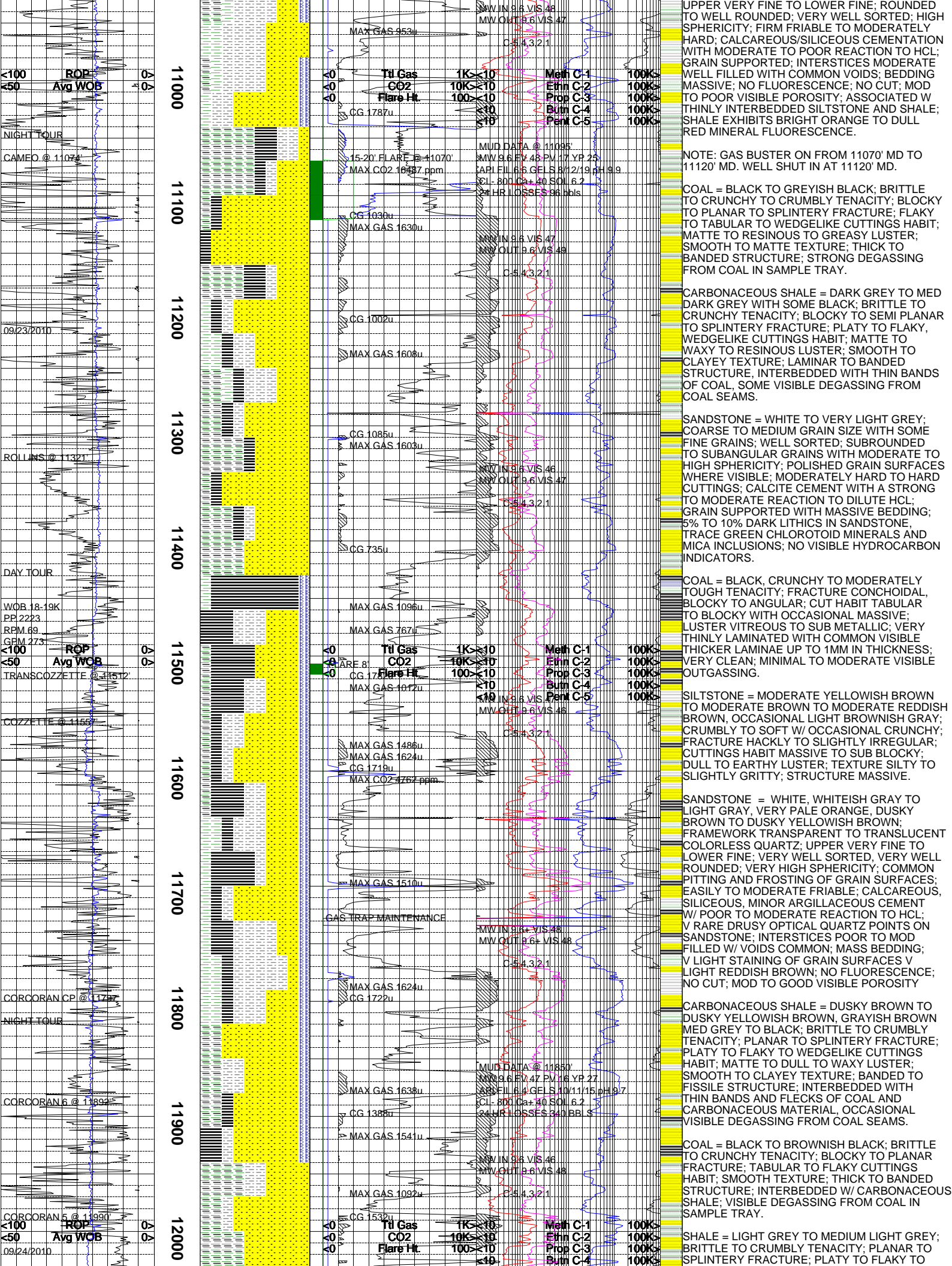


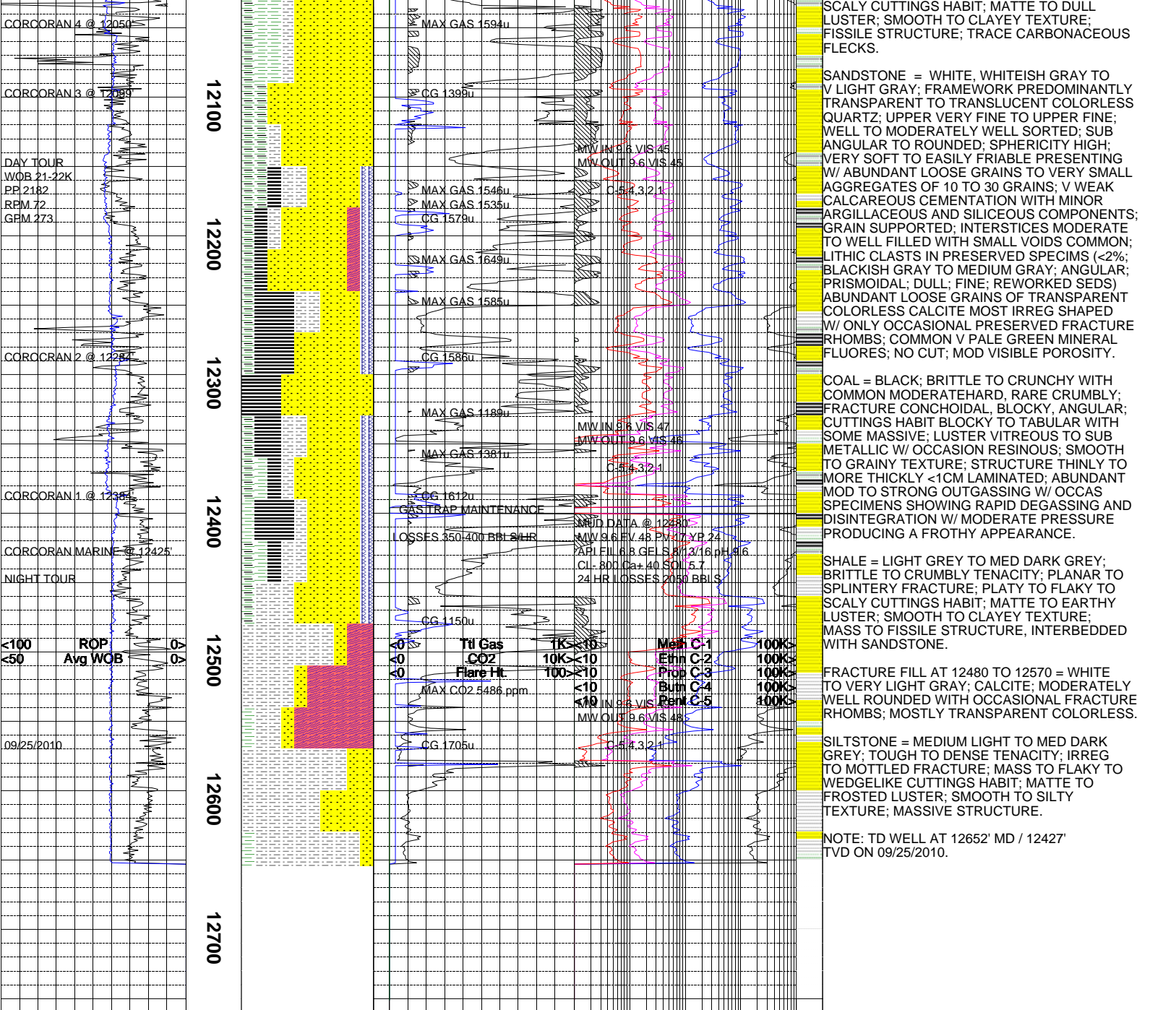












The log data, interpretations and recommendation provided by Epoch are inferences and assumptions based on measurements of drilling fluids. Such inferences and assumptions are not infallible and reasonable professionals may differ. Epoch does not represent or warrant the accuracy, correctness or completeness of any log data, interpretations, recommendations or information provided by Epoch, its officers, agents or employees. Epoch does not and cannot guarantee the accuracy of any such interpretation of the log data, interpretations or recommendations and Company is fully responsible for all decisions and actions it takes based on such log data, interpretations and recommendations.

