

Schlumberger

PERFORM - Drilling Mechanics

2 in / hr Time Based

Real Time Log

Company: ExxonMobil Oil Corporation

Well: Piceance Creek Unit 197 34 A9

Field: Piceance Creek

County: USA

State: Colorado

Country: USA

Section: 34 APIN: 051031153600

Township: 1S Rig Name: H&P 325

Range: 97W Rig Type: Flex 4

FL:

Latitude: N 39° 55' 5.183", Longitude W 108° 16' 35.058"

FL1: X = 1221353.00 ft, Y = 225202.00 ft

FL2: NAD 27 Colorado State Planes, Northern Zone, US Feet

Log Measured From - Drill Floor: 6518.0 ft

Ground Level: 6488.0 ft

Permanent Datum - Mean Sea Level

Other Services:

Directional Drilling

Acquisition Dates: 15 Mar 10

Print Interval: 3/15/2010 5:57:51 PM to 3/18/2010 11:03:29 PM

Index Types: Time

Index Scales: 2" / 3600 secs

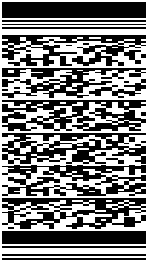
Depth Source: Driller's Depth

Depth Sensor: 3rd Party Depth

Conveyance: Drill Pipe

Print Type: Final

Spud Date: 15-Mar-2010



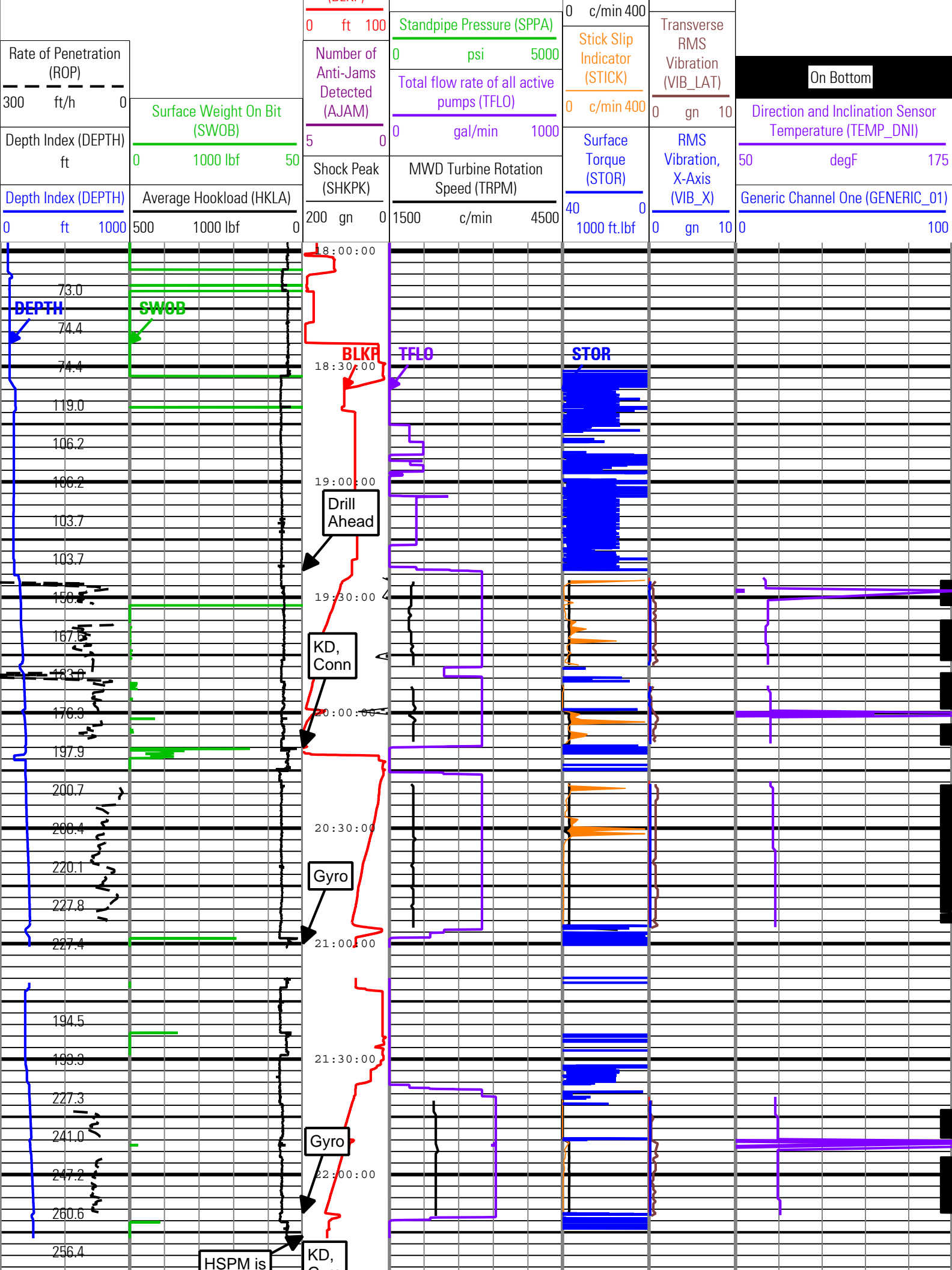
Disclaimer

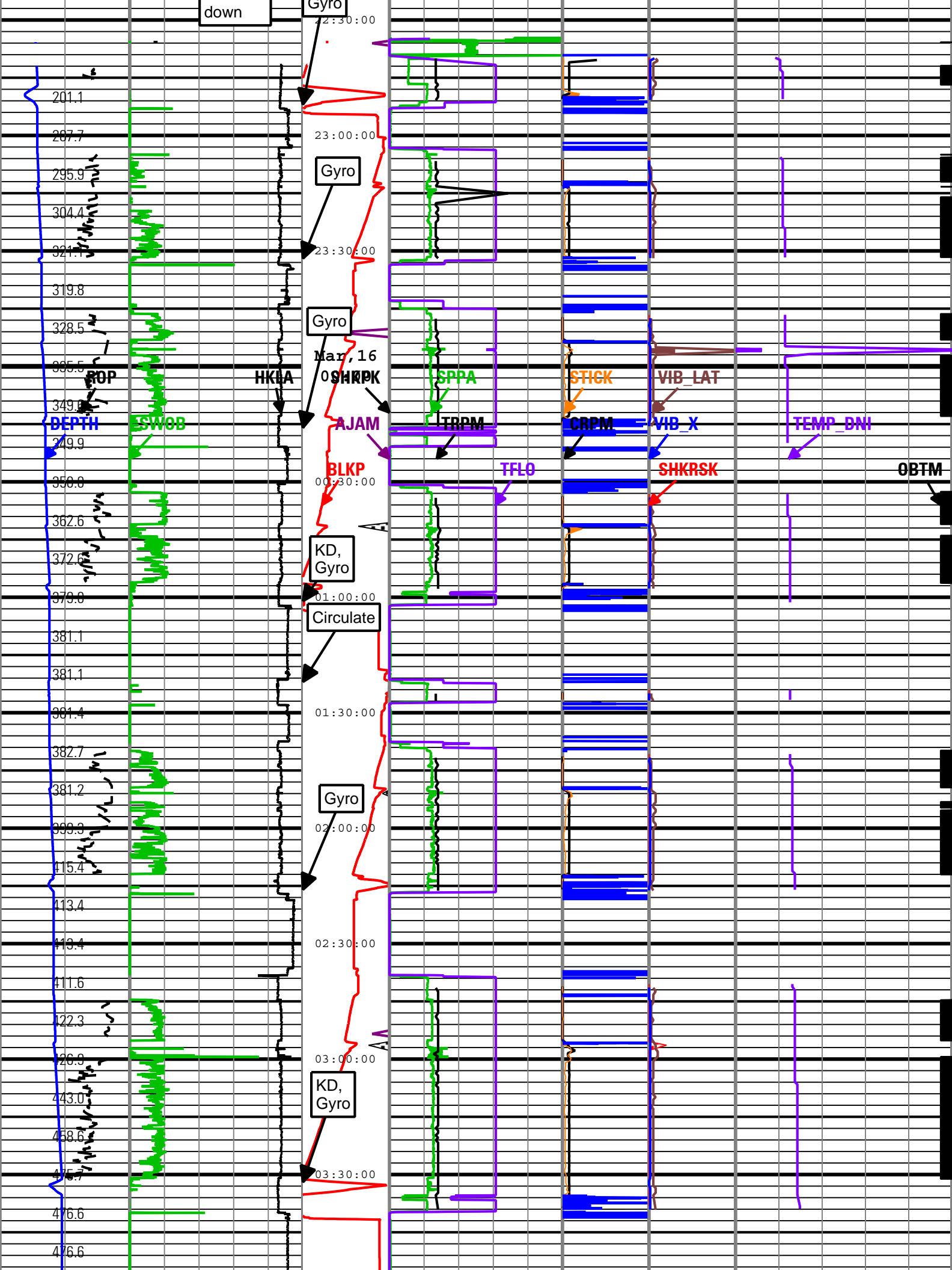
THE USE OF AND RELIANCE UPON THIS RECORDED-DATA BY THE HEREIN NAMED COMPANY (AND ANY OF ITS AFFILIATES, PARTNERS, REPRESENTATIVES, AGENTS, CONSULTANTS AND EMPLOYEES) IS SUBJECT TO THE TERMS AND CONDITIONS AGREED UPON BETWEEN SCHLUMBERGER AND THE COMPANY, INCLUDING: (a) RESTRICTIONS ON USE OF THE RECORDED-DATA; (b) DISCLAIMERS AND WAIVERS OF WARRANTIES AND REPRESENTATIONS REGARDING COMPANY'S USE AND RELIANCE UPON THE RECORDED-DATA; AND (c) CUSTOMER'S FULL AND SOLE RESPONSIBILITY FOR ANY INFERENCE DRAWN OR DECISION MADE IN CONNECTION WITH THE USE OF THIS RECORDED-DATA.

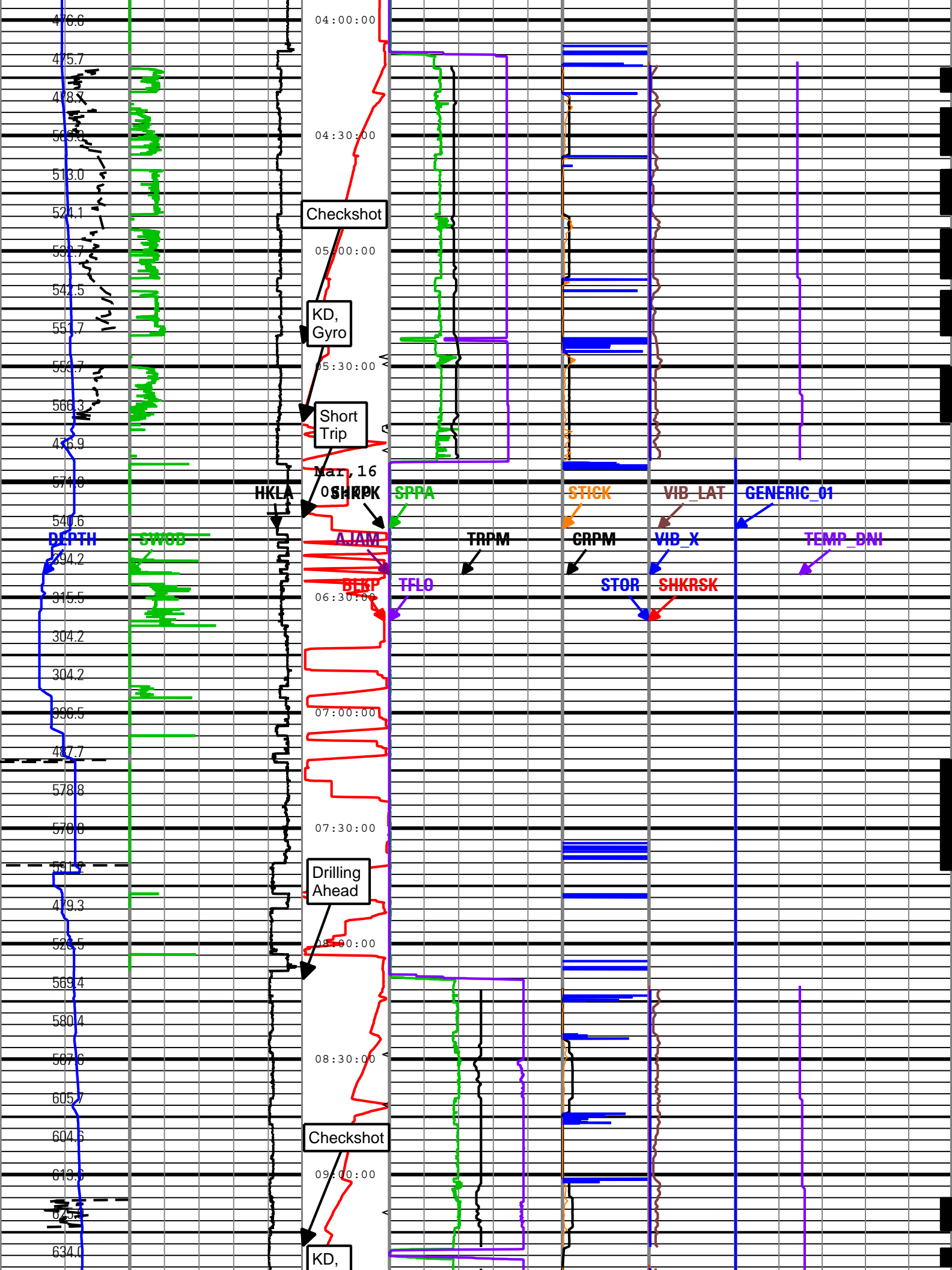
Contents

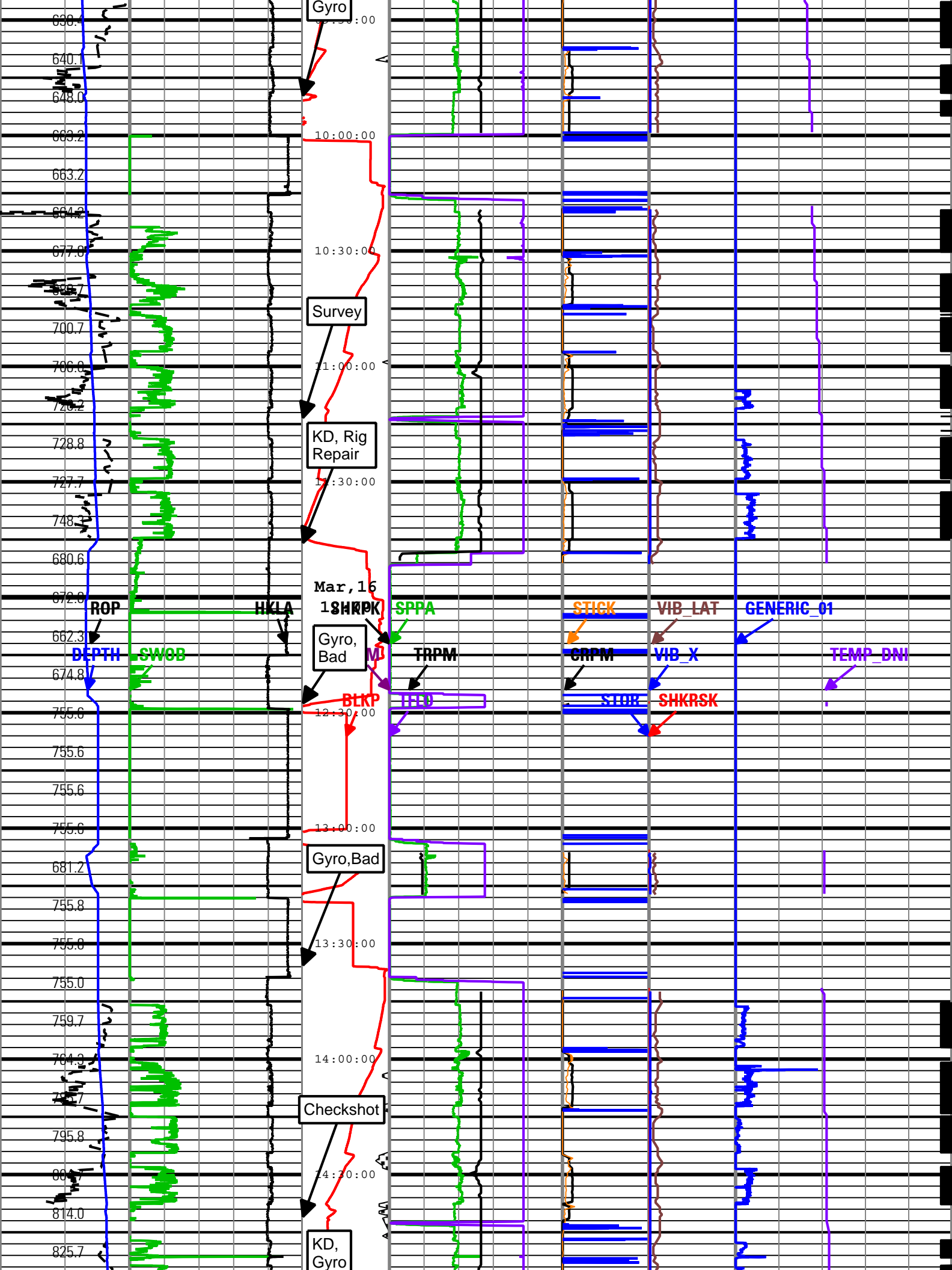
- 1. Header
- 2. Disclaimer
- 3. Contents
- 4. Run 1 PERFORM - Drilling Mechanics
 - 4.1 Software Version
 - 4.2 Pass Summary
 - 4.3 Log (PERFORM - Drilling Mechanics)
 - 4.4 Parameter Listing
- 5. Tail

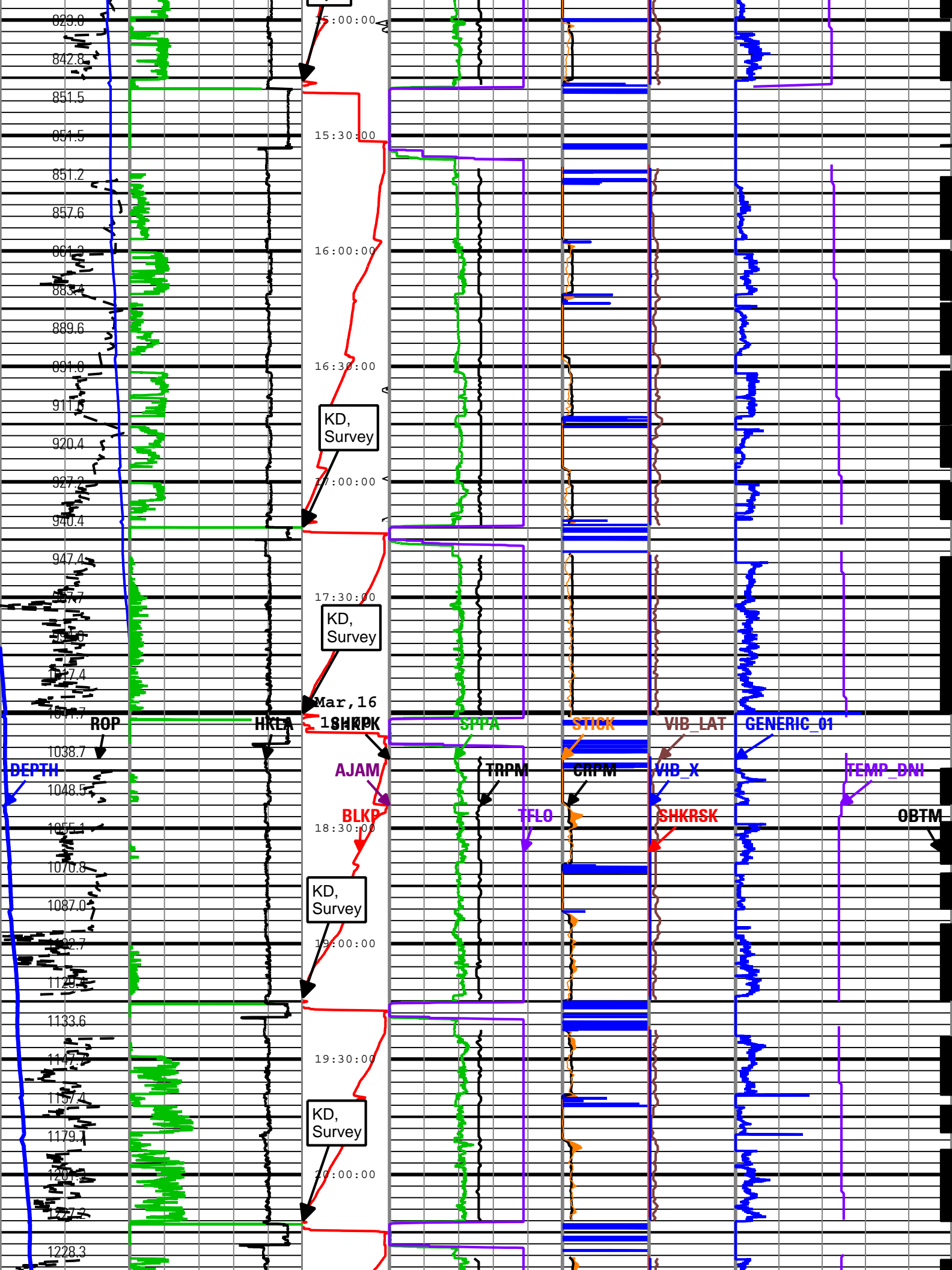
Run 1						
PERFORM - Drilling Mechanics						
Software Version						
Acquisition System				Version		
MaxWell				1.2.8706.0		
Framework Patch				FWK-BGC-20100105-1.2.8706.1067		
Application Patch				APL-SRPC-DnM-1.2.8706.1045		
Tool Elements		Description		Software Version		Firmware Version
DRILLING_SURFACE		DRILLING_SURFACE		1.2.8706.1067		
Pass Summary						
Run Name	Pass Objective	Direction	Start	Stop	Acquisition Start Date	Acquisition Start Time
Run 1	TimeLogicalAcq	Down	15-Mar-2010 17:57:45	18-Mar-2010 23:03:26	15-Mar-2010	17:57:45
Log	Run 1: TimeLogicalAcq B2F88A03-B891-4104-8966-22D56848EA09					
Description: TeleScope + ARC Drilling Mechanics Time RT Format: Log (PERFORM - Drilling Mechanics) Index Scale: 2 in per 3600 s Index Type: Time Creation Date: 19-Mar-2010 00:49:37						
AJAM	TELE825:TELE825	ACQ - RT				
BLKP	DRILLING_SURFACE	ACQ - RT				
CRPM	TELE825:TELE825	ACQ - RT				
DEPTH	DnMWorkflow	ACQ - RT				
GENERIC_01	DRILLING_SURFACE	ACQ - RT				
HKLA	DRILLING_SURFACE	ACQ - RT				
OBTM	DnMWorkflow	ACQ - RT				
ROP	DRILLING_SURFACE	ACQ - RT				
SHKPK	TELE825:TELE825	ACQ - RT				
SHKRSK	TELE825:TELE825	ACQ - RT				
SPPA	DRILLING_SURFACE	ACQ - RT				
STICK	TELE825:TELE825	ACQ - RT				
STOR	DRILLING_SURFACE	ACQ - RT				
SWOB	DRILLING_SURFACE	ACQ - RT				
TEMP_DNI	TELE825:TELE825	ACQ - RT				
TFLO	DRILLING_SURFACE	ACQ - RT				
TRPM	TELE825:TELE825	ACQ - RT				
VIB_LAT	TELE825:TELE825	ACQ - RT				
VIB_X	TELE825:TELE825	ACQ - RT				
<div>Shock Peak</div> <div>Height of block above rig floor (BJ KP)</div>			<div>High SticknSlip</div> <div>Collar Rotational Speed (CRPM)</div> <div>Shock Risk (SHKRSK)</div> <div>05</div>			

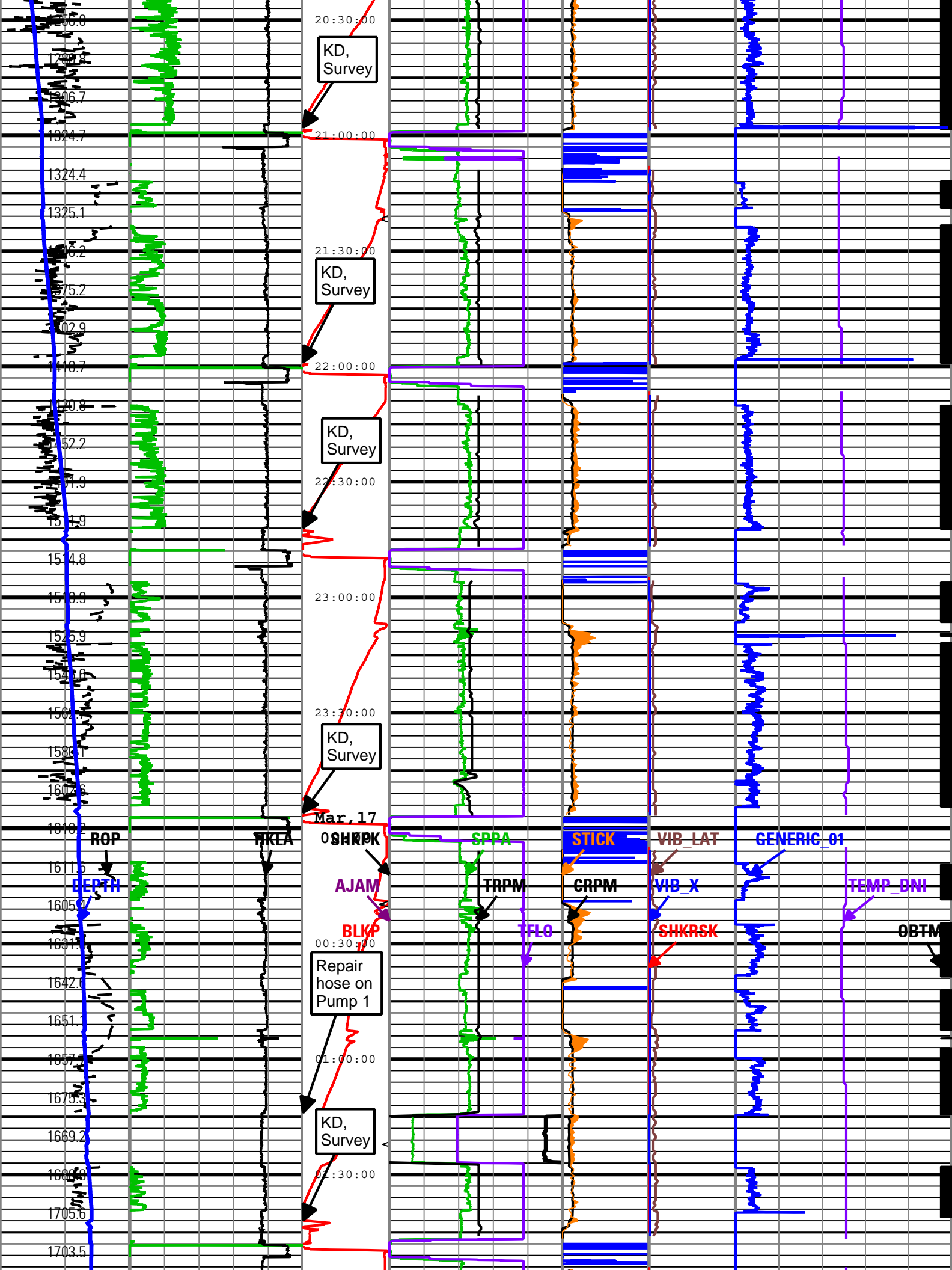


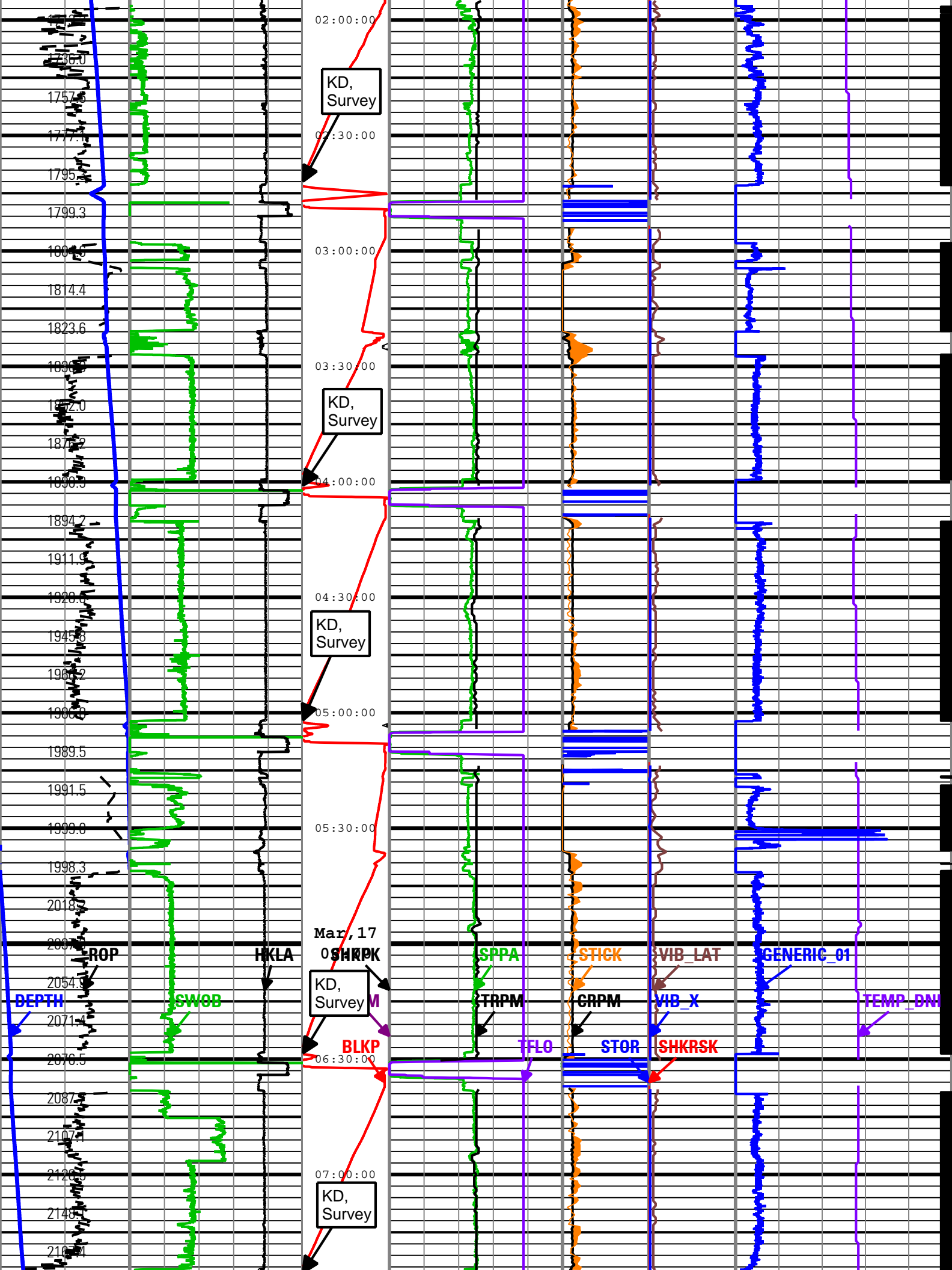


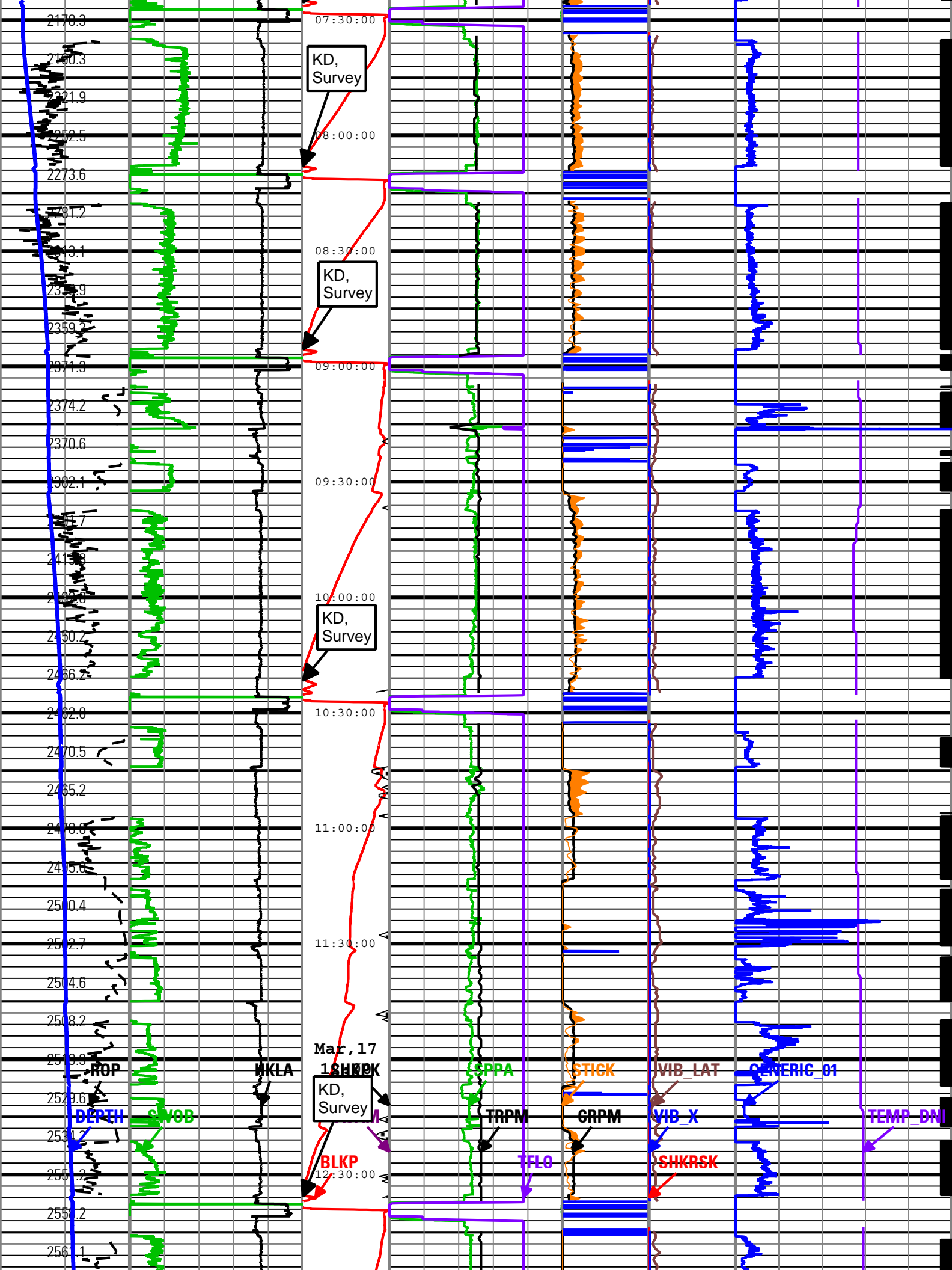


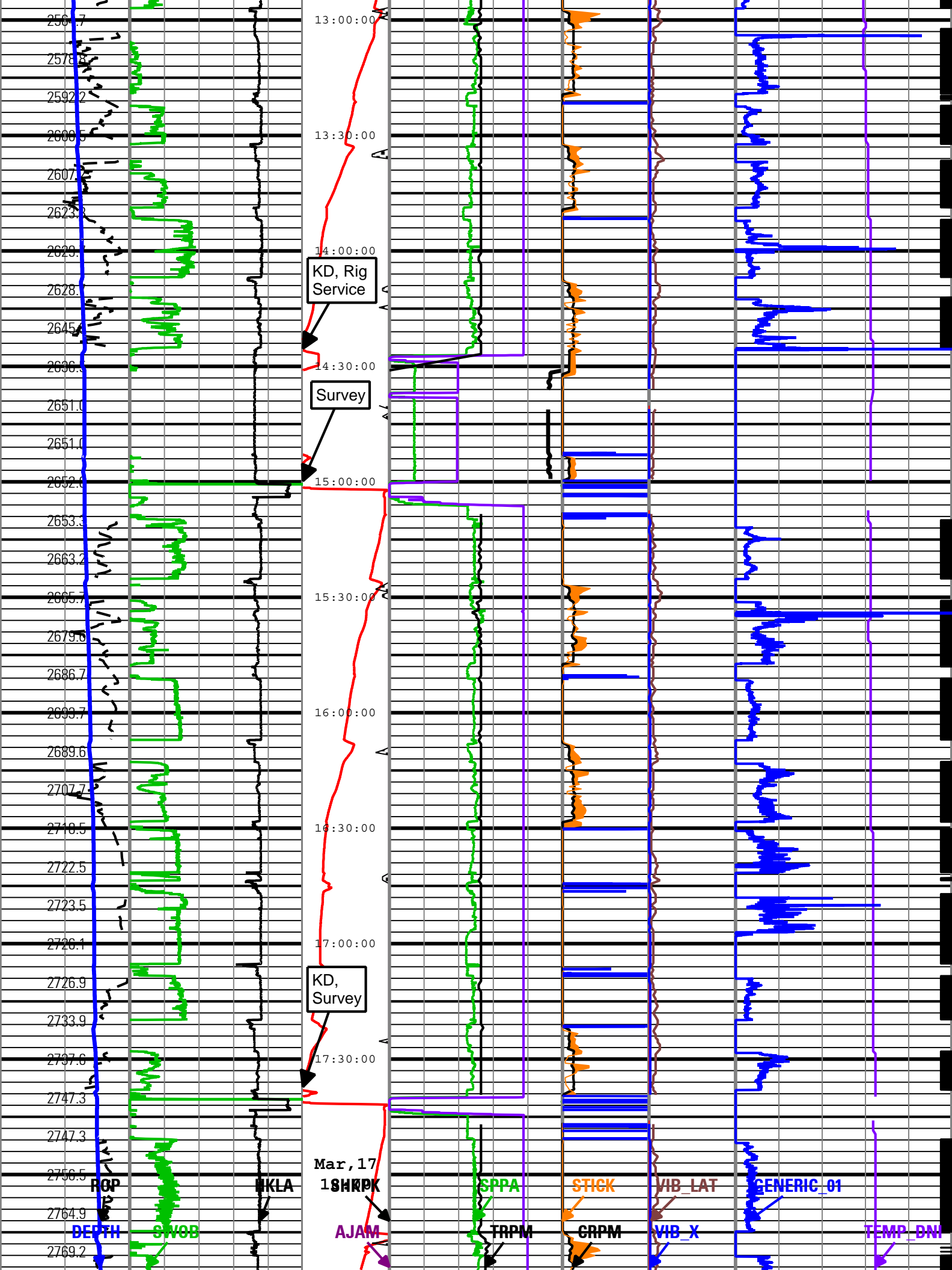


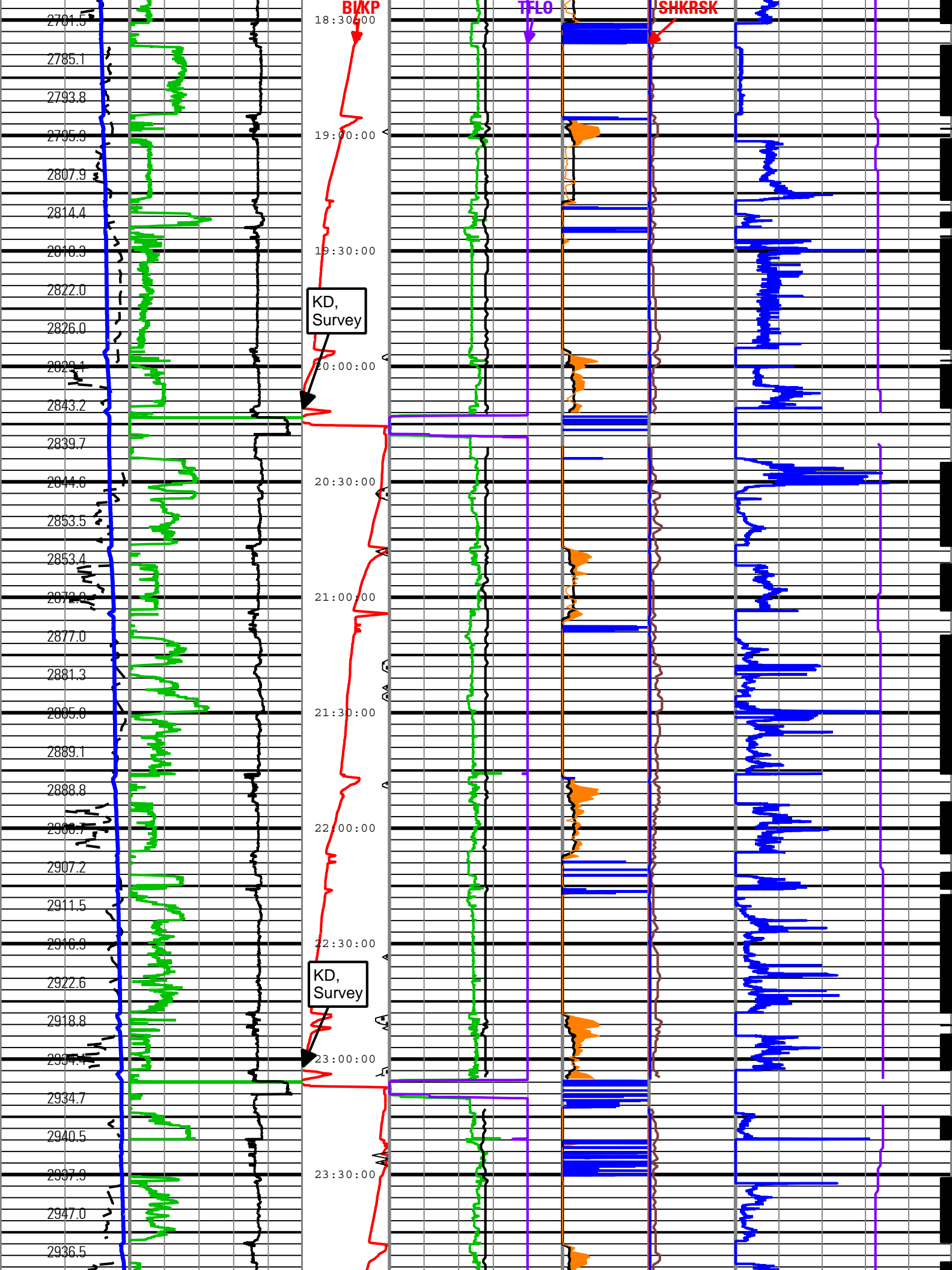


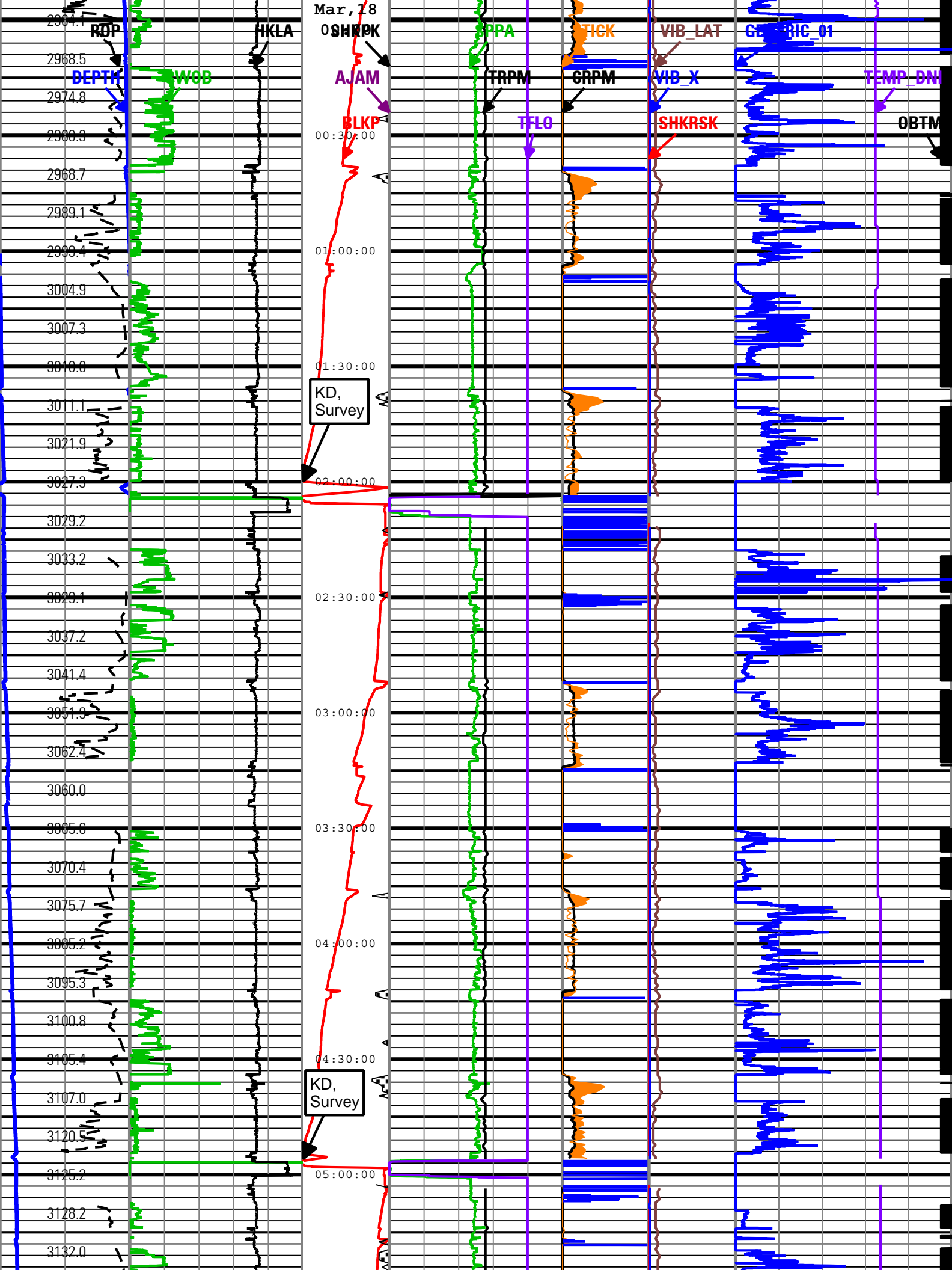


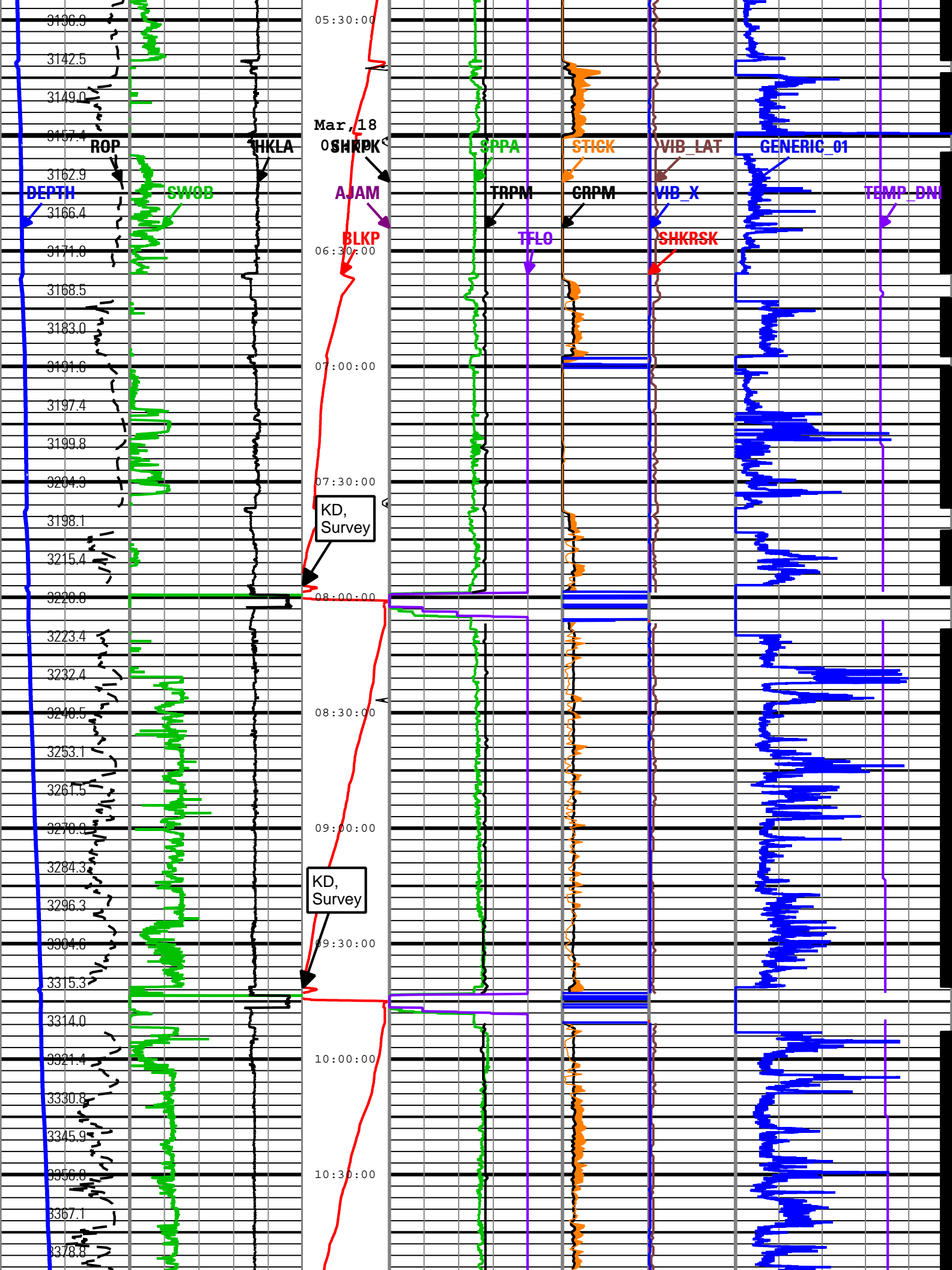


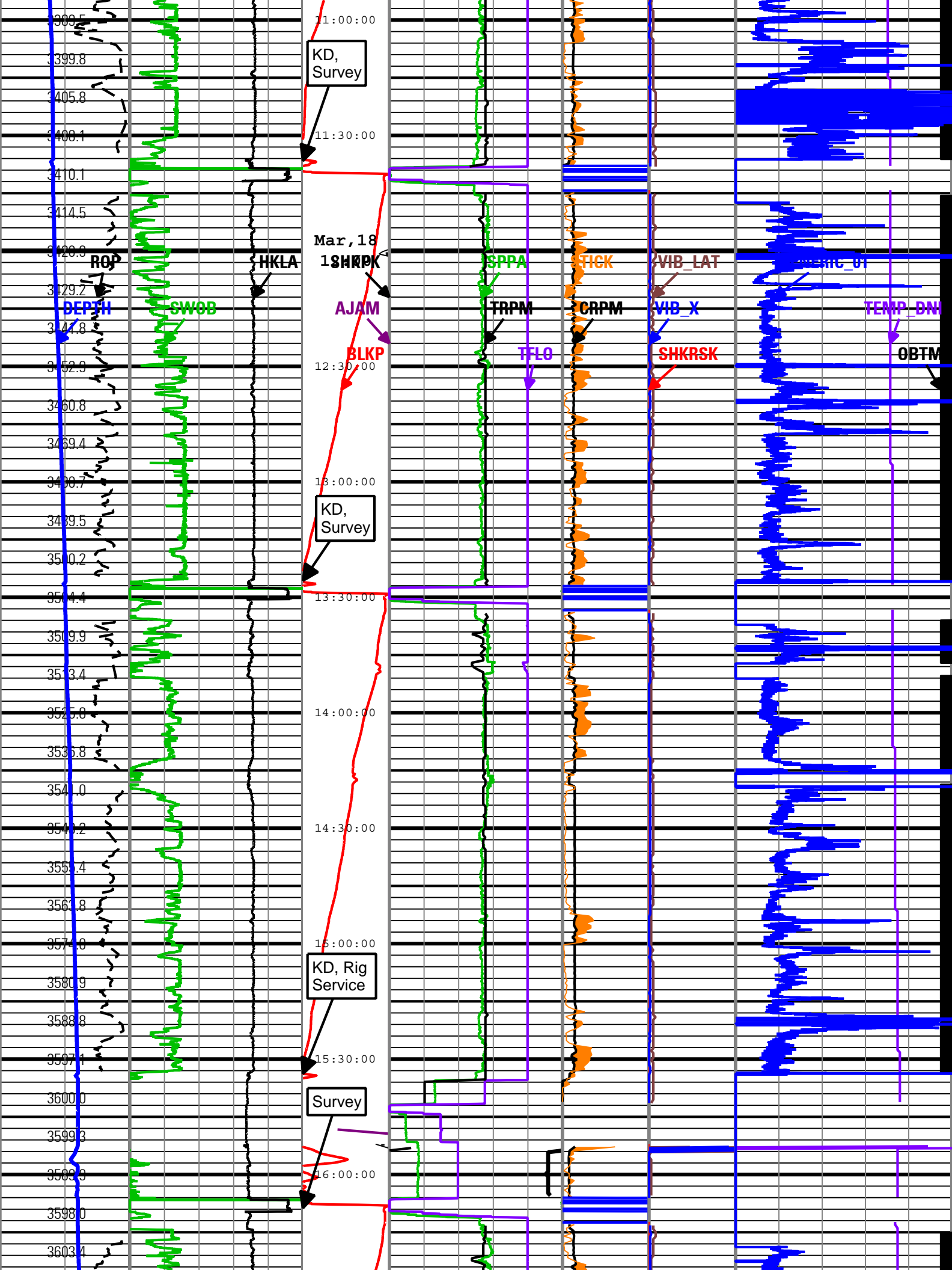


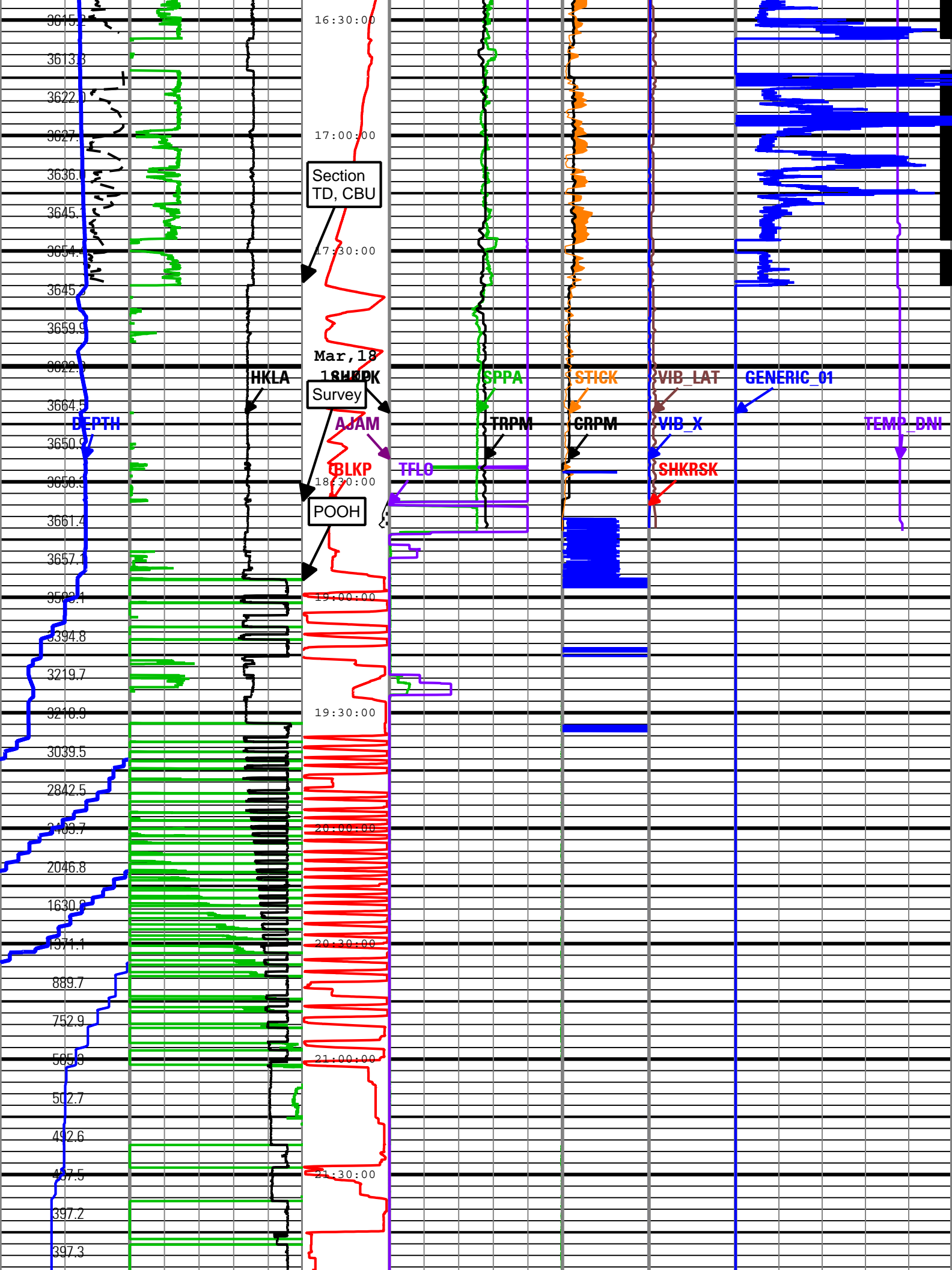


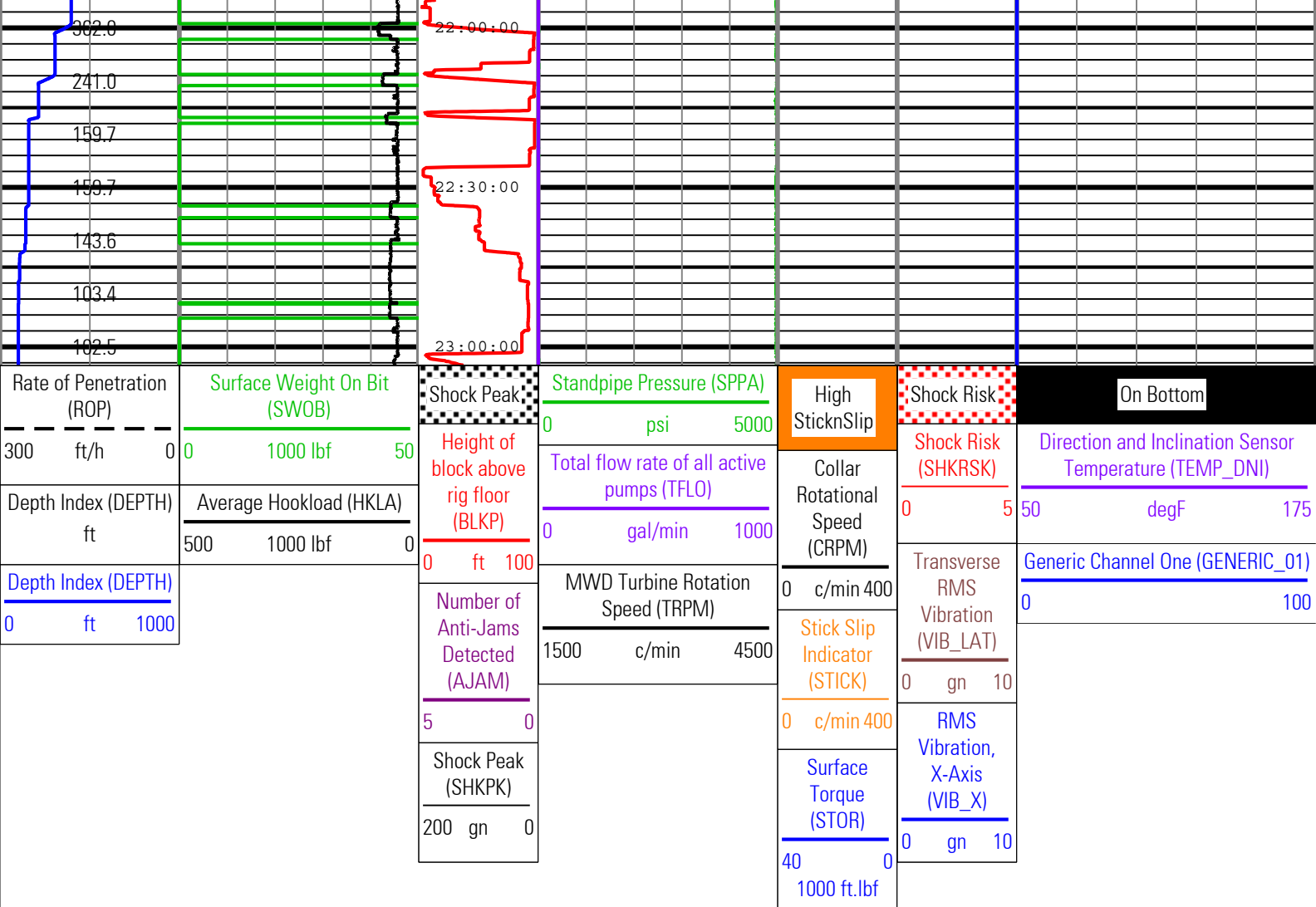












Description: TeleScope + ARC Drilling Mechanics Time RT Format: Log (PERFORM - Drilling Mechanics) Index Scale: 2 in per 3600 s Index Type: Time
Creation Date: 19-Mar-2010 00:49:37

Tool Control Parameters				
Parameter	Description	ToolPath	Value	Unit
OFFBTM_TH	Threshold for deciding whether the bit is off bottom	DnMWorkflow	Time Zoned	ft
Time Zone Parameters				
Parameter	Value	Start	Stop	
OFFBTM_TH	0	15-Mar-2010 17:57:51	16-Mar-2010 00:04:37	
OFFBTM_TH	0.15	16-Mar-2010 00:04:37	18-Mar-2010 19:19:21	

Company:	ExxonMobil Oil Corporation
Well:	Piceance Creek Unit 197 34 A9
Field:	Piceance Creek
County:	USA
State:	Colorado
Country:	USA



