

Bonanza Creek Energy, Inc.

Weld County, CO

Sec. 13-T5N-R62W

State Antelope 11-13HZ

Plan A

Plan: Plan A - Rev 0 Proposal

Sperry Drilling Services

Proposal Report

30 March, 2011

Well Coordinates: 1,393,345.42 N, 3,339,990.57 E (40° 24' 24.16" N, 104° 16' 44.74" W)

Ground Level: 4,571.00 ft

Local Coordinate Origin: Centered on Well State Antelope 11-13HZ

Viewing Datum: GL @ 4571.00ft (Ground Level)

TVDs to System: N

North Reference: True

Unit System: API - US Survey Feet - Custom

Geodetic Scale Factor Applied

Version: 2003.16 Build: 43I

HALLIBURTON

Plan Report for State Antelope 11-13HZ - Plan A - Rev 0 Proposal

Measured Depth (ft)	Inclination (°)	Azimuth (°)	Vertical Depth (ft)	+N/-S (ft)	+E/-W (ft)	Vertical Section (ft)	Dogleg Rate (°/100ft)	Build Rate (°/100ft)	Turn Rate (°/100ft)	Toolface Azimuth (°)
0.00	0.00	0.00	0.00	0.00	0.00	0.00	0.00	0.00	0.00	0.00
100.00	0.00	0.00	100.00	0.00	0.00	0.00	0.00	0.00	0.00	0.00
200.00	0.00	0.00	200.00	0.00	0.00	0.00	0.00	0.00	0.00	0.00
300.00	0.00	0.00	300.00	0.00	0.00	0.00	0.00	0.00	0.00	0.00
400.00	0.00	0.00	400.00	0.00	0.00	0.00	0.00	0.00	0.00	0.00
500.00	0.00	0.00	500.00	0.00	0.00	0.00	0.00	0.00	0.00	0.00
600.00	0.00	0.00	600.00	0.00	0.00	0.00	0.00	0.00	0.00	0.00
700.00	0.00	0.00	700.00	0.00	0.00	0.00	0.00	0.00	0.00	0.00
800.00	0.00	0.00	800.00	0.00	0.00	0.00	0.00	0.00	0.00	0.00
900.00	0.00	0.00	900.00	0.00	0.00	0.00	0.00	0.00	0.00	0.00
1,000.00	0.00	0.00	1,000.00	0.00	0.00	0.00	0.00	0.00	0.00	0.00
1,100.00	0.00	0.00	1,100.00	0.00	0.00	0.00	0.00	0.00	0.00	0.00
1,200.00	0.00	0.00	1,200.00	0.00	0.00	0.00	0.00	0.00	0.00	0.00
1,300.00	0.00	0.00	1,300.00	0.00	0.00	0.00	0.00	0.00	0.00	0.00
1,400.00	0.00	0.00	1,400.00	0.00	0.00	0.00	0.00	0.00	0.00	0.00
1,500.00	0.00	0.00	1,500.00	0.00	0.00	0.00	0.00	0.00	0.00	0.00
1,600.00	0.00	0.00	1,600.00	0.00	0.00	0.00	0.00	0.00	0.00	0.00
1,700.00	0.00	0.00	1,700.00	0.00	0.00	0.00	0.00	0.00	0.00	0.00
1,800.00	0.00	0.00	1,800.00	0.00	0.00	0.00	0.00	0.00	0.00	0.00
1,900.00	0.00	0.00	1,900.00	0.00	0.00	0.00	0.00	0.00	0.00	0.00
2,000.00	0.00	0.00	2,000.00	0.00	0.00	0.00	0.00	0.00	0.00	0.00
2,100.00	0.00	0.00	2,100.00	0.00	0.00	0.00	0.00	0.00	0.00	0.00
2,200.00	0.00	0.00	2,200.00	0.00	0.00	0.00	0.00	0.00	0.00	0.00
2,300.00	0.00	0.00	2,300.00	0.00	0.00	0.00	0.00	0.00	0.00	0.00
2,400.00	0.00	0.00	2,400.00	0.00	0.00	0.00	0.00	0.00	0.00	0.00
2,500.00	0.00	0.00	2,500.00	0.00	0.00	0.00	0.00	0.00	0.00	0.00
2,600.00	0.00	0.00	2,600.00	0.00	0.00	0.00	0.00	0.00	0.00	0.00
2,700.00	0.00	0.00	2,700.00	0.00	0.00	0.00	0.00	0.00	0.00	0.00
2,800.00	0.00	0.00	2,800.00	0.00	0.00	0.00	0.00	0.00	0.00	0.00
2,900.00	0.00	0.00	2,900.00	0.00	0.00	0.00	0.00	0.00	0.00	0.00
3,000.00	0.00	0.00	3,000.00	0.00	0.00	0.00	0.00	0.00	0.00	0.00
3,100.00	0.00	0.00	3,100.00	0.00	0.00	0.00	0.00	0.00	0.00	0.00
3,200.00	0.00	0.00	3,200.00	0.00	0.00	0.00	0.00	0.00	0.00	0.00
3,300.00	0.00	0.00	3,300.00	0.00	0.00	0.00	0.00	0.00	0.00	0.00
3,400.00	0.00	0.00	3,400.00	0.00	0.00	0.00	0.00	0.00	0.00	0.00
3,500.00	0.00	0.00	3,500.00	0.00	0.00	0.00	0.00	0.00	0.00	0.00
3,600.00	0.00	0.00	3,600.00	0.00	0.00	0.00	0.00	0.00	0.00	0.00
3,700.00	0.00	0.00	3,700.00	0.00	0.00	0.00	0.00	0.00	0.00	0.00
3,800.00	0.00	0.00	3,800.00	0.00	0.00	0.00	0.00	0.00	0.00	0.00
3,900.00	0.00	0.00	3,900.00	0.00	0.00	0.00	0.00	0.00	0.00	0.00
4,000.00	0.00	0.00	4,000.00	0.00	0.00	0.00	0.00	0.00	0.00	0.00
4,100.00	0.00	0.00	4,100.00	0.00	0.00	0.00	0.00	0.00	0.00	0.00
4,200.00	0.00	0.00	4,200.00	0.00	0.00	0.00	0.00	0.00	0.00	0.00
4,300.00	0.00	0.00	4,300.00	0.00	0.00	0.00	0.00	0.00	0.00	0.00
4,400.00	0.00	0.00	4,400.00	0.00	0.00	0.00	0.00	0.00	0.00	0.00
4,500.00	0.00	0.00	4,500.00	0.00	0.00	0.00	0.00	0.00	0.00	0.00
4,600.00	0.00	0.00	4,600.00	0.00	0.00	0.00	0.00	0.00	0.00	0.00
4,700.00	0.00	0.00	4,700.00	0.00	0.00	0.00	0.00	0.00	0.00	0.00
4,800.00	0.00	0.00	4,800.00	0.00	0.00	0.00	0.00	0.00	0.00	0.00
4,900.00	0.00	0.00	4,900.00	0.00	0.00	0.00	0.00	0.00	0.00	0.00
5,000.00	0.00	0.00	5,000.00	0.00	0.00	0.00	0.00	0.00	0.00	0.00
5,100.00	0.00	0.00	5,100.00	0.00	0.00	0.00	0.00	0.00	0.00	0.00
5,200.00	0.00	0.00	5,200.00	0.00	0.00	0.00	0.00	0.00	0.00	0.00
5,300.00	0.00	0.00	5,300.00	0.00	0.00	0.00	0.00	0.00	0.00	0.00
5,308.40	0.00	0.00	5,308.40	0.00	0.00	0.00	0.00	0.00	0.00	0.00
KOP - Begin 7.19°/100ft Build at 5308.40ft										
5,400.00	6.59	91.20	5,399.80	-0.11	5.26	5.26	7.19	7.19	0.00	91.20
5,500.00	13.78	91.20	5,498.16	-0.48	22.93	22.93	7.19	7.19	0.00	0.00

Plan Report for State Antelope 11-13HZ - Plan A - Rev 0 Proposal

Measured Depth (ft)	Inclination (°)	Azimuth (°)	Vertical Depth (ft)	+N/-S (ft)	+E/-W (ft)	Vertical Section (ft)	Dogleg Rate (°/100ft)	Build Rate (°/100ft)	Turn Rate (°/100ft)	Toolface Azimuth (°)
5,600.00	20.97	91.20	5,593.53	-1.10	52.77	52.78	7.19	7.19	0.00	0.00
5,700.00	28.17	91.20	5,684.42	-1.97	94.31	94.33	7.19	7.19	0.00	0.00
5,800.00	35.36	91.20	5,769.39	-3.07	146.90	146.93	7.19	7.19	0.00	0.00
5,900.00	42.55	91.20	5,847.10	-4.38	209.72	209.76	7.19	7.19	0.00	0.00
6,000.00	49.74	91.20	5,916.34	-5.89	281.77	281.83	7.19	7.19	0.00	0.00
6,100.00	56.94	91.20	5,976.00	-7.57	361.91	361.99	7.19	7.19	0.00	0.00
6,200.00	64.13	91.20	6,025.17	-9.39	448.90	449.00	7.19	7.19	0.00	0.00
6,300.00	71.32	91.20	6,063.05	-11.32	541.36	541.47	7.19	7.19	0.00	0.00
6,400.00	78.51	91.20	6,089.06	-13.33	637.83	637.97	7.19	7.19	0.00	0.00
6,500.00	85.70	91.20	6,102.78	-15.40	736.79	736.95	7.19	7.19	0.00	0.00
6,564.23	90.32	91.20	6,105.00	-16.75	800.95	801.13	7.19	7.19	0.00	0.00
End of Build at 6564.23ft - 7" Csg										
6,600.00	90.32	91.20	6,104.80	-17.49	836.71	836.90	0.00	0.00	0.00	0.00
6,700.00	90.32	91.20	6,104.23	-19.58	936.69	936.90	0.00	0.00	0.00	0.00
6,800.00	90.32	91.20	6,103.67	-21.67	1,036.67	1,036.89	0.00	0.00	0.00	0.00
6,900.00	90.32	91.20	6,103.10	-23.76	1,136.64	1,136.89	0.00	0.00	0.00	0.00
7,000.00	90.32	91.20	6,102.53	-25.85	1,236.62	1,236.89	0.00	0.00	0.00	0.00
7,100.00	90.32	91.20	6,101.97	-27.94	1,336.60	1,336.89	0.00	0.00	0.00	0.00
7,200.00	90.32	91.20	6,101.40	-30.03	1,436.57	1,436.89	0.00	0.00	0.00	0.00
7,300.00	90.32	91.20	6,100.84	-32.12	1,536.55	1,536.89	0.00	0.00	0.00	0.00
7,400.00	90.32	91.20	6,100.27	-34.21	1,636.53	1,636.88	0.00	0.00	0.00	0.00
7,500.00	90.32	91.20	6,099.70	-36.30	1,736.50	1,736.88	0.00	0.00	0.00	0.00
7,600.00	90.32	91.20	6,099.14	-38.40	1,836.48	1,836.88	0.00	0.00	0.00	0.00
7,700.00	90.32	91.20	6,098.57	-40.49	1,936.46	1,936.88	0.00	0.00	0.00	0.00
7,800.00	90.32	91.20	6,098.01	-42.58	2,036.43	2,036.88	0.00	0.00	0.00	0.00
7,900.00	90.32	91.20	6,097.44	-44.67	2,136.41	2,136.88	0.00	0.00	0.00	0.00
8,000.00	90.32	91.20	6,096.87	-46.76	2,236.39	2,236.87	0.00	0.00	0.00	0.00
8,100.00	90.32	91.20	6,096.31	-48.85	2,336.36	2,336.87	0.00	0.00	0.00	0.00
8,200.00	90.32	91.20	6,095.74	-50.94	2,436.34	2,436.87	0.00	0.00	0.00	0.00
8,300.00	90.32	91.20	6,095.18	-53.03	2,536.32	2,536.87	0.00	0.00	0.00	0.00
8,400.00	90.32	91.20	6,094.61	-55.12	2,636.29	2,636.87	0.00	0.00	0.00	0.00
Hold Angle at 90.32°										
8,500.00	90.32	91.20	6,094.04	-57.21	2,736.27	2,736.87	0.00	0.00	0.00	0.00
8,600.00	90.32	91.20	6,093.48	-59.30	2,836.24	2,836.86	0.00	0.00	0.00	0.00
8,700.00	90.32	91.20	6,092.91	-61.39	2,936.22	2,936.86	0.00	0.00	0.00	0.00
8,800.00	90.32	91.20	6,092.35	-63.48	3,036.20	3,036.86	0.00	0.00	0.00	0.00
8,900.00	90.32	91.20	6,091.78	-65.57	3,136.17	3,136.86	0.00	0.00	0.00	0.00
9,000.00	90.32	91.20	6,091.21	-67.66	3,236.15	3,236.86	0.00	0.00	0.00	0.00
9,100.00	90.32	91.20	6,090.65	-69.75	3,336.13	3,336.86	0.00	0.00	0.00	0.00
9,200.00	90.32	91.20	6,090.08	-71.84	3,436.10	3,436.85	0.00	0.00	0.00	0.00
9,300.00	90.32	91.20	6,089.52	-73.93	3,536.08	3,536.85	0.00	0.00	0.00	0.00
9,400.00	90.32	91.20	6,088.95	-76.02	3,636.06	3,636.85	0.00	0.00	0.00	0.00
9,500.00	90.32	91.20	6,088.38	-78.11	3,736.03	3,736.85	0.00	0.00	0.00	0.00
9,600.00	90.32	91.20	6,087.82	-80.20	3,836.01	3,836.85	0.00	0.00	0.00	0.00
9,700.00	90.32	91.20	6,087.25	-82.29	3,935.99	3,936.85	0.00	0.00	0.00	0.00
9,800.00	90.32	91.20	6,086.69	-84.38	4,035.96	4,036.85	0.00	0.00	0.00	0.00
9,900.00	90.32	91.20	6,086.12	-86.47	4,135.94	4,136.84	0.00	0.00	0.00	0.00
10,000.00	90.32	91.20	6,085.55	-88.56	4,235.92	4,236.84	0.00	0.00	0.00	0.00
10,098.00	90.32	91.20	6,085.00	-90.61	4,333.89	4,334.84	0.00	0.00	0.00	0.00
Total Depth at 10098.00ft										
10,098.60	90.32	91.20	6,085.00	-90.62	4,334.49	4,335.44	0.00	0.00	0.00	0.00

Plan Report for State Antelope 11-13HZ - Plan A - Rev 0 Proposal**Plan Annotations**

Measured Depth (ft)	Vertical Depth (ft)	Local Coordinates		Comment
		+N/-S (ft)	+E/-W (ft)	
5,308.40	5,308.40	0.00	0.00	KOP - Begin 7.19°/100ft Build at 5308.40ft
6,564.23	6,105.00	-16.75	800.95	End of Build at 6564.23ft
8,400.00	6,094.61	-55.12	2,636.29	Hold Angle at 90.32°
10,098.00	6,085.00	-90.61	4,333.89	Total Depth at 10098.00ft

Vertical Section Information

Angle Type	Target	Azimuth (°)	Origin Type	Origin		Start TVD (ft)
				+N/-S (ft)	+E/-W (ft)	
Target	State Antelope 11-13HZ_Plan A - Rev0_BHL Tgt	91.20	Slot	0.00	0.00	0.00

Survey tool program

From (ft)	To (ft)	Survey/Plan	Survey Tool
0.00	10,098.38	Plan A - Rev 0 Proposal	MWD

Casing Details

Measured Depth (ft)	Vertical Depth (ft)	Name	Casing Diameter (")	Hole Diameter (")
6,564.23	6,105.00	7" Csg	7	8-3/4

Targets associated with this wellbore

Target Name	TVD (ft)	+N/-S (ft)	+E/-W (ft)	Shape
State Antelope 11-13HZ_PlanA - Rev0_Csg Pt Tgt	6,105.00	-16.75	800.95	Point
State Antelope 11-13HZ_Plan A - Rev0_BHL Tgt	6,085.00	-90.70	4,334.49	Point
State Antelope 11-13HZ_Sec. 13 Lines	0.00	0.00	0.00	Polygon

North Reference Sheet for Sec. 13-T5N-R62W - State Antelope 11-13HZ - Plan A

All data is in US Feet unless otherwise stated. Directions and Coordinates are relative to True North Reference.

Vertical Depths are relative to GL @ 4571.00ft (Ground Level). Northing and Easting are relative to State Antelope 11-13HZ

Coordinate System is US State Plane 1983, Colorado Northern Zone using datum North American Datum 1983, ellipsoid GRS 1980

Projection method is Lambert Conformal Conic (2 parallel)

Central Meridian is -105.50°, Longitude Origin:0° 0' 0.000 E°, Latitude Origin:40° 47' 0.000 N°

False Easting: 3,000,000.00ft, False Northing: 1,000,000.00ft, Scale Reduction: 0.99996054

Grid Coordinates of Well: 1,393,345.42 ft N, 3,339,990.57 ft E

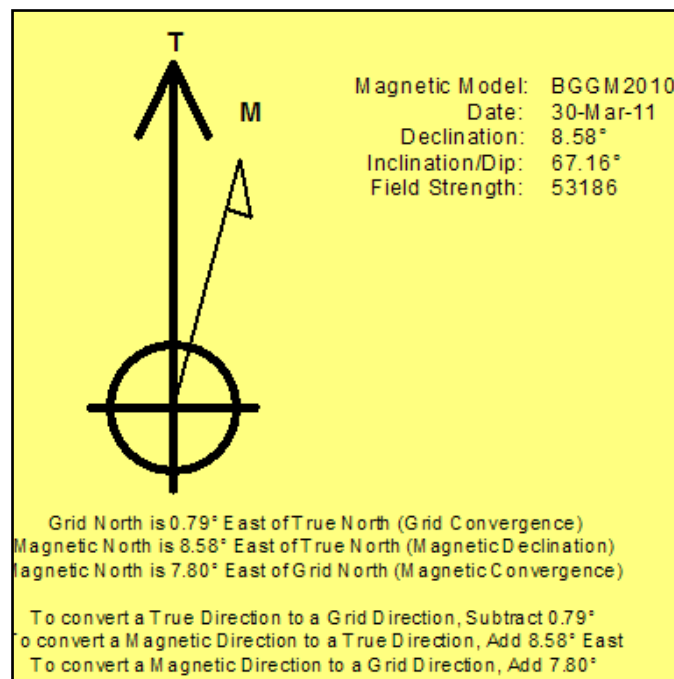
Geographical Coordinates of Well: 40° 24' 24.16" N, 104° 16' 44.74" W

Grid Convergence at Surface is: 0.79°

Based upon Minimum Curvature type calculations, at a Measured Depth of 10,098.60ft

the Bottom Hole Displacement is 4,335.44ft in the Direction of 91.20° (True).

Magnetic Convergence at surface is: -7.80° (30 March 2011, , BGGM2010)



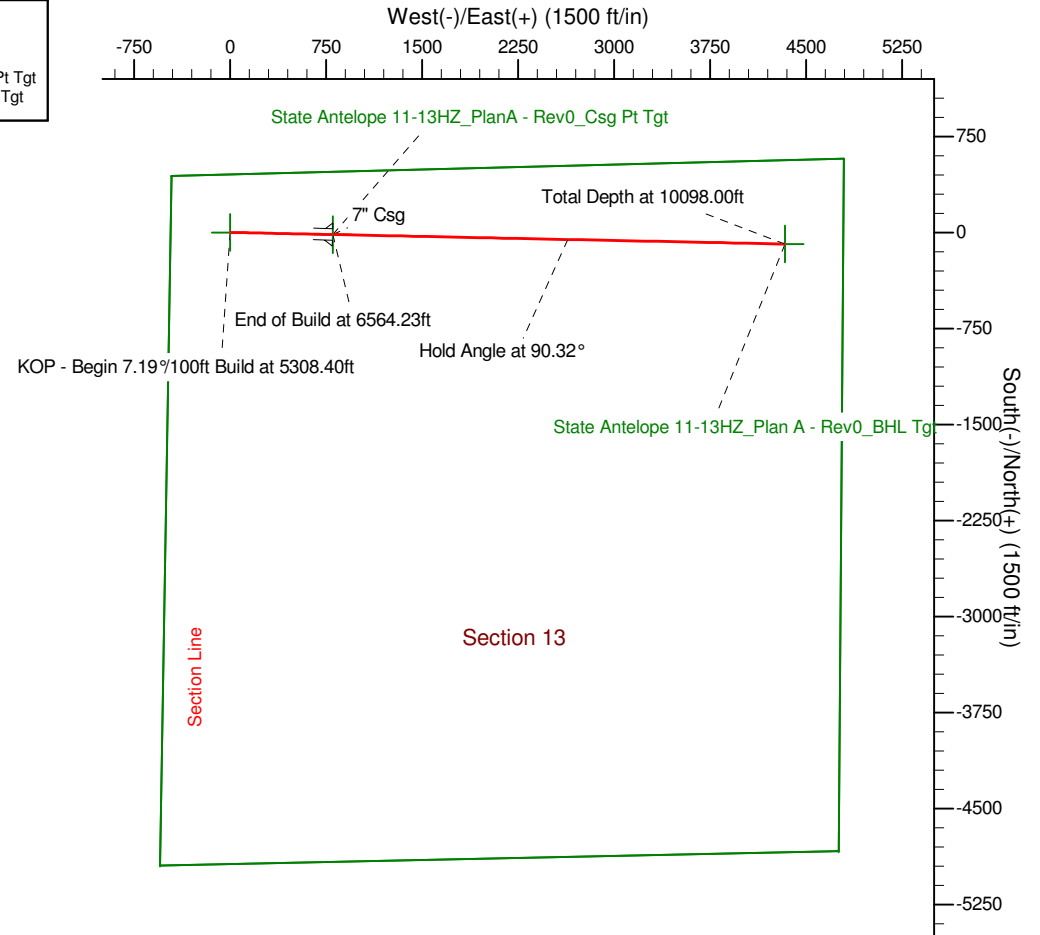
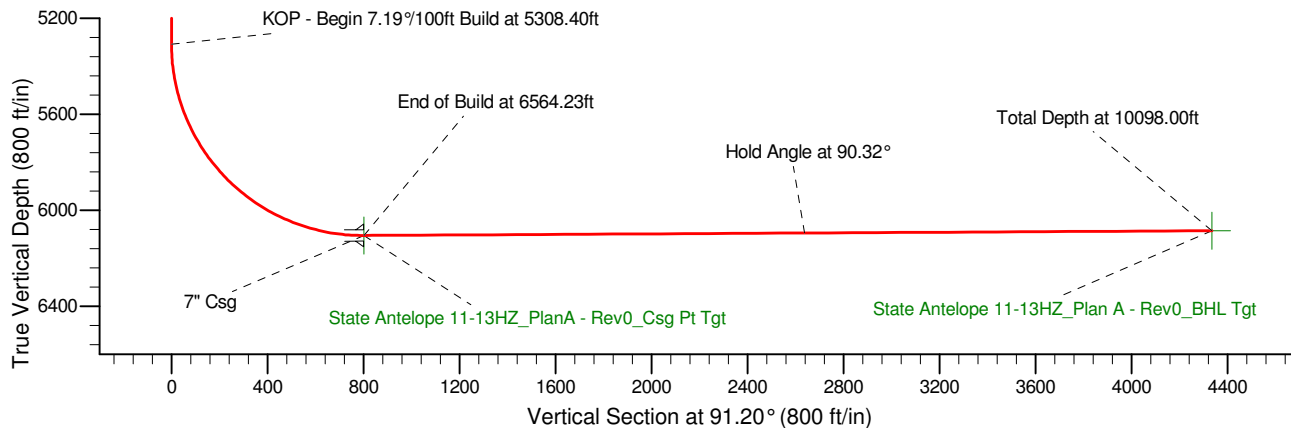
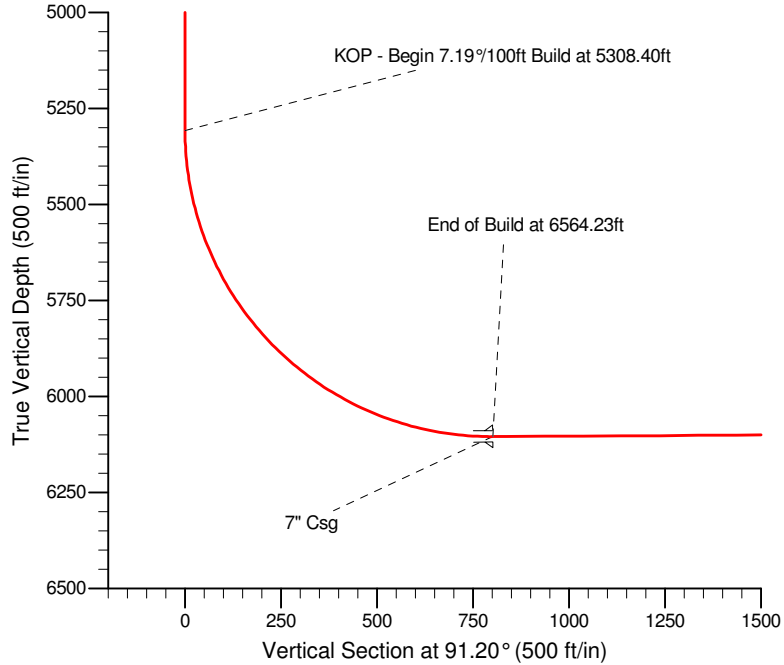
Project: Weld County, CO
 Site: Sec. 13-T5N-R62W
 Well: State Antelope 11-13HZ
 Wellbore: Plan A
 Design: Plan A - Rev 0 Proposal

Bonanza Creek Energy, Inc.

HALLIBURTON
 Sperry Drilling

SECTION DETAILS

Sec	MD	Inc	Azi	TVD	+N/-S	+E/-W	DLeg	TFace	VSec	Target
1	0.00	0.00	0.00	0.00	0.00	0.00	0.00	0.00	0.00	
2	5308.40	0.00	0.00	5308.40	0.00	0.00	0.00	0.00	0.00	
3	6564.23	90.32	91.20	6105.00	-16.75	800.95	7.19	91.20	801.12	State Antelope 11-13HZ_PlanA - Rev0_Csg Pt Tgt
4	10098.60	90.32	91.20	6085.00	-90.62	4334.49	0.00	0.00	4335.44	State Antelope 11-13HZ_Plan A - Rev0_BHL Tgt



WELL DETAILS: State Antelope 11-13HZ

Ground Level: 4571.00
 Northing 1393345.42 Easting 3339990.57 Latitude 40° 24' 24.156 N Longitude 104° 16' 44.738 W

Plan: Plan A - Rev 0 Proposal (State Antelope 11-13HZ/Plan A)

Created By: Jay Lantz Date: 10:47, March 30 2011