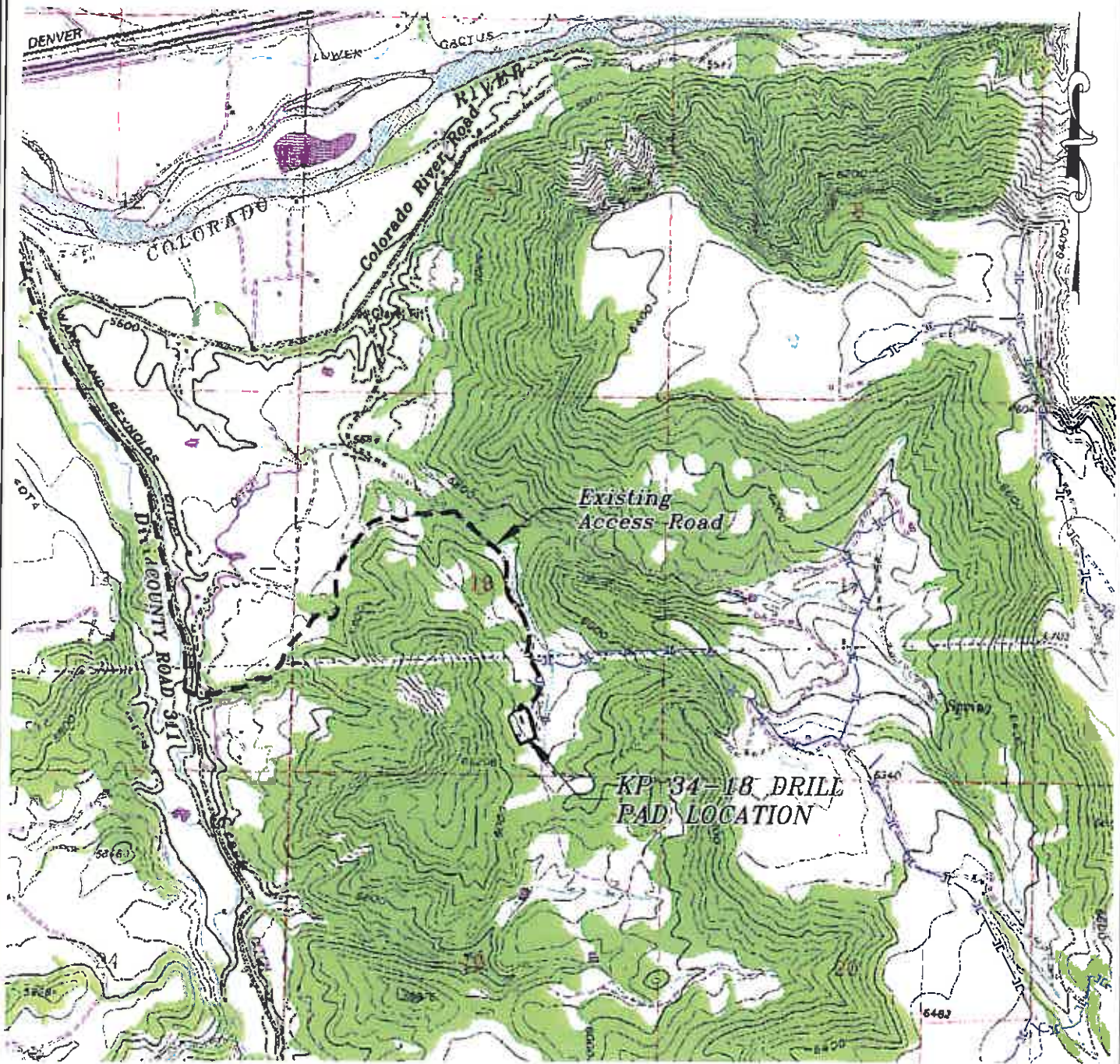


Section 18  
T. 6 S., R. 91 W



1000 0 2000  
GRAPHIC SCALE IN FEET  
1 INCH = 2000 FEET

**ACCESS DESCRIPTION:**

FROM THE INTERSECTION OF COLORADO INTERSTATE 70 OVERPASS (Exit 97) AND RIVER FRONTAGE ROAD SOUTH OF SILT, COLORADO, PROCEED EAST  $\pm 0.4$  MILES ALONG RIVER FRONTAGE ROAD TO THE INTERSECTION WITH COUNTY ROAD 311 (DIVIDE CREEK ROAD), PROCEED RIGHT IN A SOUTHERLY TO EASTERLY DIRECTION  $\pm 2.0$  MILES TO A 'Y' INTERSECTION WITH COUNTY ROAD 335, PROCEED RIGHT IN AN SOUTHERLY DIRECTION ALONG COUNTY ROAD 311  $\pm 1.3$  MILES TO THE INTERSECTION WITH A DIRT GRAVEL ROAD, PROCEED LEFT IN AN EASTERLY TO NORTHEASTERLY DIRECTION  $\pm 1.0$  MILES TO THE INTERSECTION WITH A DIRT GRAVEL ROAD, PROCEED PROCEED RIGHT IN AN SOUTHERLY DIRECTION  $\pm 0.6$  MILES TO THE EXISTING KP 34-18 DRILL PAD LOCATION, AS SHOWN HEREON.

Construction Plan Prepared for:

**Williams** Williams Production, RMT

KP 34-18 Drill Pad - Plat 5  
ACCESS ROAD MAP

SCALE: 1" = 2000'  
DATE: 1/28/11  
PLAT: 5 of 7  
PROJECT: Williams Kokopelli  
DFT: CWS

100 East Frank Street  
Waco, Colorado 81080  
Ph: (970) 825-1300  
Fax: (970) 825-2773

**BOOKCLIFF**  
Survey Services, Inc.