

T4S, R96W, 6th P.M.

Encana Oil & Gas (USA) INC.

Well location, SG #8501E-21 N22 496 (SURFACE LOCATION), located as shown in Lot 5 of Section 22, T4S, R96W, 6th P.M., Garfield County, Colorado.

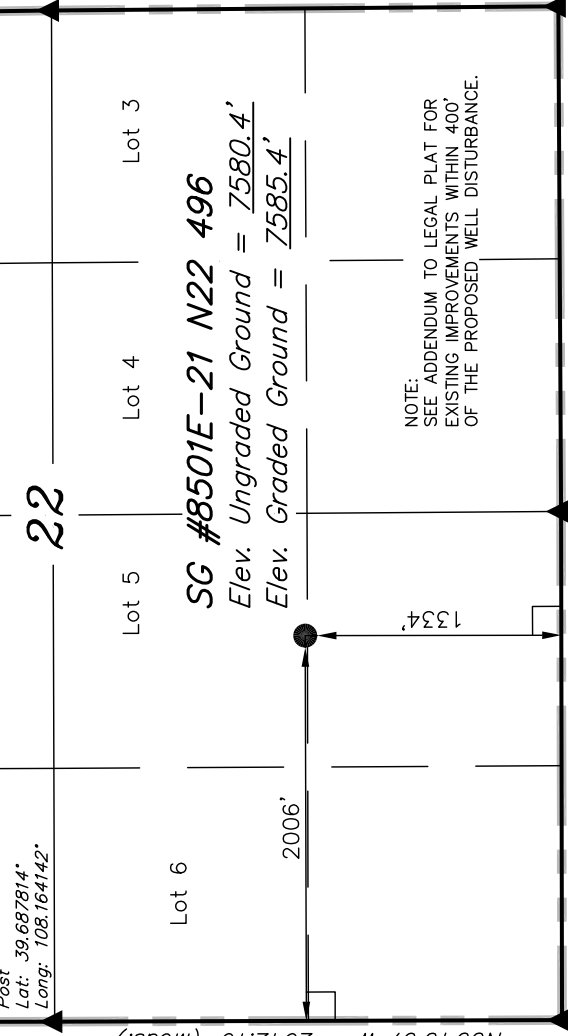
BASIS OF ELEVATION

BENCH MARK (H79) LOCATED IN THE NE 1/4 OF SECTION 35, T4S, R98W, 6th P.M. TAKEN FROM THE BULL FORK QUADRANGLE, COLORADO, 7.5 MINUTE SERIES (TOPOGRAPHICAL MAP) PUBLISHED BY THE UNITED STATES DEPARTMENT OF THE INTERIOR, GEOLOGICAL SURVEY. SAID ELEVATION IS MARKED AS BEING 8535 FEET.

BASIS OF BEARINGS

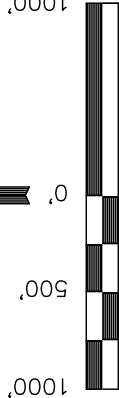
BASIS OF BEARINGS IS A G.P.S. OBSERVATION.

FIGURE #1c



1953 Brass Cap
0.2' High, Mound
of Stones, Steel
Post
Lat: 39.687828°
Long: 108.145436°

1953 Brass Cap
0.8' High, Steel
Post
Lat: 39.680583°
Long: 108.145383°



CERTIFICATE

THIS IS TO CERTIFY THAT THE ABOVE PLAT WAS PREPARED FROM FIELD NOTES OF ACTUAL SURVEYS MADE BY ME OR UNDER MY SUPERVISION AND THAT THE SAME ARE TRUE AND CORRECT TO THE BEST OF MY KNOWLEDGE AND BELIEF.

REGISTERED LAND SURVEYOR
REGISTRATION NO. 17492
STATE OF COLORADO

REVISED: 12-14-10

UINTAH ENGINEERING & LAND SURVEYING
85 SOUTH 200 EAST - VERNAL, UTAH 84078
(435) 789-1017

SCALE 1" = 1000'	DATE SURVEYED: 08-03-10	DATE DRAWN: 11-23-10
PARTY B.H. B.J. C.H.	REFERENCES G.L.O. PLAT	
WEATHER COOL	FILE	
		Encana Oil & Gas (USA) INC.

PDOP = 4.2
NAD 83 (SURFACE LOCATION) LATITUDE = 39°41'03.20" (39.684222) LONGITUDE = 108°09'25.24" (108.157011)
NAD 27 (SURFACE LOCATION) LATITUDE = 39°41'03.28" (39.684244) LONGITUDE = 108°09'22.95" (108.156375)

NOTE:
THE PROPOSED BOTTOM HOLE FOR THIS WELL
IS LOCATED IN THE NE 1/4 NE 1/4 OF SECTION
21, T4S, R96W, 6th P.M. AT A DISTANCE OF 1225' FNL
1308' FEL. IT BEARS N50°37'56"W 4296.81' FROM
THE PROPOSED WELL HEAD.

LEGEND:

- 90° SYMBOL
- PROPOSED WELL HEAD.
- SECTION CORNERS LOCATED.

T4S, R96W, 6th P.M.

Encana Oil & Gas (USA) INC.

Well location, SG #8501E-21 N22 496 (TARGET BOTTOM HOLE), located as shown in the NE 1/4 NE 1/4 of Section 21, T4S, R96W, 6th P.M., Garfield County, Colorado.

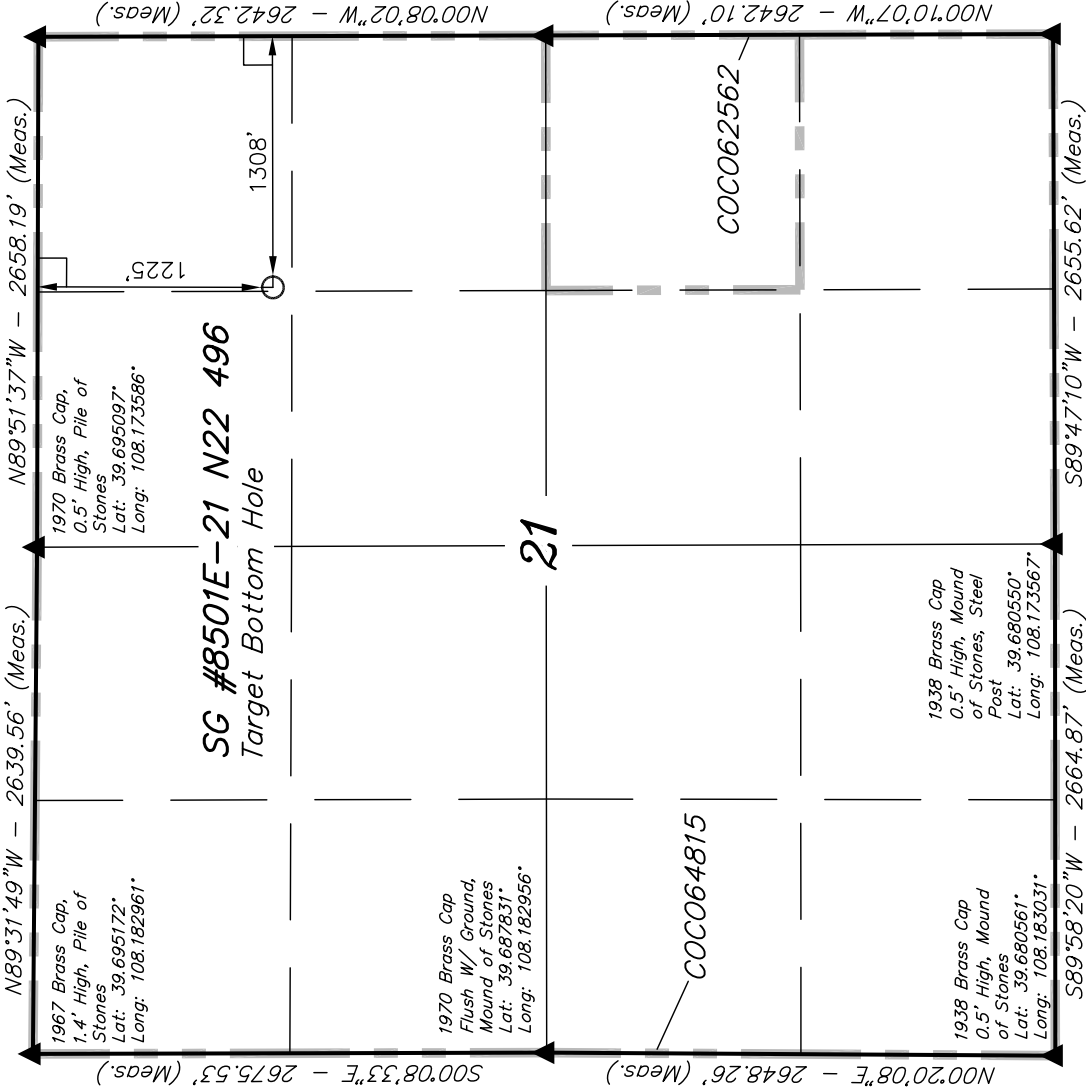
BASIS OF ELEVATION

BENCH MARK (H79) LOCATED IN THE NE 1/4 OF SECTION 35, T4S, R98W, 6th P.M. TAKEN FROM THE BULL FORK QUADRANGLE, COLORADO, 7.5 MINUTE SERIES (TOPOGRAPHICAL MAP) PUBLISHED BY THE UNITED STATES DEPARTMENT OF THE INTERIOR, GEOLOGICAL SURVEY. SAID ELEVATION IS MARKED AS BEING 8535 FEET.

BASIS OF BEARINGS

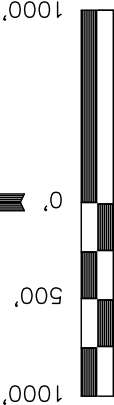
BASIS OF BEARINGS IS A G.P.S. OBSERVATION.

FIGURE #1d



1975 Brass Cap
0.5' High, Mound
of Stones, Steel
Post
Lat: 39.687814°
Long: 108.164142°

1953 Brass Cap
0.7' High, Mound
of Stones, Steel
Post
Lat: 39.680564°
Long: 108.164133°



CERTIFICATE

THIS IS TO CERTIFY THAT THE ABOVE PLAT WAS PREPARED FROM FIELD NOTES OF ACTUAL SURVEYS MADE BY ME OR UNDER MY SUPERVISION AND THAT THE SAME ARE TRUE AND CORRECT TO THE BEST OF MY KNOWLEDGE AND BELIEF.

REGISTERED LAND SURVEYOR
REGISTRATION NO. 17492
STATE OF COLORADO

REVISED: 12-14-10

UINTAH ENGINEERING & LAND SURVEYING
85 SOUTH 200 EAST - VERNAL, UTAH 84078
(435) 789-1017

SCALE 1" = 1000'	DATE SURVEYED: 08-03-10	DATE DRAWN: 11-23-10
PARTY B.H. B.J. C.H.	REFERENCES G.L.O. PLAT	
WEATHER COOL	FILE	
Encana Oil & Gas (USA) INC.		

NAD 83 (TARGET BOTTOM HOLE)	
LATITUDE = 39°41'30.19"	(39.691719)
LONGITUDE = 108°10'07.64"	(108.168789)
NAD 27 (TARGET BOTTOM HOLE)	
LATITUDE = 39°41'30.28"	(39.691744)
LONGITUDE = 108°10'05.35"	(108.168153)

NOTE:
THE PROPOSED BOTTOM HOLE FOR THIS WELL
BEARS N50°37'56"W 4296.81' FROM THE
PROPOSED WELL HEAD.

LEGEND:

- = 90° SYMBOL
- = PROPOSED WELL HEAD.
- ▲ = SECTION CORNERS LOCATED.