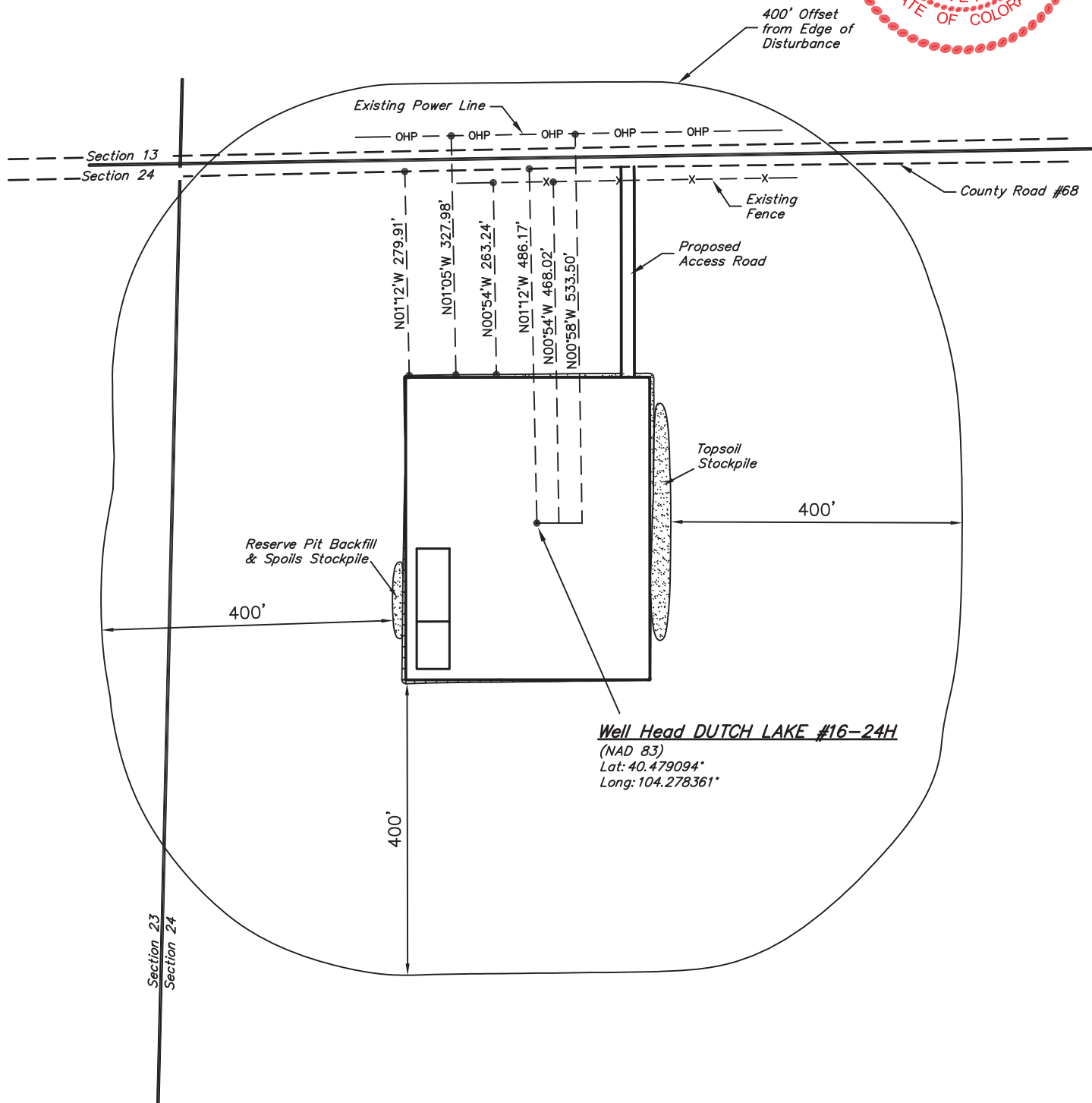




EOG RESOURCES, INC.
ADDENDUM TO LEGAL PLAT FOR
DUTCH LAKE #16-24H
SECTION 24, T6N, R62W, 6th P.M.
501' FNL 501' FWL

SCALE: 1" = 200'
DATE: 01-24-11
DRAWN BY: K.O.



EOG RESOURCES, INC.

CONSTRUCTION LAYOUT FOR

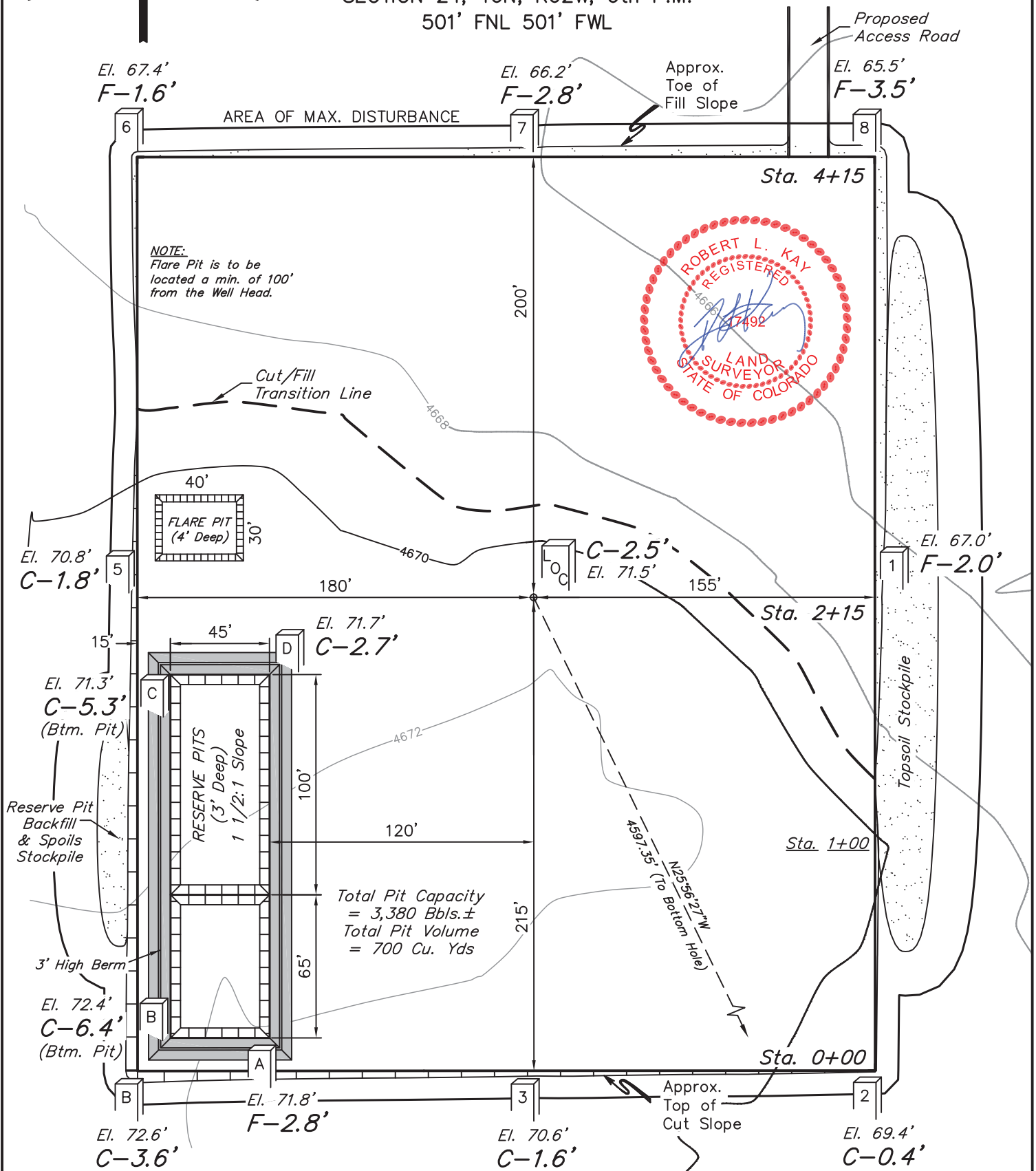
DUTCH LAKE #16-24H
SECTION 24, T6N, R62W, 6th P.M.
501' FNL 501' FWL

FIGURE #1

SCALE: 1" = 60'

DATE: 01-24-11

DRAWN BY: K.O.



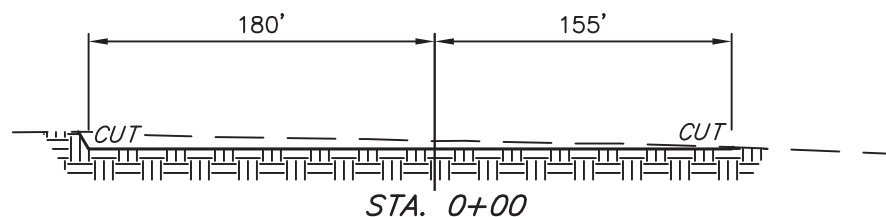
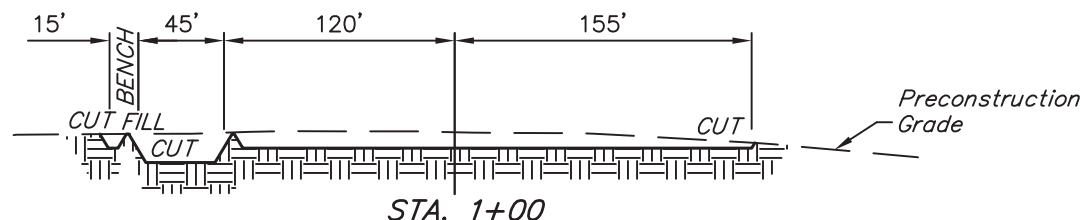
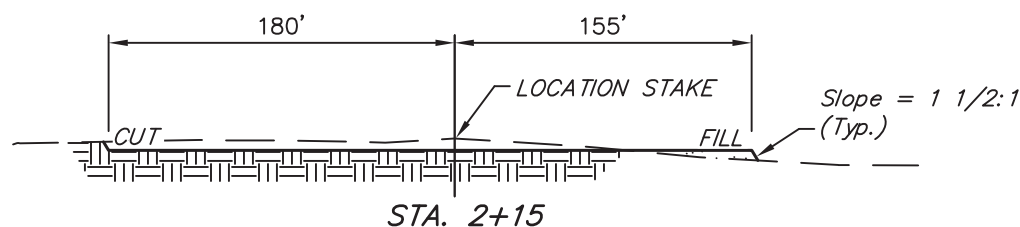
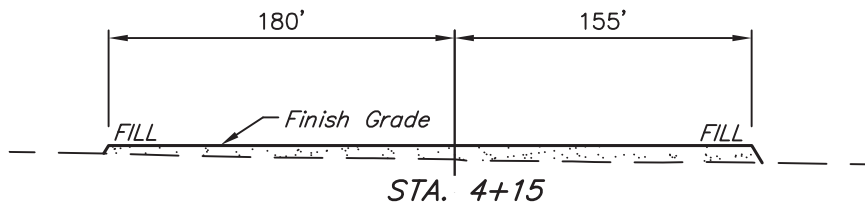
Elev. Ungraded Ground At Loc. Stake = 4671.5'
FINISHED GRADE ELEV. AT LOC. STAKE = 4669.0'

UINTAH ENGINEERING & LAND SURVEYING
85 So. 200 East * Vernal, Utah 84078 * (435) 789-1017

1" = 40'
X-Section
Scale
1" = 100'
DATE: 01-24-11
DRAWN BY: K.O.

EOG RESOURCES, INC.
CONSTRUCTION LAYOUT CROSS SECTIONS FOR
DUTCH LAKE #16-24H
SECTION 24, T6N, R62W, 6th P.M.
501' FNL 501' FWL

FIGURE #2



NOTE:

Topsoil should not be Stripped Below Finished Grade on Substructure Area.

APPROXIMATE ACREAGES

WELL SITE DISTURBANCE = ± 3.994 ACRES
ACCESS ROAD DISTURBANCE = ± 0.195 ACRES
TOTAL = ± 4.189 ACRES

* NOTE:
FILL QUANTITY INCLUDES 5% FOR COMPACTION

APPROXIMATE YARDAGES

(6") Topsoil Stripping = 2,710 Cu. Yds.
Remaining Location = 6,030 Cu. Yds.
TOTAL CUT = 8,740 CU.YDS.
FILL = 5,680 CU.YDS.

EXCESS MATERIAL = 3,060 Cu. Yds.
Topsoil & Pit Backfill = 3,060 Cu. Yds.
(1/2 Pit Vol.)
EXCESS UNBALANCE = 0 Cu. Yds.
(After Interim Rehabilitation)

UINTAH ENGINEERING & LAND SURVEYING
85 So. 200 East * Vernal, Utah 84078 * (435) 789-1017

EOG RESOURCES, INC.

TYPICAL RIG LAYOUT FOR

DUTCH LAKE #16-24H
SECTION 24, T6N, R62W, 6th P.M.
501' FNL 501' FWL

FIGURE #3

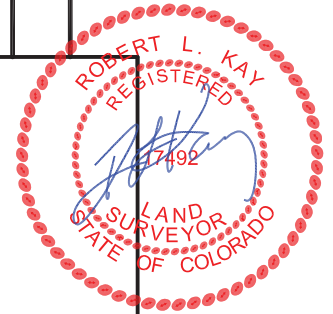
SCALE: 1" = 60'

DATE: 01-24-11

DRAWN BY: K.O.

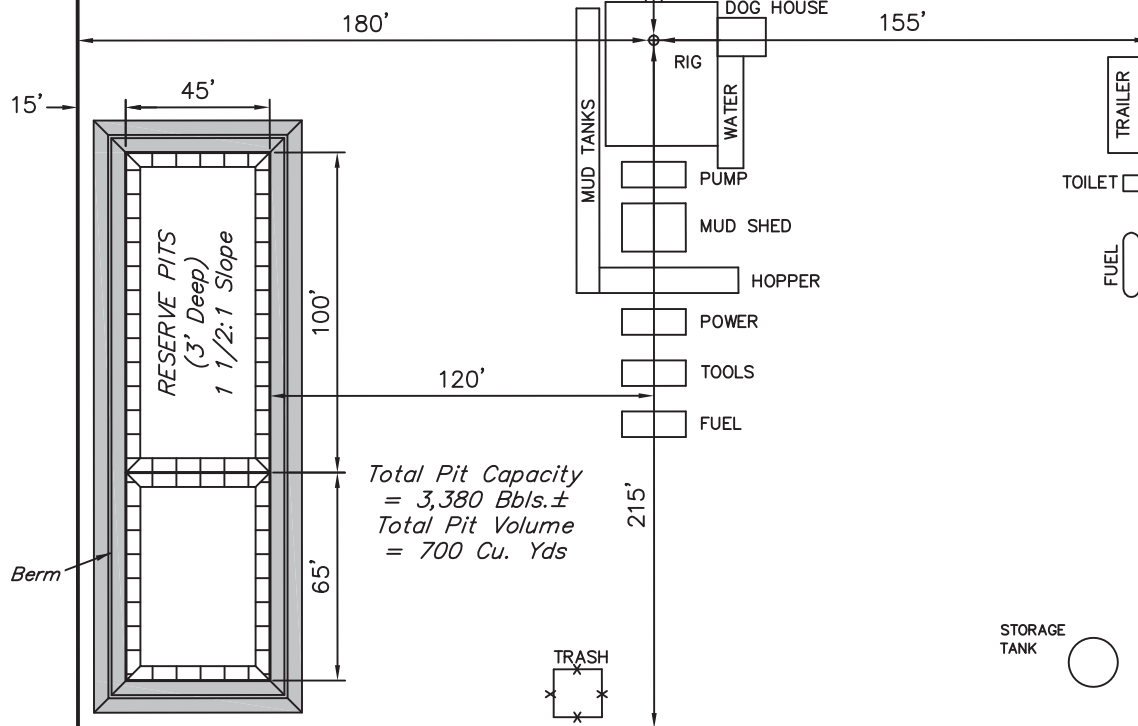
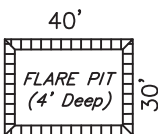


Proposed
Access Road



DATA

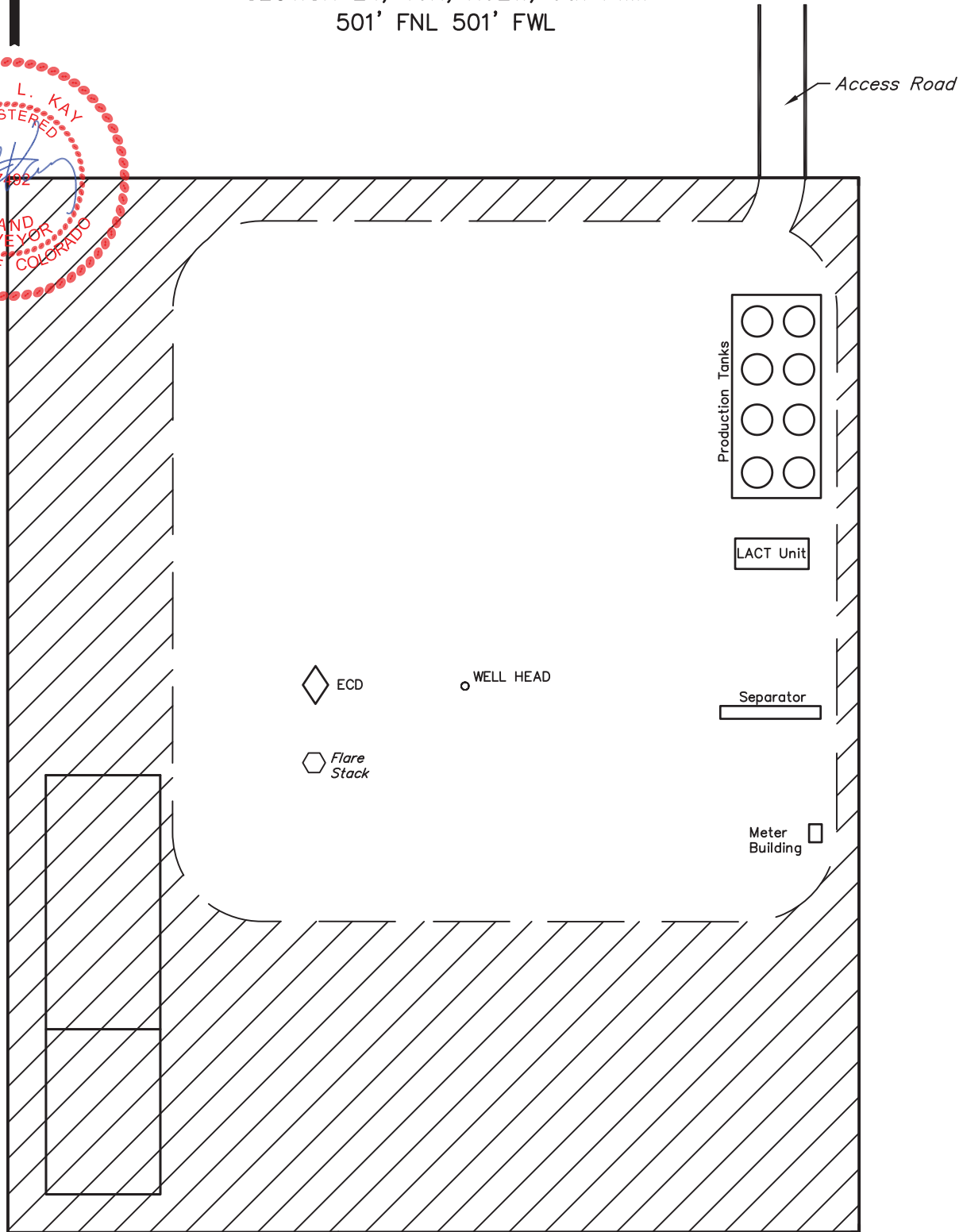
NOTE:
Flare Pit is to be
located a min. of 100'
from the Well Head.



EOG RESOURCES, INC.
RECLAMATION DIAGRAM FOR
DUTCH LAKE #16-24H
SECTION 24, T6N, R62W, 6th P.M.
501' FNL 501' FWL

FIGURE #4

SCALE: 1" = 60'
DATE: 01-24-11
DRAWN BY: K.O.



APPROXIMATE ACREAGES
UN-RECLAIMED = ± 1.553 ACRES

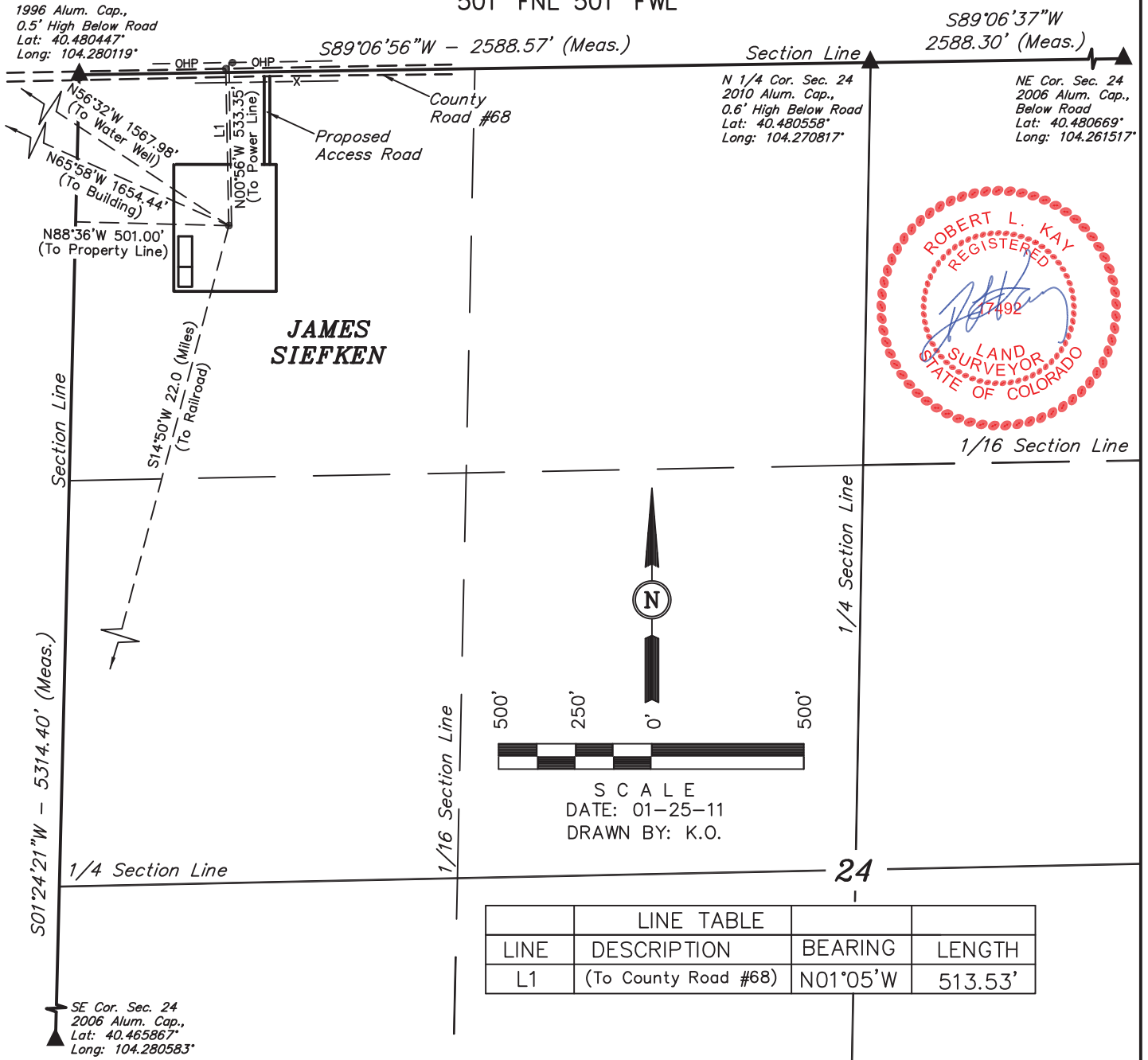


EOG RESOURCES, INC.

LOCATION DRAWING FOR

DUTCH LAKE #16-24H
SECTION 24, T6N, R62W, 6th P.M.
501' FNL 501' FWL

FIGURE #5



PLANT COMMUNITY

- ☐ DISTURBED GRASSLAND
- ☐ NATIVE GRASSLAND
- ☐ SHRUB LAND
- ☐ PLAINS RIPARIAN
- ☐ MOUNTAIN RIPARIAN
- ☐ FOREST LAND
- ☐ WETLANDS AQUATIC
- ☐ ALPINE
- ☐ OTHER (Describe): _____

CURRENT LAND USE

- CROP LAND: ☐ IRRIGATED ☐ DRY LAND ☐ IMPROVED PASTURE ☐ HAY MEADOW ☐ CRP
- NON-CROP LAND: ☐ RANGELAND ☐ TIMBER ☐ RECREATIONAL ☐ OTHER (Describe) _____
- SUBDIVIDED: ☐ INDUSTRIAL ☐ COMMERCIAL ☐ RESIDENTIAL _____

FUTURE LAND USE

- CROP LAND: ☐ IRRIGATED ☐ DRY LAND ☐ IMPROVED PASTURE ☐ HAY MEADOW ☐ CRP
- NON-CROP LAND: ☐ RANGELAND ☐ TIMBER ☐ RECREATIONAL ☐ OTHER (Describe) _____
- SUBDIVIDED: ☐ INDUSTRIAL ☐ COMMERCIAL ☐ RESIDENTIAL _____