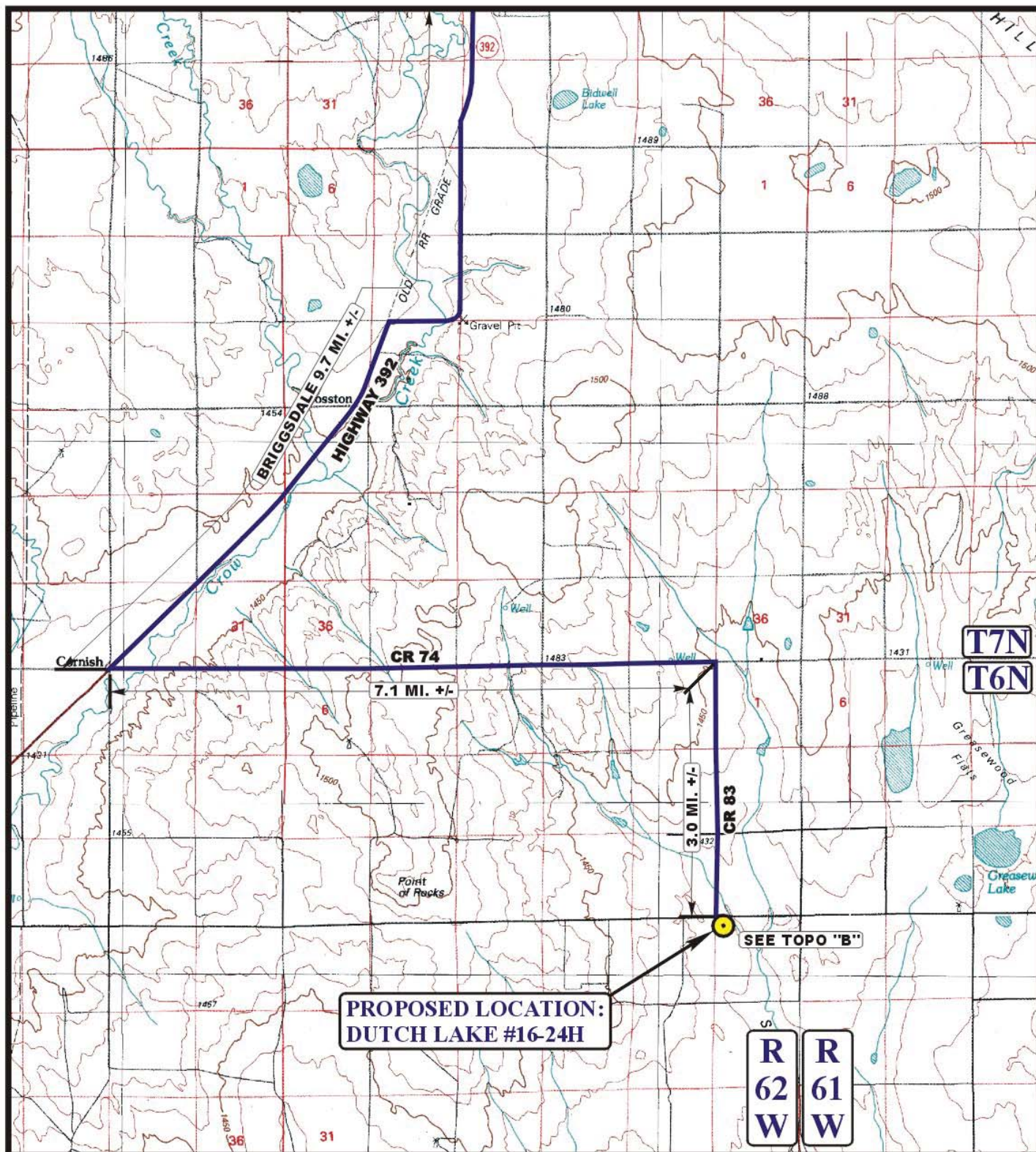


EOG RESOURCES, INC.  
DUTCH LAKE #16-24H  
SECTION 24, T6N, R62W, 6<sup>th</sup> P.M.

PROCEED IN A SOUTHERLY, THEN SOUTHWESTERLY DIRECTION FROM BRIGGS DALE, COLORADO ALONG HIGHWAY 392 APPROXIMATELY 9.7 MILES TO THE JUNCTION OF THIS ROAD AND COUNTY ROAD 74 TO THE EAST; TURN LEFT AND PROCEED IN AN EASTERLY DIRECTION APPROXIMATELY 7.1 MILES TO THE JUNCTION OF THIS ROAD AND COUNTY ROAD 83 TO THE SOUTH; TURN RIGHT AND PROCEED IN A SOUTHERLY DIRECTION APPROXIMATELY 3.0 MILES TO THE JUNCTION OF THIS ROAD AND COUNTY ROAD 68 TO THE EAST; TURN LEFT AND PROCEED IN AN EASTERLY DIRECTION APPROXIMATELY 0.1 MILES TO THE BEGINNING OF THE PROPOSED ACCESS TO THE SOUTH; FOLLOW ROAD FLAGS IN A SOUTHERLY DIRECTION APPROXIMATELY 283' TO THE PROPOSED LOCATION.

TOTAL DISTANCE FROM BRIGGS DALE, COLORADO TO THE PROPOSED WELL LOCATION IS APPROXIMATELY 19.9 MILES.



# LEGEND:

 PROPOSED LOCATION

EOG RESOURCES, INC.

DUTCH LAKE #16-24H  
SECTION 24, T6N, R62W, 6th P.M.  
501' FNL 501' FWL



Utah Engineering & Land Surveying  
85 South 200 East Vernal, Utah 84078  
(435) 789-1017 \* FAX (435) 789-1813



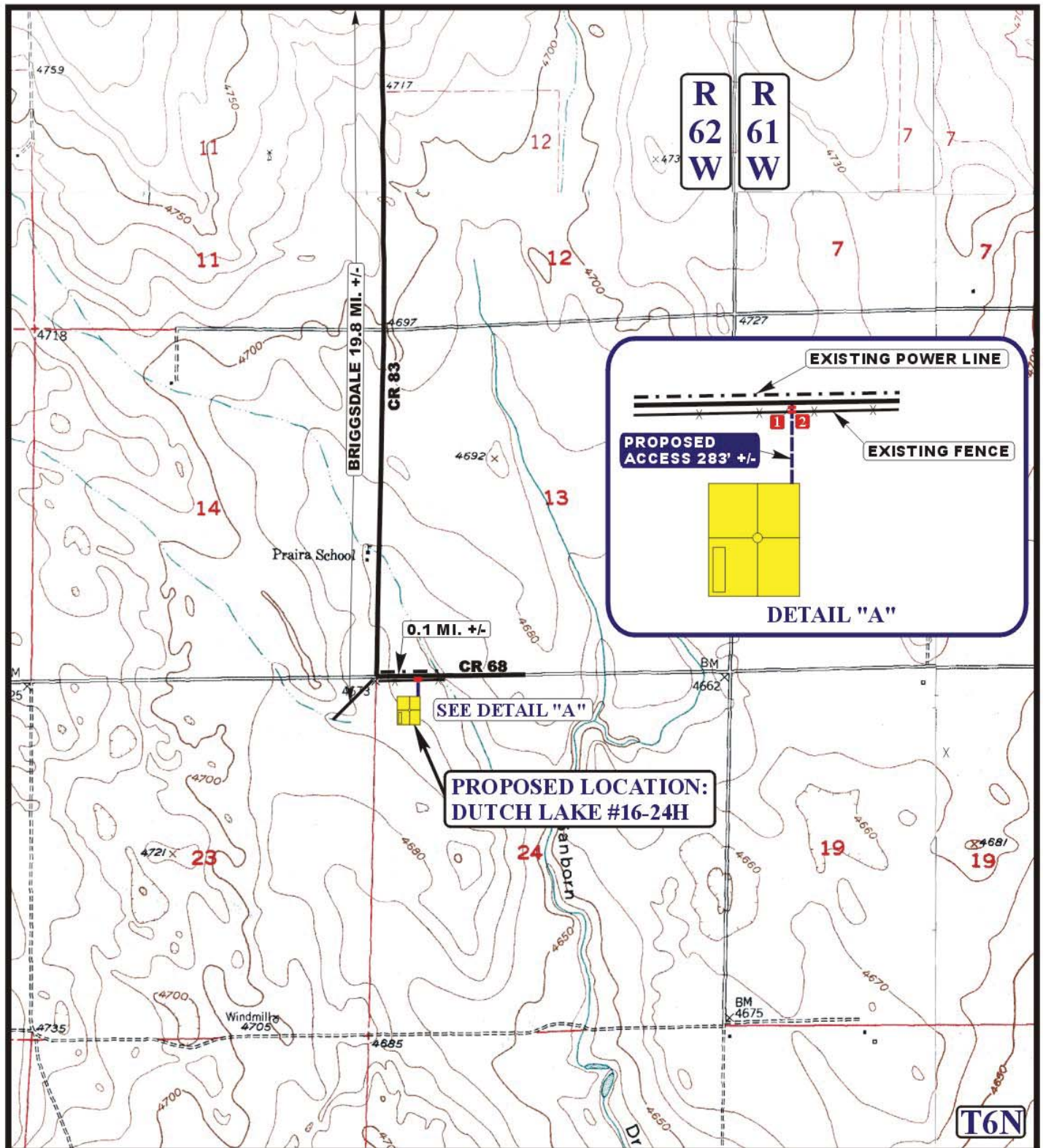
ACCESS ROAD  
MAP

02 01 11  
MONTH YEAR

SCALE: 1:100,000 DRAWN BY: C.A.G. REVISED: 00-00-00







# **LEGEND:**

- EXISTING ROAD
- PROPOSED ACCESS ROAD
- EXISTING POWER LINE
- EXISTING FENCE
- 1 18" CMP REQUIRED
- 2 INSTALL CATTLE GUARD



**Uintah Engineering & Land Surveying**  
 85 South 200 East Vernal, Utah 84078  
 (435) 789-1017 \* FAX (435) 789-1813



**EOG RESOURCES, INC.**

**DUTCH LAKE #16-24H**  
**SECTION 24, T6N, R62W, 6th P.M.**  
**501' FNL 501' FWL**

**ACCESS ROAD**  
**MAP**

**02 01 11**  
 MONTH DAY YEAR

SCALE: 1" = 2000' DRAWN BY: C.A.G. REVISED: 00-00-00

**B**  
**TOPO**