

T6N, R62W, 6th P.M.

EOG RESOURCES, INC.

1996 Alum. Cap.,
0.5' High Below Road
Lat: 40.480447°
Long: 104.280119°

2010 Alum. Cap.,
0.6' High Below Road
Lat: 40.480558°
Long: 104.270817°

R
62
W

R
61
W

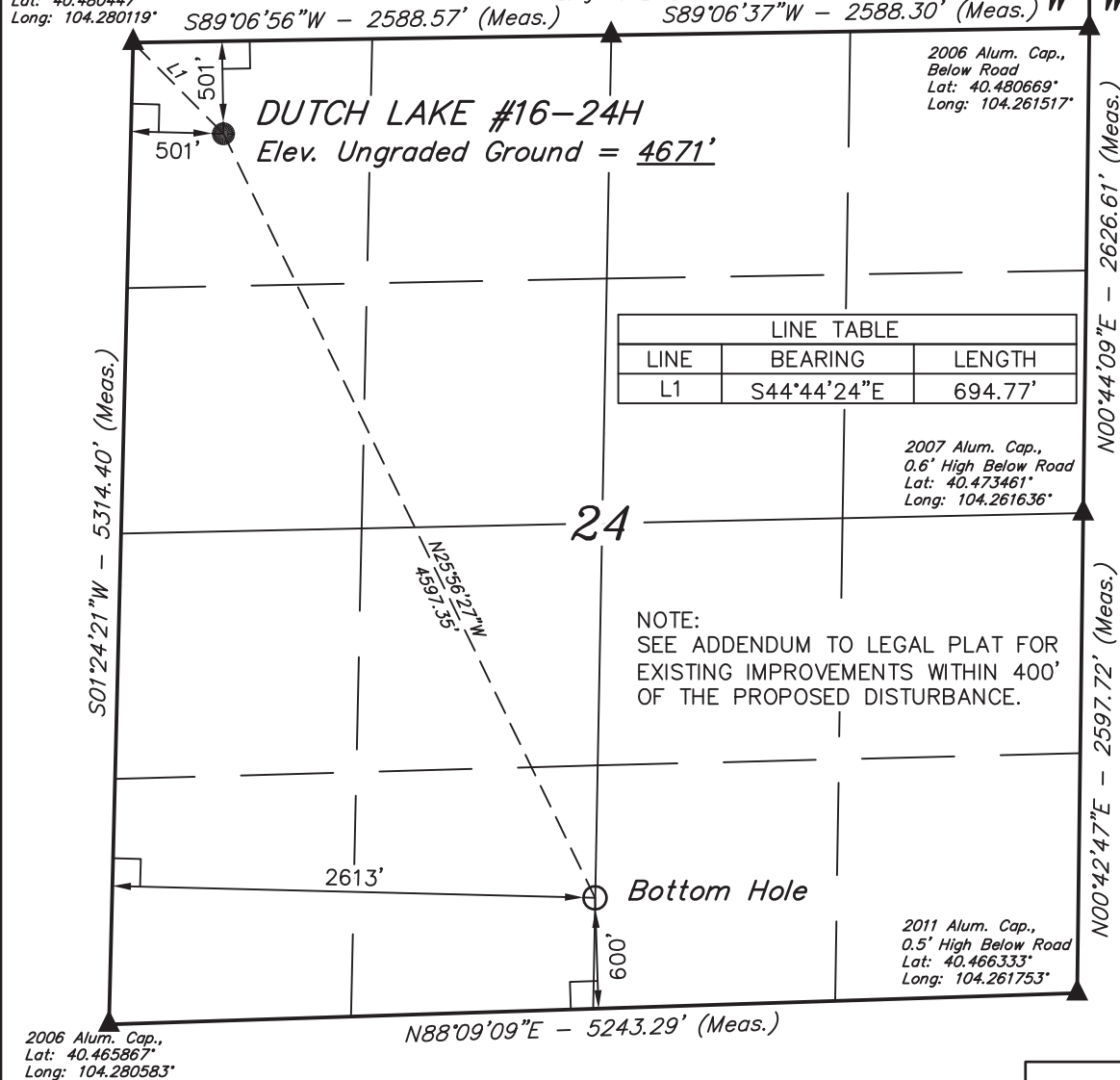
Well location, DUTCH LAKE #16-24H, located as shown in the NW 1/4 NW 1/4 of Section 24, T6N, R62W, 6th P.M., Weld County, Colorado.

BASIS OF ELEVATION

SPOT ELEVATION LOCATED AT THE NORTHEAST CORNER OF SECTION 24, T5N, R62W, 6th P.M. TAKEN FROM THE POINT OF ROCKS, QUADRANGLE, COLORADO, WELD COUNTY, 7.5 MINUTE QUAD (TOPOGRAPHIC MAP) PUBLISHED BY THE UNITED STATES DEPARTMENT OF THE INTERIOR, GEOLOGICAL SURVEY. SAID ELEVATION IS MARKED AS BEING 4530 FEET.

BASIS OF BEARINGS

BASIS OF BEARINGS IS A G.P.S. OBSERVATION.



SCALE

CERTIFICATE

THIS IS TO CERTIFY THAT THE ABOVE PLAT WAS PREPARED FROM FIELD NOTES OF ACTUAL SURVEYS MADE BY ME OR UNDER MY SUPERVISION AND THAT THE SAME ARE TRUE AND CORRECT TO THE BEST OF MY KNOWLEDGE AND BELIEF.

REGISTERED LAND SURVEYOR
REGISTRATION NO. 17492
STATE OF COLORADO

UINTAH ENGINEERING & LAND SURVEYING
85 SOUTH 200 EAST - VERNAL, UTAH 84078
(435) 789-1017

LEGEND:

- └─┘ = 90° SYMBOL
- = PROPOSED WELL HEAD.
- ▲ = SECTION CORNERS LOCATED.

| NAD 83 (TARGET BOTTOM HOLE) | NAD 83 (SURFACE LOCATION) |
|--|--|
| LATITUDE = 40°28'03.90" (40.467750) | LATITUDE = 40°28'44.74" (40.479094) |
| LONGITUDE = 104°16'16.07" (104.271131) | LONGITUDE = 104°16'42.10" (104.278361) |
| NAD 27 (TARGET BOTTOM HOLE) | NAD 27 (SURFACE LOCATION) |
| LATITUDE = 40°28'03.96" (40.467767) | LATITUDE = 40°28'44.80" (40.479111) |
| LONGITUDE = 104°16'14.25" (104.270625) | LONGITUDE = 104°16'40.28" (104.277856) |
| STATE PLANE NAD 83 | STATE PLANE NAD 83 |
| N: 1415610.32 E: 3341899.53 | N: 1419714.93 E: 3339831.43 |
| STATE PLANE NAD 27 | STATE PLANE NAD 27 |
| N: 415611.21 E: 2342049.26 | N: 419715.72 E: 2339981.13 |

| | | |
|-------------------------|-----------------------------|-------------------------|
| SCALE 1" = 1000' | DATE SURVEYED: 01-14-11 | DATE DRAWN: 01-24-11 |
| PARTY R.P. D.B. K.O. | REFERENCES G.L.O. PLAT | |
| WEATHER COOL | FILE EOG RESOURCES, INC. | |