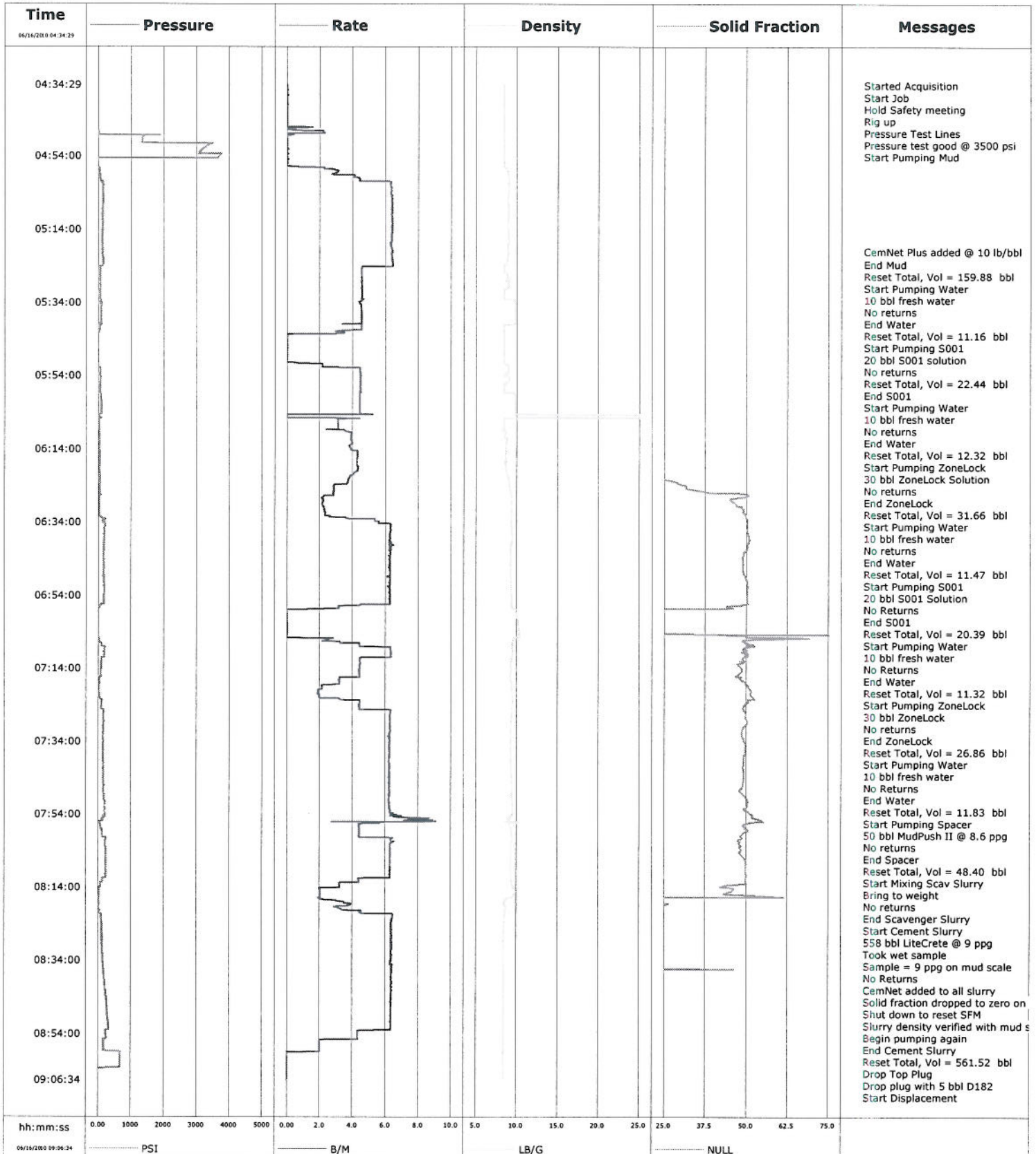


<b>Well</b>	SGU 8506A-36 B36	<b>Client</b>	Encana
<b>Field</b>	Story Gulch	<b>SIR No.</b>	B2K7-00096
<b>Engineer</b>	Dave Wanczyk	<b>Job Type</b>	9 5/8" Surface Casing
<b>Country</b>	United States	<b>Job Date</b>	06-16-2010





# Cementing Service Report

				Customer Encana		Job Number B2K7-00096		
Well SGU 8506A-36 B36			Location (legal)		Schlumberger Location Grand Junction, CO		Job Start Jun/16/2010	
Field Story Gulch		Formation Name/Type Shale		Deviation	Bit Size 14.8 in	Well MD 3037.0 ft	Well TVD 3037.0 ft	
County Garfield		State/Province Colorado		BHP	BHST 115 degF	BHCT 95 degF	Pore Press. Gradient	
Well Master 0631189580		API/UWI						
Rig Name Patterson 308		Drilled For Gas	Service Via Land		Casing/Liner			
			Depth, ft	Size, in	Weight, lb/ft	Grade	Thread	
Offshore Zone		Well Class New	Well Type Development		120.0	20.000	94.0	J55
			3037.0	9.630	36.0	J55	8RD	
Drilling Fluid Type Bentonite		Max. Density 8.60 lb/gal	Plastic Viscosity		Tubing/Drill Pipe			
			Depth,	Size,	Weight,	Grade	Thread	
Service Line Cementing		Job Type 9 5/8" Surface Casing						
Max. Allowed Tub. Press 3520 psi		Max. Allowed Ann. Press 2030 psi		WH Connection Single Cement head		Perforations/Open Hole		
				Top,	Bottom,	No. of Shots	Total Interval	
<b>Service Instructions</b> Cement 9 5/8" Surface Casing @ 3037ft w/ 50% Excess 160 bbls CemNET + in mud 10bbl Water 20bbl S001 Solution 10bbl Water 30 bbls ZONELOCK 10 BBL Water 20bbl S001 Solution 10bbl Water 30 bbls ZONELOCK				Treat Down Casing		Displacement 231.1 bbl	Packer Type	Packer Depth
				Tubing Vol.		Casing Vol. 234.8 bbl	Annular Vol. 386.0 bbl	Openhole Vol. 681.0 bbl
Casing/Tubing Secured <input checked="" type="checkbox"/>		1 Hole Vol. Circulated prior to Cement <input type="checkbox"/>		Casing Tools		Squeeze Job		
Lift Pressure 1503 psi		Shoe Type Guide		Squeeze Type				
Pipe Rotated <input type="checkbox"/>		Pipe Reciprocated <input type="checkbox"/>		Shoe Depth 3037.0 ft		Tool Type		
No. Centralizers		Top Plugs 1	Bottom Plugs 0	Stage Tool Type		Tool Depth		
Cement Head Type Single		Stage Tool Depth		Tail Pipe Size				
Job Scheduled For Jun/16/2010		Arrived on Location Jun/16/2010		Leave Location Jun/16/2010		Collar Type Diff-Fill		
				Collar Depth 2990.0 ft		Tail Pipe Depth		
						Sqz. Total Vol.		
Date	Time 24-hr clock	Treating Pressure PSI	Flow Rate B/M	Density LB/G	Solid Fraction NULL	Volume BBL	Message	
01/01/1970	00:00:00						Started Acquisition	
01/01/1970	00:00:00						Stopped Acquisition	
06/16/2010	04:34:29						Started Acquisition	
06/16/2010	04:34:29	-33	0.0	8.43	0	0.0		
06/16/2010	04:34:32						Start Job	
06/16/2010	04:34:32	-34	0.0	8.43	0	0.0		
06/16/2010	04:34:33						Hold Safety meeting	
06/16/2010	04:34:33						Rig up	
06/16/2010	04:34:33	-34	0.0	8.43	0	0.0		
06/16/2010	04:34:39						Pressure Test Lines	
06/16/2010	04:34:39	-33	0.0	8.43	0	0.0		
06/16/2010	04:34:41						Pressure test good @ 3500 psi	
06/16/2010	04:34:41	-33	0.0	8.43	0	0.0		
06/16/2010	04:34:42						Start Pumping Mud	
06/16/2010	04:34:42	-33	0.0	8.43	0	0.0		
06/16/2010	04:35:00	-34	0.0	8.43	0	0.0		
06/16/2010	04:36:40	-33	0.0	8.43	0	0.0		
06/16/2010	04:38:20	-33	0.0	8.43	0	0.1		
06/16/2010	04:40:00	-32	0.0	8.43	0	0.1		
06/16/2010	04:41:40	-33	0.0	8.43	0	0.1		
06/16/2010	04:43:20	-33	0.0	8.43	0	0.1		



Well			Field		Job Start		Customer		Job Number
SGU 8506A-36 B36			Story Gulch		Jun/16/2010		Encana		B2K7-00096
Date	Time 24-hr clock	Treating Pressure PSI	Flow Rate B/M	Density LB/G	Solid Fraction NULL	Volume BBL	Message		
06/16/2010	04:46:40	-31	0.0	8.44	0	0.5			
06/16/2010	04:50:00	1332	0.0	8.43	0	2.4			
06/16/2010	04:51:40	3254	0.0	8.43	0	2.4			
06/16/2010	04:53:20	3045	0.0	8.43	0	2.4			
06/16/2010	04:55:00	-18	0.0	8.43	0	2.5			
06/16/2010	04:56:40	-19	0.0	8.43	0	2.5			
06/16/2010	04:58:20	48	3.1	8.85	0	6.0			
06/16/2010	05:00:00	67	4.4	9.02	0	11.9			
06/16/2010	05:01:40	134	6.3	8.98	0	20.5			
06/16/2010	05:03:20	132	6.3	9.01	0	31.1			
06/16/2010	05:05:00	140	6.4	8.94	0	41.6			
06/16/2010	05:06:40	136	6.4	8.91	0	52.3			
06/16/2010	05:08:20	124	6.4	8.96	0	62.9			
06/16/2010	05:10:00	130	6.4	8.96	0	73.5			
06/16/2010	05:11:40	124	6.4	8.95	0	84.1			
06/16/2010	05:13:20	137	6.4	8.93	0	94.8			
06/16/2010	05:15:00	123	6.4	8.95	0	105.4			
06/16/2010	05:16:40	117	6.4	8.98	0	116.0			
06/16/2010	05:18:20	116	6.3	8.90	0	126.6			
06/16/2010	05:20:00						CemNet Plus added @ 10 lb/bbl		
06/16/2010	05:20:00	116	6.4	8.91	0	137.2			
06/16/2010	05:21:40	142	6.4	8.83	0	147.8			
06/16/2010	05:23:20	145	6.4	8.82	0	158.5			
06/16/2010	05:23:31						End Mud		
06/16/2010	05:23:31	145	6.4	8.82	0	159.7			
06/16/2010	05:23:33						Reset Total, Vol = 159.88 bbl		
06/16/2010	05:23:33	144	6.4	8.82	0	159.9			
06/16/2010	05:23:37						Start Pumping Water		
06/16/2010	05:23:37	142	6.4	8.82	0	160.3			
06/16/2010	05:23:59						10 bbl fresh water		
06/16/2010	05:23:59	128	6.4	8.44	0	162.7			
06/16/2010	05:24:05						No returns		
06/16/2010	05:24:05	128	6.4	8.48	0	163.3			
06/16/2010	05:25:00	60	4.5	8.42	0	167.9			
06/16/2010	05:25:41						End Water		
06/16/2010	05:25:41	61	4.6	8.42	0	171.0			
06/16/2010	05:25:42						Reset Total, Vol = 11.16 bbl		
06/16/2010	05:25:42	57	4.5	8.42	0	171.0			
06/16/2010	05:25:48						Start Pumping S001		
06/16/2010	05:25:48	58	4.6	8.42	0	171.5			
06/16/2010	05:25:50						20 bbl S001 solution		
06/16/2010	05:25:50	56	4.6	8.42	0	171.6			
06/16/2010	05:25:51						No returns		
06/16/2010	05:25:51	59	4.6	8.43	0	171.7			
06/16/2010	05:26:40	64	4.5	8.85	0	175.4			
06/16/2010	05:28:20	63	4.6	8.98	0	183.0			
06/16/2010	05:30:00	67	4.6	8.97	0	190.6			
06/16/2010	05:30:38						Reset Total, Vol = 22.44 bbl		
06/16/2010	05:30:38	59	4.6	8.48	0	193.5			
06/16/2010	05:30:40						End S001		
06/16/2010	05:30:40	63	4.6	8.46	0	193.6			
06/16/2010	05:30:45						Start Pumping Water		
06/16/2010	05:30:45	64	4.6	8.43	0	194.0			
06/16/2010	05:30:47						10 bbl fresh water		

Well			Field		Job Start		Customer		Job Number
SGU 8506A-36 B36			Story Gulch		Jun/16/2010		Encana		B2K7-00096
Date	Time 24-hr clock	Treating Pressure PSI	Flow Rate B/M	Density LB/G	Solid Fraction NULL	Volume BBL	Message		
06/16/2010	05:30:47	63	4.6	8.43	0	194.2			
06/16/2010	05:31:40	60	4.6	8.44	0	198.2			
06/16/2010	05:33:18						End Water		
06/16/2010	05:33:18	64	4.6	9.42	0	205.6			
06/16/2010	05:33:20						Reset Total, Vol = 12.32 bbl		
06/16/2010	05:33:20	62	4.6	9.63	0	205.8			
06/16/2010	05:33:21						Start Pumping ZoneLock		
06/16/2010	05:33:21	66	4.6	9.67	0	205.9			
06/16/2010	05:33:24						30 bbl ZoneLock Solution		
06/16/2010	05:33:24	70	4.5	9.73	0	206.1			
06/16/2010	05:33:25						No returns		
06/16/2010	05:33:25	76	4.5	9.73	0	206.2			
06/16/2010	05:35:00	79	4.5	9.78	0	213.3			
06/16/2010	05:36:40	80	4.5	9.79	0	220.8			
06/16/2010	05:38:20	85	4.5	9.79	0	228.4			
06/16/2010	05:40:00	40	3.3	9.79	0	235.9			
06/16/2010	05:40:21						End ZoneLock		
06/16/2010	05:40:21						Reset Total, Vol = 31.66 bbl		
06/16/2010	05:40:21	57	4.6	8.46	0	237.5			
06/16/2010	05:40:23						Start Pumping Water		
06/16/2010	05:40:23	58	4.5	8.45	0	237.6			
06/16/2010	05:40:25						10 bbl fresh water		
06/16/2010	05:40:25						No returns		
06/16/2010	05:40:25	58	4.5	8.45	0	237.8			
06/16/2010	05:41:40	53	4.5	8.43	0	243.4			
06/16/2010	05:43:20	-25	0.0	8.42	0	247.0			
06/16/2010	05:45:00	-25	0.0	8.43	0	247.1			
06/16/2010	05:46:40	-25	0.0	8.43	0	247.1			
06/16/2010	05:48:20	-24	0.0	8.43	0	247.1			
06/16/2010	05:50:00	-23	0.0	8.43	0	247.1			
06/16/2010	05:51:32						End Water		
06/16/2010	05:51:32	-1	2.2	8.98	0	248.9			
06/16/2010	05:51:33						Reset Total, Vol = 11.47 bbl		
06/16/2010	05:51:33	-1	2.2	8.98	0	248.9			
06/16/2010	05:51:40						Start Pumping S001		
06/16/2010	05:51:40	1	2.2	8.98	0	249.2			
06/16/2010	05:52:15						20 bbl S001 Solution		
06/16/2010	05:52:15						No Returns		
06/16/2010	05:52:15	69	4.5	8.97	0	251.2			
06/16/2010	05:53:20	67	4.5	8.94	0	256.0			
06/16/2010	05:55:00	70	4.5	9.00	0	263.5			
06/16/2010	05:56:16						End S001		
06/16/2010	05:56:16	62	4.5	8.50	0	269.2			
06/16/2010	05:56:18						Reset Total, Vol = 20.39 bbl		
06/16/2010	05:56:18	62	4.5	8.48	0	269.3			
06/16/2010	05:56:19						Start Pumping Water		
06/16/2010	05:56:19	62	4.5	8.47	0	269.4			
06/16/2010	05:56:22						10 bbl fresh water		
06/16/2010	05:56:22						No Returns		
06/16/2010	05:56:22	60	4.5	8.45	0	269.6			
06/16/2010	05:56:40	62	4.5	8.44	0	271.0			
06/16/2010	05:58:20	55	4.5	8.43	0	278.4			
06/16/2010	05:58:48						End Water		
06/16/2010	05:58:48	58	4.5	9.48	0	280.5			



Well			Field		Job Start		Customer		Job Number
SGU 8506A-36 B36			Story Gulch		Jun/16/2010		Encana		B2K7-00096
Date	Time 24-hr clock	Treating Pressure PSI	Flow Rate B/M	Density LB/G	Solid Fraction NULL	Volume BBL	Message		
06/16/2010	05:58:50	60	4.5	9.65	0	280.6			
06/16/2010	05:58:56						Start Pumping ZoneLock		
06/16/2010	05:58:56	71	4.4	9.72	0	281.1			
06/16/2010	05:58:58						30 bbl ZoneLock		
06/16/2010	05:58:58						No returns		
06/16/2010	05:58:58	78	4.4	9.72	0	281.2			
06/16/2010	06:00:00	79	4.4	9.78	0	285.8			
06/16/2010	06:01:40	89	4.4	9.79	0	293.2			
06/16/2010	06:03:20	90	4.4	9.79	0	300.6			
06/16/2010	06:05:00	7	0.0	25.00	0	306.5			
06/16/2010	06:05:56						End ZoneLock		
06/16/2010	06:05:56	23	3.1	8.44	0	307.4			
06/16/2010	06:05:57						Reset Total, Vol = 26.86 bbl		
06/16/2010	06:05:57	23	3.1	8.44	0	307.5			
06/16/2010	06:05:58						Start Pumping Water		
06/16/2010	06:05:58	23	3.1	8.44	0	307.5			
06/16/2010	06:06:03						10 bbl fresh water		
06/16/2010	06:06:03						No Returns		
06/16/2010	06:06:03	23	3.1	8.44	0	307.8			
06/16/2010	06:06:40	23	3.1	8.43	0	309.7			
06/16/2010	06:08:20	26	3.1	8.43	0	314.9			
06/16/2010	06:09:37						End Water		
06/16/2010	06:09:37	37	3.9	8.60	2	319.2			
06/16/2010	06:09:38						Reset Total, Vol = 11.83 bbl		
06/16/2010	06:09:38	39	3.9	8.60	2	319.3			
06/16/2010	06:09:40						Start Pumping Spacer		
06/16/2010	06:09:40	38	3.9	8.60	2	319.4			
06/16/2010	06:09:59						50 bbl MudPush II @ 8.6 ppg		
06/16/2010	06:09:59	38	3.9	8.59	2	320.7			
06/16/2010	06:10:00						No returns		
06/16/2010	06:10:00	38	3.9	8.59	2	320.8			
06/16/2010	06:11:40	40	3.9	8.76	6	327.3			
06/16/2010	06:13:20	35	3.8	8.65	2	333.8			
06/16/2010	06:15:00	43	4.3	8.62	3	340.5			
06/16/2010	06:16:40	46	4.3	8.61	3	347.6			
06/16/2010	06:18:20	37	4.3	8.61	3	354.7			
06/16/2010	06:20:00	47	4.3	8.64	3	361.9			
06/16/2010	06:21:23						End Spacer		
06/16/2010	06:21:23	54	3.9	8.88	16	367.6			
06/16/2010	06:21:25						Reset Total, Vol = 48.40 bbl		
06/16/2010	06:21:25	53	3.9	8.88	16	367.7			
06/16/2010	06:21:27						Start Mixing Scav Slurry		
06/16/2010	06:21:27	57	3.9	8.89	17	367.8			
06/16/2010	06:21:29						Bring to weight		
06/16/2010	06:21:29	51	3.9	8.90	17	368.0			
06/16/2010	06:21:33						No returns		
06/16/2010	06:21:33	51	3.9	8.91	18	368.2			
06/16/2010	06:21:40	56	3.9	8.91	19	368.7			
06/16/2010	06:23:20	65	3.7	9.06	29	374.9			
06/16/2010	06:25:00	39	2.9	9.15	32	380.1			
06/16/2010	06:26:40	73	2.8	9.35	51	384.8			
06/16/2010	06:28:20	35	2.2	9.37	46	388.6			
06/16/2010	06:30:00	33	2.2	9.33	49	392.2			
06/16/2010	06:30:03						End Scavenger Slurry		

Well			Field		Job Start		Customer		Job Number
SGU 8506A-36 B36			Story Gulch		Jun/16/2010		Encana		B2K7-00096
Date	Time 24-hr clock	Treating Pressure PSI	Flow Rate B/M	Density LB/G	Solid Fraction NULL	Volume BBL	Message		
06/16/2010	06:30:05						Start Cement Slurry		
06/16/2010	06:30:05	34	2.2	9.33	49	392.4			
06/16/2010	06:31:40	34	2.4	9.35	49	396.0			
06/16/2010	06:33:20	224	5.4	9.34	50	401.2			
06/16/2010	06:34:03						558 bbl LiteCrete @ 9 ppg		
06/16/2010	06:34:03						Took wet sample		
06/16/2010	06:34:03	136	5.6	9.35	50	405.1			
06/16/2010	06:34:04						Sample = 9 ppg on mud scale		
06/16/2010	06:34:04						No Returns		
06/16/2010	06:34:04	136	5.6	9.35	50	405.1			
06/16/2010	06:35:00	200	6.3	9.36	50	410.8			
06/16/2010	06:36:40	187	6.3	9.42	50	421.3			
06/16/2010	06:38:20	197	6.3	9.45	51	431.8			
06/16/2010	06:40:00	190	6.3	9.33	51	442.2			
06/16/2010	06:41:40	167	6.3	9.27	50	452.7			
06/16/2010	06:43:20	164	6.3	9.30	49	463.2			
06/16/2010	06:45:00	170	6.3	9.29	49	473.6			
06/16/2010	06:45:29						CemNet added to all slurry		
06/16/2010	06:45:29	184	6.3	9.29	49	476.7			
06/16/2010	06:46:40	177	6.3	9.26	49	484.1			
06/16/2010	06:48:20	171	6.3	9.28	49	494.5			
06/16/2010	06:50:00	175	6.3	9.33	50	505.0			
06/16/2010	06:51:40	195	6.2	9.34	50	515.4			
06/16/2010	06:53:20	199	6.2	9.35	50	525.8			
06/16/2010	06:55:00	171	6.3	9.38	50	536.3			
06/16/2010	06:56:40	87	4.6	9.37	49	546.7			
06/16/2010	06:58:20	-17	0.0	9.86	1	550.8			
06/16/2010	07:00:00	-22	0.0	10.02	1	550.8			
06/16/2010	07:01:40	-22	0.0	10.16	1	550.8			
06/16/2010	07:03:20	-23	0.0	10.27	1	550.8			
06/16/2010	07:03:40						Solid fraction dropped to zero on readout		
06/16/2010	07:03:40						Shut down to reset SFM		
06/16/2010	07:03:40	-23	0.0	10.30	1	550.9			
06/16/2010	07:05:00						Slurry density verified with mud scale		
06/16/2010	07:05:00	-21	0.0	10.41	45	550.9			
06/16/2010	07:06:40	34	2.2	9.54	50	553.1			
06/16/2010	07:07:00						Begin pumping again		
06/16/2010	07:07:00	55	3.2	9.54	50	554.1			
06/16/2010	07:08:20	207	6.3	9.50	50	560.0			
06/16/2010	07:10:00	180	6.3	9.50	50	570.6			
06/16/2010	07:11:40	103	4.5	9.37	49	580.2			
06/16/2010	07:13:20	88	4.5	9.29	48	587.6			
06/16/2010	07:15:00	86	4.4	9.28	48	595.0			
06/16/2010	07:16:40	46	3.2	9.22	48	602.2			
06/16/2010	07:18:20	51	3.2	9.41	50	607.5			
06/16/2010	07:20:00	20	1.9	9.40	51	611.3			
06/16/2010	07:21:40	32	2.0	9.49	52	614.5			
06/16/2010	07:23:20	114	4.4	9.51	50	619.8			
06/16/2010	07:25:00	82	4.4	9.42	49	627.2			
06/16/2010	07:26:40	163	6.3	9.38	50	637.0			
06/16/2010	07:28:20	168	6.3	9.34	50	647.4			
06/16/2010	07:30:00	168	6.3	9.31	49	657.9			
06/16/2010	07:31:40	152	6.3	9.29	49	668.3			
06/16/2010	07:33:20	148	6.2	9.29	49	678.7			



Well			Field		Job Start		Customer		Job Number
SGU 8506A-36 B36			Story Gulch		Jun/16/2010		Encana		B2K7-00096
Date	Time 24-hr clock	Treating Pressure PSI	Flow Rate B/M	Density LB/G	Solid Fraction NULL	Volume BBL	Message		
06/16/2010	07:36:40	152	6.2	9.28	50	699.6			
06/16/2010	07:38:20	147	6.2	9.31	49	710.0			
06/16/2010	07:40:00	162	6.2	9.29	49	720.3			
06/16/2010	07:41:40	154	6.2	9.33	49	730.7			
06/16/2010	07:43:20	167	6.2	9.36	49	741.1			
06/16/2010	07:45:00	166	6.3	9.41	49	751.5			
06/16/2010	07:46:40	172	6.2	9.44	49	761.9			
06/16/2010	07:48:20	163	6.2	9.41	49	772.3			
06/16/2010	07:50:00	182	6.2	9.42	50	782.7			
06/16/2010	07:51:40	201	6.2	9.48	50	793.0			
06/16/2010	07:53:20	199	6.3	9.52	51	803.5			
06/16/2010	07:55:00	176	7.5	9.02	52	814.3			
06/16/2010	07:56:40	60	4.4	9.22	50	825.9			
06/16/2010	07:58:20	120	4.4	9.37	50	833.3			
06/16/2010	08:00:00	133	4.4	9.40	48	840.6			
06/16/2010	08:01:40	218	6.5	9.33	48	850.3			
06/16/2010	08:03:20	237	6.3	9.34	48	860.8			
06/16/2010	08:05:00	247	6.3	9.32	48	871.3			
06/16/2010	08:06:40	230	6.3	9.30	50	881.8			
06/16/2010	08:08:20	243	6.3	9.29	50	892.2			
06/16/2010	08:10:00	243	6.3	9.31	50	902.7			
06/16/2010	08:11:40	137	4.5	9.33	50	913.1			
06/16/2010	08:13:20	81	3.2	9.43	48	919.8			
06/16/2010	08:15:00	35	2.0	9.88	46	924.3			
06/16/2010	08:16:40	31	2.0	9.48	58	927.7			
06/16/2010	08:17:00						End Cement Slurry		
06/16/2010	08:17:00	27	2.0	9.26	1	928.3			
06/16/2010	08:17:26						Reset Total, Vol = 561.52 bbl		
06/16/2010	08:17:26	28	2.0	8.72	1	929.2			
06/16/2010	08:17:55						Drop Top Plug		
06/16/2010	08:17:55	30	3.1	8.52	1	930.5			
06/16/2010	08:17:56						Drop plug with 5 bbl D182		
06/16/2010	08:17:56	29	3.1	8.52	1	930.6			
06/16/2010	08:18:20	29	3.5	8.52	1	932.0			
06/16/2010	08:18:22						Start Displacement		
06/16/2010	08:18:22	29	3.5	8.50	1	932.1			
06/16/2010	08:20:00	17	3.3	8.62	20	937.7			
06/16/2010	08:21:40	94	6.4	8.56	11	945.3			
06/16/2010	08:23:20	102	6.4	8.50	6	956.0			
06/16/2010	08:25:00						231 bbl Fresh water		
06/16/2010	08:25:00	110	6.4	8.44	4	966.6			
06/16/2010	08:26:00						No returns		
06/16/2010	08:26:00	119	6.4	8.41	5	973.0			
06/16/2010	08:26:40	118	6.4	8.40	4	977.2			
06/16/2010	08:28:20	131	6.4	8.38	3	987.8			
06/16/2010	08:28:40						Slow returns @ 60 bbl away		
06/16/2010	08:28:40	118	6.3	8.35	3	990.0			
06/16/2010	08:30:00	136	6.4	8.37	3	998.5			
06/16/2010	08:31:00						No returns @ 70 bbl away		
06/16/2010	08:31:00	141	6.4	8.39	4	1004.8			
06/16/2010	08:31:40	142	6.4	8.38	3	1009.1			
06/16/2010	08:33:20	147	6.4	8.38	3	1019.7			
06/16/2010	08:35:00	156	6.3	8.35	3	1030.3			
06/16/2010	08:36:40	176	6.4	8.45	1	1040.9			

Well			Field		Job Start		Customer		Job Number
SGU 8506A-36 B36			Story Gulch		Jun/16/2010		Encana		B2K7-00096
Date	Time 24-hr clock	Treating Pressure PSI	Flow Rate B/M	Density LB/G	Solid Fraction NULL	Volume BBL	Message		
06/16/2010	08:36:41	180	6.4	8.45	1	1041.0			
06/16/2010	08:38:08						No returns @ 115 bbl away		
06/16/2010	08:38:08	183	6.4	8.45	1	1050.2			
06/16/2010	08:38:20	196	6.4	8.45	1	1051.5			
06/16/2010	08:40:00	213	6.4	8.45	1	1062.1			
06/16/2010	08:41:40	229	6.4	8.45	1	1072.8			
06/16/2010	08:43:20	245	6.4	8.45	1	1083.4			
06/16/2010	08:45:00	260	6.3	8.45	1	1094.0			
06/16/2010	08:46:40	269	6.3	8.45	1	1104.6			
06/16/2010	08:48:20	294	6.3	8.45	1	1115.2			
06/16/2010	08:50:00	295	6.3	8.45	1	1125.7			
06/16/2010	08:51:40	308	6.3	8.45	1	1136.3			
06/16/2010	08:53:20	243	4.3	8.45	1	1146.5			
06/16/2010	08:55:00	250	4.3	8.45	1	1153.7			
06/16/2010	08:56:40	161	2.0	8.45	1	1158.6			
06/16/2010	08:58:00						Pressure @ 180 psi just before bump		
06/16/2010	08:58:00	181	2.0	8.45	1	1161.3			
06/16/2010	08:58:20	169	2.0	8.45	1	1162.0			
06/16/2010	09:00:00	678	0.0	8.45	1	1163.6			
06/16/2010	09:00:38						End Displacement		
06/16/2010	09:00:38	676	0.0	8.45	1	1163.6			
06/16/2010	09:00:57						Bump Top Plug		
06/16/2010	09:00:57	676	0.0	8.45	1	1163.6			
06/16/2010	09:00:58						Bump plug to 650 psi		
06/16/2010	09:00:58	675	0.0	8.45	1	1163.6			
06/16/2010	09:01:40	675	0.0	8.45	1	1163.6			
06/16/2010	09:03:20	671	0.0	8.45	1	1163.6			
06/16/2010	09:05:00	-32	0.0	8.45	1	1163.6			
06/16/2010	09:06:27						Float held, 1 bbl back		
06/16/2010	09:06:27						No returns through most of job		
06/16/2010	09:06:27	-32	0.0	8.45	1	1163.6			
06/16/2010	09:06:28						No cement to surface		
06/16/2010	09:06:28	-31	0.0	8.45	1	1163.6			
06/16/2010	09:06:30						End Job		
06/16/2010	09:06:30	-32	0.0	8.45	1	1163.6			

### Post Job Summary

Average Pump Rates, bbl/min				Volume of Fluid Injected, bbl			
Slurry	N2	Mud	Maximum Rate	Total Slurry	Mud	Spacer	N2
5.5		6.0	6.5	558.0	160.0	200.0	
Treating Pressure Summary, psi				Breakdown Fluid			
Maximum	Final	Average	Bump Plug to	Breakdown	Type	Volume	Density
3500	0	200	650				
Avg. N2 Percent		Designed Slurry Volume	Displacement	Mix Water Temp	Cement Circulated to Surface?		Volume
		558.0 bbl	231.0 bbl	70 degF	Washed Thru Perfs		To
Customer or Authorized Representative			Schlumberger Supervisor		Circulation Lost	<input checked="" type="checkbox"/>	Job Completed <input checked="" type="checkbox"/>
Floyd Roberts			Dave Wanczyk		-		-