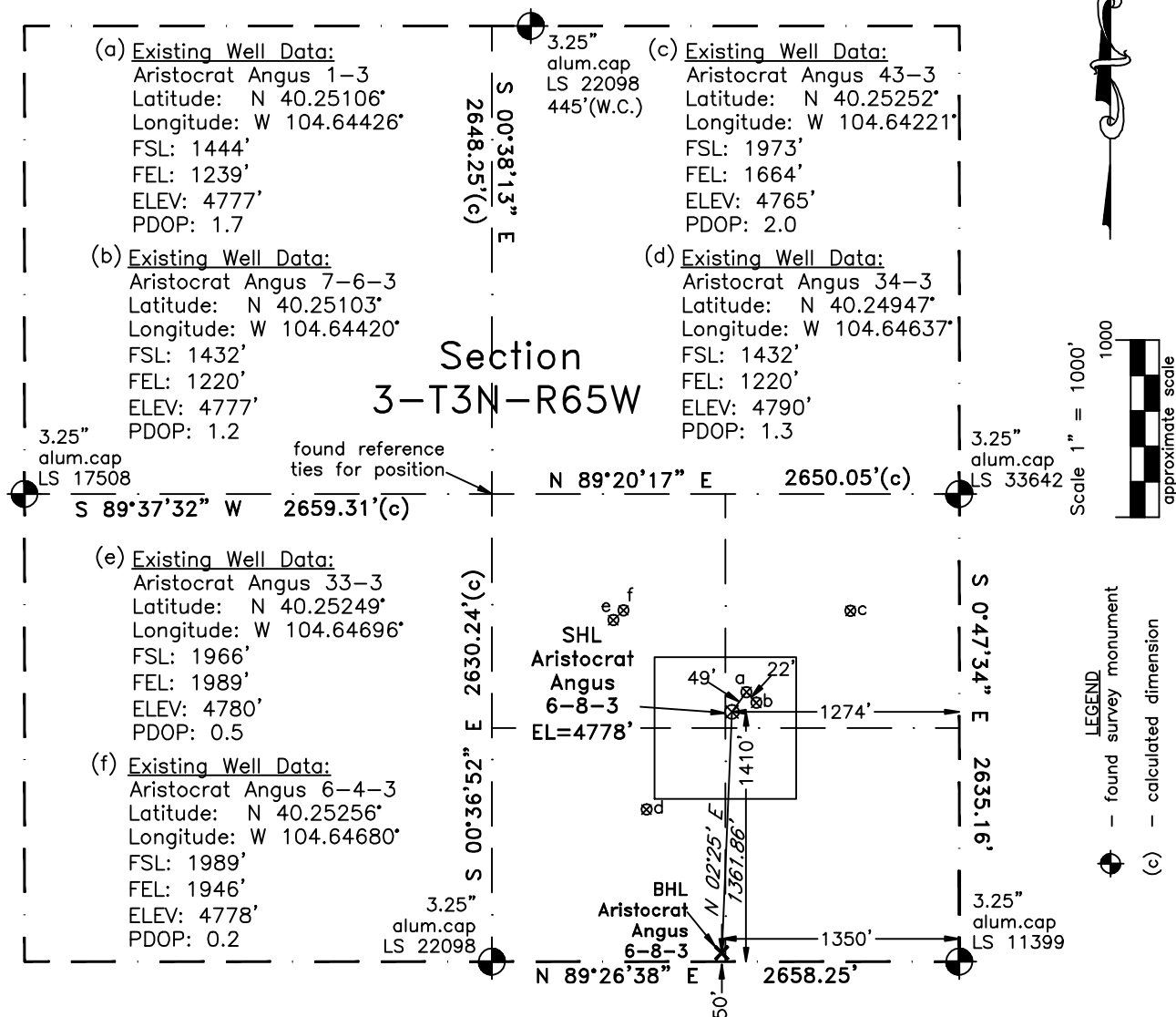


PLS Group, LLC  
109 Coronado Ct. - Bldg. 7  
Fort Collins, Colorado 80525

# WELL LOCATION CERTIFICATE

THIS MAP DOES NOT  
REPRESENT A BOUNDARY SURVEY



In accordance with a request from Dave Bale of EnCana Oil & Gas (USA) Inc., PLS Group, LLC has determined the location of the **Aristocrat Angus 6-8-3** well site to be SHL: 1410' FSL and 1274' FEL, (BHL 50' FSL and 1350' FEL) as measured at ninety (90) degrees from the section lines of Section 3, Township 3 North, Range 65 West, 6th Principal Meridian, County of Weld, CO.

## Proposed Surface Hole Data:

Latitude: N 40.25097° BHL(40.24724°)  
Longitude: W 104.64439° BHL(104.64464°)  
PDOP: 1.1

Nearest: Building 828' southwest Above Ground Utility 4740' northeast  
Public Road 3520' southwest Railroad 35,180' northwest  
Property Line 588' southwest Well Window: SHL is 306' inside  
Existing Well: Aristocrat Angus 1-3 49' northeast

## Notes:

- 1) Bearings and distances based on NAD 83 Colorado North State Plane Coordinates using RTK GPS observations taken 2/1/11 by operator Craig Burke.
- 2) Conversion factor to ground (1.000274972).
- 3) Elevations based on NAVD 88 GPS heights and Geoid 2003 corrections.
- 4) See improvement map for visible improvements within 400 feet.
- 5) The surface use is agricultural field.

**NOTICE:** According to Colorado law you must commence any legal action based upon any defect in this W.L.C. within three years after you first discover such defect. In no event may any action based upon any defect in this W.L.C. be commenced more than ten years from this said date of the certification shown hereon.

I hereby certify that this Well Location Certificate was prepared by me or under my direct supervision on 2/2/11 for and on behalf of EnCana Oil & Gas (USA) Inc. That it is not a Land Survey Plat or an Improvement Survey Plat and that it is not to be relied upon for establishment of fences, buildings, or other future improvement lines.

John Robert McGehee LS#38219  
Well: Aristocrat Angus 6-8-3 WLC