

Building 875' southwest
Public Road 3566' southwest
Property Line 631' southwest
Above Ground Utility 4695' northeast
Railroad 35,182' northwest

Location Drawing

Existing Well Data:

Aristocrat Angus 1-3
Latitude: N 40.25106°
Longitude: W 104.64426°
FSL: 1444'
FEL: 1239'
ELEV: 4777'
PDOP: 1.7

Existing Well Data:

Aristocrat Angus 7-6-3
Latitude: N 40.25103°
Longitude: W 104.64420°
FSL: 1432'
FEL: 1220'
ELEV: 4777'
PDOP: 1.2

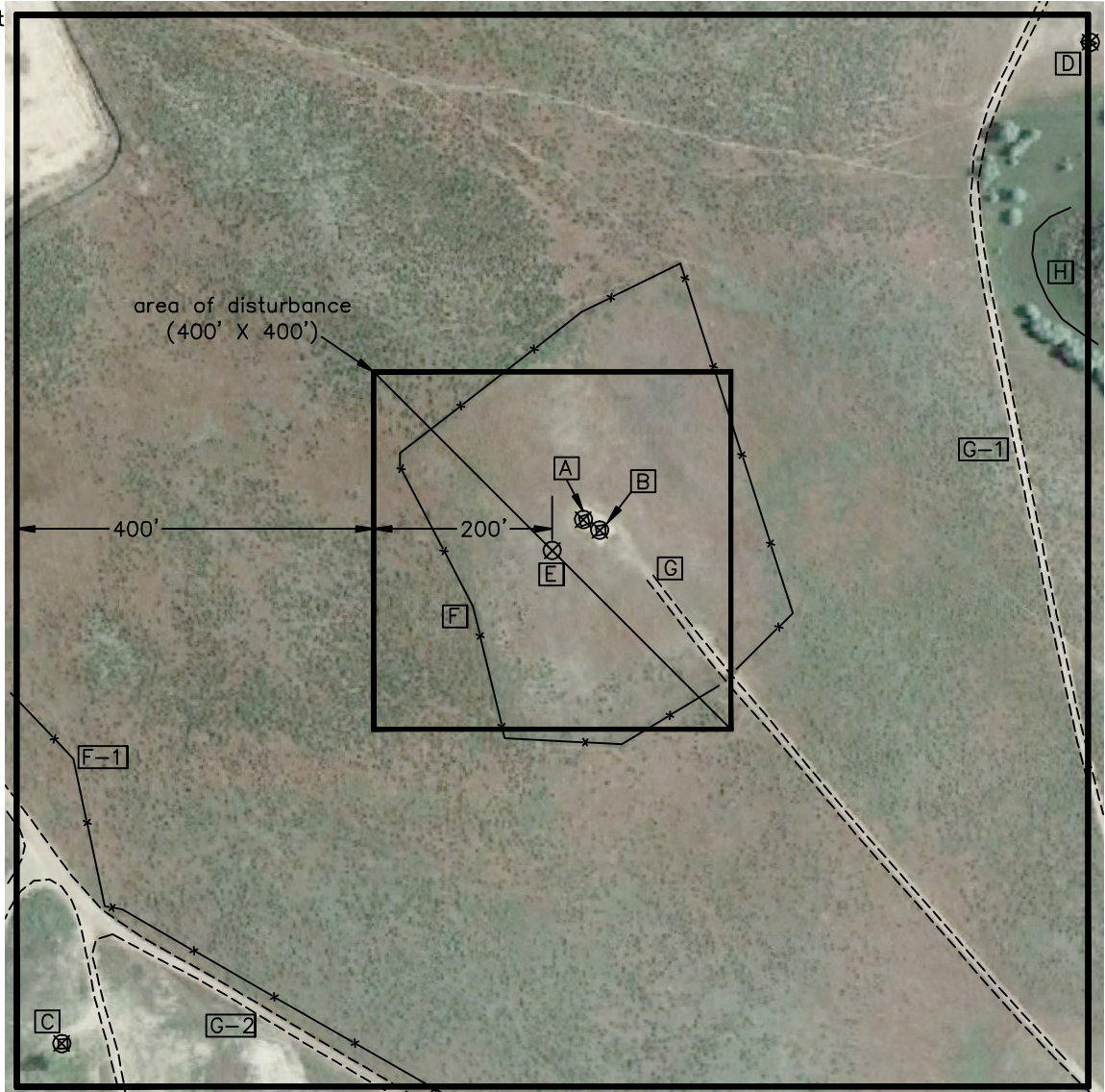
Existing Well Data:

Aristocrat Angus 43-3
Latitude: N 40.25252°
Longitude: W 104.64221°
FSL: 1973'
FEL: 1664'
ELEV: 4765'
PDOP: 2.0

Existing Well Data:

Aristocrat Angus 34-3
Latitude: N 40.24947°
Longitude: W 104.64637°
FSL: 1432'
FEL: 1220'
ELEV: 4790'
PDOP: 1.3

Field observations
taken on 2/1/11 by
operator Craig Burke.



**Distances listed below
are measured from the
existing Aristocrat Angus 1-3**

- [A] existing Aristocrat Angus 1-3
- [B] existing Aristocrat Angus 7-6-3 22' southeast
- [C] existing Aristocrat Angus 34-3 828' southwest
- [D] existing Aristocrat Angus 43-3 780' northeast
- [E] proposed Aristocrat Angus 6-8-3 49' northeast
- [F] fence 157' southwest
- [F-1] approximate property line & fence 631' southwest
- [G] dirt drive 100' southeast
- [G-1] dirt drive 491' northeast
- [G-2] dirt drive 652' southwest
- [H] apparent wetlands 576' northeast

Aristocrat Angus NESE Pad Location Drawing

**Improvements extending
400' from disturbance**

Township 3 North, Range 65 West,
Section 3: NE $\frac{1}{4}$ SE $\frac{1}{4}$
Weld County, Colorado



Scale: 1"=200'

February 2, 2011

PLS Group, LLC

109 Coronado Ct. - Bldg. 7, Fort Collins, Colorado 80525
Phone: (970) 227-1312