

T7N, R93W, 6th P.M.

QUICKSILVER RESOURCES, INC.

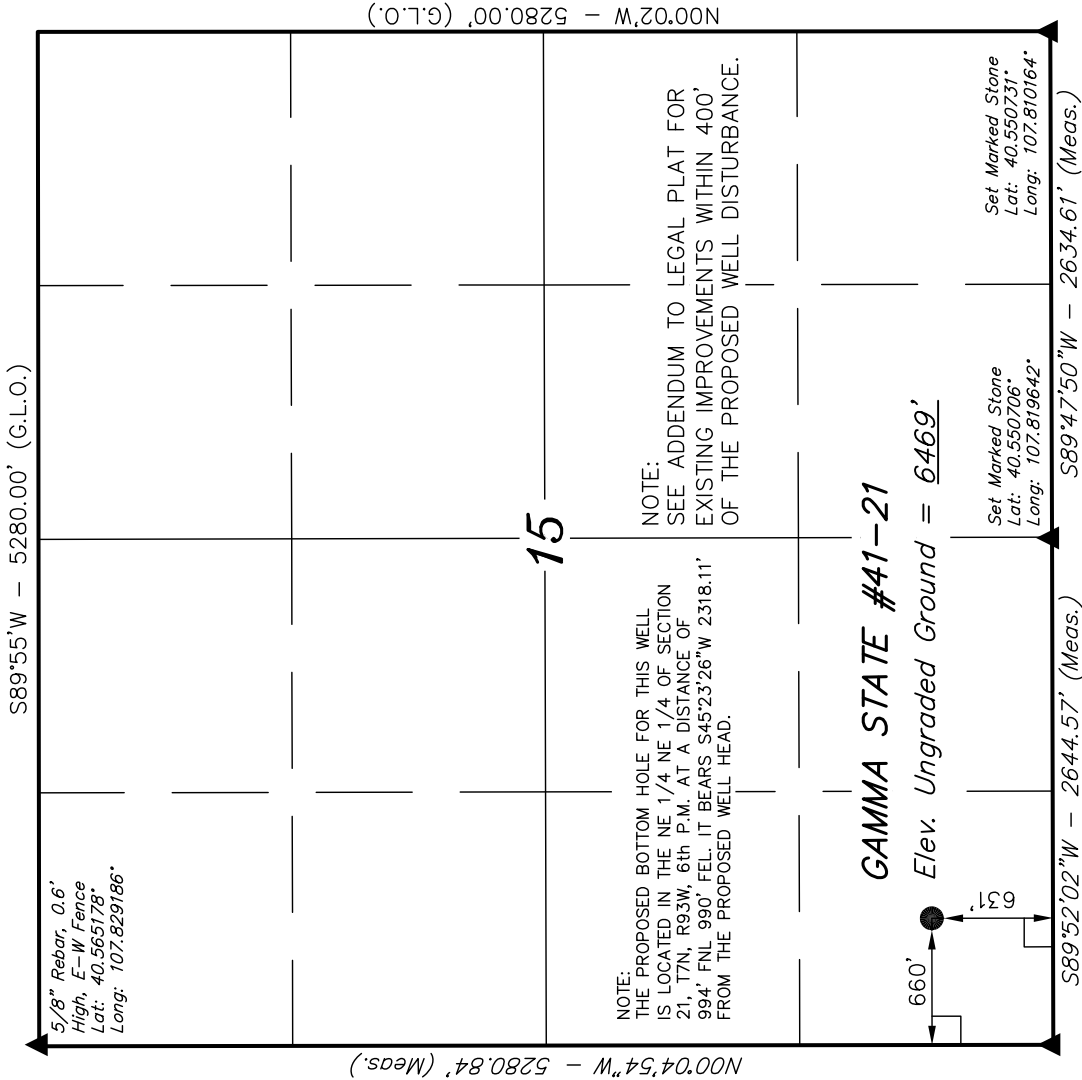
Well location, GAMMA STATE #41-21 (SURFACE LOCATION), located as shown in the SW 1/4 SW 1/4 of Section 15, T7N, R93W, 6th P.M., Moffat County, Colorado.

BASIS OF ELEVATION

SPOT ELEVATION LOCATED AT THE NORTHEAST CORNER OF SECTION 10, T6N, R93W, 6th P.M. TAKEN FROM THE HORSE GULCH QUADRANGLE, COLORADO, MOFFAT COUNTY, 7.5 MINUTE QUAD (TOPOGRAPHIC MAP) PUBLISHED BY THE UNITED STATES DEPARTMENT OF THE INTERIOR, GEOLOGICAL SURVEY. SAID ELEVATION IS MARKED AS BEING 6246 FEET.

BASIS OF BEARINGS

BASIS OF BEARINGS IS A G.P.S. OBSERVATION.



LEGEND:

— = 90° SYMBOL

● = PROPOSED WELL HEAD.

▲ = SECTION CORNERS LOCATED.

PDOP = 1.6	
NAD 83 (SURFACE LOCATION)	
LATITUDE = 40°33'08.72" (40.552422)	
LONGITUDE = 107°49'36.42" (107.826783)	
NAD 27 (SURFACE LOCATION)	
LATITUDE = 40°33'08.83" (40.552453)	
LONGITUDE = 107°49'34.15" (107.826153)	

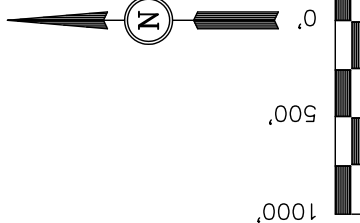
REVISED: 03-15-11 M.D.

UTAH ENGINEERING & LAND SURVEYING
85 SOUTH 200 EAST - VERNAL, UTAH 84078
(435) 789-1017

SCALE	1" = 1000'	DATE SURVEYED:	02-14-11	DATE DRAWN:	02-16-11
PARTY	G.S. G.B. B.H. M.D.	REFERENCES	G.L.O. PLAT		
WEATHER	COLD	FILE			
					QUICKSILVER RESOURCES, INC.

N00°04'54"W - 5280.84' (Meas.)

S89°55'W - 5280.00' (G.L.O.)



NOTE:
THE PROPOSED BOTTOM HOLE FOR THIS WELL IS LOCATED IN THE NE 1/4 NE 1/4 OF SECTION 21, T7N, R93W, 6th P.M. AT A DISTANCE OF 994' FNL 990' FEL. IT BEARS S45°23'26"W 2318.11' FROM THE PROPOSED WELL HEAD.

GAMMA STATE #41-21

Elev. Ungraded Ground = 6469'

Set Marked Stone
Lat: 40.550706°
Long: 107.819642°

Set Marked Stone
Lat: 40.550731°
Long: 107.810164°

S89°52'02"W - 2644.57' (Meas.)

S89°47'50"W - 2634.61' (Meas.)

5/8" Rebar, 0.7'
High, E-W Fence
Lat: 40.550686°
Long: 107.829156°

CERTIFICATE

THIS IS TO CERTIFY THAT THE ABOVE PLAT WAS PREPARED FROM FIELD NOTES OF ACTUAL SURVEYS MADE BY ME OR UNDER MY SUPERVISION AND THAT THE SAME ARE TRUE AND CORRECT TO THE BEST OF MY KNOWLEDGE AND BELIEF.

REGISTERED LAND SURVEYOR
REGISTRATION NO. 17492
STATE OF COLORADO

T7N, R93W, 6th P.M.

QUICKSILVER RESOURCES, INC.

Well location, GAMMA STATE #41-21 (BOTTOM HOLE), located as shown in the NE 1/4 NE 1/4 of Section 21, T7N, R93W, 6th P.M., Moffat County, Colorado.

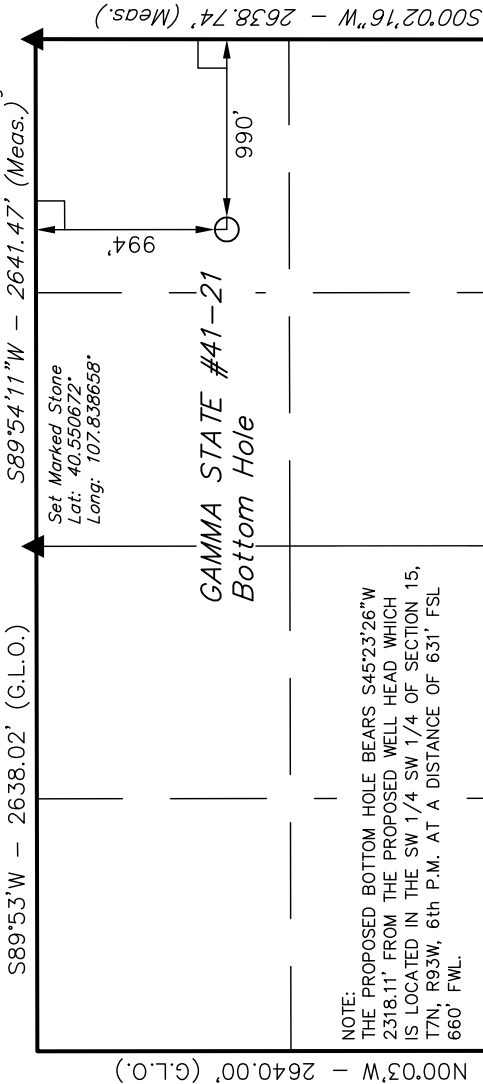
BASIS OF ELEVATION

SPOT ELEVATION LOCATED AT THE NORTHEAST CORNER OF SECTION 10, T6N, R93W, 6th P.M. TAKEN FROM THE HORSE GULCH QUADRANGLE, COLORADO, MOFFAT COUNTY, 7.5 MINUTE QUAD (TOPOGRAPHIC MAP) PUBLISHED BY THE UNITED STATES DEPARTMENT OF THE INTERIOR, GEOLOGICAL SURVEY. SAID ELEVATION IS MARKED AS BEING 6246 FEET.

BASIS OF BEARINGS

BASIS OF BEARINGS IS A G.P.S. OBSERVATION.

5/8" Rebar, 0.7' High, E-W Fence
Lat: 40.550686°
Long: 107.829156°



21

2005 Private Alum. Cap.
0.5' Above Ground,
PLS#23875
Lat: 40.543406°
Long: 107.848106°

5/8" Rebar,
Lat: 40.543444°
Long: 107.829158°

2005 Private Alum. Cap.
0.4' Above Ground
PLS#23875
Lat: 40.536161°
Long: 107.848103°

S89°59'46"W - 2634.41' (Meas.)

Set Marked Stone,
Steel Post
Lat: 40.536164°
Long: 107.838628°

S89°43'36"W - 2640.54' (Meas.)

Set Marked Stone,
Steel Post
Lat: 40.536200°
Long: 107.829131°

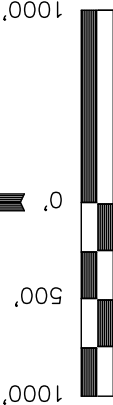
LEGEND:

— = 90° SYMBOL

● = PROPOSED WELL HEAD.

▲ = SECTION CORNERS LOCATED.

NAD 83 (TARGET BOTTOM HOLE)	
LATITUDE =	40°32'52.63" (40.547953)
LONGITUDE =	107°49'57.79" (107.832719)
NAD 27 (TARGET BOTTOM HOLE)	
LATITUDE =	40°32'52.74" (40.547983)
LONGITUDE =	107°49'55.52" (107.832089)



S C A L E

CERTIFICATE

THIS IS TO CERTIFY THAT THE ABOVE PLAT WAS PREPARED, FROM FIELD NOTES OF ACTUAL SURVEYS MADE BY ME OR UNDER MY SUPERVISION AND THAT THE SAME ARE TRUE AND CORRECT TO THE BEST OF MY KNOWLEDGE AND BELIEF.

REGISTERED LAND SURVEYOR
REGISTRATION NO. 17492
STATE OF COLORADO

REVISED: 03-15-11 M.D.

UINTAH ENGINEERING & LAND SURVEYING
85 SOUTH 200 EAST - VERNAL, UTAH 84078
(435) 789-1017

SCALE 1" = 1000'	DATE SURVEYED: 02-14-11	DATE DRAWN: 02-16-11
PARTY G.S. G.B. B.H. M.D.	REFERENCES G.L.O. PLAT	
WEATHER COLD	FILE	QUICKSILVER RESOURCES, INC.