

T7N, R93W, 6th P.M.

QUICKSILVER RESOURCES, INC.

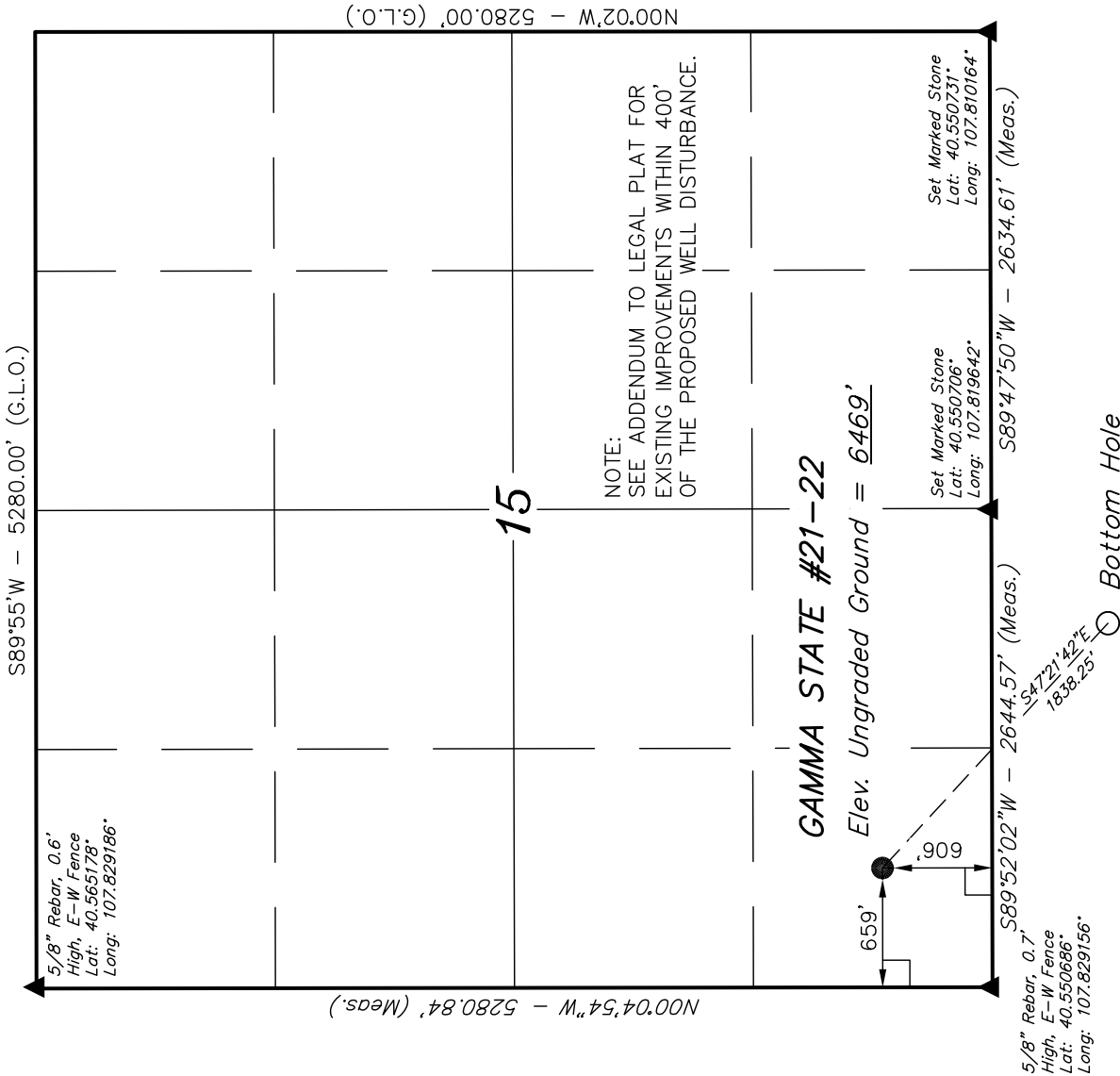
Well location, GAMMA STATE #21-22 (SURFACE LOCATION), located as shown in the SW 1/4 SW 1/4 of Section 15, T7N, R93W, 6th P.M., Moffat County, Colorado.

BASIS OF ELEVATION

SPOT ELEVATION LOCATED AT THE NORTHEAST CORNER OF SECTION 10, T6N, R93W, 6th P.M. TAKEN FROM THE HORSE GULCH QUADRANGLE, COLORADO, MOFFAT COUNTY, 7.5 MINUTE QUAD (TOPOGRAPHIC MAP) PUBLISHED BY THE UNITED STATES DEPARTMENT OF THE INTERIOR, GEOLOGICAL SURVEY. SAID ELEVATION IS MARKED AS BEING 6246 FEET.

BASIS OF BEARINGS

BASIS OF BEARINGS IS A G.P.S. OBSERVATION.



LEGEND:

— = 90° SYMBOL

● = PROPOSED WELL HEAD.

▲ = SECTION CORNERS LOCATED.

PDOP = 1.6	
NAD 83 (SURFACE LOCATION)	
LATITUDE = 40°33'08.47"	(40.552353)
LONGITUDE = 107°49'36.43"	(107.826786)
NAD 27 (SURFACE LOCATION)	
LATITUDE = 40°33'08.58"	(40.552383)
LONGITUDE = 107°49'34.16"	(107.826156)

SCALE 1" = 1000'	DATE SURVEYED: 02-14-11	DATE DRAWN: 02-16-11
PARTY G.S. G.B. B.H. M.D.	REFERENCES G.L.O. PLAT	
WEATHER COLD	FILE	

REVISED: 03-15-11 M.D.
UINTAH ENGINEERING & LAND SURVEYING
85 SOUTH 200 EAST - VERNAL, UTAH 84078
(435) 789-1017



CERTIFICATE

THIS IS TO CERTIFY THAT THE ABOVE PLAT WAS PREPARED FROM FIELD NOTES OF ACTUAL SURVEYS MADE BY ME OR UNDER MY SUPERVISION AND THAT THE SAME ARE TRUE AND CORRECT TO THE BEST OF MY KNOWLEDGE AND BELIEF.

[Signature]
REGISTERED LAND SURVEYOR
REGISTRATION NO. 17492
STATE OF COLORADO

T7N, R93W, 6th P.M.

QUICKSILVER RESOURCES, INC.

5/8" Rebar, 0.7'
High, E-W Fence
Lat: 40.550686°
Long: 107.829156°

S89°52'02"W - 2644.57' (Meas.)
S89°47'50"W - 2634.61' (Meas.)
Set Marked Stone
Lat: 40.550731°
Long: 107.810164°

500°09'24"E - 2640.00' (Meas.)
500°02'16"W - 2638.74' (Meas.)

2011'

GAMMA STATE #21-22
Bottom Hole

NOTE:
THE PROPOSED BOTTOM HOLE BEARS S47°21'42"E
1838.25' FROM THE PROPOSED WELL HEAD WHICH
IS LOCATED IN THE SW 1/4 SW 1/4 OF SECTION 15,
T7N, R93W, 6th P.M. AT A DISTANCE OF 606' FSL
659' FWL.

5/8" Rebar,
Lat: 40.543444°
Long: 107.829158°

22

N00°02'W - 5280.00' (G.L.O.)

S89°56'W - 5282.64' (G.L.O.)

Set Marked Stone,
Steel Post
Lat: 40.536200°
Long: 107.829131°

LEGEND:

— = 90° SYMBOL

● = PROPOSED WELL HEAD.

▲ = SECTION CORNERS LOCATED.

NAD 83 (TARGET BOTTOM HOLE)
LATITUDE = 40°32'56.17" (40.548936)
LONGITUDE = 107°49'18.92" (107.821922)
NAD 27 (TARGET BOTTOM HOLE)
LATITUDE = 40°32'56.28" (40.548967)
LONGITUDE = 107°49'16.65" (107.821292)

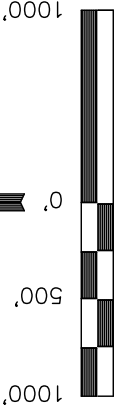
Well location, GAMMA STATE #21-22 (BOTTOM HOLE), located as shown in the NE 1/4 NW 1/4 of Section 22, T7N, R93W, 6th P.M., Moffat County, Colorado.

BASIS OF ELEVATION

SPOT ELEVATION LOCATED AT THE NORTHEAST CORNER OF SECTION 10, T6N, R93W, 6th P.M. TAKEN FROM THE HORSE GULCH QUADRANGLE, COLORADO, MOFFAT COUNTY, 7.5 MINUTE QUAD (TOPOGRAPHIC MAP) PUBLISHED BY THE UNITED STATES DEPARTMENT OF THE INTERIOR, GEOLOGICAL SURVEY. SAID ELEVATION IS MARKED AS BEING 6246 FEET.

BASIS OF BEARINGS

BASIS OF BEARINGS IS A G.P.S. OBSERVATION.



S C A L E

CERTIFICATE

THIS IS TO CERTIFY THAT THE ABOVE PLAT WAS PREPARED FROM FIELD NOTES OF ACTUAL SURVEYS MADE BY ME OR UNDER MY SUPERVISION AND THAT THE SAME ARE TRUE AND CORRECT TO THE BEST OF MY KNOWLEDGE AND BELIEF.

REGISTERED LAND SURVEYOR
REGISTRATION NO. 17492
STATE OF COLORADO
Robert J. [Signature]
17492

REVISED: 03-15-11 M.D.

UINTAH ENGINEERING & LAND SURVEYING
85 SOUTH 200 EAST - VERNAL, UTAH 84078
(435) 789-1017

SCALE 1" = 1000'	DATE SURVEYED: 02-14-11	DATE DRAWN: 02-16-11
PARTY G.S. G.B. B.H. M.D.	REFERENCES G.L.O. PLAT	
WEATHER COLD	FILE	

QUICKSILVER RESOURCES, INC.