

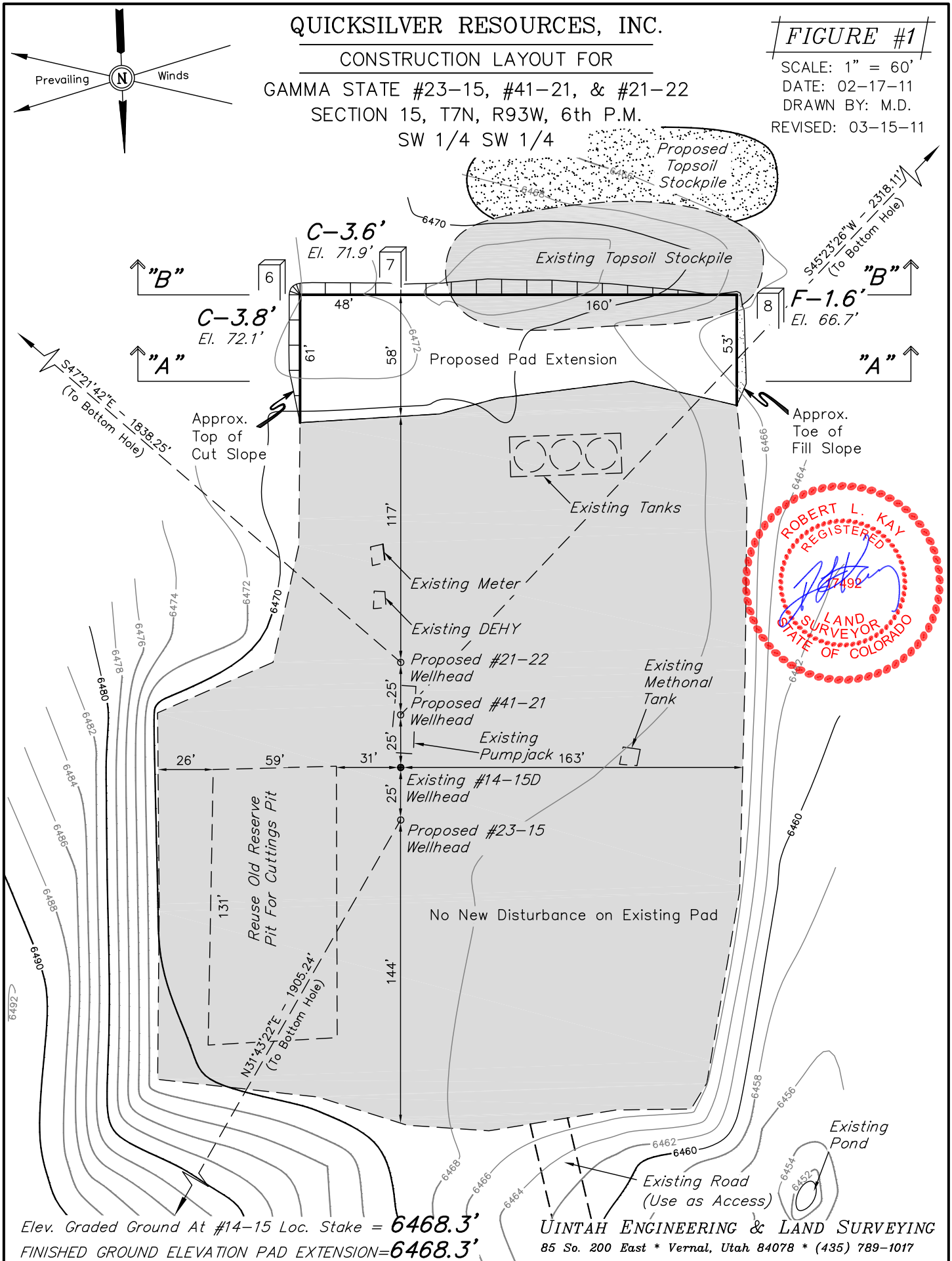
FIGURE #1

SCALE: 1" = 60'

DATE: 02-17-11

DRAWN BY: M.D.

REVISÉD: 03-15-11



QUICKSILVER RESOURCES, INC.

TYPICAL CROSS SECTIONS FOR

GAMMA STATE #23-15, #41-21, & #21-22

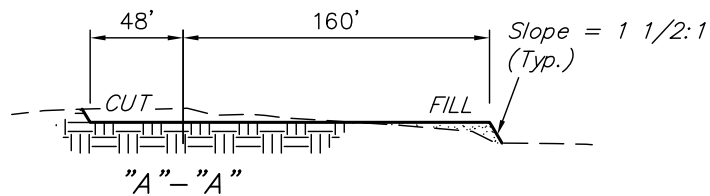
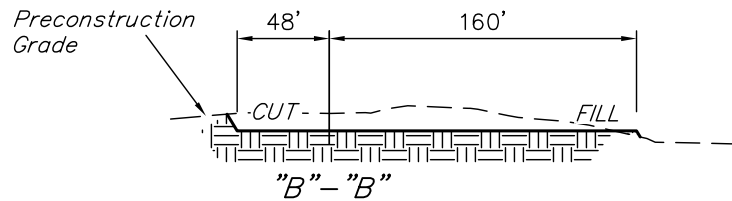
SECTION 15, T7N, R93W, 6th P.M.

SW 1/4 SW 1/4

FIGURE #2



1" = 40'
X-Section
Scale
1" = 100'
DATE: 02-24-11
DRAWN BY: M.D.
REVISED: 03-15-11



APPROXIMATE ACREAGES

EXISTING WELL SITE DISTURBANCE = ± 1.929 ACRES
NEW WELL SITE DISTURBANCE = ± 0.278 ACRES
TOTAL = ± 2.207 ACRES

* NOTE:
FILL QUANTITY INCLUDES
5% FOR COMPACTION

APPROXIMATE YARDAGES

(6") Topsoil Stripping = 220 Cu. Yds.
(New Construction Area Only)
Remaining Location = 750 Cu. Yds.
TOTAL CUT = 970 CU.YDS.
FILL = 120 CU.YDS.

EXCESS MATERIAL = 850 Cu. Yds.
Topsoil = 220 Cu. Yds.

EXCESS UNBALANCE = 630 Cu. Yds.
(After Interim Rehabilitation)

UINTAH ENGINEERING & LAND SURVEYING
85 So. 200 East * Vernal, Utah 84078 * (435) 789-1017



QUICKSILVER RESOURCES, INC.

TYPICAL RIG LAYOUT FOR

GAMMA STATE #23-15, #41-21, & #21-22
SECTION 15, T7N, R93W, 6th P.M.
SW 1/4 SW 1/4

FIGURE #3

SCALE: 1" = 60'

DATE: 02-28-11

DRAWN BY: M.D.

REVISED: 03-15-11

