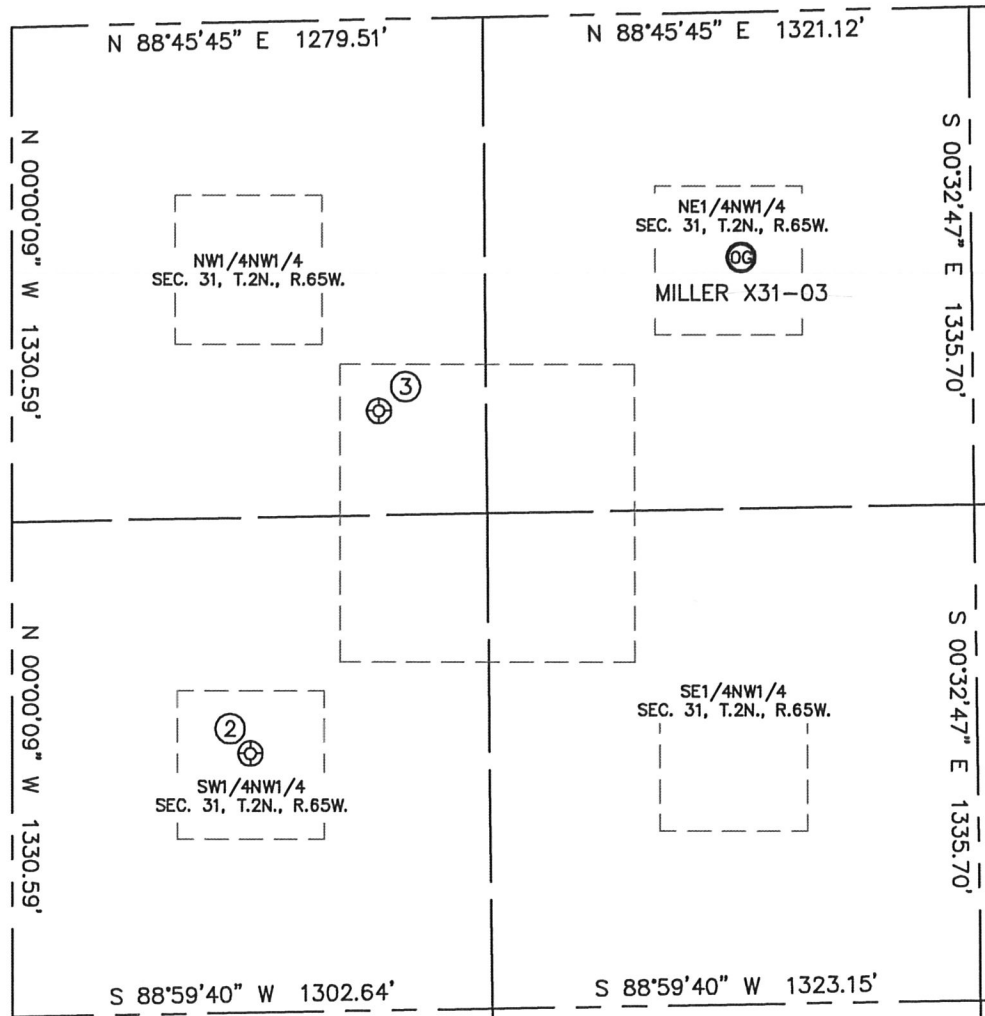




# SITE SKETCH

MILLER X31-03

SECTION: 31  
TOWNSHIP: 2N  
RANGE: 65W



②

MILLER X31-5J  
SW1/4NW1/4  
1966' FNL  
647' FWL  
LAT-40.09668°N  
LONG-104.71363°W  
PDOP: 1.9  
ELEV: 5007'

③

MILLER RED X31-2D  
NW1/4NW1/4  
1052' FNL  
996' FWL  
LAT-40.09920°N  
LONG-104.71235°W  
PDOP: 3.5  
ELEV: 5010'

