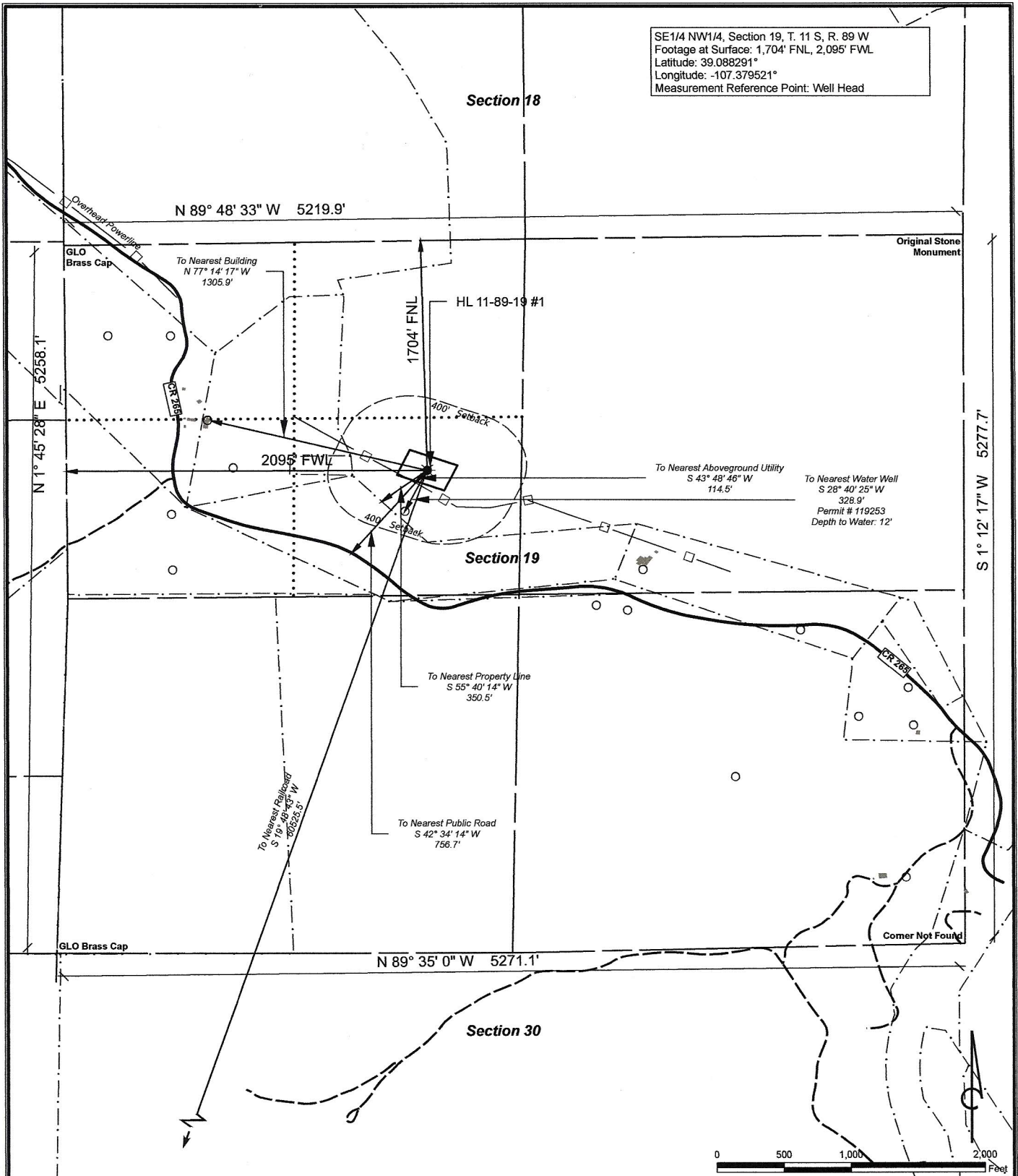


SE1/4 NW1/4, Section 19, T. 11 S, R. 89 W
 Footage at Surface: 1,704' FNL, 2,095' FWL
 Latitude: 39.088291°
 Longitude: -107.379521°
 Measurement Reference Point: Well Head



Visible Improvements to Well Head		
Description	Bearing	Distance (Ft.)
Building	N 77° 14' 17" W	1,306
Public Road	S 42° 34' 14" W	757
Railroad	S 19° 48' 43" W	60,526
Aboveground Utility	S 43° 48' 56" W	115
Property Line	S 55° 40' 14" W	351
Water Well	S 28° 40' 25" W	329

Current Land Use:
 CROP LAND: Irrigated

NAD 83 Datum
 SCALE: 1" = 1,000'
 DATE: 01.08.2011



SG Interests
 PO Box 26
 Montrose, CO 81402
 970-252-0696

Bull Mountain Unit
 T. 11 S, R. 89 W, Section 19

HL 11-89-19 #1
 LOCATION