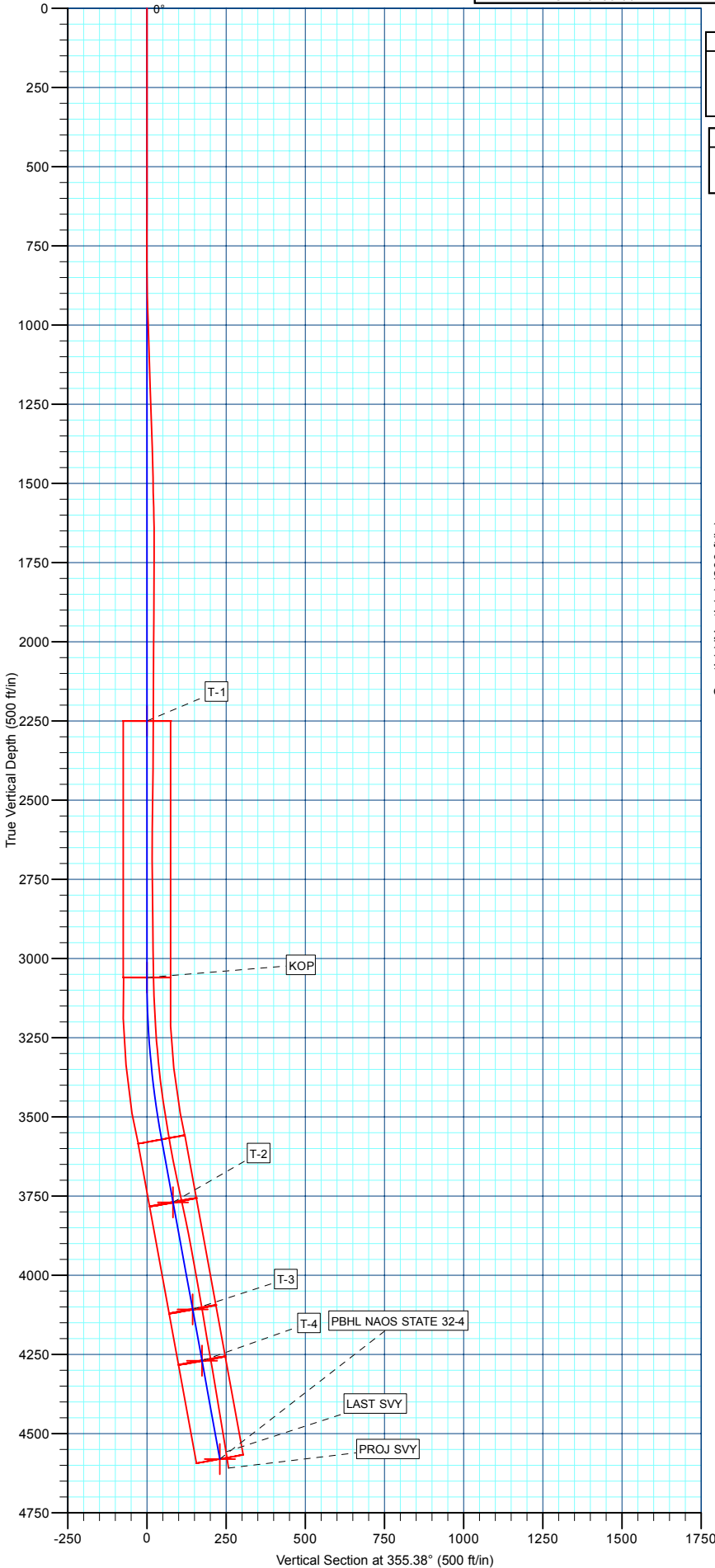
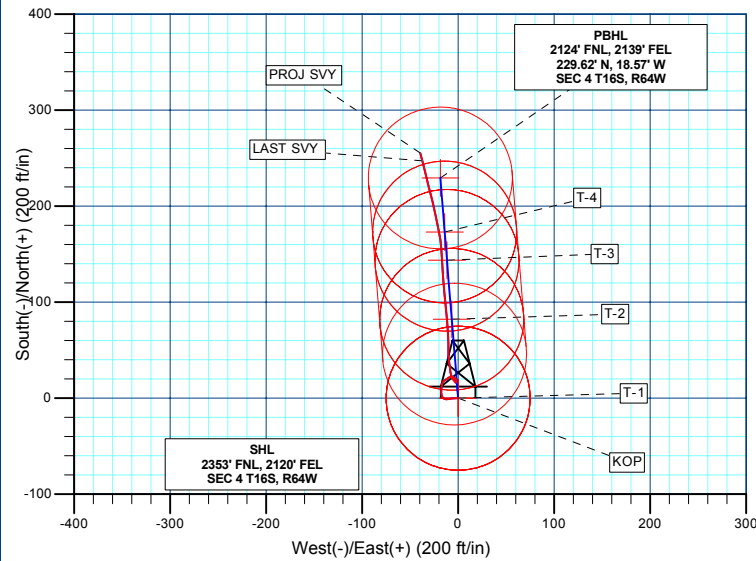
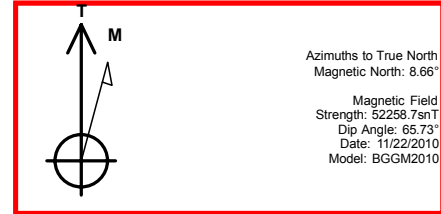


Project: EL PASO COUNTY, CO
 Site: NAOS STATE 32-4
 Well: NAOS STATE 32-4
 Wellbore: NAOS STATE 32-4
 Design: NAOS STATE 32-4
 Lat: 38° 41' 14.989 N
 Long: 104° 33' 32.180 W
 KB: WELL @ 5770.00ft (CAPSTAR 311)
 GR: 5759.00

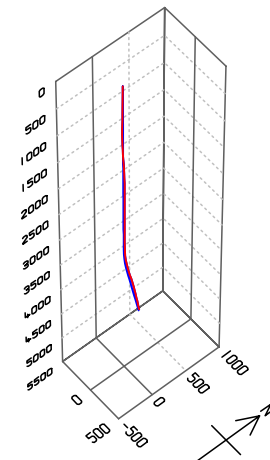


SECTION DETAILS										
MD	Inc	Azi	TVD	+N/-S	+E/-W	DLeg	TFace	VSec	Annotation	
0.00	0.00	0.00	0.00	0.00	0.00	0.00	0.00	0.00	Start Build 2.01	
3060.00	0.00	0.00	3060.00	0.00	0.00	0.00	0.00	0.00	Start 1025.57 hold at 3574.43 MD	
3574.43	10.34	355.38	3571.84	-46.14	-3.73	2.01	355.38	46.29	TD at 4600.00	
4600.00	10.34	355.38	4580.56	229.62	-18.57	0.00	0.00	230.37		

WELL DETAILS: NAOS STATE 32-4										
			Ground Level:	5759.00						
+N/-S	+E/-W	Northing	Easting	Latitude	Longitude	Slot				
0.00	0.00	1312474.27	3268613.36	38° 41' 14.989 N	104° 33' 32.180 W					



WELLBORE TARGET DETAILS (LAT/LONG)						
Name	TVD	+N/-S	+E/-W	Latitude	Longitude	Shape
T-1	2250.00	0.00	0.00	38° 41' 14.989 N	104° 33' 32.180 W	Circle (Radius: 75.00)
KOP	3060.00	0.00	0.00	38° 41' 14.989 N	104° 33' 32.180 W	Circle (Radius: 75.00)
T-2	3770.00	82.22	-6.65	38° 41' 15.802 N	104° 33' 32.264 W	Circle (Radius: 75.00)
T-3	4108.00	143.68	-11.62	38° 41' 16.409 N	104° 33' 32.327 W	Circle (Radius: 75.00)
T-4	4270.00	173.14	-14.00	38° 41' 16.701 N	104° 33' 32.357 W	Circle (Radius: 75.00)
PBHL NAOS STATE 32-4	4580.56	229.44	-18.55	38° 41' 17.257 N	104° 33' 32.414 W	Circle (Radius: 75.00)



Survey: Survey #1 (NAOS STATE 32-4/NAOS STATE 32-4)

Created By: TRACY WILLIAMS Date: 9:10, December 15 2010