
OXY GRAND JUNCTION EBUSINESS

**CC 697-08-31B
GRAND VALLEY
Garfield County , Colorado**

Cement Surface Casing
31-Dec-2010

Post Job Summary

The Road to Excellence Starts with Safety

Sold To #: 344034	Ship To #: 344034	Quote #:	Sales Order #: 7842730
Customer: OXY GRAND JUNCTION EBUSINESS	Customer Rep: Benevides, Victor		
Well Name: CC	Well #: 697-08-31B	API/UWI #: 05-045-18351	
Field: GRAND VALLEY	City (SAP): PARACHUTE	County/Parish: Garfield	State: Colorado
Lat: N 39.536 deg. OR N 39 deg. 32 min. 10.169 secs.	Long: W 108.238 deg. OR W -109 deg. 45 min. 44.647 secs.		
Contractor: H&P 330	Rig/Platform Name/Num: H&P 330		
Job Purpose: Cement Surface Casing			
Well Type: Development Well	Job Type: Cement Surface Casing		
Sales Person: DUNNING, DUSTIN	Srv Supervisor: TRIPLETT, MICHEAL	MBU ID Emp #: 447908	

Job Personnel

HES Emp Name	Exp Hrs	Emp #	HES Emp Name	Exp Hrs	Emp #	HES Emp Name	Exp Hrs	Emp #
ANDREWS, ANTHONY Michael	17	321604	BORSZICH, STEPHEN A	17	412388	HAYES, JESSE Doug	17	403601
JAMISON, PRICE W	17	229155	SINGLETON, AUSTIN W	17	487406	TRIPLETT, MICHEAL Anthony	17	447908

Equipment

HES Unit #	Distance-1 way	HES Unit #	Distance-1 way	HES Unit #	Distance-1 way	HES Unit #	Distance-1 way
10551730C	120 mile	10973571	120 mile	11259881	120 mile		

Job Hours

Date	On Location Hours	Operating Hours	Date	On Location Hours	Operating Hours	Date	On Location Hours	Operating Hours
12/30/2010	13.5	4.5	12/31/2010	3.5	1			

TOTAL Total is the sum of each column separately

Job

Formation Name	Top	Bottom	Called Out	Date	Time	Time Zone
Formation Depth (MD)			On Location	30 - Dec - 2010	07:00	MST
Form Type	BHST		Job Started	30 - Dec - 2010	10:30	MST
Job depth MD	2715. ft	Job Depth TVD	Job Completed	30 - Dec - 2010	19:35	MST
Water Depth		Wk Ht Above Floor	Departed Loc	31 - Dec - 2010	00:36	MST
Perforation Depth (MD)	From	To		31 - Dec - 2010	03:30	MST

Well Data

Description	New / Used	Max pressure psig	Size in	ID in	Weight lbm/ft	Thread	Grade	Top MD ft	Bottom MD ft	Top TVD ft	Bottom TVD ft
-------------	------------	-------------------	---------	-------	---------------	--------	-------	-----------	--------------	------------	---------------

Tools and Accessories

Type	Size	Qty	Make	Depth	Type	Size	Qty	Make	Depth	Type	Size	Qty	Make
Guide Shoe					Packer					Top Plug			
Float Shoe					Bridge Plug					Bottom Plug			
Float Collar					Retainer					SSR plug set			
Insert Float										Plug Container			
Stage Tool										Centralizers			

Miscellaneous Materials

Gelling Agt	Conc	Surfactant	Conc	Acid Type	Qty	Conc	%
Treatment Fld	Conc	Inhibitor	Conc	Sand Type	Size		Qty

Fluid Data

Stage/Plug #: 1									
Fluid #	Stage Type	Fluid Name	Qty	Qty uom	Mixing Density lbm/gal	Yield ft3/sk	Mix Fluid Gal/sk	Rate bbl/min	Total Mix Fluid Gal/sk

Stage/Plug #: 1									
Fluid #	Stage Type	Fluid Name	Qty	Qty uom	Mixing Density uom	Yield uom	Mix Fluid uom	Rate uom	Total Mix Fluid uom

Stage/Plug #: 1									
Fluid #	Stage Type	Fluid Name	Qty	Qty uom	Mixing Density lbm/gal	Yield ft ³ /sk	Mix Fluid Gal/sk	Rate bbl/min	Total Mix Fluid Gal/sk
1	Water Spacer		20.00	bbl	8.33	.0	.0	.0	
2	Gel Water		20.00	bbl	.	.0	.0	.0	
3	Water Spacer		20.00	bbl	.	.0	.0	.0	
4	Lead Cement	VERSACEM (TM) SYSTEM (452010)	1075.0	sacks	12.3	2.33	12.62		12.62
		12.62 Gal	FRESH WATER						
5	Tail Cement	VERSACEM (TM) SYSTEM (452010)	160.0	sacks	12.8	2.07	10.67		10.67
		10.67 Gal	FRESH WATER						
6	Displacement		204.00	bbl	.	.0	.0	.0	
Calculated Values		Pressures		Volumes					
Displacement	204.1	Shut In: Instant		Lost Returns	10	Cement Slurry	395	Pad	
Top Of Cement	SURFACE	5 Min		Cement Returns	15	Actual Displacement	204.1	Treatment	
Frac Gradient		15 Min		Spacers	60	Load and Breakdown		Total Job	660
Rates									
Circulating	4	Mixing	5	Displacement	7	Avg. Job	6		
Cement Left In Pipe	Amount	0 ft	Reason	Shoe Joint					
Frac Ring # 1 @	ID	Frac ring # 2 @	ID	Frac Ring # 3 @	ID	Frac Ring # 4 @	ID		
The Information Stated Herein Is Correct				Customer Representative Signature					

The Road to Excellence Starts with Safety

Sold To #: 344034	Ship To #: 344034	Quote #:	Sales Order #: 7842730
Customer: OXY GRAND JUNCTION EBUSINESS		Customer Rep: Benevides, Victor	
Well Name: CC	Well #: 697-08-31B	API/UWI #: 05-045-18351	
Field: GRAND VALLEY	City (SAP): PARACHUTE	County/Parish: Garfield	State: Colorado
Legal Description:			
Lat: N 39.536 deg. OR N 39 deg. 32 min. 10.169 secs.		Long: W 108.238 deg. OR W -109 deg. 45 min. 44.647 secs.	
Contractor: H&P 330		Rig/Platform Name/Num: H&P 330	
Job Purpose: Cement Surface Casing			Ticket Amount:
Well Type: Development Well		Job Type: Cement Surface Casing	
Sales Person: DUNNING, DUSTIN		Srv Supervisor: TRIPLETT, MICHEAL	MBU ID Emp #: 447908

Activity Description	Date/Time	Cht #	Rate bbl/min	Volume bbl		Pressure psig		Comments
				Stage	Total	Tubing	Casing	
Call Out	12/30/2010 07:00							
Pre-Convoy Safety Meeting	12/30/2010 07:15							
Crew Leave Yard	12/30/2010 07:30							GOT ROLLED FROM 353 TO 330
Arrive At Loc	12/30/2010 10:30							
Assessment Of Location Safety Meeting	12/30/2010 10:45							
Other	12/30/2010 11:00							SPOT EQUIPMENT
Pre-Rig Up Safety Meeting	12/30/2010 14:45							
Rig-Up Equipment	12/30/2010 15:00							
Pre-Job Safety Meeting	12/30/2010 19:15							
Start Job	12/30/2010 19:35							TD:2715, TP:2695, SJ:54, MW:9.0, CASING: 9.625 36#, OH: 14.75"
Test Lines	12/30/2010 20:34						3000.0	HAD PROBLEMS WITH THE PUMP FREEZING UP.
Pump Spacer 2	12/30/2010 20:39		5	20			170.0	FRESH WATER
Pump Spacer	12/30/2010 20:51		5	20			170.0	SUPERFLUSH
Pump Spacer 1	12/30/2010 21:04		5	20			195.0	FRESH WATERM, HAD TO SHUT DOWN TO RE-PRIME PUMPS.
Activity Description	Date/Time	Cht #	Rate bbl/min	Volume bbl		Pressure psig		Comments
				Stage	Total	Tubing	Casing	

Sold To # : 344034

Ship To # :344034

Quote # :

Sales Order # :

7842730

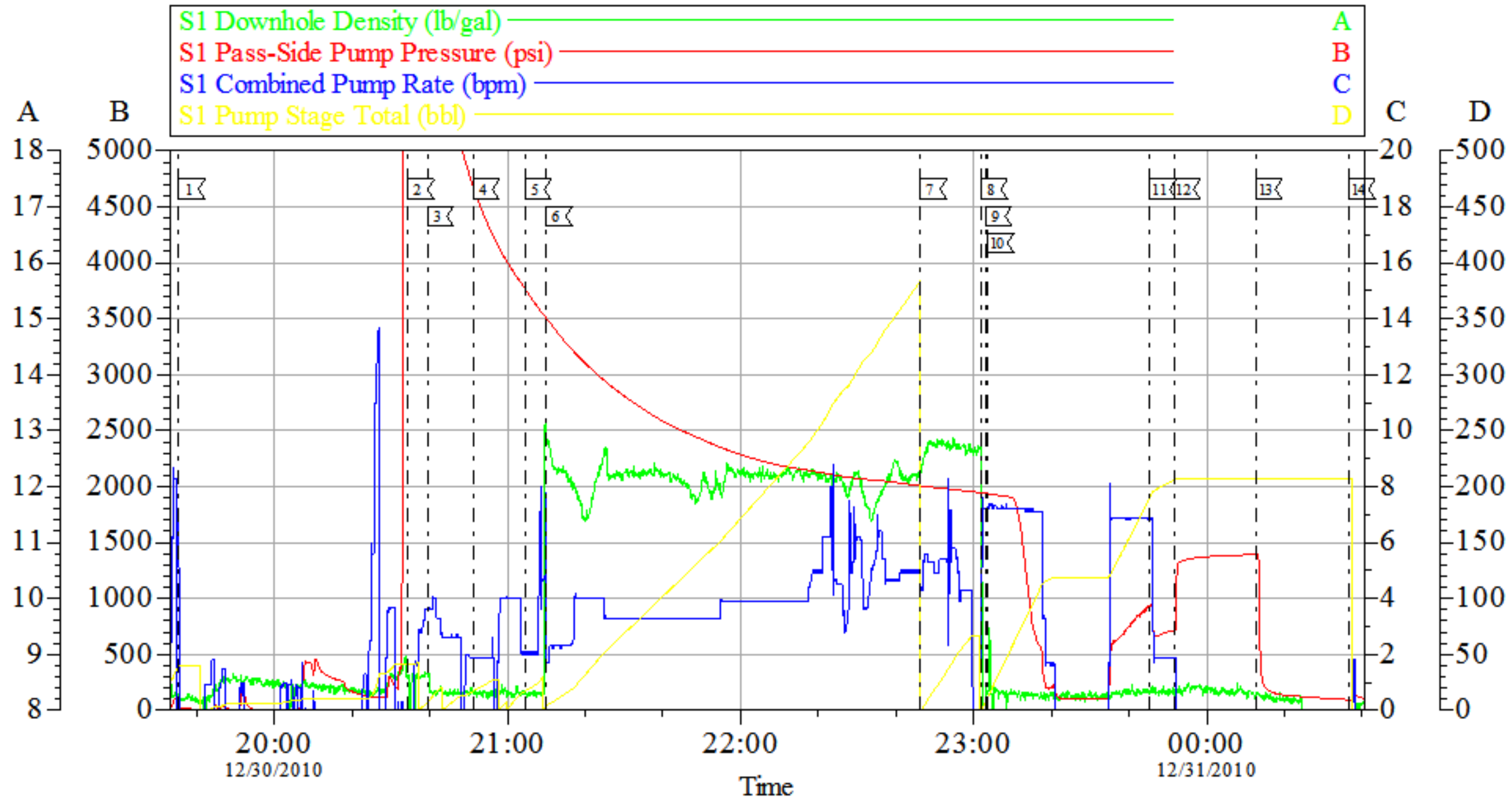
SUMMIT Version: 7.20.130

Friday, December 31, 2010 02:05:00

Pump Lead Cement	12/30/2010 21:10		5	334			170.0	804 SACKS MIXED @ 12.3, 2.33 YIELD, 12.62 GAL/SACK. COMPANY MAN WANT TO CUT SLURRY SHORT 100BBLS DUE TO GOOD CIRCULATION PRIOR TO CEMENTING.
Pump Tail Cement	12/30/2010 22:46		5	59			175.0	160 SACKS MIXED @ 12.8, 2.07 YIELD, 10.67 GAL/SACK
Shutdown	12/30/2010 23:01							
Drop Top Plug	12/30/2010 23:03							
Pump Displacement	12/30/2010 23:04		7	204.1			400.0	
Slow Rate	12/30/2010 23:45		2	194.1			510.0	SLOWED RATE LAST 10BBLS OF DISPLACEMENT
Bump Plug	12/30/2010 23:51		2	204.1			575.0	BUMP PLUG AND WENT 600PSI OVER TO 1235PSI
Check Floats	12/31/2010 00:12							FLOATS HELD
End Job	12/31/2010 00:36							HAD NO CIRCULATION UNTIL 10 BBLS OF SPACER GONE, HAD GOOD CIRCULATION THROUGHOUT JOB, GOT 15BBLS OF GOOD CEMENT BACK TO SURFACE. ADD 7 ADDITIONAL HOURS TO TICKET, RIG ALSO USED 100#'S OF SUGAR
Rig-Down Equipment	12/31/2010 01:00							
Pre-Convoy Safety Meeting	12/31/2010 03:15							
Crew Leave Location	12/31/2010 03:30							THANKS FOR USING HALLIBURTON MIKE TRIPLETT AND CREW

OXY

SURFACE CC-697-08-31B



Local Event Log

1 START JOB	12/30/2010 19:35:22	2 PRESASURE TEST	12/30/2010 20:34:23	3 START FRESHWATER	12/30/2010 20:39:23
4 START FRESHWATER GEL	12/30/2010 20:51:05	5 START FRESHWATER	12/30/2010 21:04:26	6 START LEAD	12/30/2010 21:10:00
7 START TAIL	12/30/2010 22:46:21	8 SHUTDOWN	12/30/2010 23:01:58	9 DROP PLUG	12/30/2010 23:03:06
10 START DISPLACEMENT	12/30/2010 23:03:37	11 SLOW RATE	12/30/2010 23:45:25	12 BUMP PLUG	12/30/2010 23:51:33
13 CHECK FLOATS	12/31/2010 00:12:41	14 END JOB	12/31/2010 00:36:39		

Customer: OXY
Well Description: CC-697-08-31B
Company Rep: MARCO SILVA

Job Date: 30-Dec-2010
Job Type: SURFACE
Cement Supervisor: MIKE TRIPLETT

Sales Order #: 7842730
ADC Used: YES
Elite #: 2

HALLIBURTON
OptiCem v6.3.4
31-Dec-10 01:25