

OXY GRAND JUNCTION EBUSINESS
DO NOT MAIL
BROWNFIELD, Texas

CC
CC 697-08-47A

H&P Drilling/H&P/330

Post Job Summary

Cement Surface Casing

Prepared for:
Date Prepared:
Version: 1

Service Supervisor: SMITH, DUSTIN

Submitted by:

HALLIBURTON

The Road to Excellence Starts with Safety

The Road to Excellence Starts With Safety							
Sold To #: 344034		Ship To #: 2830895		Quote #:		Sales Order #: 7842742	
Customer: OXY GRAND JUNCTION EBUSINESS				Customer Rep: Silva, Marco			
Well Name: CC			Well #: 697-08-47A			API/UWI #: 05-045-18349	
Field: GRAND VALLEY		City (SAP): PARACHUTE		County/Parish: Garfield		State: Colorado	
Lat: N 39.536 deg. OR N 39 deg. 32 min. 10.057 secs.				Long: W 108.238 deg. OR W -109 deg. 45 min. 44.694 secs.			
Contractor: H&P Drilling			Rig/Platform Name/Num: H&P 330				
Job Purpose: Cement Surface Casing							
Well Type: Development Well			Job Type: Cement Surface Casing				
Sales Person: DUNNING, DUSTIN			Srv Supervisor: SMITH, DUSTIN			MBU ID Emp #: 418015	

Job Personnel

HES Emp Name	Exp Hrs	Emp #	HES Emp Name	Exp Hrs	Emp #	HES Emp Name	Exp Hrs	Emp #
CHASTAIN, DERICK Allan	13	455848	KUKUS, CRAIG A	13	369124	LYNGSTAD, FREDRICK D	13	403742
SMITH, DUSTIN Michael	13	418015	WELLS, DOUG	13	487783	WYCKOFF, RYAN Scott	13	476117

Equipment

HES Unit #	Distance-1 way	HES Unit #	Distance-1 way	HES Unit #	Distance-1 way	HES Unit #	Distance-1 way
10001431	120 mile	10741119	120 mile	10783473	120 mile	10856464	120 mile
10872429	120 mile	10951248	120 mile	11360883	120 mile		

Job Hours

Date	On Location Hours	Operating Hours	Date	On Location Hours	Operating Hours	Date	On Location Hours	Operating Hours
01/14/10	13	8						

TOTAL Total is the sum of each column separately

Job

Formation Name	Top	Bottom	Called Out	Date	Time	Time Zone
Formation Depth (MD)			On Location	13 - Jan - 2011	18:00	MST
Form Type		BHST	Job Started	14 - Jan - 2011	05:00	MST
Job depth MD	2730. ft	Job Depth TVD	Job Started	14 - Jan - 2011	08:34	MST
Water Depth		Wk Ht Above Floor	Job Completed	14 - Jan - 2011	14:24	MST
Perforation Depth (MD)	From	To	Departed Loc	14 - Jan - 2011	18:00	MST

Well Data

Description	New / Used	Max pressure psig	Size in	ID in	Weight lbm/ft	Thread	Grade	Top MD ft	Bottom MD ft	Top TVD ft	Bottom TVD ft
14 3/4" Open Hole				14.75				.	2730.		
9 5/8" Surface Casing	New		9.625	8.921	36.			.	2730.		

Tools and Accessories

Type	Size	Qty	Make	Depth	Type	Size	Qty	Make	Depth	Type	Size	Qty	Make
Guide Shoe					Packer					Top Plug	9 5/8	1	
Float Shoe					Bridge Plug					Bottom Plug			
Float Collar					Retainer					SSR plug set			
Insert Float										Plug Container	9 5/8	1	
Stage Tool										Centralizers			

Miscellaneous Materials

Gelling Agt	Conc	Surfactant	Conc	Acid Type	Qty	Conc	%
Treatment Fld	Conc	Inhibitor	Conc	Sand Type	Size	Qty	

Fluid Data

Stage/Plug #: 1									
Fluid #	Stage Type	Fluid Name	Qty	Qty uom	Mixing Density lbm/gal	Yield ft3/sk	Mix Fluid Gal/sk	Rate bbl/min	Total Mix Fluid Gal/sk

1	Water Spacer		20.00	bbl	8.33	.0	.0	5.0	
2	Gel Spacer		20.00	bbl	.	.0	.0	5.0	
3	Water Spacer		20.00	bbl	8.33	.0	.0	5.0	
4	VersaCem Lead Cement	VERSACEM (TM) SYSTEM (452010)	1070.0	sacks	12.3	2.33	12.62	5.5	12.62
	12.62 Gal	FRESH WATER							
5	VersaCem Tail Cement	VERSACEM (TM) SYSTEM (452010)	160.0	sacks	12.8	2.07	10.67	5.5	10.67
	10.67 Gal	FRESH WATER							
6	Displacement		206.00	bbl	8.33	.0	.0	5.0	
7	HalCem Top Out Slurry	HALCEM (TM) SYSTEM (452986)	103.0	sacks	12.5	1.97	10.96	1.5	10.96
	10.96 Gal	FRESH WATER							
Calculated Values		Pressures		Volumes					
Displacement	206.1	Shut In: Instant		Lost Returns		Cement Slurry	603	Pad	
Top Of Cement	SURFACE	5 Min		Cement Returns	23	Actual Displacement	206.1	Treatment	
Frac Gradient		15 Min		Spacers	60	Load and Breakdown		Total Job	869
Rates									
Circulating		Mixing	5.5	Displacement	5	Avg. Job			5
Cement Left In Pipe	Amount	51 ft	Reason	Shoe Joint					
Frac Ring # 1 @	ID	Frac ring # 2 @	ID	Frac Ring # 3 @	ID	Frac Ring # 4 @	ID		
The Information Stated Herein Is Correct				Customer Representative Signature					

The Road to Excellence Starts with Safety

Sold To #: 344034		Ship To #: 2830895		Quote #:		Sales Order #: 7842742	
Customer: OXY GRAND JUNCTION EBUSINESS				Customer Rep: Silva, Marco			
Well Name: CC			Well #: 697-08-47A			API/UWI #: 05-045-18349	
Field: GRAND VALLEY		City (SAP): PARACHUTE		County/Parish: Garfield		State: Colorado	
Legal Description:							
Lat: N 39.536 deg. OR N 39 deg. 32 min. 10.057 secs.				Long: W 108.238 deg. OR W -109 deg. 45 min. 44.694 secs.			
Contractor: H&P Drilling			Rig/Platform Name/Num: H&P 330				
Job Purpose: Cement Surface Casing						Ticket Amount:	
Well Type: Development Well			Job Type: Cement Surface Casing				
Sales Person: DUNNING, DUSTIN			Srvc Supervisor: SMITH, DUSTIN			MBU ID Emp #: 418015	

Activity Description	Date/Time	Cht #	Rate bbl/min	Volume bbl		Pressure psig		Comments
				Stage	Total	Tubing	Casing	
Call Out	01/13/2011 18:00							ELITE # 7
Depart Yard Safety Meeting	01/13/2011 19:30							ALL HES EMPLOYEES
Arrive At Loc	01/14/2011 05:00							ARRIVED ON LOCATION 0500 REQUESTED ON LOCATION TIME 0300 RIG STILL RUNNING CASING WHEN ARRIVED ON LOCATION
Assessment Of Location Safety Meeting	01/14/2011 05:30							ALL HES EMPLOYEES
Pre-Rig Up Safety Meeting	01/14/2011 06:30							ALL HES EMPLOYEES
Rig-Up Equipment	01/14/2011 06:45							1 F-450 PICKUP 1 HT-400 PUMP TRUCK 1 660 BULK TRUCK 2 FIELD STORAGE BINS
Pre-Job Safety Meeting	01/14/2011 08:20							ALL HES EMPLOYEES AND RIG CREW
Rig-Up Completed	01/14/2011 08:30							RIG CIRCULATED FOR 1 HOUR PRIOR TO JOB
Start Job	01/14/2011 08:34							TD: 2730 TP: 2717 SJ: 51 MUD WT: 8.9 9 5/8 36# CSG 14 3/4 OH
Test Lines	01/14/2011 08:35					3500.0		PRESSURE TEST OK
Pump Spacer 1	01/14/2011 08:40		5	20	20		322.0	FRESH WATER
Pump Spacer 2	01/14/2011 08:45		5	20	20		335.0	GELLED SPACER
Pump Spacer 1	01/14/2011 08:49		5	20	20		300.0	FRESH WATER

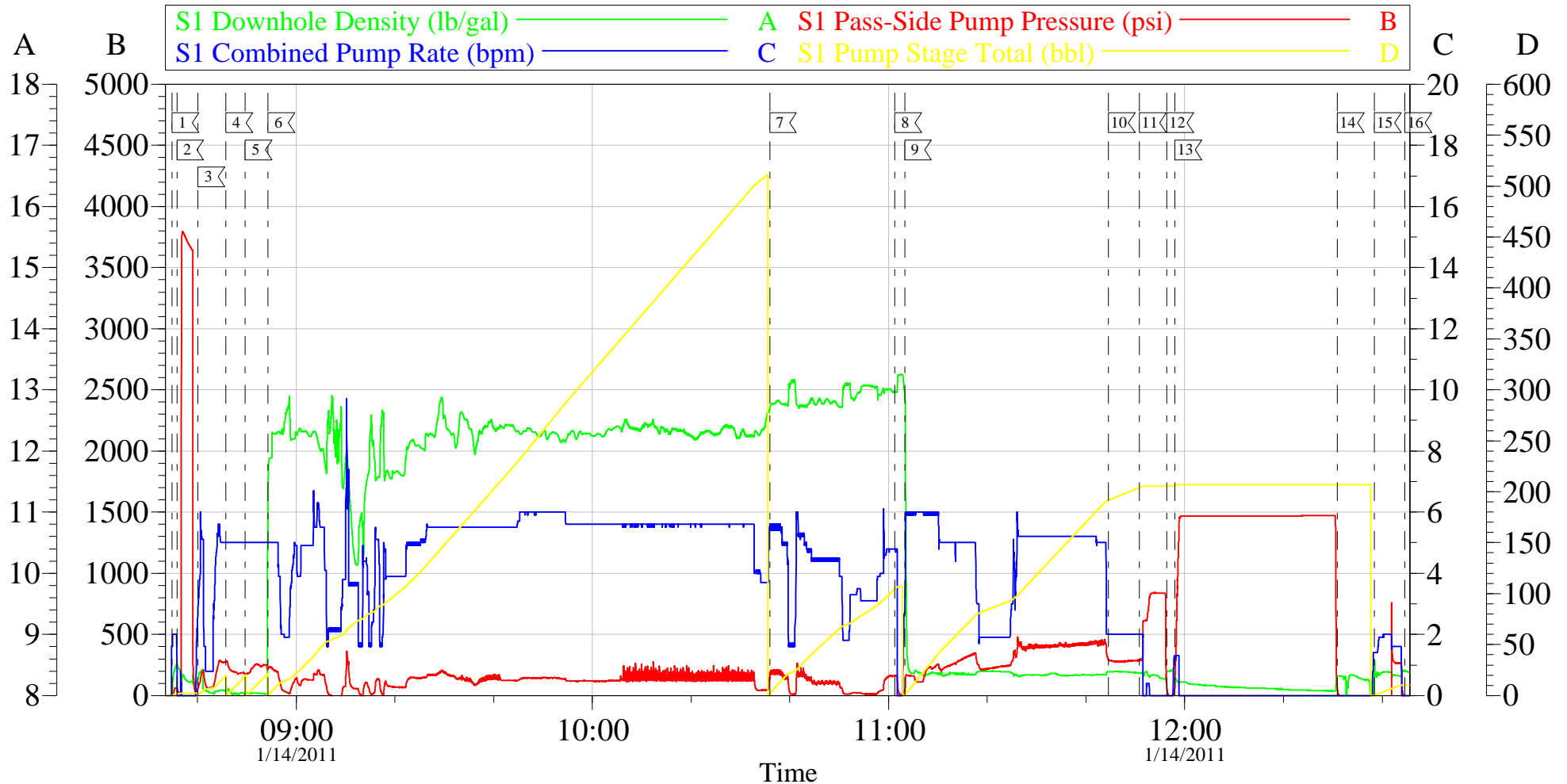
Activity Description	Date/Time	Cht #	Rate bbl/min	Volume bbl		Pressure psig		Comments
				Stage	Total	Tubing	Casing	
Pump Lead Cement	01/14/2011 08:54		5	444	444		260.0	1070 SKS 12.3 PPG 2.33 YIELD 12.62 GAL/SK CUT LEAD CEMENT SHORT BY 350 SKS AS PER COMPANY REP USED 2 BOXES TUFF FIBER HAD DELIVERY ISSUES WITH BIN #10856464 NOT MOVING CEMENT FLUENTLY
Pump Tail Cement	01/14/2011 10:35		5	59	59		245.0	160 SKS 12.8 PPG 2.07 YIELD 10.67 GAL/SK
Shutdown	01/14/2011 11:01							
Drop Plug	01/14/2011 11:01							PLUG AWAY NO PROBLEMS
Pump Displacement	01/14/2011 11:03		5	206.1	206.1		540.0	FRESH WATER GOT 20 BBLS CEMENT TO SURFACE BETWEEN 80 BBLS GONE AND 100 BBLS GONE THEN LOST RETURNS
Slow Rate	01/14/2011 11:44		2	191.1	191.1		395.0	
Bump Plug	01/14/2011 11:50		2	206.1	206.1		943.0	
Check Floats	01/14/2011 11:56							FLOATS HELD
Other	01/14/2011 11:58						1500.0	CASING TEST HOLD PRESSURE FOR 30 MINUTES
Other	01/14/2011 12:38		2	10	10			10 BBLS SUGAR WATER TO CLEAR PARASITE STRING
End Job	01/14/2011 12:44							HAD CIRCULATION INTO LAST H2O SPACER THEN LOST RETURNS UNTIL END OF LEAD CEMENT HAD RETURNS UNTIL 100 BBLS GONE DISPLACEMENT LOST RETURNS AFTER THAT
Start Job	01/14/2011 13:57							TOPOUT # 1

Cementing Job Log

Activity Description	Date/Time	Cht #	Rate bbl/ min	Volume bbl		Pressure psig		Comments
				Stage	Total	Tubing	Casing	
Other	01/14/2011 13:57		1	0.5	0.5		11.0	FILL LINES
Pump Cement	01/14/2011 14:02		1.6	36	36		27.0	36 BBLS CEMENT PUMPED @ 12.5 PPG 1.97 YIELD 10.96 GAL/SK 103 SKS CEMENT USED
End Job	01/14/2011 14:24							CEMENT TO SURFACE NOT FALLING BACK
Pre-Rig Down Safety Meeting	01/14/2011 15:30							ALL HES EMPLOYEES
Rig-Down Equipment	01/14/2011 15:50							
Pre-Convoy Safety Meeting	01/14/2011 17:30							ALL HES EMPLOYEES
Crew Leave Location	01/14/2011 18:00							THANK YOU FOR USING HALLIBURTON DUSTIN SMITH AND CREW

OXY

CC 697-08-47A 9 5/8 SURFACE



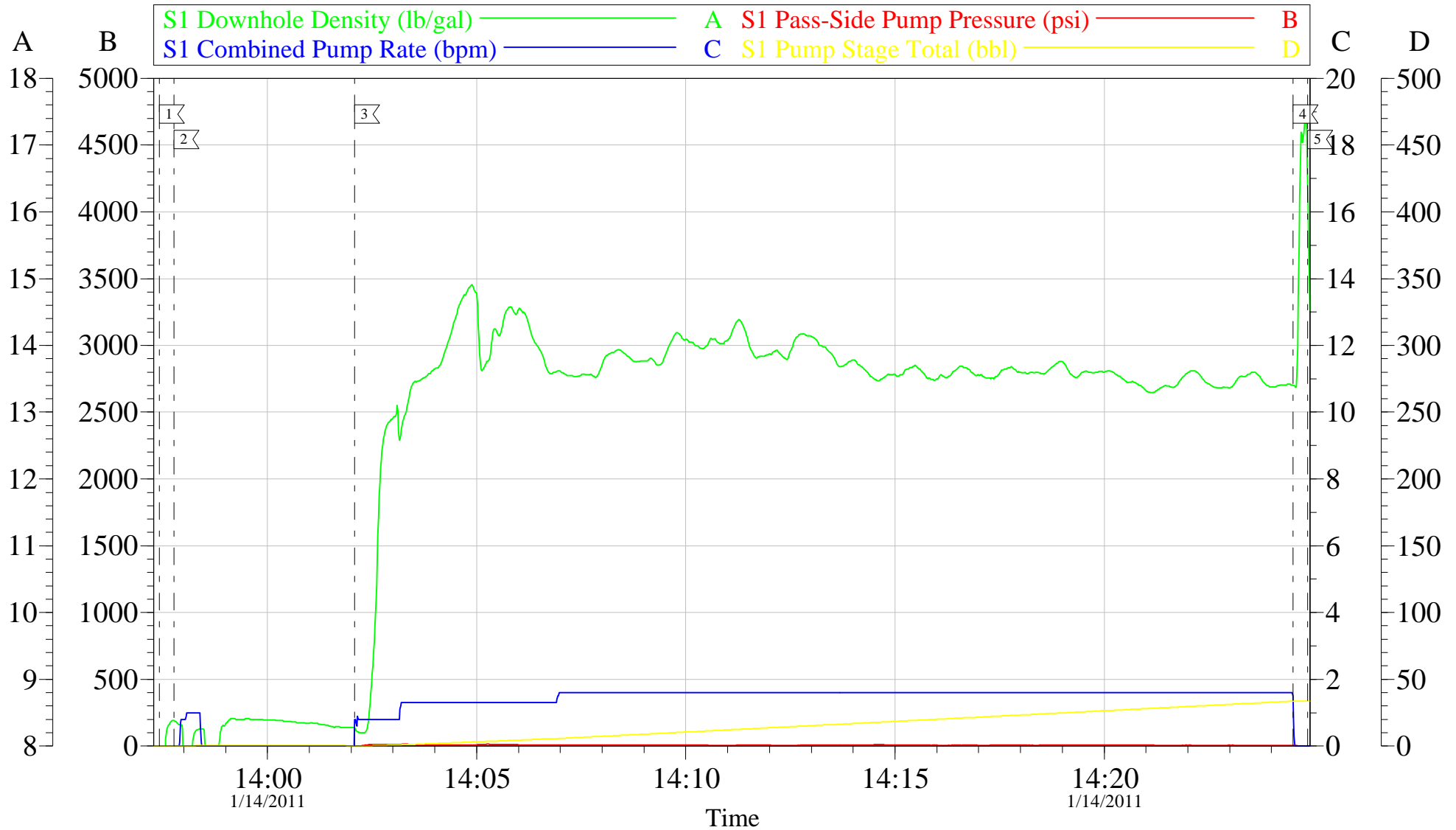
Local Event Log			
1	START JOB	08:34:54	2
2	TEST LINES	08:35:52	3
3	PUMP H2O	08:40:09	4
4	PUMP GELLED SPACER	08:45:45	5
5	PUMP H2O	08:49:42	6
6	PUMP LEAD CEMENT	08:54:20	7
7	PUMP TAIL CEMENT	10:35:55	8
8	SHUTDOWN/ DROP PLUG	11:01:18	9
9	PUMP DISPLACEMENT	11:03:16	10
10	SLOW RATE	11:44:31	11
11	BUMP PLUG	11:50:47	12
12	CHECK FLOATS	11:56:23	13
13	PRESSURE TEST CASING	11:58:01	14
14	RELEASE PRESSURE	12:30:54	15
15	CLEAR PARASITE STRING	12:38:25	16
16	END JOB	12:44:35	

Customer: OXY	Job Date: 14-Jan-2011	Sales Order #: 7842742
Well Description: CC 697-08-47A	Job Type: 9 5/8 SURFACE	ADC Used: YES
Company Rep: VICTOR BENEVIDES	Cement Supervisor: DUSTIN SMITH	Elite #: 7 RYAN WYCOFF

OptiCem v6.4.8
14-Jan-11 12:47

OXY

CC 697-08-47A TOPOUT # 1



Customer: OXY	Job Date: 14-Jan-2011	Sales Order #: 7842742
Well Description: CC 697-08-47A	Job Type: TOPOUT	ADC Used: YES
Company Rep: VICTOR BENEVIDES	Cement Supervisor: DUSTIN SMITH	Elite #: 7 RYAN WYCOFF