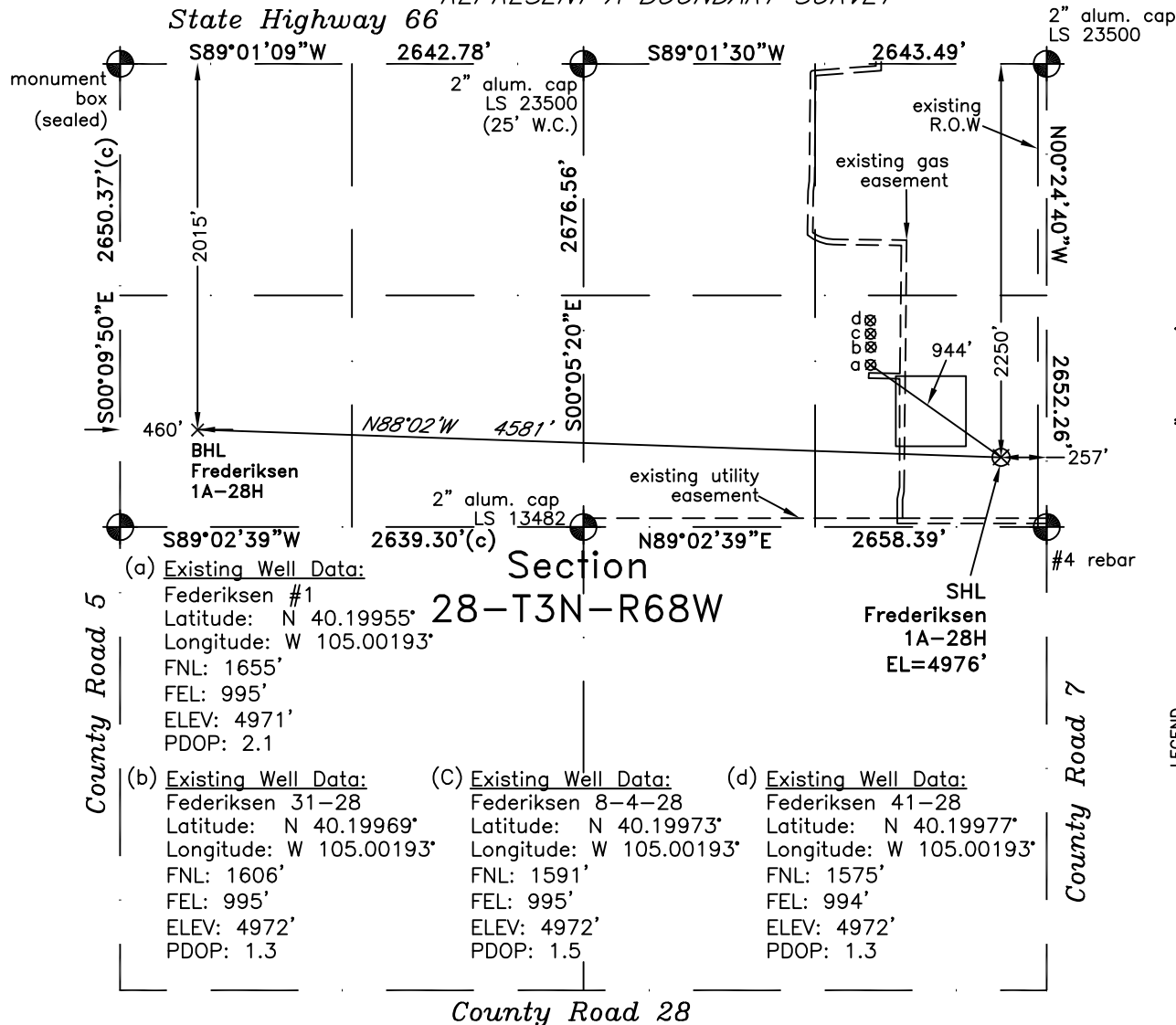


PLS Group, LLC
109 Coronado Ct. - Bldg. 7
Fort Collins, Colorado 80525

WELL LOCATION CERTIFICATE

THIS MAP DOES NOT
REPRESENT A BOUNDARY SURVEY

State Highway 66



Scale 1" = 1000'
1000
approximate scale

LEGEND
- found survey monument
- calculated dimension
(c)

In accordance with a request from Dave Bale of EnCana Oil & Gas (USA) Inc., PLS Group, LLC has determined the location of the **Frederiksen 1A-28H** well site to be SHL 2250' FNL and 257' FEL (BHL 2015' FNL and 460' FWL as measured at ninety (90) degrees from the section lines of Section 28, Township 3 North, Range 68 West of the 6th Principal Meridian, Weld County, Colorado.

Proposed Surface Hole Data:

Latitude: N 40.19794° BHL(40.19844°)
Longitude: W 104.99928° BHL(105.01568°)
PDOP: 2.0

Nearest: Building 501' southeast
Public Road 239' east
Property Line 207' east
Existing Well: Frederiksen #1 944' northwest

Above Ground Utility 283' east
Railroad 3,520' northwest
Well Window: SHL is 214' outside

I hereby certify that this Well Location Certificate was prepared by me or under my direct supervision on 3/8/2011 for and on behalf of EnCana Oil & Gas (USA) Inc. That it is not a Land Survey Plat or an Improvement Survey Plat and that it is not to be relied upon for establishment of fences, buildings, or other future improvement lines.

Notes:

- 1) Bearings and distances based on NAD 83 Colorado North State Plane Coordinates using RTK GPS observations taken 2/2/11 by operator Craig Burke.
- 2) Conversion factor to ground (1.000278080).
- 3) Elevations based on NAVD 88 GPS heights and Geoid 2003 corrections.
- 4) See improvement map for visible improvements within 400 feet.
- 5) The surface use is agricultural field.

NOTICE: According to Colorado law you must commence any legal action based upon any defect in this W.L.C. within three years after you first discover such defect. In no event may any action based upon any defect in this W.L.C. be commenced more than ten years from this said date of the certification shown hereon.

John Robert McGehee LS#38219
Well: Frederiksen 1A-28H WLC