

CONFIDENTIALITY NOTES:

The information contained in this plat is legally privileged and confidential information intended only for the use of the recipients. If you are not the intended recipients, you are hereby notified that any use, dissemination, distribution or copying of this information is strictly prohibited.



**WILLIAM H. SMITH
& ASSOCIATES P.C.**
SURVEYING CONSULTANTS

350 EAST SECOND NORTH PHONE: 307-875-3638
GREEN RIVER, WY 307-875-3639
www.whsmithpc.com

DRAWN BY: CED

CHECKED BY: WHD

PROJECT NO: 762321A

JOB NO: 2011001

REVISIONS:

LEGEND

400' PERIMETER ---
PROPOSED ACCESS ---

LOCATION:

CROW VALLEY
7-62-32-1A
WITHIN THE SE/4
SE/4 SECTION 32,
T 7 N, R 62 W,
6TH PM.
WELD COUNTY,
COLORADO

MARATHON OIL COMPANY
PO BOX 3128, HOUSTON TX, 77253
5555 SAN FELIPE, HOUSTON TX, 77056

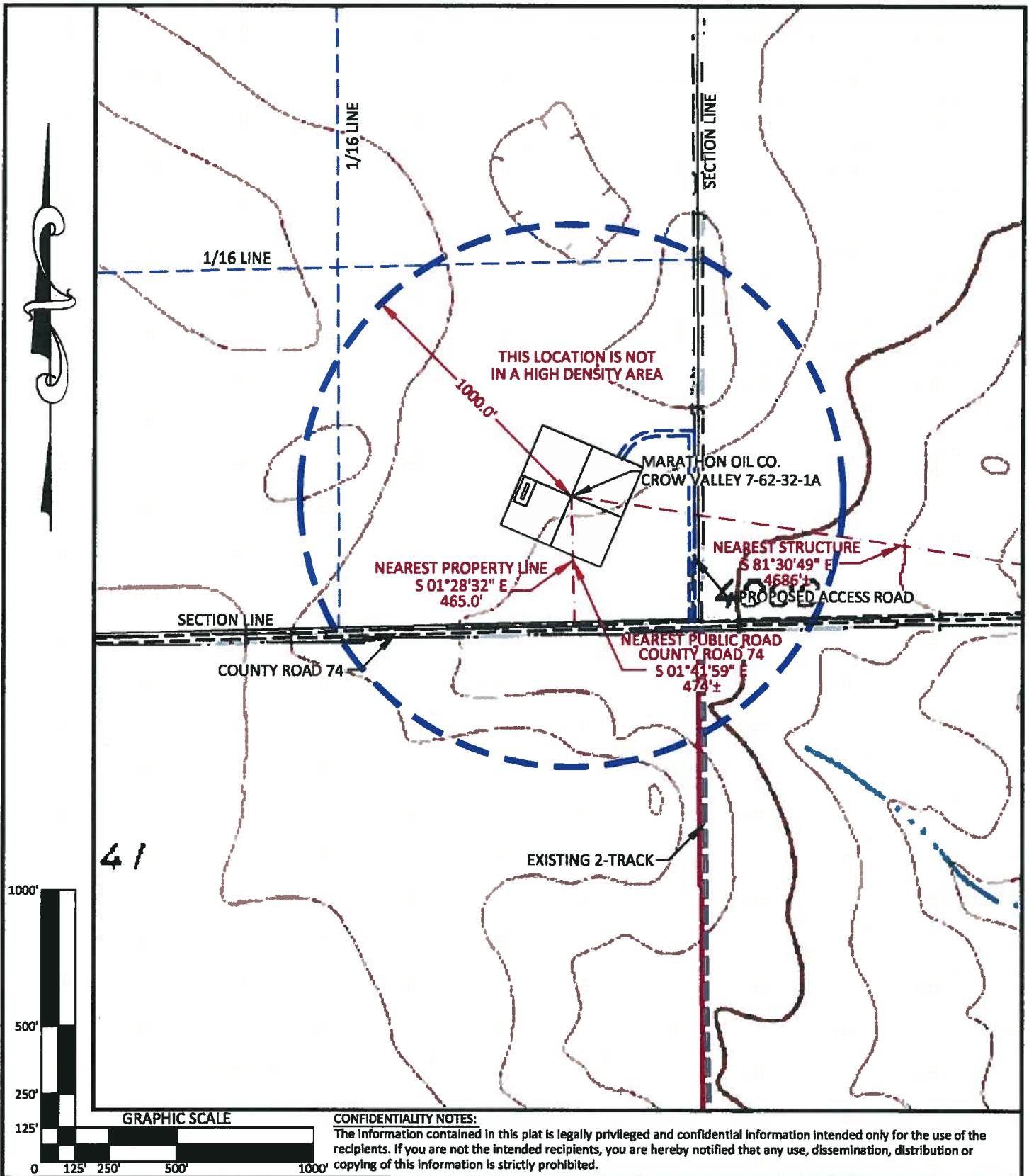
LOCATION DRAWING

SCALE: 1"=200'

EXHIBIT "C"

DATE: 02/27/2011

SHEET 2 OF 11



CONFIDENTIALITY NOTES:

The Information contained in this plat is legally privileged and confidential information intended only for the use of the recipients. If you are not the intended recipients, you are hereby notified that any use, dissemination, distribution or copying of this information is strictly prohibited.



**WILLIAM H. SMITH
& ASSOCIATES P.C.**

SURVEYING CONSULTANTS

350 EAST SECOND NORTH PHONE: 307-875-3638
GREEN RIVER, WY 307-875-3639
www.whsmithpc.com

DRAWN BY: CED

CHECKED BY: WHD

PROJECT NO: 762321A

JOB NO: 2011001

REVISIONS:

LEGEND

1000' RADIUS ———
PROPOSED ACCESS ———
EXISTING 2-TRACK ———

LOCATION:

CROW VALLEY
7-62-32-1A
WITHIN THE SE/4
SE/4 SECTION 32,
T 7 N, R 62 W,
6TH PM.
WELD COUNTY,
COLORADO

MARATHON OIL COMPANY
PO BOX 3128, HOUSTON TX, 77253
5555 SAN FELIPE, HOUSTON TX, 77056

CULTURE MAP

SCALE: 1"=500'

EXHIBIT "H"

DATE: 02/27/2011

SHEET 7 OF 11