

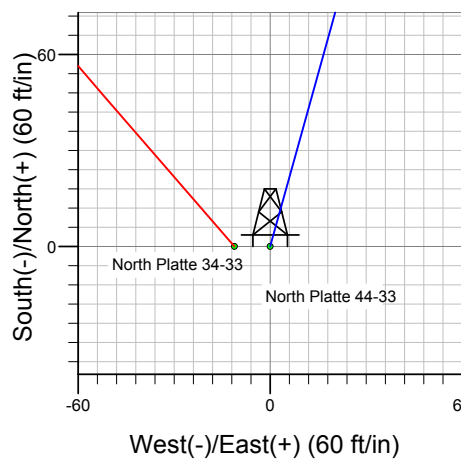
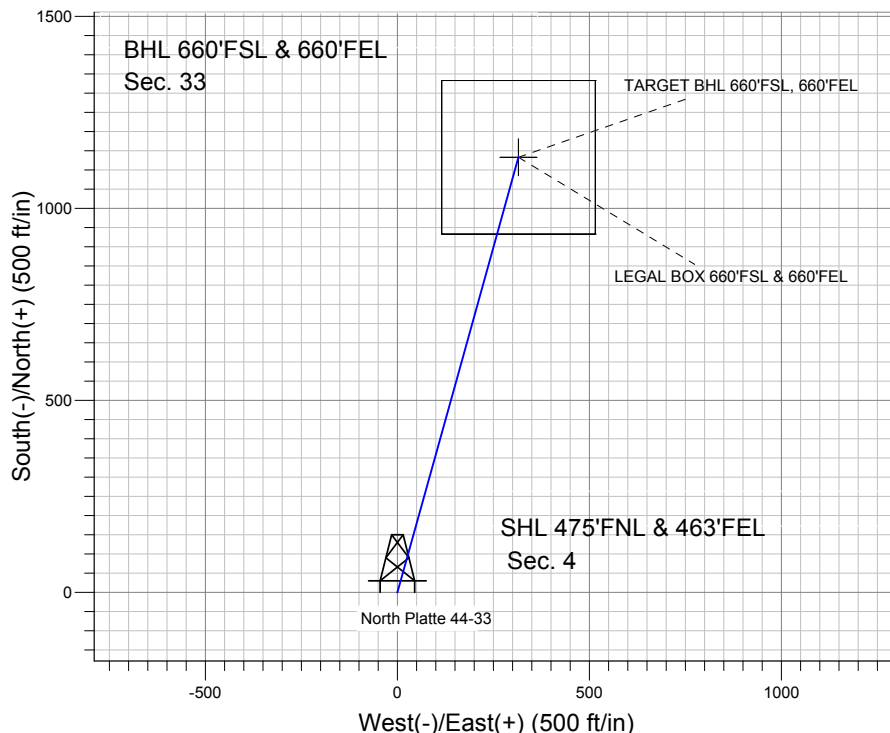
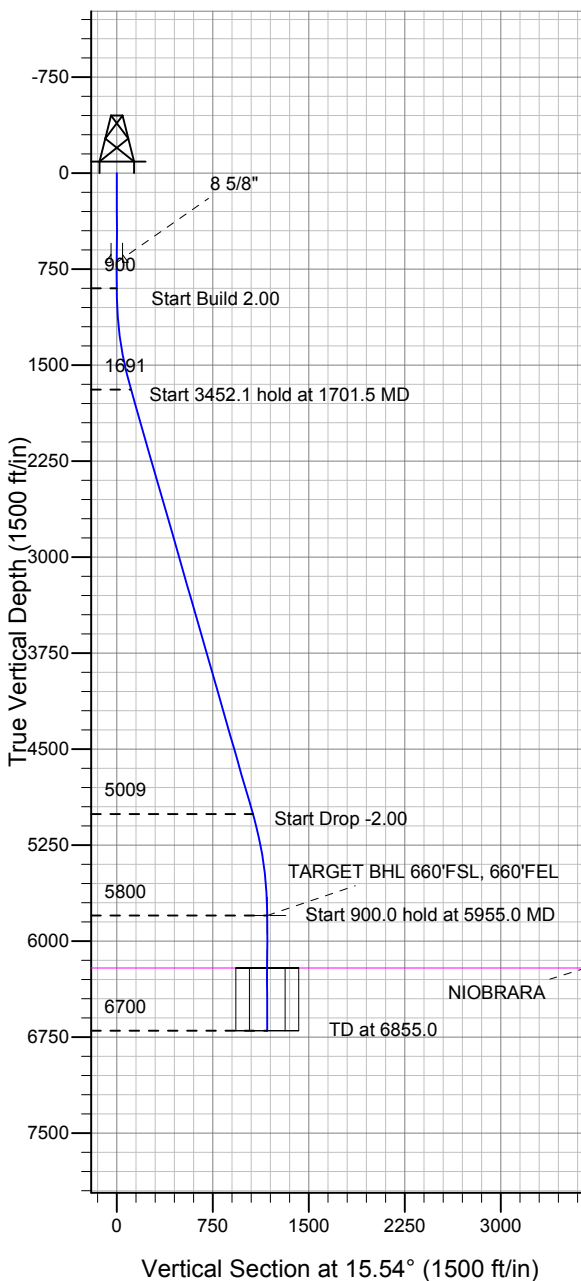
Well Name: North Platte 44-33

Surface Location: Latham 41-4 Pad Sec.4-T4N-R63W
 North American Datum 1983 US State Plane 1983 Colorado Northern Zone

Ground Elevation: 4535.3

+N/-S +E/-W Northing Easting Latitude Longitude Slot
 0.0 0.0 1371184.97 3296861.57 40° 20' 50.676 N 04° 26' 5.676 W
 Original Well Elev WELL @ 4548.3ft (Original Well Elev)

BONANZA CREEK ENERGY OPERATING



Latham 41-4 Pad Sec.4-T4N-R63W
 North Platte 44-33
 Plan #1 (1-28-11)
 15:14, January 28 2011



Azimuths to True North
 Magnetic North: 8.73°

Magnetic Field
 Strength: 53181.7snT
 Dip Angle: 67.08°
 Date: 1/28/2011
 Model: IGRF2010

WELLBORE TARGET DETAILS (LAT/LONG)

Name	TVD	+N/-S	+E/-W	Latitude	Longitude	Shape
TARGET BHL 660'FSL, 660'FEL	5800.0	1133.0	315.0	40° 21' 1.872 N	104° 26' 1.608 W	Point
LEGAL BOX 660'FSL & 660'FEL	6210.0	1133.0	315.0	40° 21' 1.872 N	104° 26' 1.607 W	Rectangle (Sides: L400.0 W400.0)

SECTION DETAILS

Sec	MD	Inc	Azi	TVD	+N/-S	+E/-W	DLeg	TFace	VSec	Target
1	0.0	0.00	0.00	0.0	0.0	0.0	0.00	0.00	0.0	
2	900.0	0.00	0.00	900.0	0.0	0.0	0.00	0.00	0.0	
3	1701.5	16.03	15.54	1691.0	107.3	29.8	2.00	15.54	111.4	
4	5153.6	16.03	15.54	5009.0	1025.7	285.1	0.00	0.00	1064.6	
5	5955.0	0.00	0.00	5800.0	1133.0	315.0	2.00	180.00	1176.0	TARGET BHL 660'FSL, 660'FEL
6	6855.0	0.00	0.00	6700.0	1133.0	315.0	0.00	0.00	1176.0	



Directional

BONANZA CREEK ENERGY OPERATING

SEC.4-T4N-R63W

Latham 41-4 Pad Sec.4-T4N-R63W

North Platte 44-33

Wellbore #1

Plan: Plan #1 (1-28-11)

Standard Planning Report

28 January, 2011

Plan Sections										
Measured Depth (ft)	Inclination (°)	Azimuth (°)	Vertical Depth (ft)	+N/-S (ft)	+E/-W (ft)	Dogleg Rate (°/100ft)	Build Rate (°/100ft)	Turn Rate (°/100ft)	TFO (°)	Target
0.0	0.00	0.00	0.0	0.0	0.0	0.00	0.00	0.00	0.00	
900.0	0.00	0.00	900.0	0.0	0.0	0.00	0.00	0.00	0.00	
1,701.5	16.03	15.54	1,691.0	107.3	29.8	2.00	2.00	0.00	15.54	
5,153.6	16.03	15.54	5,009.0	1,025.7	285.1	0.00	0.00	0.00	0.00	
5,955.0	0.00	0.00	5,800.0	1,133.0	315.0	2.00	-2.00	0.00	180.00	TARGET BHL 660°
6,855.0	0.00	0.00	6,700.0	1,133.0	315.0	0.00	0.00	0.00	0.00	

Database:	Landmark	Local Co-ordinate Reference:	Well North Platte 44-33
Company:	BONANZA CREEK ENERGY OPERATING	TVD Reference:	WELL @ 4548.3ft (Original Well Elev)
Project:	SEC.4-T4N-R63W	MD Reference:	WELL @ 4548.3ft (Original Well Elev)
Site:	Latham 41-4 Pad Sec.4-T4N-R63W	North Reference:	True
Well:	North Platte 44-33	Survey Calculation Method:	Minimum Curvature
Wellbore:	Wellbore #1		
Design:	Plan #1 (1-28-11)		

Planned Survey									
Measured Depth (ft)	Inclination (°)	Azimuth (°)	Vertical Depth (ft)	+N/-S (ft)	+E/-W (ft)	Vertical Section (ft)	Dogleg Rate (°/100ft)	Build Rate (°/100ft)	Turn Rate (°/100ft)
0.0	0.00	0.00	0.0	0.0	0.0	0.0	0.00	0.00	0.00
40.0	0.00	0.00	40.0	0.0	0.0	0.0	0.00	0.00	0.00
80.0	0.00	0.00	80.0	0.0	0.0	0.0	0.00	0.00	0.00
120.0	0.00	0.00	120.0	0.0	0.0	0.0	0.00	0.00	0.00
160.0	0.00	0.00	160.0	0.0	0.0	0.0	0.00	0.00	0.00
200.0	0.00	0.00	200.0	0.0	0.0	0.0	0.00	0.00	0.00
240.0	0.00	0.00	240.0	0.0	0.0	0.0	0.00	0.00	0.00
280.0	0.00	0.00	280.0	0.0	0.0	0.0	0.00	0.00	0.00
320.0	0.00	0.00	320.0	0.0	0.0	0.0	0.00	0.00	0.00
360.0	0.00	0.00	360.0	0.0	0.0	0.0	0.00	0.00	0.00
400.0	0.00	0.00	400.0	0.0	0.0	0.0	0.00	0.00	0.00
440.0	0.00	0.00	440.0	0.0	0.0	0.0	0.00	0.00	0.00
480.0	0.00	0.00	480.0	0.0	0.0	0.0	0.00	0.00	0.00
520.0	0.00	0.00	520.0	0.0	0.0	0.0	0.00	0.00	0.00
560.0	0.00	0.00	560.0	0.0	0.0	0.0	0.00	0.00	0.00
600.0	0.00	0.00	600.0	0.0	0.0	0.0	0.00	0.00	0.00
640.0	0.00	0.00	640.0	0.0	0.0	0.0	0.00	0.00	0.00
680.0	0.00	0.00	680.0	0.0	0.0	0.0	0.00	0.00	0.00
697.0	0.00	0.00	697.0	0.0	0.0	0.0	0.00	0.00	0.00
8 5/8"									
720.0	0.00	0.00	720.0	0.0	0.0	0.0	0.00	0.00	0.00
760.0	0.00	0.00	760.0	0.0	0.0	0.0	0.00	0.00	0.00
800.0	0.00	0.00	800.0	0.0	0.0	0.0	0.00	0.00	0.00
840.0	0.00	0.00	840.0	0.0	0.0	0.0	0.00	0.00	0.00
880.0	0.00	0.00	880.0	0.0	0.0	0.0	0.00	0.00	0.00
900.0	0.00	0.00	900.0	0.0	0.0	0.0	0.00	0.00	0.00
920.0	0.40	15.54	920.0	0.1	0.0	0.1	2.00	2.00	0.00
960.0	1.20	15.54	960.0	0.6	0.2	0.6	2.00	2.00	0.00
1,000.0	2.00	15.54	1,000.0	1.7	0.5	1.7	2.00	2.00	0.00
1,040.0	2.80	15.54	1,039.9	3.3	0.9	3.4	2.00	2.00	0.00
1,080.0	3.60	15.54	1,079.9	5.4	1.5	5.7	2.00	2.00	0.00
1,120.0	4.40	15.54	1,119.8	8.1	2.3	8.4	2.00	2.00	0.00
1,160.0	5.20	15.54	1,159.6	11.4	3.2	11.8	2.00	2.00	0.00
1,200.0	6.00	15.54	1,199.5	15.1	4.2	15.7	2.00	2.00	0.00
1,240.0	6.80	15.54	1,239.2	19.4	5.4	20.2	2.00	2.00	0.00
1,280.0	7.60	15.54	1,278.9	24.2	6.7	25.2	2.00	2.00	0.00
1,320.0	8.40	15.54	1,318.5	29.6	8.2	30.7	2.00	2.00	0.00
1,360.0	9.20	15.54	1,358.0	35.5	9.9	36.9	2.00	2.00	0.00
1,400.0	10.00	15.54	1,397.5	41.9	11.7	43.5	2.00	2.00	0.00
1,440.0	10.80	15.54	1,436.8	48.9	13.6	50.7	2.00	2.00	0.00
1,480.0	11.60	15.54	1,476.0	56.4	15.7	58.5	2.00	2.00	0.00
1,520.0	12.40	15.54	1,515.2	64.4	17.9	66.8	2.00	2.00	0.00
1,560.0	13.20	15.54	1,554.2	72.9	20.3	75.7	2.00	2.00	0.00
1,600.0	14.00	15.54	1,593.1	82.0	22.8	85.1	2.00	2.00	0.00
1,640.0	14.80	15.54	1,631.8	91.6	25.5	95.0	2.00	2.00	0.00
1,680.0	15.60	15.54	1,670.4	101.7	28.3	105.5	2.00	2.00	0.00
1,701.5	16.03	15.54	1,691.0	107.3	29.8	111.4	2.00	2.00	0.00
1,720.0	16.03	15.54	1,708.9	112.2	31.2	116.5	0.00	0.00	0.00
1,760.0	16.03	15.54	1,747.3	122.9	34.2	127.5	0.00	0.00	0.00
1,800.0	16.03	15.54	1,785.8	133.5	37.1	138.6	0.00	0.00	0.00
1,840.0	16.03	15.54	1,824.2	144.2	40.1	149.6	0.00	0.00	0.00
1,880.0	16.03	15.54	1,862.6	154.8	43.0	160.7	0.00	0.00	0.00
1,920.0	16.03	15.54	1,901.1	165.5	46.0	171.7	0.00	0.00	0.00
1,960.0	16.03	15.54	1,939.5	176.1	49.0	182.8	0.00	0.00	0.00

Database:	Landmark	Local Co-ordinate Reference:	Well North Platte 44-33
Company:	BONANZA CREEK ENERGY OPERATING	TVD Reference:	WELL @ 4548.3ft (Original Well Elev)
Project:	SEC.4-T4N-R63W	MD Reference:	WELL @ 4548.3ft (Original Well Elev)
Site:	Latham 41-4 Pad Sec.4-T4N-R63W	North Reference:	True
Well:	North Platte 44-33	Survey Calculation Method:	Minimum Curvature
Wellbore:	Wellbore #1		
Design:	Plan #1 (1-28-11)		

Planned Survey									
Measured Depth (ft)	Inclination (°)	Azimuth (°)	Vertical Depth (ft)	+N/-S (ft)	+E/-W (ft)	Vertical Section (ft)	Dogleg Rate (°/100ft)	Build Rate (°/100ft)	Turn Rate (°/100ft)
2,000.0	16.03	15.54	1,978.0	186.7	51.9	193.8	0.00	0.00	0.00
2,040.0	16.03	15.54	2,016.4	197.4	54.9	204.9	0.00	0.00	0.00
2,080.0	16.03	15.54	2,054.9	208.0	57.8	215.9	0.00	0.00	0.00
2,120.0	16.03	15.54	2,093.3	218.7	60.8	226.9	0.00	0.00	0.00
2,160.0	16.03	15.54	2,131.8	229.3	63.7	238.0	0.00	0.00	0.00
2,200.0	16.03	15.54	2,170.2	239.9	66.7	249.0	0.00	0.00	0.00
2,240.0	16.03	15.54	2,208.6	250.6	69.7	260.1	0.00	0.00	0.00
2,280.0	16.03	15.54	2,247.1	261.2	72.6	271.1	0.00	0.00	0.00
2,320.0	16.03	15.54	2,285.5	271.9	75.6	282.2	0.00	0.00	0.00
2,360.0	16.03	15.54	2,324.0	282.5	78.5	293.2	0.00	0.00	0.00
2,400.0	16.03	15.54	2,362.4	293.1	81.5	304.3	0.00	0.00	0.00
2,440.0	16.03	15.54	2,400.9	303.8	84.4	315.3	0.00	0.00	0.00
2,480.0	16.03	15.54	2,439.3	314.4	87.4	326.4	0.00	0.00	0.00
2,520.0	16.03	15.54	2,477.8	325.1	90.4	337.4	0.00	0.00	0.00
2,560.0	16.03	15.54	2,516.2	335.7	93.3	348.4	0.00	0.00	0.00
2,600.0	16.03	15.54	2,554.7	346.4	96.3	359.5	0.00	0.00	0.00
2,640.0	16.03	15.54	2,593.1	357.0	99.2	370.5	0.00	0.00	0.00
2,680.0	16.03	15.54	2,631.5	367.6	102.2	381.6	0.00	0.00	0.00
2,720.0	16.03	15.54	2,670.0	378.3	105.2	392.6	0.00	0.00	0.00
2,760.0	16.03	15.54	2,708.4	388.9	108.1	403.7	0.00	0.00	0.00
2,800.0	16.03	15.54	2,746.9	399.6	111.1	414.7	0.00	0.00	0.00
2,840.0	16.03	15.54	2,785.3	410.2	114.0	425.8	0.00	0.00	0.00
2,880.0	16.03	15.54	2,823.8	420.8	117.0	436.8	0.00	0.00	0.00
2,920.0	16.03	15.54	2,862.2	431.5	119.9	447.8	0.00	0.00	0.00
2,960.0	16.03	15.54	2,900.7	442.1	122.9	458.9	0.00	0.00	0.00
3,000.0	16.03	15.54	2,939.1	452.8	125.9	469.9	0.00	0.00	0.00
3,040.0	16.03	15.54	2,977.5	463.4	128.8	481.0	0.00	0.00	0.00
3,080.0	16.03	15.54	3,016.0	474.1	131.8	492.0	0.00	0.00	0.00
3,120.0	16.03	15.54	3,054.4	484.7	134.7	503.1	0.00	0.00	0.00
3,160.0	16.03	15.54	3,092.9	495.3	137.7	514.1	0.00	0.00	0.00
3,200.0	16.03	15.54	3,131.3	506.0	140.7	525.2	0.00	0.00	0.00
3,240.0	16.03	15.54	3,169.8	516.6	143.6	536.2	0.00	0.00	0.00
3,280.0	16.03	15.54	3,208.2	527.3	146.6	547.3	0.00	0.00	0.00
3,320.0	16.03	15.54	3,246.7	537.9	149.5	558.3	0.00	0.00	0.00
3,360.0	16.03	15.54	3,285.1	548.5	152.5	569.3	0.00	0.00	0.00
3,400.0	16.03	15.54	3,323.6	559.2	155.4	580.4	0.00	0.00	0.00
3,440.0	16.03	15.54	3,362.0	569.8	158.4	591.4	0.00	0.00	0.00
3,480.0	16.03	15.54	3,400.4	580.5	161.4	602.5	0.00	0.00	0.00
3,520.0	16.03	15.54	3,438.9	591.1	164.3	613.5	0.00	0.00	0.00
3,560.0	16.03	15.54	3,477.3	601.8	167.3	624.6	0.00	0.00	0.00
3,600.0	16.03	15.54	3,515.8	612.4	170.2	635.6	0.00	0.00	0.00
3,640.0	16.03	15.54	3,554.2	623.0	173.2	646.7	0.00	0.00	0.00
3,680.0	16.03	15.54	3,592.7	633.7	176.2	657.7	0.00	0.00	0.00
3,720.0	16.03	15.54	3,631.1	644.3	179.1	668.7	0.00	0.00	0.00
3,760.0	16.03	15.54	3,669.6	655.0	182.1	679.8	0.00	0.00	0.00
3,800.0	16.03	15.54	3,708.0	665.6	185.0	690.8	0.00	0.00	0.00
3,840.0	16.03	15.54	3,746.4	676.2	188.0	701.9	0.00	0.00	0.00
3,880.0	16.03	15.54	3,784.9	686.9	190.9	712.9	0.00	0.00	0.00
3,920.0	16.03	15.54	3,823.3	697.5	193.9	724.0	0.00	0.00	0.00
3,960.0	16.03	15.54	3,861.8	708.2	196.9	735.0	0.00	0.00	0.00
4,000.0	16.03	15.54	3,900.2	718.8	199.8	746.1	0.00	0.00	0.00
4,040.0	16.03	15.54	3,938.7	729.4	202.8	757.1	0.00	0.00	0.00
4,080.0	16.03	15.54	3,977.1	740.1	205.7	768.2	0.00	0.00	0.00
4,120.0	16.03	15.54	4,015.6	750.7	208.7	779.2	0.00	0.00	0.00

Database:	Landmark	Local Co-ordinate Reference:	Well North Platte 44-33
Company:	BONANZA CREEK ENERGY OPERATING	TVD Reference:	WELL @ 4548.3ft (Original Well Elev)
Project:	SEC.4-T4N-R63W	MD Reference:	WELL @ 4548.3ft (Original Well Elev)
Site:	Latham 41-4 Pad Sec.4-T4N-R63W	North Reference:	True
Well:	North Platte 44-33	Survey Calculation Method:	Minimum Curvature
Wellbore:	Wellbore #1		
Design:	Plan #1 (1-28-11)		

Planned Survey									
Measured Depth (ft)	Inclination (°)	Azimuth (°)	Vertical Depth (ft)	+N/-S (ft)	+E/-W (ft)	Vertical Section (ft)	Dogleg Rate (°/100ft)	Build Rate (°/100ft)	Turn Rate (°/100ft)
4,160.0	16.03	15.54	4,054.0	761.4	211.7	790.2	0.00	0.00	0.00
4,200.0	16.03	15.54	4,092.4	772.0	214.6	801.3	0.00	0.00	0.00
4,240.0	16.03	15.54	4,130.9	782.7	217.6	812.3	0.00	0.00	0.00
4,280.0	16.03	15.54	4,169.3	793.3	220.5	823.4	0.00	0.00	0.00
4,320.0	16.03	15.54	4,207.8	803.9	223.5	834.4	0.00	0.00	0.00
4,360.0	16.03	15.54	4,246.2	814.6	226.4	845.5	0.00	0.00	0.00
4,400.0	16.03	15.54	4,284.7	825.2	229.4	856.5	0.00	0.00	0.00
4,440.0	16.03	15.54	4,323.1	835.9	232.4	867.6	0.00	0.00	0.00
4,480.0	16.03	15.54	4,361.6	846.5	235.3	878.6	0.00	0.00	0.00
4,520.0	16.03	15.54	4,400.0	857.1	238.3	889.6	0.00	0.00	0.00
4,560.0	16.03	15.54	4,438.5	867.8	241.2	900.7	0.00	0.00	0.00
4,600.0	16.03	15.54	4,476.9	878.4	244.2	911.7	0.00	0.00	0.00
4,640.0	16.03	15.54	4,515.3	889.1	247.1	922.8	0.00	0.00	0.00
4,680.0	16.03	15.54	4,553.8	899.7	250.1	933.8	0.00	0.00	0.00
4,720.0	16.03	15.54	4,592.2	910.4	253.1	944.9	0.00	0.00	0.00
4,760.0	16.03	15.54	4,630.7	921.0	256.0	955.9	0.00	0.00	0.00
4,800.0	16.03	15.54	4,669.1	931.6	259.0	967.0	0.00	0.00	0.00
4,840.0	16.03	15.54	4,707.6	942.3	261.9	978.0	0.00	0.00	0.00
4,880.0	16.03	15.54	4,746.0	952.9	264.9	989.1	0.00	0.00	0.00
4,920.0	16.03	15.54	4,784.5	963.6	267.9	1,000.1	0.00	0.00	0.00
4,960.0	16.03	15.54	4,822.9	974.2	270.8	1,011.1	0.00	0.00	0.00
5,000.0	16.03	15.54	4,861.3	984.8	273.8	1,022.2	0.00	0.00	0.00
5,040.0	16.03	15.54	4,899.8	995.5	276.7	1,033.2	0.00	0.00	0.00
5,080.0	16.03	15.54	4,938.2	1,006.1	279.7	1,044.3	0.00	0.00	0.00
5,120.0	16.03	15.54	4,976.7	1,016.8	282.6	1,055.3	0.00	0.00	0.00
5,153.6	16.03	15.54	5,009.0	1,025.7	285.1	1,064.6	0.00	0.00	0.00
5,160.0	15.90	15.54	5,015.1	1,027.4	285.6	1,066.4	2.00	-2.00	0.00
5,200.0	15.10	15.54	5,053.7	1,037.7	288.5	1,077.0	2.00	-2.00	0.00
5,240.0	14.30	15.54	5,092.4	1,047.5	291.2	1,087.2	2.00	-2.00	0.00
5,280.0	13.50	15.54	5,131.2	1,056.7	293.8	1,096.8	2.00	-2.00	0.00
5,320.0	12.70	15.54	5,170.1	1,065.5	296.2	1,105.9	2.00	-2.00	0.00
5,360.0	11.90	15.54	5,209.2	1,073.7	298.5	1,114.4	2.00	-2.00	0.00
5,400.0	11.10	15.54	5,248.4	1,081.4	300.6	1,122.4	2.00	-2.00	0.00
5,440.0	10.30	15.54	5,287.7	1,088.5	302.6	1,129.8	2.00	-2.00	0.00
5,480.0	9.50	15.54	5,327.1	1,095.2	304.4	1,136.7	2.00	-2.00	0.00
5,520.0	8.70	15.54	5,366.6	1,101.2	306.1	1,143.0	2.00	-2.00	0.00
5,560.0	7.90	15.54	5,406.2	1,106.8	307.7	1,148.8	2.00	-2.00	0.00
5,600.0	7.10	15.54	5,445.9	1,111.8	309.1	1,154.0	2.00	-2.00	0.00
5,640.0	6.30	15.54	5,485.6	1,116.3	310.3	1,158.7	2.00	-2.00	0.00
5,680.0	5.50	15.54	5,525.4	1,120.3	311.4	1,162.8	2.00	-2.00	0.00
5,720.0	4.70	15.54	5,565.2	1,123.7	312.4	1,166.3	2.00	-2.00	0.00
5,760.0	3.90	15.54	5,605.1	1,126.6	313.2	1,169.3	2.00	-2.00	0.00
5,800.0	3.10	15.54	5,645.0	1,129.0	313.8	1,171.8	2.00	-2.00	0.00
5,840.0	2.30	15.54	5,685.0	1,130.8	314.3	1,173.7	2.00	-2.00	0.00
5,880.0	1.50	15.54	5,725.0	1,132.1	314.7	1,175.0	2.00	-2.00	0.00
5,920.0	0.70	15.54	5,765.0	1,132.8	314.9	1,175.8	2.00	-2.00	0.00
5,955.0	0.00	0.00	5,800.0	1,133.0	315.0	1,176.0	2.00	-2.00	-44.34
TARGET BHL 660°FSL, 660°FEL									
5,960.0	0.00	0.00	5,805.0	1,133.0	315.0	1,176.0	0.00	0.00	0.00
6,000.0	0.00	0.00	5,845.0	1,133.0	315.0	1,176.0	0.00	0.00	0.00
6,040.0	0.00	0.00	5,885.0	1,133.0	315.0	1,176.0	0.00	0.00	0.00
6,080.0	0.00	0.00	5,925.0	1,133.0	315.0	1,176.0	0.00	0.00	0.00
6,120.0	0.00	0.00	5,965.0	1,133.0	315.0	1,176.0	0.00	0.00	0.00
6,160.0	0.00	0.00	6,005.0	1,133.0	315.0	1,176.0	0.00	0.00	0.00

Database:	Landmark	Local Co-ordinate Reference:	Well North Platte 44-33
Company:	BONANZA CREEK ENERGY OPERATING	TVD Reference:	WELL @ 4548.3ft (Original Well Elev)
Project:	SEC.4-T4N-R63W	MD Reference:	WELL @ 4548.3ft (Original Well Elev)
Site:	Latham 41-4 Pad Sec.4-T4N-R63W	North Reference:	True
Well:	North Platte 44-33	Survey Calculation Method:	Minimum Curvature
Wellbore:	Wellbore #1		
Design:	Plan #1 (1-28-11)		

Planned Survey									
Measured Depth (ft)	Inclination (°)	Azimuth (°)	Vertical Depth (ft)	+N/-S (ft)	+E/-W (ft)	Vertical Section (ft)	Dogleg Rate (°/100ft)	Build Rate (°/100ft)	Turn Rate (°/100ft)
6,200.0	0.00	0.00	6,045.0	1,133.0	315.0	1,176.0	0.00	0.00	0.00
6,240.0	0.00	0.00	6,085.0	1,133.0	315.0	1,176.0	0.00	0.00	0.00
6,280.0	0.00	0.00	6,125.0	1,133.0	315.0	1,176.0	0.00	0.00	0.00
6,320.0	0.00	0.00	6,165.0	1,133.0	315.0	1,176.0	0.00	0.00	0.00
6,360.0	0.00	0.00	6,205.0	1,133.0	315.0	1,176.0	0.00	0.00	0.00
6,365.0	0.00	0.00	6,210.0	1,133.0	315.0	1,176.0	0.00	0.00	0.00
NIOBRARA - LEGAL BOX 660'FSL & 660'FEL									
6,400.0	0.00	0.00	6,245.0	1,133.0	315.0	1,176.0	0.00	0.00	0.00
6,440.0	0.00	0.00	6,285.0	1,133.0	315.0	1,176.0	0.00	0.00	0.00
6,480.0	0.00	0.00	6,325.0	1,133.0	315.0	1,176.0	0.00	0.00	0.00
6,520.0	0.00	0.00	6,365.0	1,133.0	315.0	1,176.0	0.00	0.00	0.00
6,560.0	0.00	0.00	6,405.0	1,133.0	315.0	1,176.0	0.00	0.00	0.00
6,600.0	0.00	0.00	6,445.0	1,133.0	315.0	1,176.0	0.00	0.00	0.00
6,640.0	0.00	0.00	6,485.0	1,133.0	315.0	1,176.0	0.00	0.00	0.00
6,680.0	0.00	0.00	6,525.0	1,133.0	315.0	1,176.0	0.00	0.00	0.00
6,720.0	0.00	0.00	6,565.0	1,133.0	315.0	1,176.0	0.00	0.00	0.00
6,760.0	0.00	0.00	6,605.0	1,133.0	315.0	1,176.0	0.00	0.00	0.00
6,800.0	0.00	0.00	6,645.0	1,133.0	315.0	1,176.0	0.00	0.00	0.00
6,840.0	0.00	0.00	6,685.0	1,133.0	315.0	1,176.0	0.00	0.00	0.00
6,855.0	0.00	0.00	6,700.0	1,133.0	315.0	1,176.0	0.00	0.00	0.00

Targets									
Target Name	Dip Angle (°)	Dip Dir. (°)	TVD (ft)	+N/-S (ft)	+E/-W (ft)	Northing (ft)	Easting (ft)	Latitude	Longitude
- hit/miss target									
- Shape									
LEGAL BOX 660'FSL	0.00	0.00	6,210.0	1,133.0	315.0	1,372,321.62	3,297,162.93	40° 21' 1.872 N	104° 26' 1.607 W
- plan hits target center									
- Rectangle (sides W400.0 H400.0 D490.0)									
TARGET BHL 660'FS	0.00	0.00	5,800.0	1,133.0	315.0	1,372,321.63	3,297,162.89	40° 21' 1.872 N	104° 26' 1.608 W
- plan hits target center									
- Point									

Casing Points					
Measured Depth (ft)	Vertical Depth (ft)	Name	Casing Diameter (")	Hole Diameter (")	
697.0	697.0	8 5/8"	8-5/8	12-1/4	

Formations					
Measured Depth (ft)	Vertical Depth (ft)	Name	Lithology	Dip (°)	Dip Direction (°)
6,365.0	6,210.0	NIOBRARA		0.00	



Directional

BONANZA CREEK ENERGY OPERATING

SEC.4-T4N-R63W

Latham 41-4 Pad Sec.4-T4N-R63W

North Platte 44-33

Wellbore #1

Plan #1 (1-28-11)

Anticollision Report

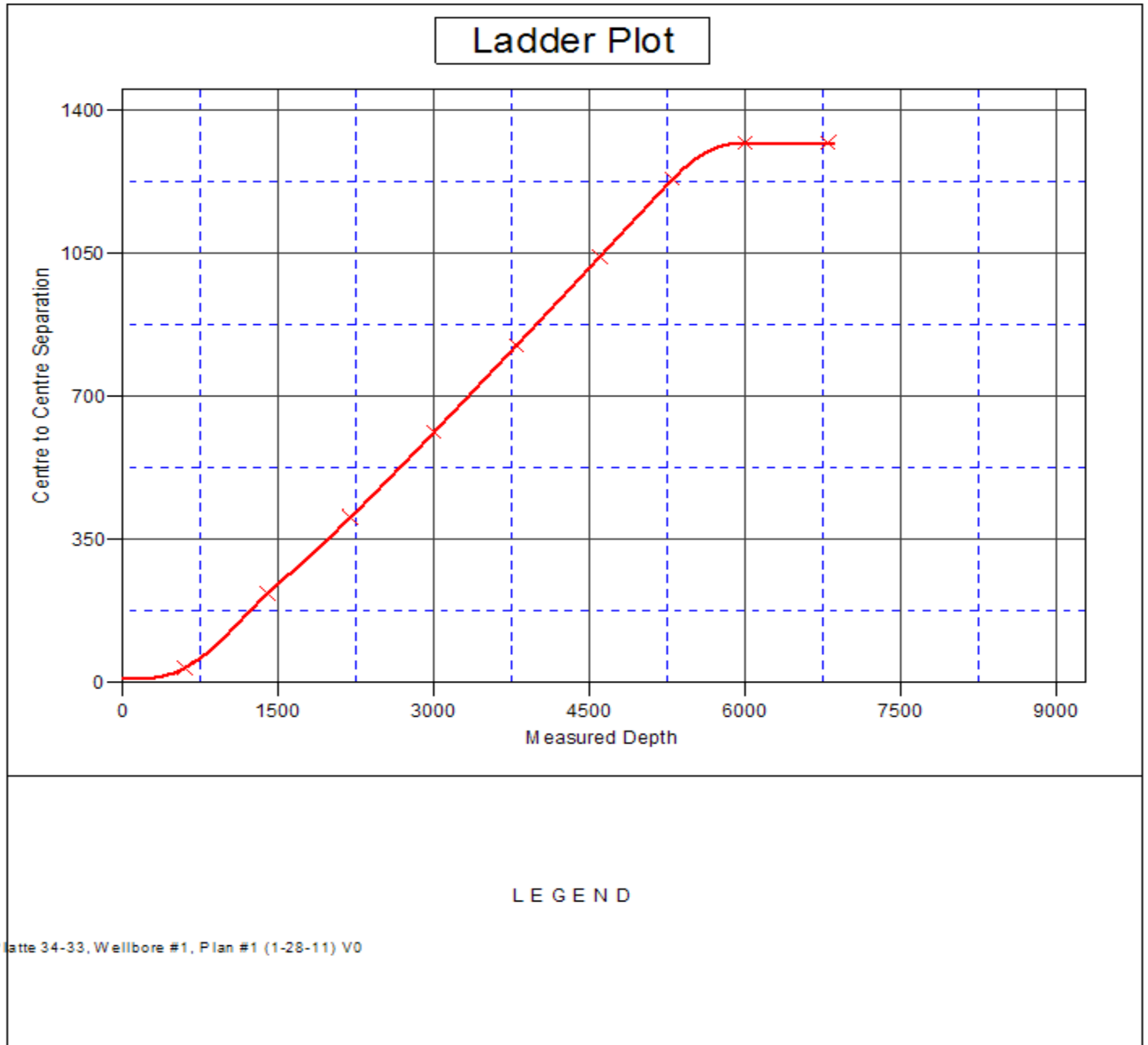
28 January, 2011

Company:	BONANZA CREEK ENERGY OPERATING	Local Co-ordinate Reference:	Well North Platte 44-33
Project:	SEC.4-T4N-R63W	TVD Reference:	WELL @ 4548.3ft (Original Well Elev)
Reference Site:	Latham 41-4 Pad Sec.4-T4N-R63W	MD Reference:	WELL @ 4548.3ft (Original Well Elev)
Site Error:	0.0ft	North Reference:	True
Reference Well:	North Platte 44-33	Survey Calculation Method:	Minimum Curvature
Well Error:	0.0ft	Output errors are at	2.00 sigma
Reference Wellbore	Wellbore #1	Database:	Landmark
Reference Design:	Plan #1 (1-28-11)	Offset TVD Reference:	Offset Datum

Offset Design Latham 41-4 Pad Sec.4-T4N-R63W - North Platte 34-33 - Wellbore #1 - Plan #1 (1-28-11)												Offset Site Error:	0.0ft
Survey Program: 0-MWD												Offset Well Error:	0.0ft
Reference		Offset		Semi Major Axis			Distance						
Measured Depth (ft)	Vertical Depth (ft)	Measured Depth (ft)	Vertical Depth (ft)	Reference (ft)	Offset (ft)	Highside Toolface (°)	Offset Wellbore Centre +N/-S (ft)	+E/-W (ft)	Between Centres (ft)	Between Ellipses (ft)	Minimum Separation (ft)	Separation Factor	Warning
2,300.0	2,266.3	2,225.5	2,156.2	7.1	10.6	-87.24	367.6	-329.9	430.8	416.4	14.38	29.969	
2,400.0	2,362.4	2,321.7	2,247.7	7.6	11.2	-88.64	390.0	-349.3	456.2	440.8	15.40	29.625	
2,500.0	2,458.5	2,417.8	2,339.2	8.1	11.8	-89.88	412.3	-368.7	481.9	465.5	16.43	29.325	
2,600.0	2,554.7	2,514.0	2,430.6	8.7	12.4	-91.00	434.7	-388.0	507.7	490.3	17.47	29.064	
2,700.0	2,650.8	2,610.1	2,522.1	9.2	13.0	-92.02	457.0	-407.4	533.7	515.2	18.51	28.834	
2,800.0	2,746.9	2,706.3	2,613.6	9.8	13.6	-92.94	479.4	-426.8	559.9	540.4	19.56	28.632	
2,900.0	2,843.0	2,802.4	2,705.1	10.3	14.2	-93.78	501.7	-446.2	586.2	565.6	20.60	28.453	
3,000.0	2,939.1	2,898.5	2,796.5	10.8	14.8	-94.54	524.1	-465.6	612.6	590.9	21.65	28.295	
3,100.0	3,035.2	2,994.7	2,888.0	11.4	15.4	-95.25	546.4	-484.9	639.1	616.4	22.70	28.153	
3,200.0	3,131.3	3,090.8	2,979.5	11.9	16.1	-95.89	568.8	-504.3	665.6	641.9	23.75	28.027	
3,300.0	3,227.4	3,187.0	3,071.0	12.5	16.7	-96.49	591.1	-523.7	692.3	667.5	24.80	27.913	
3,400.0	3,323.6	3,283.1	3,162.5	13.0	17.3	-97.05	613.5	-543.1	719.0	693.1	25.85	27.810	
3,500.0	3,419.7	3,379.3	3,253.9	13.6	17.9	-97.56	635.8	-562.5	745.7	718.8	26.90	27.717	
3,600.0	3,515.8	3,475.4	3,345.4	14.1	18.5	-98.04	658.2	-581.9	772.5	744.6	27.96	27.633	
3,700.0	3,611.9	3,571.5	3,436.9	14.7	19.1	-98.49	680.6	-601.2	799.4	770.4	29.01	27.556	
3,800.0	3,708.0	3,667.7	3,528.4	15.2	19.7	-98.91	702.9	-620.6	826.3	796.2	30.06	27.486	
3,900.0	3,804.1	3,763.8	3,619.8	15.8	20.3	-99.30	725.3	-640.0	853.3	822.1	31.12	27.422	
4,000.0	3,900.2	3,860.0	3,711.3	16.3	21.0	-99.66	747.6	-659.4	880.2	848.1	32.17	27.363	
4,100.0	3,996.3	3,956.1	3,802.8	16.9	21.6	-100.01	770.0	-678.8	907.2	874.0	33.22	27.309	
4,200.0	4,092.4	4,052.3	3,894.3	17.4	22.2	-100.34	792.3	-698.1	934.3	900.0	34.27	27.259	
4,300.0	4,188.6	4,148.4	3,985.7	18.0	22.8	-100.64	814.7	-717.5	961.3	926.0	35.33	27.213	
4,400.0	4,284.7	4,244.5	4,077.2	18.5	23.4	-100.94	837.0	-736.9	988.4	952.0	36.38	27.170	
4,500.0	4,380.8	4,340.7	4,168.7	19.1	24.0	-101.21	859.4	-756.3	1,015.5	978.1	37.43	27.130	
4,600.0	4,476.9	4,436.8	4,260.2	19.6	24.6	-101.47	881.7	-775.7	1,042.7	1,004.2	38.49	27.093	
4,700.0	4,573.0	4,533.0	4,351.7	20.2	25.3	-101.72	904.1	-795.1	1,069.8	1,030.3	39.54	27.058	
4,800.0	4,669.1	4,629.1	4,443.1	20.7	25.9	-101.96	926.4	-814.4	1,097.0	1,056.4	40.59	27.026	
4,900.0	4,765.2	4,725.3	4,534.6	21.3	26.5	-102.18	948.8	-833.8	1,124.2	1,082.5	41.64	26.996	
5,000.0	4,861.3	4,821.4	4,626.1	21.8	27.1	-102.39	971.1	-853.2	1,151.4	1,108.7	42.70	26.967	
5,100.0	4,957.5	4,917.5	4,717.6	22.4	27.7	-102.60	993.5	-872.6	1,178.6	1,134.8	43.75	26.941	
5,153.6	5,009.0	4,969.1	4,766.6	22.7	28.0	-102.70	1,005.5	-883.0	1,193.2	1,148.9	44.31	26.927	
5,200.0	5,053.7	5,013.7	4,809.1	22.9	28.3	-103.03	1,015.9	-892.0	1,205.7	1,160.9	44.83	26.896	
5,300.0	5,150.7	5,110.1	4,900.8	23.3	28.9	-103.59	1,038.3	-911.4	1,232.2	1,186.4	45.84	26.882	
5,400.0	5,248.4	5,208.6	5,023.7	23.7	29.6	-103.98	1,066.6	-936.0	1,257.0	1,210.1	46.85	26.829	
5,500.0	5,346.9	5,306.8	5,157.5	24.0	30.2	-104.29	1,092.5	-958.4	1,277.8	1,230.1	47.74	26.767	
5,600.0	5,445.9	5,405.9	5,294.9	24.3	30.7	-104.53	1,113.7	-976.8	1,294.7	1,246.2	48.51	26.691	
5,700.0	5,545.3	5,505.3	5,435.1	24.5	31.1	-104.71	1,130.0	-990.9	1,307.5	1,258.4	49.15	26.603	
5,800.0	5,645.0	5,605.1	5,577.4	24.7	31.4	-104.83	1,141.1	-1,000.5	1,316.2	1,266.5	49.67	26.500	
5,900.0	5,745.0	5,705.1	5,721.0	24.8	31.6	-104.89	1,146.8	-1,005.5	1,320.6	1,270.6	50.04	26.390	
5,955.0	5,800.0	5,760.1	5,800.2	24.9	31.7	-89.37	1,147.6	-1,006.2	1,321.2	1,271.0	50.20	26.321	
6,000.0	5,845.0	5,805.1	5,845.1	24.9	31.7	-89.37	1,147.6	-1,006.2	1,321.2	1,271.0	50.29	26.274	
6,100.0	5,945.0	5,905.1	5,945.1	25.0	31.8	-89.37	1,147.6	-1,006.2	1,321.2	1,270.7	50.50	26.164	
6,200.0	6,045.0	6,005.1	6,045.1	25.1	31.9	-89.37	1,147.6	-1,006.2	1,321.2	1,270.5	50.71	26.053	
6,300.0	6,145.0	6,105.1	6,145.1	25.3	32.0	-89.37	1,147.6	-1,006.2	1,321.2	1,270.3	50.93	25.942	
6,400.0	6,245.0	6,205.1	6,245.1	25.4	32.1	-89.37	1,147.6	-1,006.2	1,321.2	1,270.1	51.15	25.830	
6,500.0	6,345.0	6,305.1	6,345.1	25.5	32.2	-89.37	1,147.6	-1,006.2	1,321.2	1,269.9	51.37	25.718	
6,600.0	6,445.0	6,405.1	6,445.1	25.6	32.2	-89.37	1,147.6	-1,006.2	1,321.2	1,269.6	51.60	25.605	
6,700.0	6,545.0	6,505.1	6,545.1	25.7	32.3	-89.37	1,147.6	-1,006.2	1,321.2	1,269.4	51.83	25.491	
6,800.0	6,645.0	6,605.1	6,645.1	25.8	32.4	-89.37	1,147.6	-1,006.2	1,321.2	1,269.2	52.06	25.378	
6,836.6	6,681.6	6,641.6	6,681.6	25.9	32.5	-89.37	1,147.6	-1,006.2	1,321.2	1,269.1	52.15	25.336	
6,855.0	6,700.0	6,660.0	6,700.0	25.9	32.5	-89.37	1,147.6	-1,006.2	1,321.2	1,269.0	52.19	25.315	

Company:	BONANZA CREEK ENERGY OPERATING	Local Co-ordinate Reference:	Well North Platte 44-33
Project:	SEC.4-T4N-R63W	TVD Reference:	WELL @ 4548.3ft (Original Well Elev)
Reference Site:	Latham 41-4 Pad Sec.4-T4N-R63W	MD Reference:	WELL @ 4548.3ft (Original Well Elev)
Site Error:	0.0ft	North Reference:	True
Reference Well:	North Platte 44-33	Survey Calculation Method:	Minimum Curvature
Well Error:	0.0ft	Output errors are at	2.00 sigma
Reference Wellbore	Wellbore #1	Database:	Landmark
Reference Design:	Plan #1 (1-28-11)	Offset TVD Reference:	Offset Datum

Reference Depths are relative to WELL @ 4548.3ft (Original Well Elev) Coordinates are relative to: North Platte 44-33
 Offset Depths are relative to Offset Datum Coordinate System is US State Plane 1983, Colorado Northern Zone
 Central Meridian is 105° 30' 0.000 W ° Grid Convergence at Surface is: 0.69°



Company:	BONANZA CREEK ENERGY OPERATING	Local Co-ordinate Reference:	Well North Platte 44-33
Project:	SEC.4-T4N-R63W	TVD Reference:	WELL @ 4548.3ft (Original Well Elev)
Reference Site:	Latham 41-4 Pad Sec.4-T4N-R63W	MD Reference:	WELL @ 4548.3ft (Original Well Elev)
Site Error:	0.0ft	North Reference:	True
Reference Well:	North Platte 44-33	Survey Calculation Method:	Minimum Curvature
Well Error:	0.0ft	Output errors are at	2.00 sigma
Reference Wellbore	Wellbore #1	Database:	Landmark
Reference Design:	Plan #1 (1-28-11)	Offset TVD Reference:	Offset Datum

Reference Depths are relative to WELL @ 4548.3ft (Original Well Elev) Coordinates are relative to: North Platte 44-33
Offset Depths are relative to Offset Datum Coordinate System is US State Plane 1983, Colorado Northern Zone
Central Meridian is 105° 30' 0.000 W ° Grid Convergence at Surface is: 0.69°

