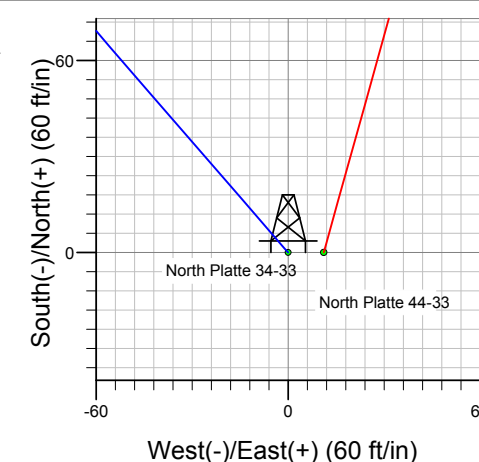
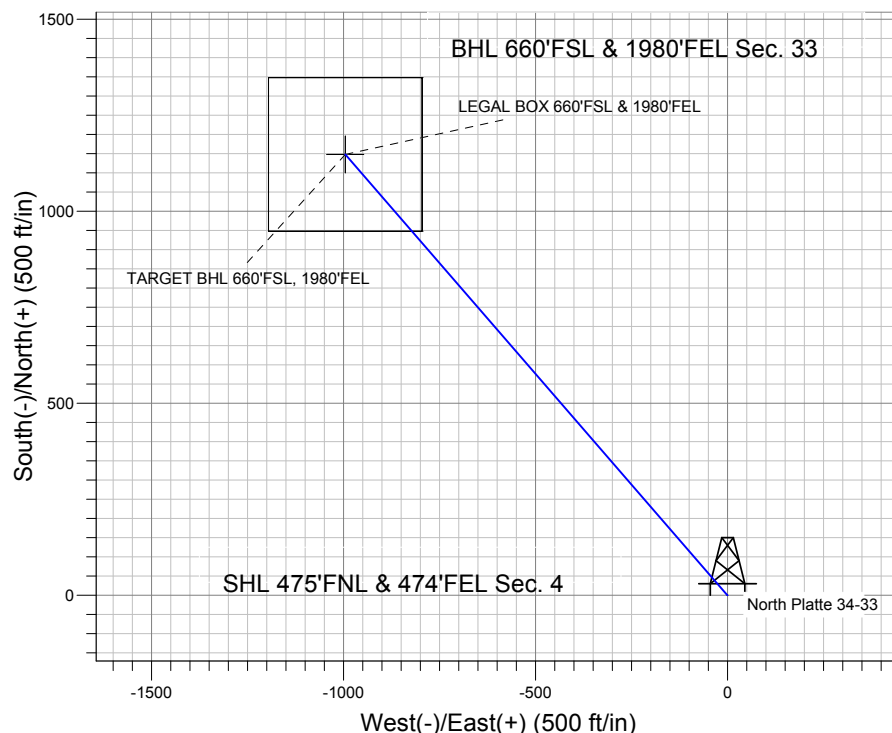
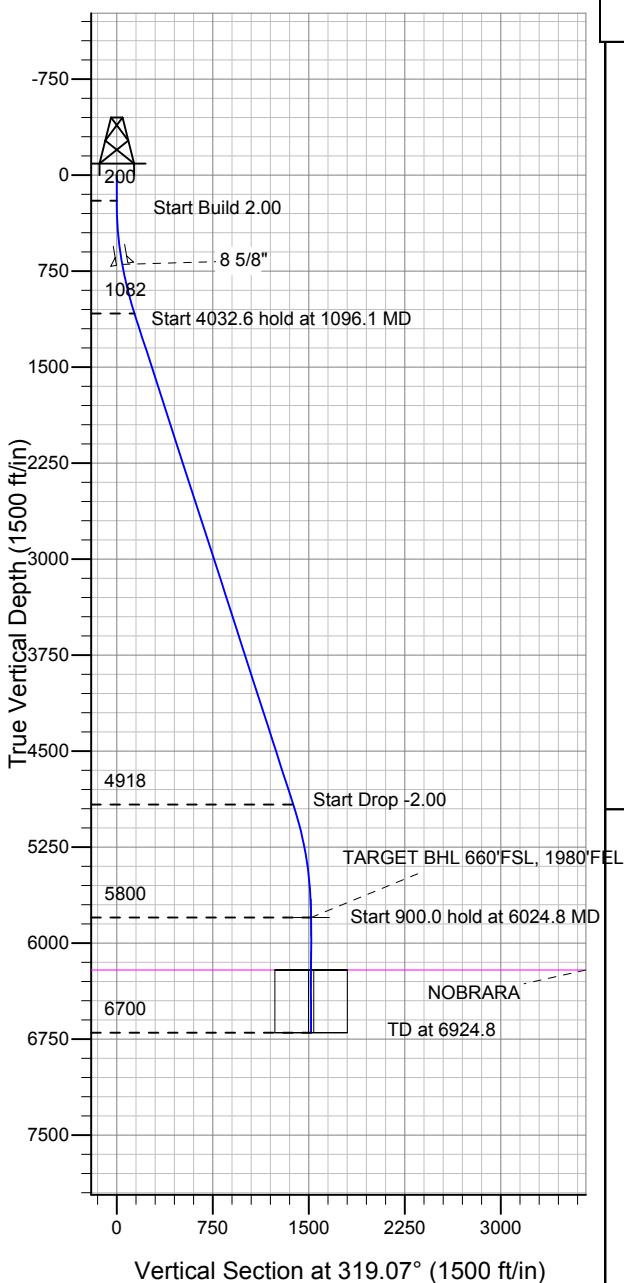


### Well Name: North Platte 34-33

Surface Location: Latham 41-4 Pad Sec.4-T4N-R63W  
 North American Datum 1983 US State Plane 1983 Colorado Northern Zone  
 Ground Elevation: 4535.5  
 +N/-S +E/-W Northing Easting Latitude Longitude Slot  
 0.0 0.0 1371184.83 3296850.42 40° 20' 50.676 N 104° 26' 5.820 W  
 Original Well Elev WELL @ 4548.5ft (Original Well Elev)

## BONANZA CREEK ENERGY OPERATING



Latham 41-4 Pad Sec.4-T4N-R63W  
 North Platte 34-33  
 Plan #1 (1-28-11)  
 15:22, January 28 2011



Azimuths to True North  
 Magnetic North: 8.73°

Magnetic Field  
 Strength: 53181.7snT  
 Dip Angle: 67.08°  
 Date: 1/28/2011  
 Model: IGRF2010

### WELLBORE TARGET DETAILS (LAT/LONG)

Name	TVD	+N/-S	+E/-W	Latitude	Longitude	Shape
TARGET BHL 660'FSL, 1980'FEL	5800.0	1147.6	-995.1	40° 21' 2.016 N	104° 26' 18.672 W	Point
LEGAL BOX 660'FSL & 1980'FEL	6210.0	1147.6	-995.1	40° 21' 2.016 N	104° 26' 18.673 W	Rectangle (Sides: L400.0 W400.0)

### SECTION DETAILS

Sec	MD	Inc	Azi	TVD	+N/-S	+E/-W	DLeg	TFace	VSec	Target
1	0.0	0.00	0.00	0.0	0.0	0.0	0.00	0.00	0.0	
2	200.0	0.00	0.00	200.0	0.0	0.0	0.00	0.00	0.0	
3	1096.1	17.92	319.07	1081.6	105.0	-91.1	2.00	319.07	139.0	
4	5128.7	17.92	319.07	4918.4	1042.6	-904.0	0.00	0.00	1379.9	
5	6024.8	0.00	0.00	5800.0	1147.6	-995.1	2.00	180.00	1518.9	TARGET BHL 660'FSL, 1980'FEL
6	6924.8	0.00	0.00	6700.0	1147.6	-995.1	0.00	0.00	1518.9	



## **Directional**

# **BONANZA CREEK ENERGY OPERATING**

**SEC.4-T4N-R63W**

**Latham 41-4 Pad Sec.4-T4N-R63W**

**North Platte 34-33**

**Wellbore #1**

**Plan: Plan #1 (1-28-11)**

## **Standard Planning Report**

**28 January, 2011**

Plan Sections										
Measured Depth (ft)	Inclination (°)	Azimuth (°)	Vertical Depth (ft)	+N/-S (ft)	+E/-W (ft)	Dogleg Rate (°/100ft)	Build Rate (°/100ft)	Turn Rate (°/100ft)	TFO (°)	Target
0.0	0.00	0.00	0.0	0.0	0.0	0.00	0.00	0.00	0.00	
200.0	0.00	0.00	200.0	0.0	0.0	0.00	0.00	0.00	0.00	
1,096.1	17.92	319.07	1,081.6	105.0	-91.1	2.00	2.00	0.00	319.07	
5,128.7	17.92	319.07	4,918.4	1,042.6	-904.0	0.00	0.00	0.00	0.00	
6,024.8	0.00	0.00	5,800.0	1,147.6	-995.1	2.00	-2.00	0.00	180.00	TARGET BHL 660°
6,924.8	0.00	0.00	6,700.0	1,147.6	-995.1	0.00	0.00	0.00	0.00	

<b>Database:</b>	Landmark	<b>Local Co-ordinate Reference:</b>	Well North Platte 34-33
<b>Company:</b>	BONANZA CREEK ENERGY OPERATING	<b>TVD Reference:</b>	WELL @ 4548.5ft (Original Well Elev)
<b>Project:</b>	SEC.4-T4N-R63W	<b>MD Reference:</b>	WELL @ 4548.5ft (Original Well Elev)
<b>Site:</b>	Latham 41-4 Pad Sec.4-T4N-R63W	<b>North Reference:</b>	True
<b>Well:</b>	North Platte 34-33	<b>Survey Calculation Method:</b>	Minimum Curvature
<b>Wellbore:</b>	Wellbore #1		
<b>Design:</b>	Plan #1 (1-28-11)		

Planned Survey									
Measured Depth (ft)	Inclination (°)	Azimuth (°)	Vertical Depth (ft)	+N/-S (ft)	+E/-W (ft)	Vertical Section (ft)	Dogleg Rate (°/100ft)	Build Rate (°/100ft)	Turn Rate (°/100ft)
0.0	0.00	0.00	0.0	0.0	0.0	0.0	0.00	0.00	0.00
40.0	0.00	0.00	40.0	0.0	0.0	0.0	0.00	0.00	0.00
80.0	0.00	0.00	80.0	0.0	0.0	0.0	0.00	0.00	0.00
120.0	0.00	0.00	120.0	0.0	0.0	0.0	0.00	0.00	0.00
160.0	0.00	0.00	160.0	0.0	0.0	0.0	0.00	0.00	0.00
200.0	0.00	0.00	200.0	0.0	0.0	0.0	0.00	0.00	0.00
240.0	0.80	319.07	240.0	0.2	-0.2	0.3	2.00	2.00	0.00
280.0	1.60	319.07	280.0	0.8	-0.7	1.1	2.00	2.00	0.00
320.0	2.40	319.07	320.0	1.9	-1.6	2.5	2.00	2.00	0.00
360.0	3.20	319.07	359.9	3.4	-2.9	4.5	2.00	2.00	0.00
400.0	4.00	319.07	399.8	5.3	-4.6	7.0	2.00	2.00	0.00
440.0	4.80	319.07	439.7	7.6	-6.6	10.0	2.00	2.00	0.00
480.0	5.60	319.07	479.6	10.3	-9.0	13.7	2.00	2.00	0.00
520.0	6.40	319.07	519.3	13.5	-11.7	17.9	2.00	2.00	0.00
560.0	7.20	319.07	559.1	17.1	-14.8	22.6	2.00	2.00	0.00
600.0	8.00	319.07	598.7	21.1	-18.3	27.9	2.00	2.00	0.00
640.0	8.80	319.07	638.3	25.5	-22.1	33.7	2.00	2.00	0.00
680.0	9.60	319.07	677.8	30.3	-26.3	40.1	2.00	2.00	0.00
699.5	9.99	319.07	697.0	32.8	-28.5	43.4	2.00	2.00	0.00
8 5/8"									
720.0	10.40	319.07	717.1	35.6	-30.8	47.1	2.00	2.00	0.00
760.0	11.20	319.07	756.4	41.2	-35.7	54.6	2.00	2.00	0.00
800.0	12.00	319.07	795.6	47.3	-41.0	62.6	2.00	2.00	0.00
840.0	12.80	319.07	834.7	53.8	-46.6	71.2	2.00	2.00	0.00
880.0	13.60	319.07	873.6	60.7	-52.6	80.3	2.00	2.00	0.00
920.0	14.40	319.07	912.4	68.0	-59.0	90.0	2.00	2.00	0.00
960.0	15.20	319.07	951.1	75.7	-65.7	100.2	2.00	2.00	0.00
1,000.0	16.00	319.07	989.6	83.8	-72.7	111.0	2.00	2.00	0.00
1,040.0	16.80	319.07	1,028.0	92.4	-80.1	122.3	2.00	2.00	0.00
1,080.0	17.60	319.07	1,066.2	101.3	-87.8	134.1	2.00	2.00	0.00
1,096.1	17.92	319.07	1,081.6	105.0	-91.1	139.0	2.00	2.00	0.00
1,120.0	17.92	319.07	1,104.3	110.6	-95.9	146.4	0.00	0.00	0.00
1,160.0	17.92	319.07	1,142.4	119.9	-103.9	158.7	0.00	0.00	0.00
1,200.0	17.92	319.07	1,180.4	129.2	-112.0	171.0	0.00	0.00	0.00
1,240.0	17.92	319.07	1,218.5	138.5	-120.1	183.3	0.00	0.00	0.00
1,280.0	17.92	319.07	1,256.5	147.8	-128.1	195.6	0.00	0.00	0.00
1,320.0	17.92	319.07	1,294.6	157.1	-136.2	207.9	0.00	0.00	0.00
1,360.0	17.92	319.07	1,332.7	166.4	-144.3	220.2	0.00	0.00	0.00
1,400.0	17.92	319.07	1,370.7	175.7	-152.3	232.5	0.00	0.00	0.00
1,440.0	17.92	319.07	1,408.8	185.0	-160.4	244.8	0.00	0.00	0.00
1,480.0	17.92	319.07	1,446.8	194.3	-168.5	257.1	0.00	0.00	0.00
1,520.0	17.92	319.07	1,484.9	203.6	-176.5	269.5	0.00	0.00	0.00
1,560.0	17.92	319.07	1,522.9	212.9	-184.6	281.8	0.00	0.00	0.00
1,600.0	17.92	319.07	1,561.0	222.2	-192.6	294.1	0.00	0.00	0.00
1,640.0	17.92	319.07	1,599.1	231.5	-200.7	306.4	0.00	0.00	0.00
1,680.0	17.92	319.07	1,637.1	240.8	-208.8	318.7	0.00	0.00	0.00
1,720.0	17.92	319.07	1,675.2	250.1	-216.8	331.0	0.00	0.00	0.00
1,760.0	17.92	319.07	1,713.2	259.4	-224.9	343.3	0.00	0.00	0.00
1,800.0	17.92	319.07	1,751.3	268.7	-233.0	355.6	0.00	0.00	0.00
1,840.0	17.92	319.07	1,789.4	278.0	-241.0	367.9	0.00	0.00	0.00
1,880.0	17.92	319.07	1,827.4	287.3	-249.1	380.2	0.00	0.00	0.00
1,920.0	17.92	319.07	1,865.5	296.6	-257.2	392.5	0.00	0.00	0.00
1,960.0	17.92	319.07	1,903.5	305.9	-265.2	404.8	0.00	0.00	0.00
2,000.0	17.92	319.07	1,941.6	315.2	-273.3	417.2	0.00	0.00	0.00

<b>Database:</b>	Landmark	<b>Local Co-ordinate Reference:</b>	Well North Platte 34-33
<b>Company:</b>	BONANZA CREEK ENERGY OPERATING	<b>TVD Reference:</b>	WELL @ 4548.5ft (Original Well Elev)
<b>Project:</b>	SEC.4-T4N-R63W	<b>MD Reference:</b>	WELL @ 4548.5ft (Original Well Elev)
<b>Site:</b>	Latham 41-4 Pad Sec.4-T4N-R63W	<b>North Reference:</b>	True
<b>Well:</b>	North Platte 34-33	<b>Survey Calculation Method:</b>	Minimum Curvature
<b>Wellbore:</b>	Wellbore #1		
<b>Design:</b>	Plan #1 (1-28-11)		

Planned Survey									
Measured Depth (ft)	Inclination (°)	Azimuth (°)	Vertical Depth (ft)	+N/-S (ft)	+E/-W (ft)	Vertical Section (ft)	Dogleg Rate (°/100ft)	Build Rate (°/100ft)	Turn Rate (°/100ft)
2,040.0	17.92	319.07	1,979.7	324.5	-281.3	429.5	0.00	0.00	0.00
2,080.0	17.92	319.07	2,017.7	333.8	-289.4	441.8	0.00	0.00	0.00
2,120.0	17.92	319.07	2,055.8	343.1	-297.5	454.1	0.00	0.00	0.00
2,160.0	17.92	319.07	2,093.8	352.4	-305.5	466.4	0.00	0.00	0.00
2,200.0	17.92	319.07	2,131.9	361.7	-313.6	478.7	0.00	0.00	0.00
2,240.0	17.92	319.07	2,170.0	371.0	-321.7	491.0	0.00	0.00	0.00
2,280.0	17.92	319.07	2,208.0	380.3	-329.7	503.3	0.00	0.00	0.00
2,320.0	17.92	319.07	2,246.1	389.6	-337.8	515.6	0.00	0.00	0.00
2,360.0	17.92	319.07	2,284.1	398.9	-345.9	527.9	0.00	0.00	0.00
2,400.0	17.92	319.07	2,322.2	408.2	-353.9	540.2	0.00	0.00	0.00
2,440.0	17.92	319.07	2,360.2	417.5	-362.0	552.6	0.00	0.00	0.00
2,480.0	17.92	319.07	2,398.3	426.8	-370.0	564.9	0.00	0.00	0.00
2,520.0	17.92	319.07	2,436.4	436.1	-378.1	577.2	0.00	0.00	0.00
2,560.0	17.92	319.07	2,474.4	445.4	-386.2	589.5	0.00	0.00	0.00
2,600.0	17.92	319.07	2,512.5	454.7	-394.2	601.8	0.00	0.00	0.00
2,640.0	17.92	319.07	2,550.5	464.0	-402.3	614.1	0.00	0.00	0.00
2,680.0	17.92	319.07	2,588.6	473.3	-410.4	626.4	0.00	0.00	0.00
2,720.0	17.92	319.07	2,626.7	482.6	-418.4	638.7	0.00	0.00	0.00
2,760.0	17.92	319.07	2,664.7	491.9	-426.5	651.0	0.00	0.00	0.00
2,800.0	17.92	319.07	2,702.8	501.2	-434.6	663.3	0.00	0.00	0.00
2,840.0	17.92	319.07	2,740.8	510.5	-442.6	675.6	0.00	0.00	0.00
2,880.0	17.92	319.07	2,778.9	519.8	-450.7	688.0	0.00	0.00	0.00
2,920.0	17.92	319.07	2,817.0	529.1	-458.7	700.3	0.00	0.00	0.00
2,960.0	17.92	319.07	2,855.0	538.4	-466.8	712.6	0.00	0.00	0.00
3,000.0	17.92	319.07	2,893.1	547.7	-474.9	724.9	0.00	0.00	0.00
3,040.0	17.92	319.07	2,931.1	557.0	-482.9	737.2	0.00	0.00	0.00
3,080.0	17.92	319.07	2,969.2	566.3	-491.0	749.5	0.00	0.00	0.00
3,120.0	17.92	319.07	3,007.3	575.6	-499.1	761.8	0.00	0.00	0.00
3,160.0	17.92	319.07	3,045.3	584.9	-507.1	774.1	0.00	0.00	0.00
3,200.0	17.92	319.07	3,083.4	594.2	-515.2	786.4	0.00	0.00	0.00
3,240.0	17.92	319.07	3,121.4	603.5	-523.3	798.7	0.00	0.00	0.00
3,280.0	17.92	319.07	3,159.5	612.8	-531.3	811.0	0.00	0.00	0.00
3,320.0	17.92	319.07	3,197.5	622.1	-539.4	823.3	0.00	0.00	0.00
3,360.0	17.92	319.07	3,235.6	631.4	-547.4	835.7	0.00	0.00	0.00
3,400.0	17.92	319.07	3,273.7	640.7	-555.5	848.0	0.00	0.00	0.00
3,440.0	17.92	319.07	3,311.7	650.0	-563.6	860.3	0.00	0.00	0.00
3,480.0	17.92	319.07	3,349.8	659.3	-571.6	872.6	0.00	0.00	0.00
3,520.0	17.92	319.07	3,387.8	668.6	-579.7	884.9	0.00	0.00	0.00
3,560.0	17.92	319.07	3,425.9	677.9	-587.8	897.2	0.00	0.00	0.00
3,600.0	17.92	319.07	3,464.0	687.2	-595.8	909.5	0.00	0.00	0.00
3,640.0	17.92	319.07	3,502.0	696.5	-603.9	921.8	0.00	0.00	0.00
3,680.0	17.92	319.07	3,540.1	705.8	-612.0	934.1	0.00	0.00	0.00
3,720.0	17.92	319.07	3,578.1	715.1	-620.0	946.4	0.00	0.00	0.00
3,760.0	17.92	319.07	3,616.2	724.4	-628.1	958.7	0.00	0.00	0.00
3,800.0	17.92	319.07	3,654.3	733.7	-636.1	971.1	0.00	0.00	0.00
3,840.0	17.92	319.07	3,692.3	743.0	-644.2	983.4	0.00	0.00	0.00
3,880.0	17.92	319.07	3,730.4	752.3	-652.3	995.7	0.00	0.00	0.00
3,920.0	17.92	319.07	3,768.4	761.6	-660.3	1,008.0	0.00	0.00	0.00
3,960.0	17.92	319.07	3,806.5	770.9	-668.4	1,020.3	0.00	0.00	0.00
4,000.0	17.92	319.07	3,844.6	780.2	-676.5	1,032.6	0.00	0.00	0.00
4,040.0	17.92	319.07	3,882.6	789.5	-684.5	1,044.9	0.00	0.00	0.00
4,080.0	17.92	319.07	3,920.7	798.8	-692.6	1,057.2	0.00	0.00	0.00
4,120.0	17.92	319.07	3,958.7	808.1	-700.7	1,069.5	0.00	0.00	0.00
4,160.0	17.92	319.07	3,996.8	817.4	-708.7	1,081.8	0.00	0.00	0.00

<b>Database:</b>	Landmark	<b>Local Co-ordinate Reference:</b>	Well North Platte 34-33
<b>Company:</b>	BONANZA CREEK ENERGY OPERATING	<b>TVD Reference:</b>	WELL @ 4548.5ft (Original Well Elev)
<b>Project:</b>	SEC.4-T4N-R63W	<b>MD Reference:</b>	WELL @ 4548.5ft (Original Well Elev)
<b>Site:</b>	Latham 41-4 Pad Sec.4-T4N-R63W	<b>North Reference:</b>	True
<b>Well:</b>	North Platte 34-33	<b>Survey Calculation Method:</b>	Minimum Curvature
<b>Wellbore:</b>	Wellbore #1		
<b>Design:</b>	Plan #1 (1-28-11)		

Planned Survey									
Measured Depth (ft)	Inclination (°)	Azimuth (°)	Vertical Depth (ft)	+N/-S (ft)	+E/-W (ft)	Vertical Section (ft)	Dogleg Rate (°/100ft)	Build Rate (°/100ft)	Turn Rate (°/100ft)
4,200.0	17.92	319.07	4,034.8	826.7	-716.8	1,094.1	0.00	0.00	0.00
4,240.0	17.92	319.07	4,072.9	836.0	-724.8	1,106.5	0.00	0.00	0.00
4,280.0	17.92	319.07	4,111.0	845.3	-732.9	1,118.8	0.00	0.00	0.00
4,320.0	17.92	319.07	4,149.0	854.6	-741.0	1,131.1	0.00	0.00	0.00
4,360.0	17.92	319.07	4,187.1	863.9	-749.0	1,143.4	0.00	0.00	0.00
4,400.0	17.92	319.07	4,225.1	873.2	-757.1	1,155.7	0.00	0.00	0.00
4,440.0	17.92	319.07	4,263.2	882.5	-765.2	1,168.0	0.00	0.00	0.00
4,480.0	17.92	319.07	4,301.3	891.8	-773.2	1,180.3	0.00	0.00	0.00
4,520.0	17.92	319.07	4,339.3	901.1	-781.3	1,192.6	0.00	0.00	0.00
4,560.0	17.92	319.07	4,377.4	910.4	-789.4	1,204.9	0.00	0.00	0.00
4,600.0	17.92	319.07	4,415.4	919.7	-797.4	1,217.2	0.00	0.00	0.00
4,640.0	17.92	319.07	4,453.5	929.0	-805.5	1,229.5	0.00	0.00	0.00
4,680.0	17.92	319.07	4,491.6	938.3	-813.5	1,241.8	0.00	0.00	0.00
4,720.0	17.92	319.07	4,529.6	947.6	-821.6	1,254.2	0.00	0.00	0.00
4,760.0	17.92	319.07	4,567.7	956.9	-829.7	1,266.5	0.00	0.00	0.00
4,800.0	17.92	319.07	4,605.7	966.2	-837.7	1,278.8	0.00	0.00	0.00
4,840.0	17.92	319.07	4,643.8	975.5	-845.8	1,291.1	0.00	0.00	0.00
4,880.0	17.92	319.07	4,681.9	984.8	-853.9	1,303.4	0.00	0.00	0.00
4,920.0	17.92	319.07	4,719.9	994.1	-861.9	1,315.7	0.00	0.00	0.00
4,960.0	17.92	319.07	4,758.0	1,003.4	-870.0	1,328.0	0.00	0.00	0.00
5,000.0	17.92	319.07	4,796.0	1,012.7	-878.0	1,340.3	0.00	0.00	0.00
5,040.0	17.92	319.07	4,834.1	1,022.0	-886.1	1,352.6	0.00	0.00	0.00
5,080.0	17.92	319.07	4,872.1	1,031.3	-894.2	1,364.9	0.00	0.00	0.00
5,120.0	17.92	319.07	4,910.2	1,040.6	-902.2	1,377.2	0.00	0.00	0.00
5,128.7	17.92	319.07	4,918.4	1,042.6	-904.0	1,379.9	0.00	0.00	0.00
5,160.0	17.30	319.07	4,948.3	1,049.7	-910.2	1,389.4	2.00	-2.00	0.00
5,200.0	16.50	319.07	4,986.6	1,058.5	-917.8	1,401.0	2.00	-2.00	0.00
5,240.0	15.70	319.07	5,025.0	1,066.9	-925.1	1,412.1	2.00	-2.00	0.00
5,280.0	14.90	319.07	5,063.6	1,074.9	-932.0	1,422.7	2.00	-2.00	0.00
5,320.0	14.10	319.07	5,102.3	1,082.4	-938.5	1,432.7	2.00	-2.00	0.00
5,360.0	13.30	319.07	5,141.2	1,089.6	-944.8	1,442.1	2.00	-2.00	0.00
5,400.0	12.50	319.07	5,180.2	1,096.3	-950.6	1,451.1	2.00	-2.00	0.00
5,440.0	11.70	319.07	5,219.3	1,102.7	-956.1	1,459.4	2.00	-2.00	0.00
5,480.0	10.90	319.07	5,258.5	1,108.6	-961.2	1,467.3	2.00	-2.00	0.00
5,520.0	10.10	319.07	5,297.9	1,114.1	-966.0	1,474.6	2.00	-2.00	0.00
5,560.0	9.30	319.07	5,337.3	1,119.2	-970.4	1,481.3	2.00	-2.00	0.00
5,600.0	8.50	319.07	5,376.8	1,123.9	-974.5	1,487.5	2.00	-2.00	0.00
5,640.0	7.70	319.07	5,416.4	1,128.1	-978.1	1,493.1	2.00	-2.00	0.00
5,680.0	6.90	319.07	5,456.1	1,131.9	-981.5	1,498.2	2.00	-2.00	0.00
5,720.0	6.10	319.07	5,495.8	1,135.4	-984.4	1,502.7	2.00	-2.00	0.00
5,760.0	5.30	319.07	5,535.6	1,138.4	-987.0	1,506.7	2.00	-2.00	0.00
5,800.0	4.50	319.07	5,575.5	1,140.9	-989.3	1,510.1	2.00	-2.00	0.00
5,840.0	3.70	319.07	5,615.4	1,143.1	-991.1	1,513.0	2.00	-2.00	0.00
5,880.0	2.90	319.07	5,655.3	1,144.8	-992.7	1,515.3	2.00	-2.00	0.00
5,920.0	2.10	319.07	5,695.3	1,146.2	-993.8	1,517.0	2.00	-2.00	0.00
5,960.0	1.30	319.07	5,735.3	1,147.0	-994.6	1,518.2	2.00	-2.00	0.00
6,000.0	0.50	319.07	5,775.2	1,147.5	-995.0	1,518.8	2.00	-2.00	0.00
6,024.8	0.00	0.00	5,800.0	1,147.6	-995.1	1,518.9	2.00	-2.00	165.33
TARGET BHL 660'FSL, 1980'FEL									
6,040.0	0.00	0.00	5,815.2	1,147.6	-995.1	1,518.9	0.00	0.00	0.00
6,080.0	0.00	0.00	5,855.2	1,147.6	-995.1	1,518.9	0.00	0.00	0.00
6,120.0	0.00	0.00	5,895.2	1,147.6	-995.1	1,518.9	0.00	0.00	0.00
6,160.0	0.00	0.00	5,935.2	1,147.6	-995.1	1,518.9	0.00	0.00	0.00
6,200.0	0.00	0.00	5,975.2	1,147.6	-995.1	1,518.9	0.00	0.00	0.00

<b>Database:</b>	Landmark	<b>Local Co-ordinate Reference:</b>	Well North Platte 34-33
<b>Company:</b>	BONANZA CREEK ENERGY OPERATING	<b>TVD Reference:</b>	WELL @ 4548.5ft (Original Well Elev)
<b>Project:</b>	SEC.4-T4N-R63W	<b>MD Reference:</b>	WELL @ 4548.5ft (Original Well Elev)
<b>Site:</b>	Latham 41-4 Pad Sec.4-T4N-R63W	<b>North Reference:</b>	True
<b>Well:</b>	North Platte 34-33	<b>Survey Calculation Method:</b>	Minimum Curvature
<b>Wellbore:</b>	Wellbore #1		
<b>Design:</b>	Plan #1 (1-28-11)		

Planned Survey									
Measured Depth (ft)	Inclination (°)	Azimuth (°)	Vertical Depth (ft)	+N/-S (ft)	+E/-W (ft)	Vertical Section (ft)	Dogleg Rate (°/100ft)	Build Rate (°/100ft)	Turn Rate (°/100ft)
6,240.0	0.00	0.00	6,015.2	1,147.6	-995.1	1,518.9	0.00	0.00	0.00
6,280.0	0.00	0.00	6,055.2	1,147.6	-995.1	1,518.9	0.00	0.00	0.00
6,320.0	0.00	0.00	6,095.2	1,147.6	-995.1	1,518.9	0.00	0.00	0.00
6,360.0	0.00	0.00	6,135.2	1,147.6	-995.1	1,518.9	0.00	0.00	0.00
6,400.0	0.00	0.00	6,175.2	1,147.6	-995.1	1,518.9	0.00	0.00	0.00
6,434.8	0.00	0.00	6,210.0	1,147.6	-995.1	1,518.9	0.00	0.00	0.00
<b>NOBRARA - LEGAL BOX 660'FSL &amp; 1980'FEL</b>									
6,440.0	0.00	0.00	6,215.2	1,147.6	-995.1	1,518.9	0.00	0.00	0.00
6,480.0	0.00	0.00	6,255.2	1,147.6	-995.1	1,518.9	0.00	0.00	0.00
6,520.0	0.00	0.00	6,295.2	1,147.6	-995.1	1,518.9	0.00	0.00	0.00
6,560.0	0.00	0.00	6,335.2	1,147.6	-995.1	1,518.9	0.00	0.00	0.00
6,600.0	0.00	0.00	6,375.2	1,147.6	-995.1	1,518.9	0.00	0.00	0.00
6,640.0	0.00	0.00	6,415.2	1,147.6	-995.1	1,518.9	0.00	0.00	0.00
6,680.0	0.00	0.00	6,455.2	1,147.6	-995.1	1,518.9	0.00	0.00	0.00
6,720.0	0.00	0.00	6,495.2	1,147.6	-995.1	1,518.9	0.00	0.00	0.00
6,760.0	0.00	0.00	6,535.2	1,147.6	-995.1	1,518.9	0.00	0.00	0.00
6,800.0	0.00	0.00	6,575.2	1,147.6	-995.1	1,518.9	0.00	0.00	0.00
6,840.0	0.00	0.00	6,615.2	1,147.6	-995.1	1,518.9	0.00	0.00	0.00
6,880.0	0.00	0.00	6,655.2	1,147.6	-995.1	1,518.9	0.00	0.00	0.00
6,920.0	0.00	0.00	6,695.2	1,147.6	-995.1	1,518.9	0.00	0.00	0.00
6,924.8	0.00	0.00	6,700.0	1,147.6	-995.1	1,518.9	0.00	0.00	0.00

Targets									
Target Name	Dip Angle (°)	Dip Dir. (°)	TVD (ft)	+N/-S (ft)	+E/-W (ft)	Northing (ft)	Easting (ft)	Latitude	Longitude
- hit/miss target									
- Shape									
TARGET BHL 660'FS	0.00	0.00	5,800.0	1,147.6	-995.1	1,372,320.35	3,295,841.70	40° 21' 2.016 N	104° 26' 18.672 W
- plan hits target center									
- Point									
LEGAL BOX 660'FSL	0.00	0.00	6,210.0	1,147.6	-995.1	1,372,320.35	3,295,841.66	40° 21' 2.016 N	104° 26' 18.673 W
- plan hits target center									
- Rectangle (sides W400.0 H400.0 D490.0)									

Casing Points				
Measured Depth (ft)	Vertical Depth (ft)	Name	Casing Diameter (")	Hole Diameter (")
699.5	697.0	8 5/8"	8-5/8	12-1/4



## **Directional**

# **BONANZA CREEK ENERGY OPERATING**

**SEC.4-T4N-R63W**

**Latham 41-4 Pad Sec.4-T4N-R63W**

**North Platte 34-33**

**Wellbore #1**

**Plan #1 (1-28-11)**

## **Anticollision Report**

**28 January, 2011**



<b>Company:</b>	BONANZA CREEK ENERGY OPERATING	<b>Local Co-ordinate Reference:</b>	Well North Platte 34-33
<b>Project:</b>	SEC.4-T4N-R63W	<b>TVD Reference:</b>	WELL @ 4548.5ft (Original Well Elev)
<b>Reference Site:</b>	Latham 41-4 Pad Sec.4-T4N-R63W	<b>MD Reference:</b>	WELL @ 4548.5ft (Original Well Elev)
<b>Site Error:</b>	0.0ft	<b>North Reference:</b>	True
<b>Reference Well:</b>	North Platte 34-33	<b>Survey Calculation Method:</b>	Minimum Curvature
<b>Well Error:</b>	0.0ft	<b>Output errors are at</b>	2.00 sigma
<b>Reference Wellbore</b>	Wellbore #1	<b>Database:</b>	Landmark
<b>Reference Design:</b>	Plan #1 (1-28-11)	<b>Offset TVD Reference:</b>	Offset Datum

<b>Reference</b>	Plan #1 (1-28-11)		
<b>Filter type:</b>	NO GLOBAL FILTER: Using user defined selection & filtering criteria		
<b>Interpolation Method:</b>	Stations	<b>Error Model:</b>	ISCWSA
<b>Depth Range:</b>	Unlimited	<b>Scan Method:</b>	Closest Approach 3D
<b>Results Limited by:</b>	Maximum center-center distance of 10,000.0ft	<b>Error Surface:</b>	Elliptical Conic
<b>Warning Levels Evaluated at:</b>	2.00 Sigma		

<b>Survey Tool Program</b>	<b>Date</b> 1/28/2011			
<b>From (ft)</b>	<b>To (ft)</b>	<b>Survey (Wellbore)</b>	<b>Tool Name</b>	<b>Description</b>
0.0	6,924.8	Plan #1 (1-28-11) (Wellbore #1)	MWD	MWD - Standard

<b>Summary</b>						
<b>Site Name</b>	<b>Reference Measured Depth (ft)</b>	<b>Offset Measured Depth (ft)</b>	<b>Distance Between Centres (ft)</b>	<b>Distance Between Ellipses (ft)</b>	<b>Separation Factor</b>	<b>Warning</b>
<b>Offset Well - Wellbore - Design</b>						
Latham 41-4 Pad Sec.4-T4N-R63W						
North Platte 44-33 - Wellbore #1 - Plan #1 (1-28-11)	200.0	199.8	11.1	10.5	16.544	CC, ES
North Platte 44-33 - Wellbore #1 - Plan #1 (1-28-11)	400.0	399.7	16.6	15.0	10.479	SF

<b>Offset Design</b> Latham 41-4 Pad Sec.4-T4N-R63W - North Platte 44-33 - Wellbore #1 - Plan #1 (1-28-11)													<b>Offset Site Error:</b>	0.0 ft
Survey Program: 0-MWD													<b>Offset Well Error:</b>	0.0 ft
<b>Reference</b>	<b>Offset</b>	<b>Semi Major Axis</b>		<b>Distance</b>				<b>Warning</b>						
<b>Measured Depth (ft)</b>	<b>Vertical Depth (ft)</b>	<b>Measured Depth (ft)</b>	<b>Vertical Depth (ft)</b>	<b>Reference (ft)</b>	<b>Offset (ft)</b>	<b>Highside Toolface (°)</b>	<b>Offset Wellbore Centre +N/-S (ft)</b>	<b>+E/-W (ft)</b>	<b>Between Centres (ft)</b>	<b>Between Ellipses (ft)</b>	<b>Minimum Separation (ft)</b>	<b>Separation Factor</b>		
0.0	0.0	0.0	0.0	0.0	0.0	90.00	0.0	11.1	11.2	11.2	0.00	N/A		
100.0	100.0	99.8	99.8	0.1	0.1	90.00	0.0	11.1	11.1	10.9	0.22	49.640		
200.0	200.0	199.8	199.8	0.3	0.3	90.00	0.0	11.1	11.1	10.5	0.67	16.544	CC, ES	
300.0	300.0	299.8	299.8	0.6	0.6	137.03	0.0	11.1	12.4	11.2	1.12	10.993		
400.0	399.8	399.7	399.7	0.8	0.8	149.41	0.0	11.1	16.6	15.0	1.58	10.479	SF	
500.0	499.5	499.3	499.3	1.0	1.0	159.78	0.0	11.1	24.5	22.4	2.04	11.980		
600.0	598.7	598.5	598.5	1.3	1.2	166.41	0.0	11.1	36.2	33.7	2.51	14.433		
700.0	697.5	697.3	697.3	1.7	1.5	170.45	0.0	11.1	51.5	48.6	2.97	17.352		
800.0	795.6	795.5	795.5	2.0	1.7	172.98	0.0	11.1	70.4	67.0	3.43	20.513		
900.0	893.1	892.9	892.9	2.5	1.9	174.63	0.0	11.1	92.8	88.9	3.90	23.804		
1,000.0	989.6	991.3	991.3	3.0	2.1	175.14	1.4	11.5	117.9	113.5	4.36	27.010		
1,096.1	1,081.6	1,085.9	1,085.8	3.5	2.3	174.41	5.8	12.8	143.7	138.9	4.82	29.833		
1,100.0	1,085.3	1,089.8	1,089.6	3.5	2.3	174.36	6.1	12.8	144.8	139.9	4.84	29.939		
1,200.0	1,180.4	1,188.5	1,188.0	4.1	2.6	172.88	14.0	15.0	171.7	166.3	5.34	32.158		
1,300.0	1,275.6	1,287.8	1,286.6	4.7	2.8	170.88	25.2	18.2	197.2	191.4	5.88	33.567		
1,400.0	1,370.7	1,387.3	1,385.0	5.4	3.1	168.50	39.8	22.2	221.7	215.2	6.46	34.299		
1,500.0	1,465.9	1,486.9	1,482.8	6.0	3.4	165.83	57.7	27.2	245.2	238.1	7.11	34.464		
1,600.0	1,561.0	1,586.4	1,579.8	6.6	3.7	162.93	78.8	33.1	268.1	260.2	7.85	34.160		
1,700.0	1,656.2	1,685.3	1,675.5	7.2	4.1	159.84	103.1	39.8	290.6	281.9	8.68	33.492		
1,800.0	1,751.3	1,781.9	1,768.3	7.9	4.5	156.87	128.7	46.9	313.4	303.8	9.58	32.714		
1,900.0	1,846.5	1,878.0	1,860.7	8.5	5.0	154.30	154.3	54.0	336.9	326.4	10.53	32.009		
2,000.0	1,941.6	1,974.2	1,953.2	9.1	5.5	152.07	179.9	61.1	361.0	349.5	11.50	31.380		
2,100.0	2,036.7	2,070.3	2,045.6	9.8	5.9	150.11	205.4	68.3	385.5	373.0	12.50	30.836		
2,200.0	2,131.9	2,166.5	2,138.0	10.4	6.4	148.38	231.0	75.4	410.4	396.9	13.51	30.365		
2,300.0	2,227.0	2,262.6	2,230.4	11.0	6.9	146.85	256.6	82.5	435.6	421.0	14.54	29.958		

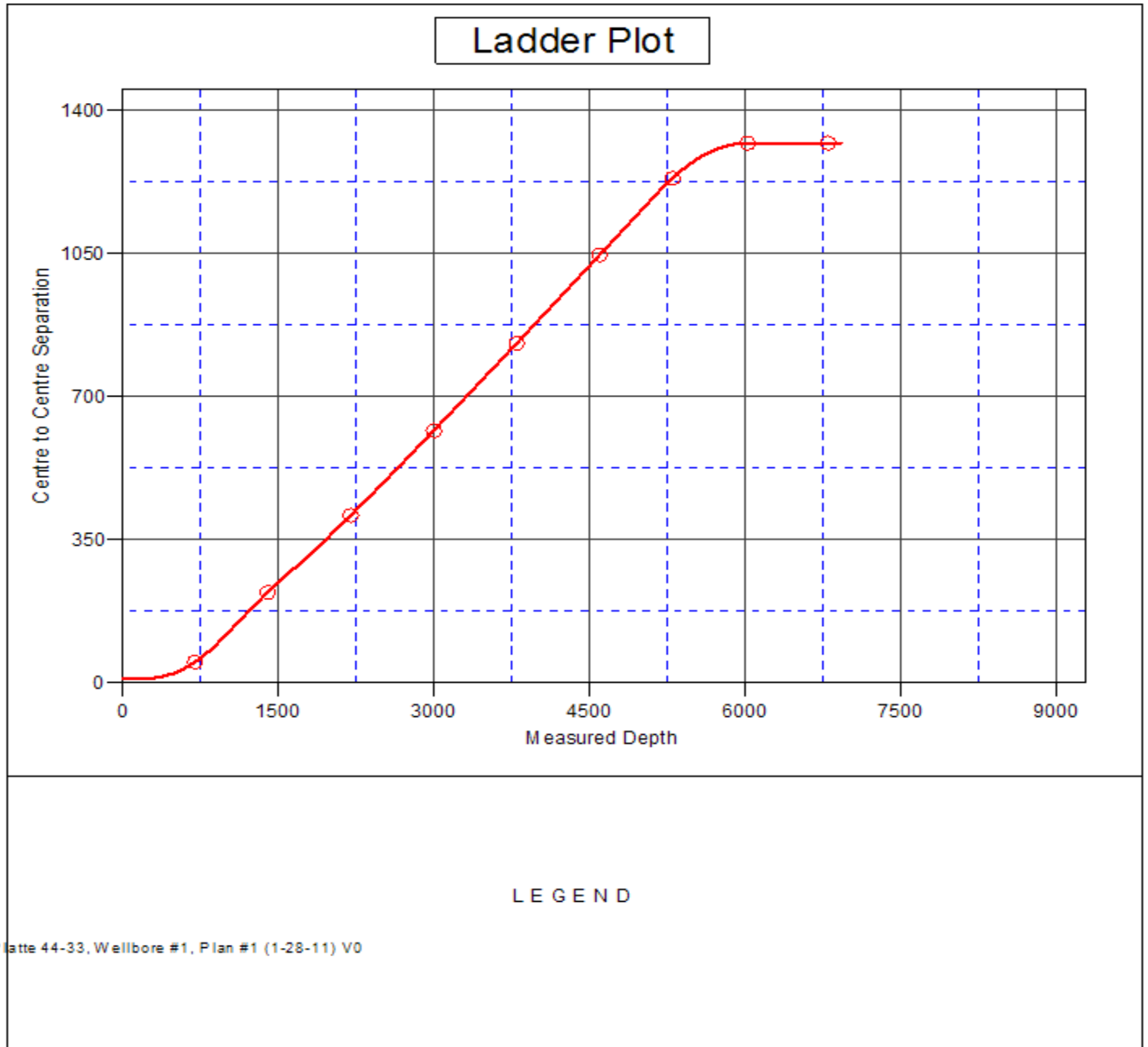
CC - Min centre to center distance or convergent point, SF - min separation factor, ES - min ellipse separation

<b>Company:</b>	BONANZA CREEK ENERGY OPERATING	<b>Local Co-ordinate Reference:</b>	Well North Platte 34-33
<b>Project:</b>	SEC.4-T4N-R63W	<b>TVD Reference:</b>	WELL @ 4548.5ft (Original Well Elev)
<b>Reference Site:</b>	Latham 41-4 Pad Sec.4-T4N-R63W	<b>MD Reference:</b>	WELL @ 4548.5ft (Original Well Elev)
<b>Site Error:</b>	0.0ft	<b>North Reference:</b>	True
<b>Reference Well:</b>	North Platte 34-33	<b>Survey Calculation Method:</b>	Minimum Curvature
<b>Well Error:</b>	0.0ft	<b>Output errors are at</b>	2.00 sigma
<b>Reference Wellbore</b>	Wellbore #1	<b>Database:</b>	Landmark
<b>Reference Design:</b>	Plan #1 (1-28-11)	<b>Offset TVD Reference:</b>	Offset Datum

Offset Design												Offset Site Error:	0.0 ft
Survey Program: 0-MWD												Offset Well Error:	0.0 ft
Reference		Offset		Semi Major Axis			Distance						Warning
Measured Depth (ft)	Vertical Depth (ft)	Measured Depth (ft)	Vertical Depth (ft)	Reference (ft)	Offset (ft)	Highside Toolface (°)	Offset Wellbore Centre +N/-S (ft)	+E/-W (ft)	Between Centres (ft)	Between Ellipses (ft)	Minimum Separation (ft)	Separation Factor	
2,400.0	2,322.2	2,358.7	2,322.8	11.7	7.4	145.49	282.2	89.6	461.1	445.5	15.57	29.606	
2,500.0	2,417.3	2,454.9	2,415.2	12.3	7.9	144.26	307.7	96.7	486.8	470.1	16.61	29.300	
2,600.0	2,512.5	2,551.0	2,507.6	12.9	8.4	143.16	333.3	103.8	512.6	495.0	17.66	29.033	
2,700.0	2,607.6	2,647.2	2,600.0	13.6	8.9	142.17	358.9	110.9	538.7	520.0	18.70	28.800	
2,800.0	2,702.8	2,743.3	2,692.4	14.2	9.4	141.27	384.5	118.0	564.9	545.1	19.75	28.594	
2,900.0	2,797.9	2,839.5	2,784.8	14.8	10.0	140.44	410.1	125.1	591.2	570.4	20.81	28.413	
3,000.0	2,893.1	2,935.6	2,877.2	15.5	10.5	139.69	435.6	132.2	617.6	595.7	21.86	28.252	
3,100.0	2,988.2	3,031.7	2,969.6	16.1	11.0	138.99	461.2	139.4	644.1	621.2	22.91	28.109	
3,200.0	3,083.4	3,127.9	3,062.0	16.8	11.5	138.36	486.8	146.5	670.7	646.7	23.97	27.981	
3,300.0	3,178.5	3,224.0	3,154.4	17.4	12.0	137.77	512.4	153.6	697.3	672.3	25.02	27.866	
3,400.0	3,273.7	3,320.2	3,246.8	18.0	12.6	137.22	537.9	160.7	724.0	697.9	26.08	27.763	
3,500.0	3,368.8	3,416.3	3,339.2	18.7	13.1	136.71	563.5	167.8	750.8	723.7	27.13	27.669	
3,600.0	3,464.0	3,512.5	3,431.6	19.3	13.6	136.24	589.1	174.9	777.6	749.4	28.19	27.584	
3,700.0	3,559.1	3,608.6	3,524.0	19.9	14.2	135.80	614.7	182.0	804.5	775.2	29.25	27.507	
3,800.0	3,654.3	3,704.7	3,616.4	20.6	14.7	135.39	640.3	189.1	831.4	801.1	30.30	27.436	
3,900.0	3,749.4	3,800.9	3,708.8	21.2	15.2	135.00	665.8	196.2	858.3	827.0	31.36	27.372	
4,000.0	3,844.6	3,897.0	3,801.3	21.9	15.7	134.64	691.4	203.4	885.3	852.9	32.41	27.312	
4,100.0	3,939.7	3,993.2	3,893.7	22.5	16.3	134.29	717.0	210.5	912.3	878.9	33.47	27.258	
4,200.0	4,034.8	4,089.3	3,986.1	23.1	16.8	133.97	742.6	217.6	939.4	904.9	34.53	27.207	
4,300.0	4,130.0	4,185.5	4,078.5	23.8	17.3	133.67	768.1	224.7	966.5	930.9	35.58	27.161	
4,400.0	4,225.1	4,281.6	4,170.9	24.4	17.9	133.38	793.7	231.8	993.5	956.9	36.64	27.118	
4,500.0	4,320.3	4,377.7	4,263.3	25.0	18.4	133.11	819.3	238.9	1,020.7	983.0	37.69	27.077	
4,600.0	4,415.4	4,473.9	4,355.7	25.7	18.9	132.85	844.9	246.0	1,047.8	1,009.0	38.75	27.040	
4,700.0	4,510.6	4,570.0	4,448.1	26.3	19.5	132.60	870.5	253.1	1,075.0	1,035.1	39.81	27.005	
4,800.0	4,605.7	4,666.2	4,540.5	27.0	20.0	132.37	896.0	260.2	1,102.1	1,061.3	40.86	26.973	
4,900.0	4,700.9	4,762.3	4,632.9	27.6	20.5	132.15	921.6	267.3	1,129.3	1,087.4	41.92	26.942	
5,000.0	4,796.0	4,858.5	4,725.3	28.2	21.1	131.94	947.2	274.5	1,156.5	1,113.5	42.97	26.914	
5,100.0	4,891.2	4,954.6	4,817.7	28.9	21.6	131.73	972.8	281.6	1,183.7	1,139.7	44.03	26.887	
5,128.7	4,918.4	4,982.2	4,844.2	29.1	21.7	131.68	980.1	283.6	1,191.5	1,147.2	44.33	26.880	
5,200.0	4,986.6	5,050.9	4,910.2	29.5	22.1	131.80	998.4	288.7	1,210.4	1,165.3	45.08	26.849	
5,300.0	5,083.0	5,147.6	5,003.2	29.9	22.7	131.84	1,024.1	295.8	1,234.9	1,188.9	46.07	26.803	
5,400.0	5,180.2	5,255.3	5,107.2	30.3	23.1	131.77	1,051.1	303.3	1,256.9	1,209.9	46.98	26.753	
5,500.0	5,278.2	5,365.0	5,214.1	30.6	23.6	131.70	1,074.7	309.9	1,275.7	1,227.9	47.77	26.706	
5,600.0	5,376.8	5,475.9	5,323.1	30.9	23.9	131.65	1,094.5	315.4	1,291.3	1,242.9	48.46	26.648	
5,700.0	5,475.9	5,587.7	5,433.7	31.2	24.2	131.61	1,110.4	319.8	1,303.7	1,254.7	49.04	26.582	
5,800.0	5,575.5	5,700.3	5,545.6	31.4	24.5	131.59	1,122.1	323.1	1,312.8	1,263.3	49.52	26.509	
5,900.0	5,675.3	5,813.4	5,658.4	31.5	24.7	131.57	1,129.6	325.2	1,318.6	1,268.8	49.89	26.431	
6,000.0	5,775.2	5,926.8	5,771.7	31.6	24.9	131.56	1,132.9	326.1	1,321.1	1,271.0	50.15	26.344	
6,024.8	5,800.0	5,954.8	5,799.8	31.7	24.9	90.63	1,133.0	326.1	1,321.2	1,271.0	50.20	26.321	
6,100.0	5,875.2	6,030.1	5,875.1	31.7	25.0	90.63	1,133.0	326.1	1,321.2	1,270.9	50.35	26.241	
6,200.0	5,975.2	6,130.1	5,975.1	31.8	25.1	90.63	1,133.0	326.1	1,321.2	1,270.7	50.56	26.131	
6,300.0	6,075.2	6,230.1	6,075.1	31.9	25.2	90.63	1,133.0	326.1	1,321.2	1,270.5	50.78	26.020	
6,400.0	6,175.2	6,330.1	6,175.1	32.0	25.3	90.63	1,133.0	326.1	1,321.2	1,270.2	51.00	25.908	
6,500.0	6,275.2	6,430.1	6,275.1	32.1	25.4	90.63	1,133.0	326.1	1,321.2	1,270.0	51.22	25.796	
6,600.0	6,375.2	6,530.1	6,375.1	32.2	25.5	90.63	1,133.0	326.1	1,321.2	1,269.8	51.44	25.684	
6,700.0	6,475.2	6,630.1	6,475.1	32.3	25.6	90.63	1,133.0	326.1	1,321.2	1,269.6	51.67	25.571	
6,800.0	6,575.2	6,730.1	6,575.1	32.4	25.8	90.63	1,133.0	326.1	1,321.2	1,269.3	51.90	25.457	
6,900.0	6,675.2	6,830.1	6,675.1	32.5	25.9	90.63	1,133.0	326.1	1,321.2	1,269.1	52.13	25.343	
6,924.8	6,700.0	6,854.9	6,699.8	32.5	25.9	90.63	1,133.0	326.1	1,321.2	1,269.0	52.19	25.315	

<b>Company:</b>	BONANZA CREEK ENERGY OPERATING	<b>Local Co-ordinate Reference:</b>	Well North Platte 34-33
<b>Project:</b>	SEC.4-T4N-R63W	<b>TVD Reference:</b>	WELL @ 4548.5ft (Original Well Elev)
<b>Reference Site:</b>	Latham 41-4 Pad Sec.4-T4N-R63W	<b>MD Reference:</b>	WELL @ 4548.5ft (Original Well Elev)
<b>Site Error:</b>	0.0ft	<b>North Reference:</b>	True
<b>Reference Well:</b>	North Platte 34-33	<b>Survey Calculation Method:</b>	Minimum Curvature
<b>Well Error:</b>	0.0ft	<b>Output errors are at</b>	2.00 sigma
<b>Reference Wellbore</b>	Wellbore #1	<b>Database:</b>	Landmark
<b>Reference Design:</b>	Plan #1 (1-28-11)	<b>Offset TVD Reference:</b>	Offset Datum

Reference Depths are relative to WELL @ 4548.5ft (Original Well Elev) Coordinates are relative to: North Platte 34-33  
 Offset Depths are relative to Offset Datum Coordinate System is US State Plane 1983, Colorado Northern Zone  
 Central Meridian is 105° 30' 0.000 W ° Grid Convergence at Surface is: 0.69°



<b>Company:</b>	BONANZA CREEK ENERGY OPERATING	<b>Local Co-ordinate Reference:</b>	Well North Platte 34-33
<b>Project:</b>	SEC.4-T4N-R63W	<b>TVD Reference:</b>	WELL @ 4548.5ft (Original Well Elev)
<b>Reference Site:</b>	Latham 41-4 Pad Sec.4-T4N-R63W	<b>MD Reference:</b>	WELL @ 4548.5ft (Original Well Elev)
<b>Site Error:</b>	0.0ft	<b>North Reference:</b>	True
<b>Reference Well:</b>	North Platte 34-33	<b>Survey Calculation Method:</b>	Minimum Curvature
<b>Well Error:</b>	0.0ft	<b>Output errors are at</b>	2.00 sigma
<b>Reference Wellbore</b>	Wellbore #1	<b>Database:</b>	Landmark
<b>Reference Design:</b>	Plan #1 (1-28-11)	<b>Offset TVD Reference:</b>	Offset Datum

Reference Depths are relative to WELL @ 4548.5ft (Original Well Elev) Coordinates are relative to: North Platte 34-33  
 Offset Depths are relative to Offset Datum Coordinate System is US State Plane 1983, Colorado Northern Zone  
 Central Meridian is 105° 30' 0.000 W ° Grid Convergence at Surface is: 0.69°

