



Mesa Wireline

# CEMENT BOND LOG

Company	ENCANA OIL & GAS (USA)		
Well	KNIGHT 12-5		
Field	MAMM CREEK		
County	GARFIELD		
State	COLORADO		
Company	ENCANA OIL & GAS (USA)	Well	KNIGHT 12-5
Field	MAMM CREEK	County	GARFIELD
State	COLORADO	Location:	API # : 05045683200000
SEC: 22	TWP: 07S	RGE: 92W	Other Services
1678' FNL & 1161' FWL			NONE
Permanent Datum	GROUND LEVEL	Elevation	6388'
Log Measured From	GROUND LEVEL	K.B. 6402'	D.F. 6401'
Drilling Measured From	KELLY BUSHING = 14 FT	G.L. 6388'	

Date	14 JAN 2010				
Run Number	TWO				
Depth Driller	5800'				
Depth Logger	1626'				
Bottom Logged Interval	1625'				
Top Log Interval	SURFACE				
Open Hole Size	7.875"				
Type Fluid	WATER				
Density / Viscosity	~8.34#				
Max. Recorded Temp.	N/A				
E estimated Cement Top	N/A				
Time Well Ready	N/A				
Time Logger on Bottom	N/A				
Equipment Number	ST0501/RBT04				
Location	GRAND JUNCTION				
Recorded By	D. SOLIS				
Witnessed By	S. SANDERS				
Borehole Record					
Run Number	Bit	From	To	Size	To
N/A				N/A	
Tubing Record					
Casing Record	Size	Wd/Ft	Top	Bottom	
Surface String	8.625"	24#	SURFACE	437'	
P rot. String					
P roduction String	4.5"	11.6#	SURFACE	5786'	
Liner					

<<< Fold Here >>>

All interpretations are opinions based on inferences from electrical or other measurements and we cannot and do not guarantee the accuracy or correctness of any interpretation, and we shall not, except in the case of gross or willful negligence on our part, be liable or responsible for any loss, costs, damages, or expenses incurred or sustained by anyone resulting from any interpretation made by any of our officers, agents or employees. These interpretations are also subject to our general terms and conditions set out in our current Price Schedule.

## Comments

RBT-GR RAN IN COMBINATION.  
CORRELATED TO MESA WIRELINE CBL DATED: 12 JAN 2010.  
TAGGED HIGH AT 1626'.  
RETAINER WAS SET AT 1900'.

WE APPRECIATE YOUR BUSINESS, MESA WIRELINE LLC, GRAND JUNCTION CO. (970) 257-0



## MAIN LOG SECTION

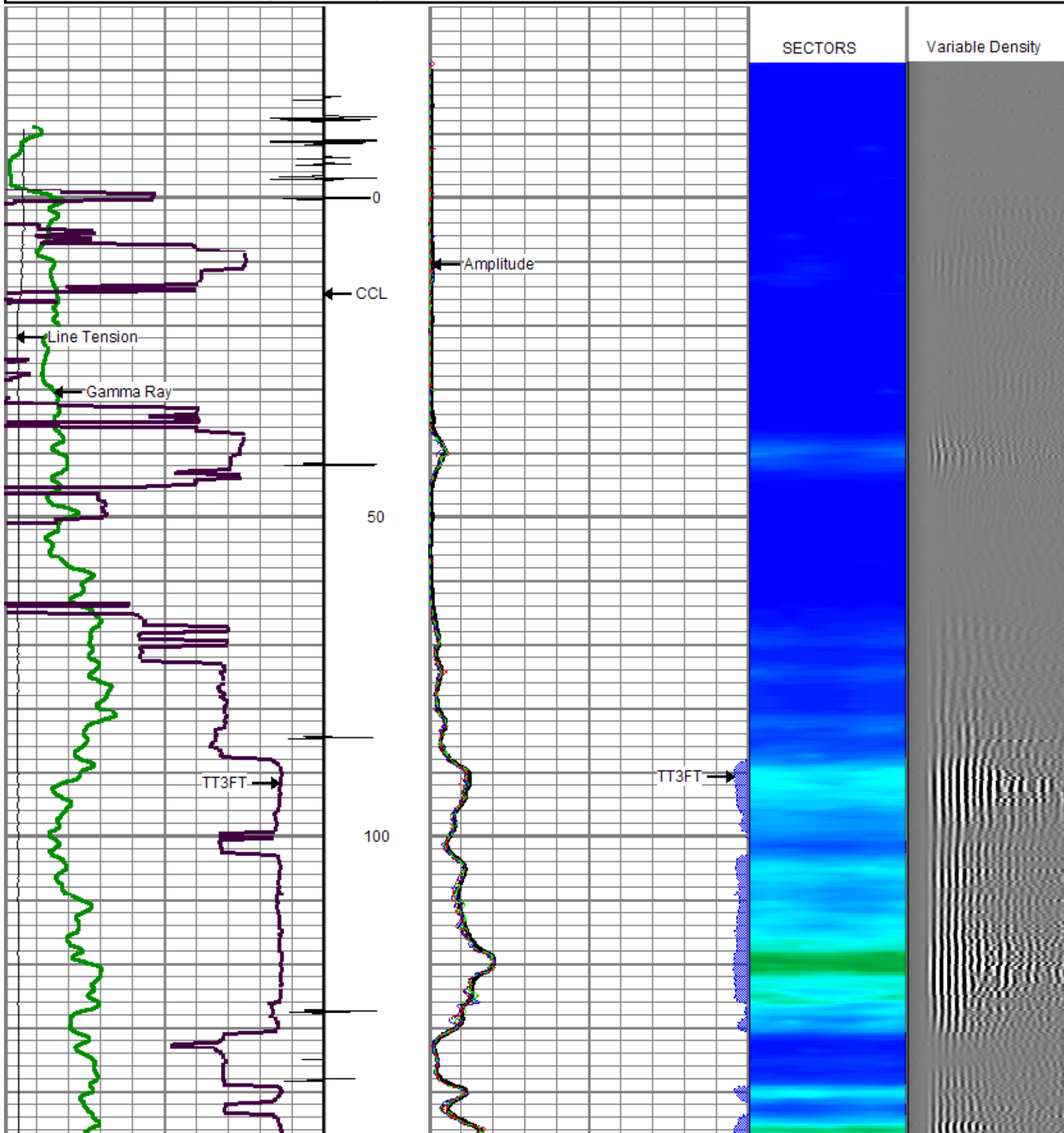
Database File: e\_knight12-5sqz.cbl.db  
 Dataset Pathname: pass4  
 Presentation Format: rbt\_fin  
 Dataset Creation: Thu Jan 14 11:48:45 2010  
 Charted by: Depth in Feet scaled 1:240

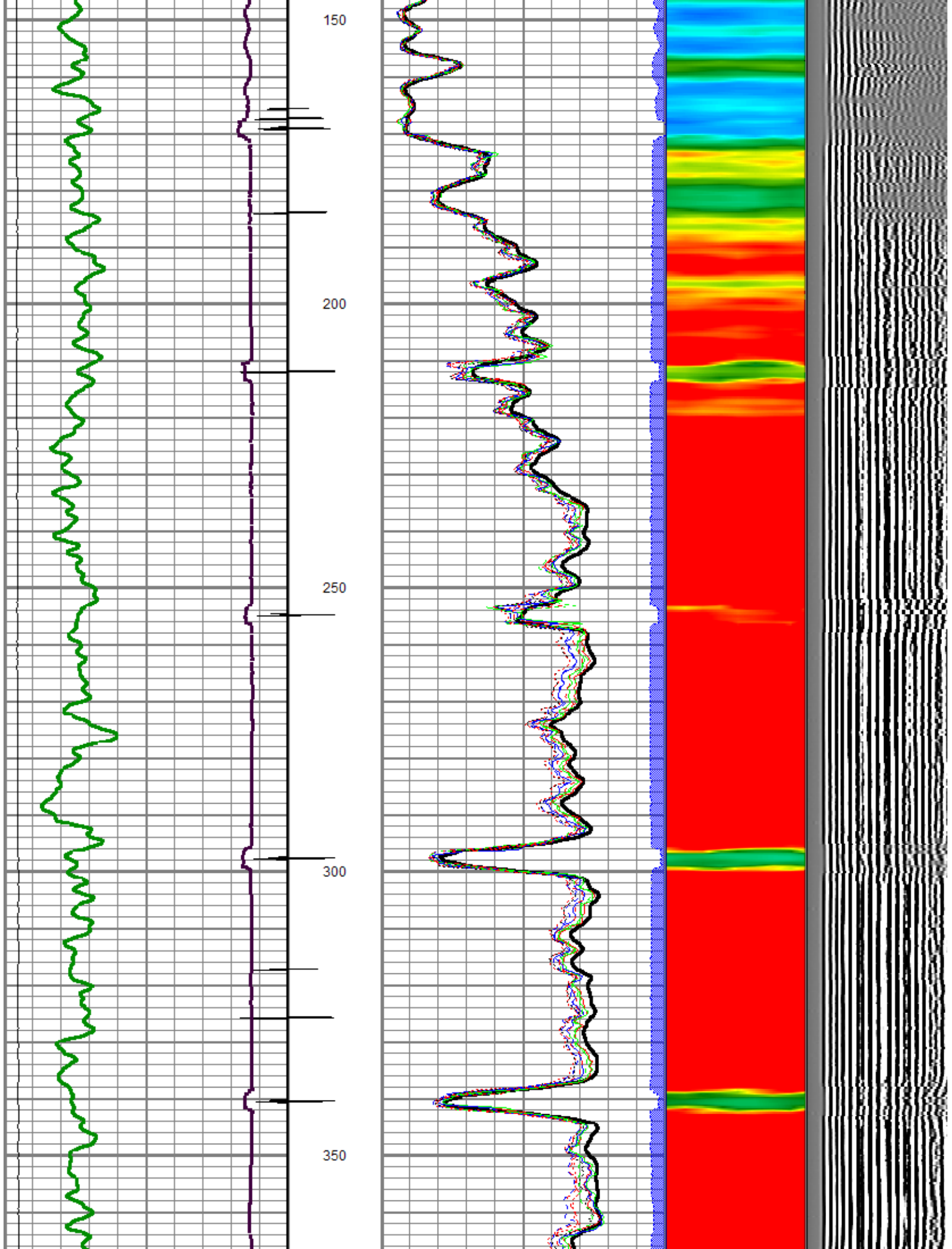
0	LTEN (lb)	4000
0	GR (GAPI)	200
400	TT3FT (usec)	160

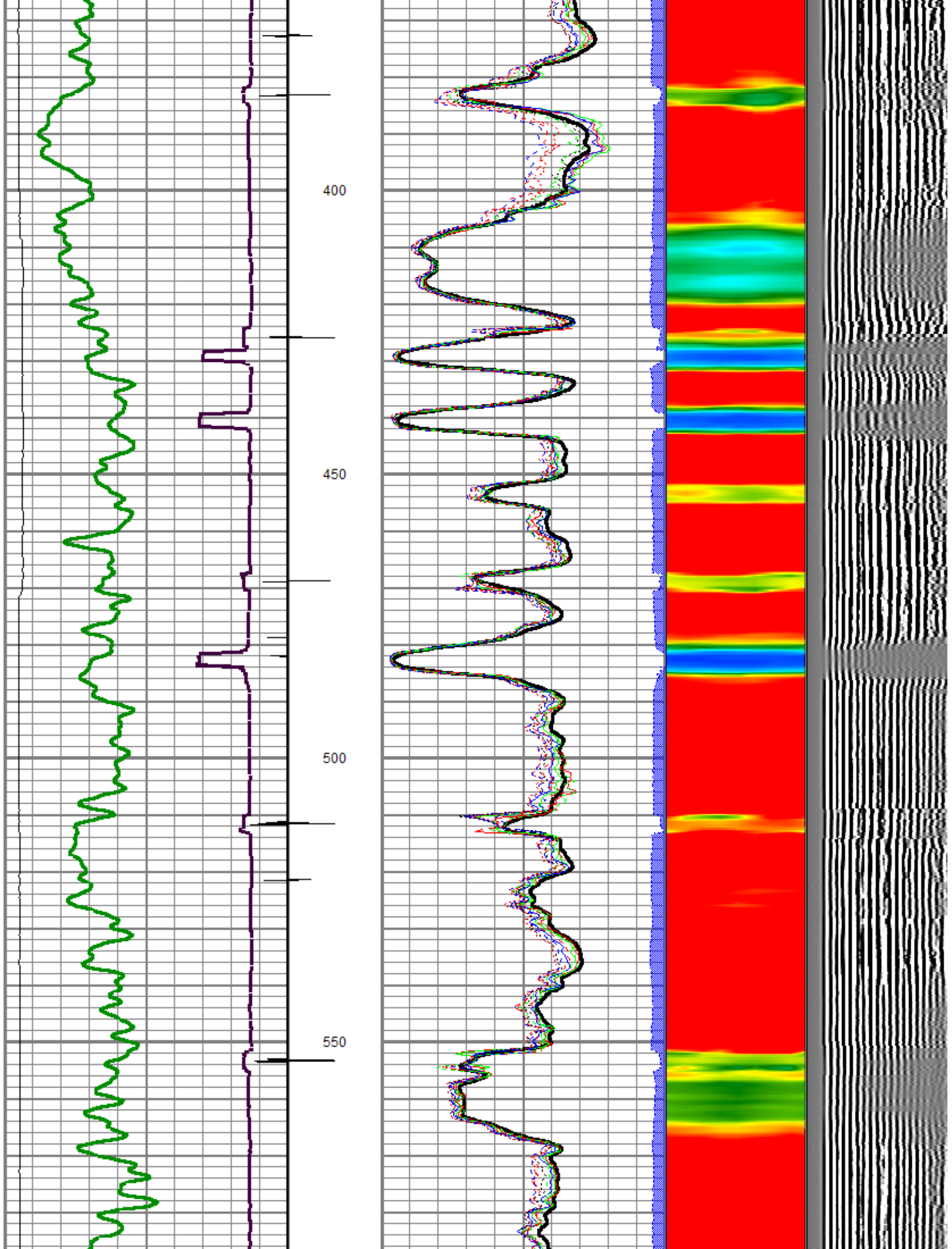
CCL

0	Amplitude (mV)	100
0	TT3FT (usec)	200

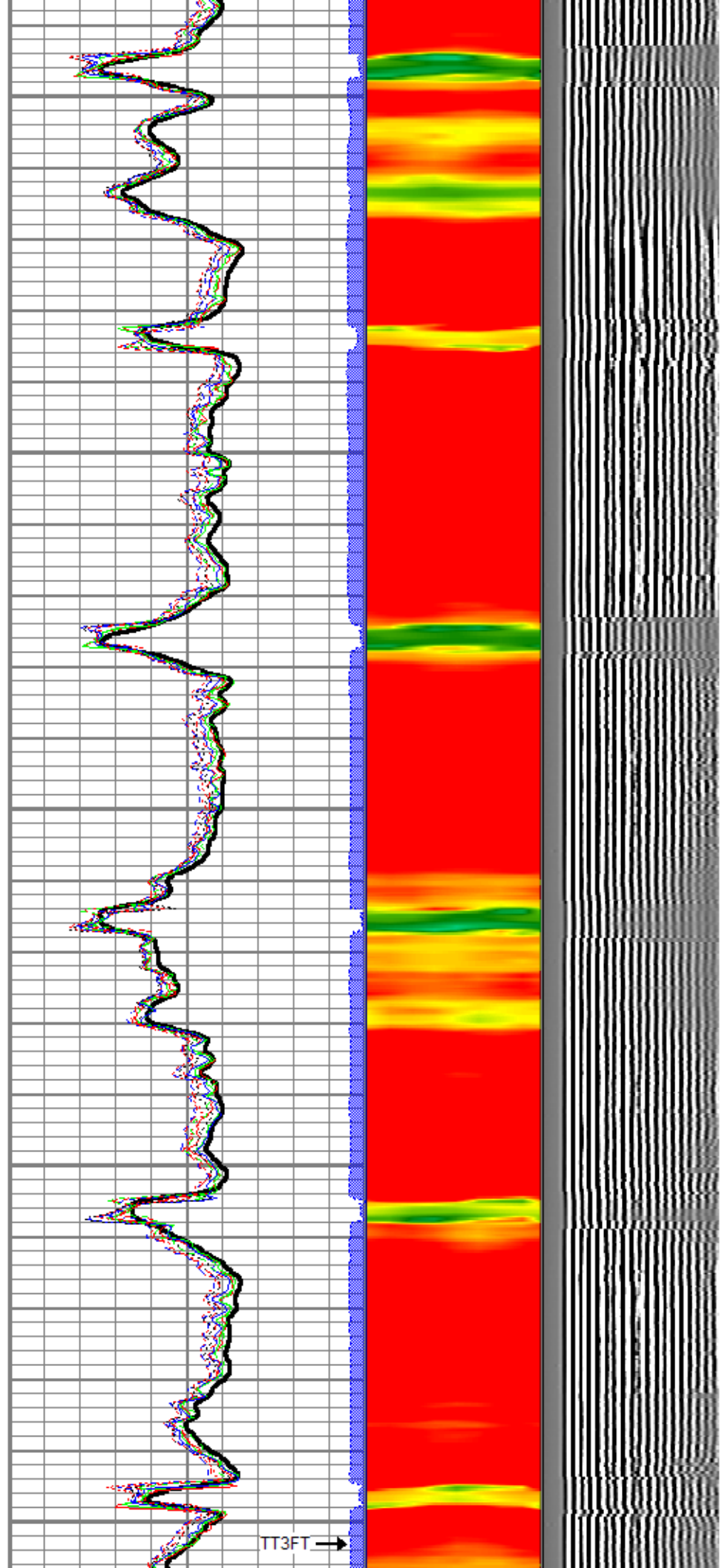
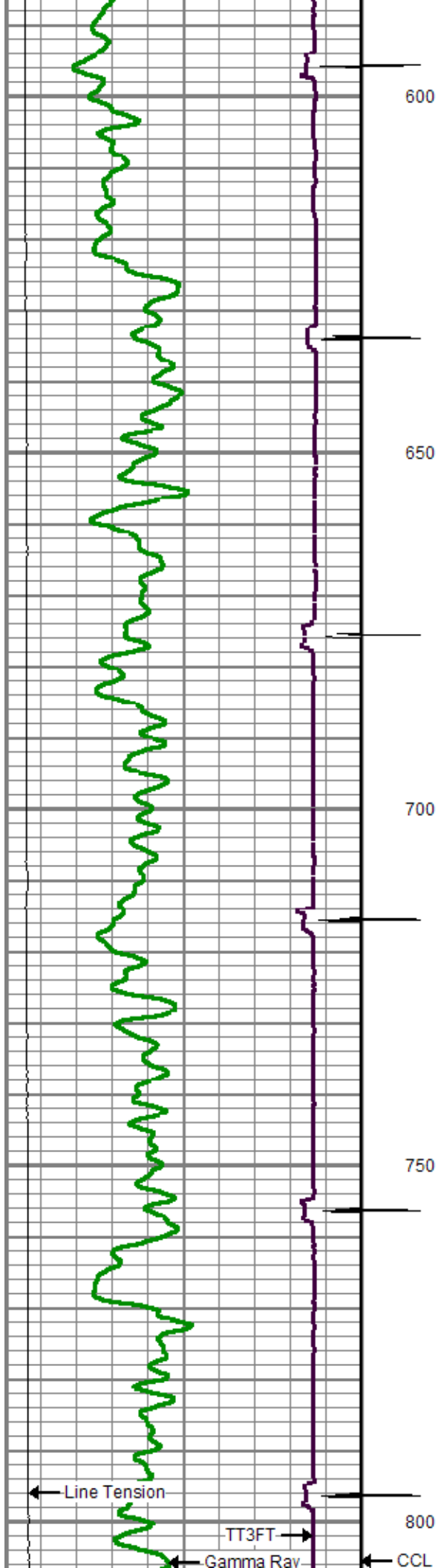
1	SECTORS	8	Variable Density
0		70	200 1200

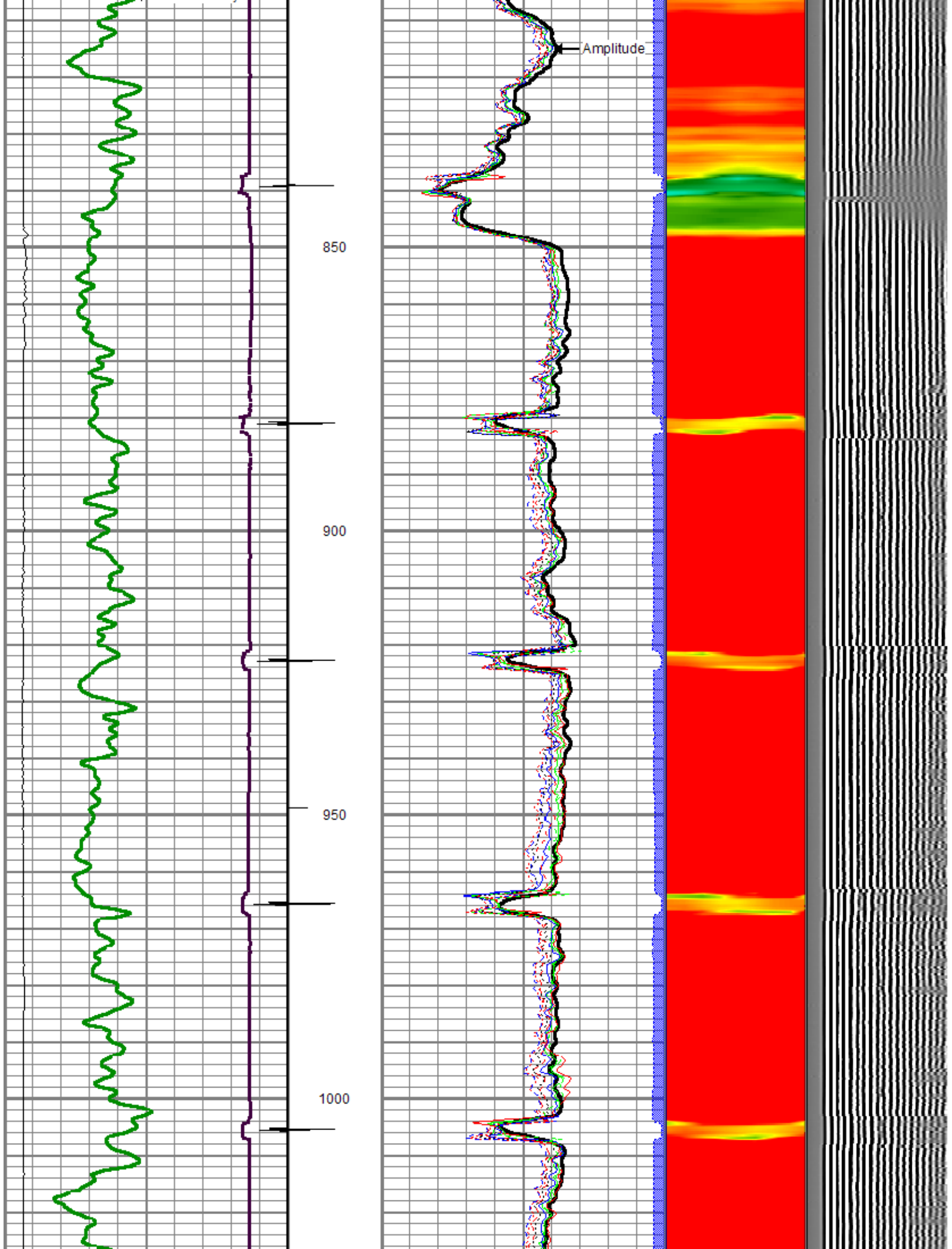


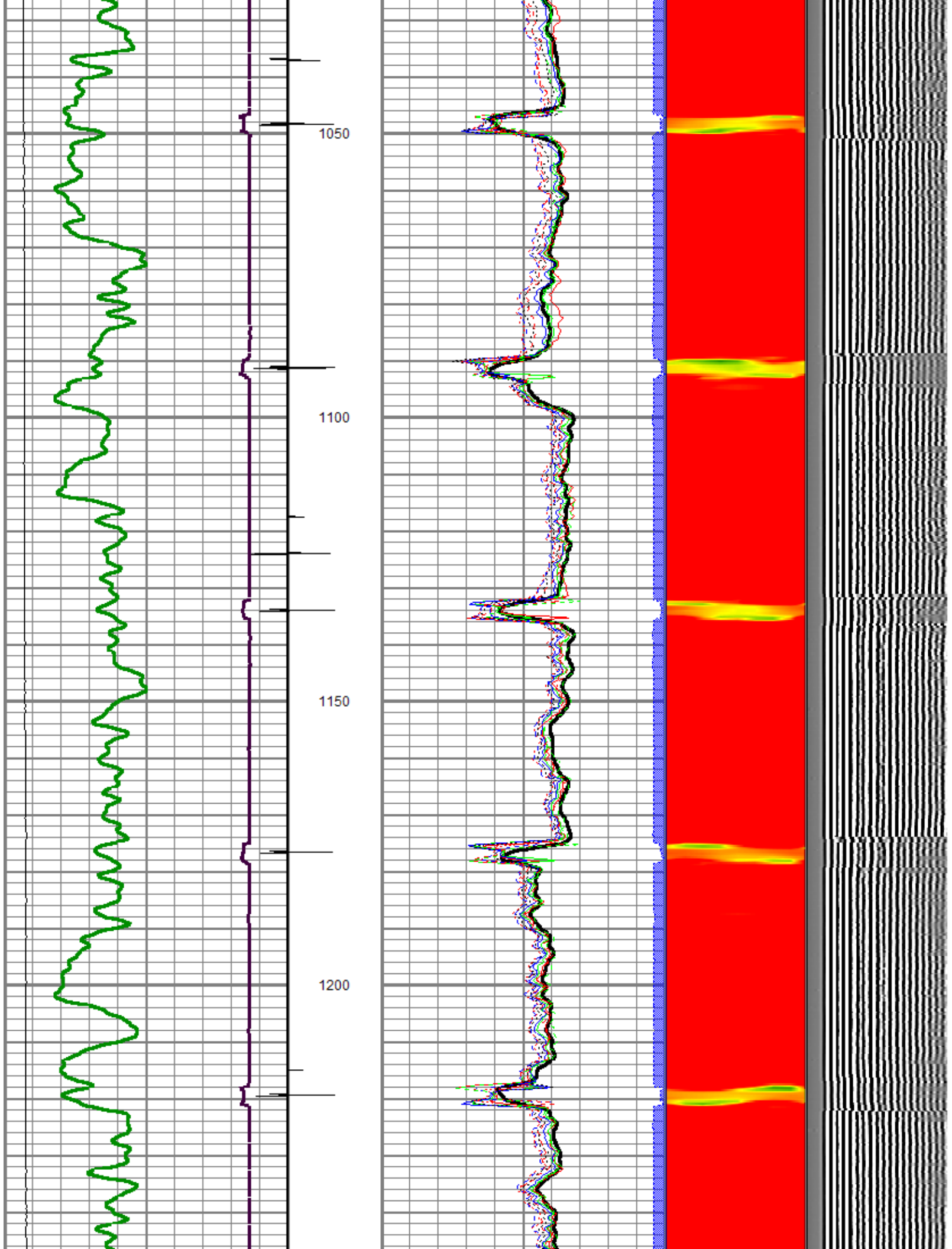


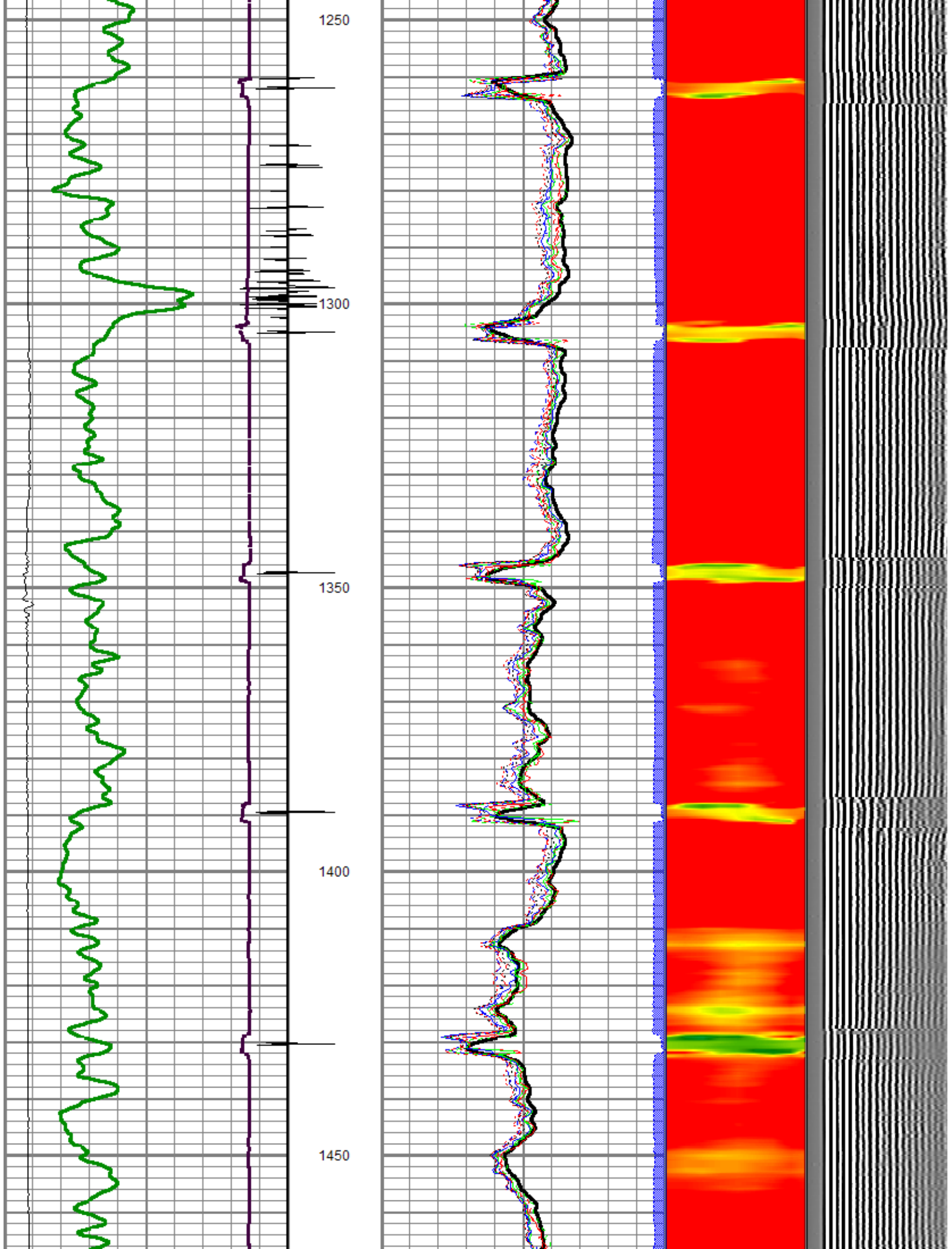




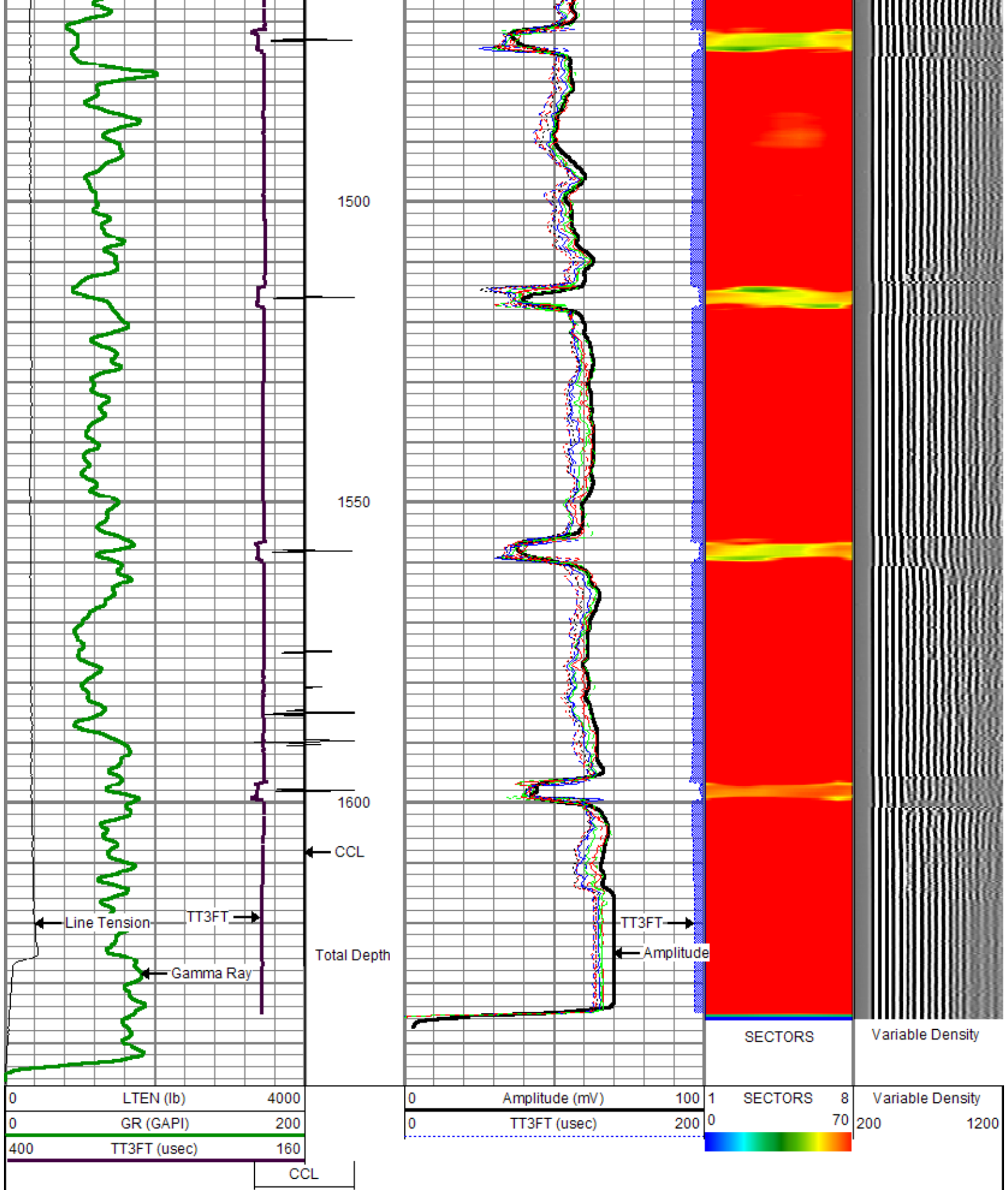


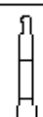


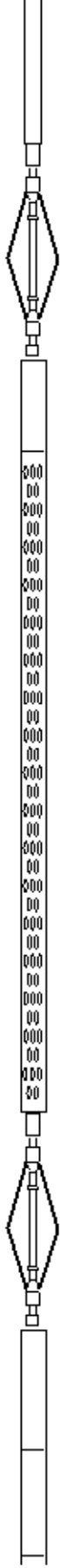

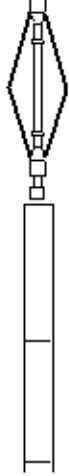








Sensor	Offset (ft)	Schematic	Description	Len (ft)	OD (in)	Wt (lb)
			titan	1.00	1.69	2.00

CCL	18.54		SNDX_CCL-SNDX_3_13_CCL (000001) CSS Gamma Ray/CCL (CCL Section)	1.92	3.13	11.02
			SONDEX	2.71	2.75	32.00
WVFS3FT	10.78		SNDX_RBT-007 (000004) Radial Bond Tool - Analog 3 1/8	9.47	3.13	140.00
WVFS1	10.78					
WVFS2	10.78					
WVFS3	10.78					
WVFS4	10.78					
WVFS5	10.78					
WVFS6	10.78					
WVFS7	10.78					
WVFS8	10.78					
WVFS5FT	9.78					
			SONDEX	2.71	2.75	32.00
GR	2.03		SNDX_GR-SNDX_3_13_GR (000001) Sondex Production Gamma Ray	2.94	3.13	22.05
Dataset: e_knight12-5sqzcbi.db: field/well/run1/pass4 Total Length: 20.75 ft Total Weight: 239.07 lb O.D. 3.13 in						



Company  
Well

ENCANA OIL & GAS (USA)  
KNIGHT 12-5



Well	KNIGHT 12-3
Field	MAMM CREEK
County	GARFIELD
State	COLORADO