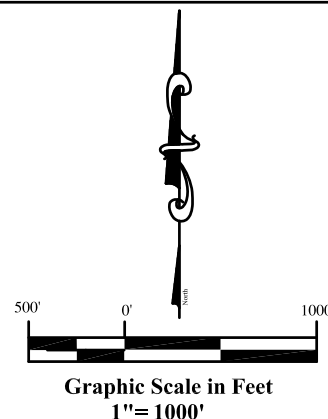
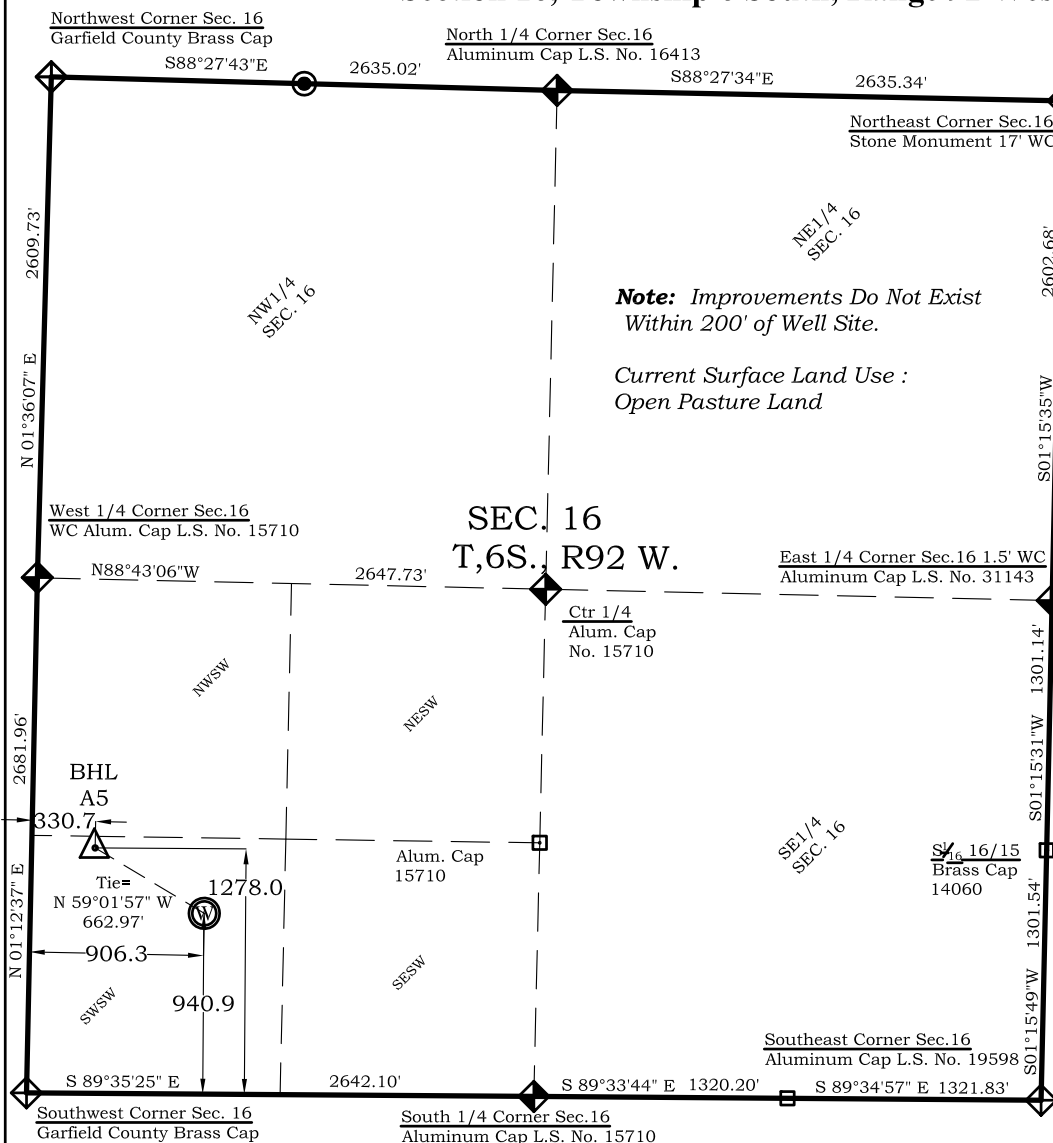


# LEFT HAND FEDERAL A5

## Well Location Plat

### Section 16, Township 6 South, Range 92 West



#### Legend

- ◆ - Field Surveyed Section Corner
- ◆ - Field Surveyed Quarter Corner
- ⊙ - Calculated Section Corner Location
- ◆ - Field Surveyed 1/6 Corner

#### Bottom Hole: Left Hand A5

1278' FSL  
331' FWL  
**NAD83**  
Lat: 39.522968337°N  
Long: 107.680011261°W  
**NAD27**  
Lat: 39.522987801°N  
Long: 107.679395600°W

#### Surface: Left Hand A5

941' FSL  
906' FWL  
Gnd El= 5684.0'  
Pad El= 5683.5'  
**NAD83**  
Lat: 39.522078915°N  
Long: 107.677961593°W  
**NAD27**  
Lat: 39.522098375°N  
Long: 107.677346020°W  
UTM 13 NORTH  
**NAD 1983**  
NORTHING  
14363946.333  
EASTING  
885195.945

**Prepared For Antero Resources:**  
**Proposed LEFT HAND FEDERAL A5 Well Situate in**  
**The SW1/4 Section 16, Township 6 South, Range 92**  
**West of the 6th. Principal Meridian, County of Garfield,**  
**State of Colorado.**

#### SURVEYOR'S CERTIFICATE

I, SCOTT E. AIBNER, A REGISTERED LAND SURVEYOR, LICENSED UNDER THE LAWS OF THE STATE OF COLORADO DO HEREBY CERTIFY THAT THE SURVEY SHOWN HEREON WAS PREPARED BY RIVER VALLEY SURVEY, INC., FOR ANTERO RESOURCES, BY ME OR UNDER MY DIRECT SUPERVISION AND HAS BEEN STAKED ON THE GROUND AS SHOWN ON THIS PLAT AND THAT THIS PLAT IS A TRUE REPRESENTATION THEREOF.

BY:   
SCOTT E. AIBNER, COLORADO REG. NO. 31143

#### Notes:

1. LATITUDE AND LONGITUDE COORDINATES ARE DIFFERENTIALLY CORRECTED AND BASED ON PUBLISHED NGS CONTROL STATION "WDP-5". SYSTEM: UTM ZONE: 13 NORTH DATUM: NAD 1983 (CONUS)
2. ELEVATIONS ARE BASED ON NAVD OF 1983.
3. ALL BOTTOM AND TOP HOLE LOCATIONS ARE MEASURED 90 DEGREES FROM SECTION LINE.
4. USGS QUADRANGLE MAP "GIBSON GULCH".
5. CURRENT SURFACE LAND USE: OPEN RANGE LAND.
6. PDOP AT THE TIME OF LOCATION OF SURFACE WELL = 2.5



**River Valley Survey, Inc.**  
110 East 3rd. Street, Suite 213  
Rifle, Colorado 81650  
Ph: 970-379-7846

**Project: LEFT HAND A PAD**

**Field Date: 01-04-11**

**Date: 02-22-11**

**Scale: 1"= 1000'**

**Sheet: 1 of 11**

**Well Location Plat**  
**Prepared For Antero Resources**

**Situate In:**  
SW1/4 Section 16, T6S., R. 92 W. of the  
6th P.M., Garfield County, Colorado

