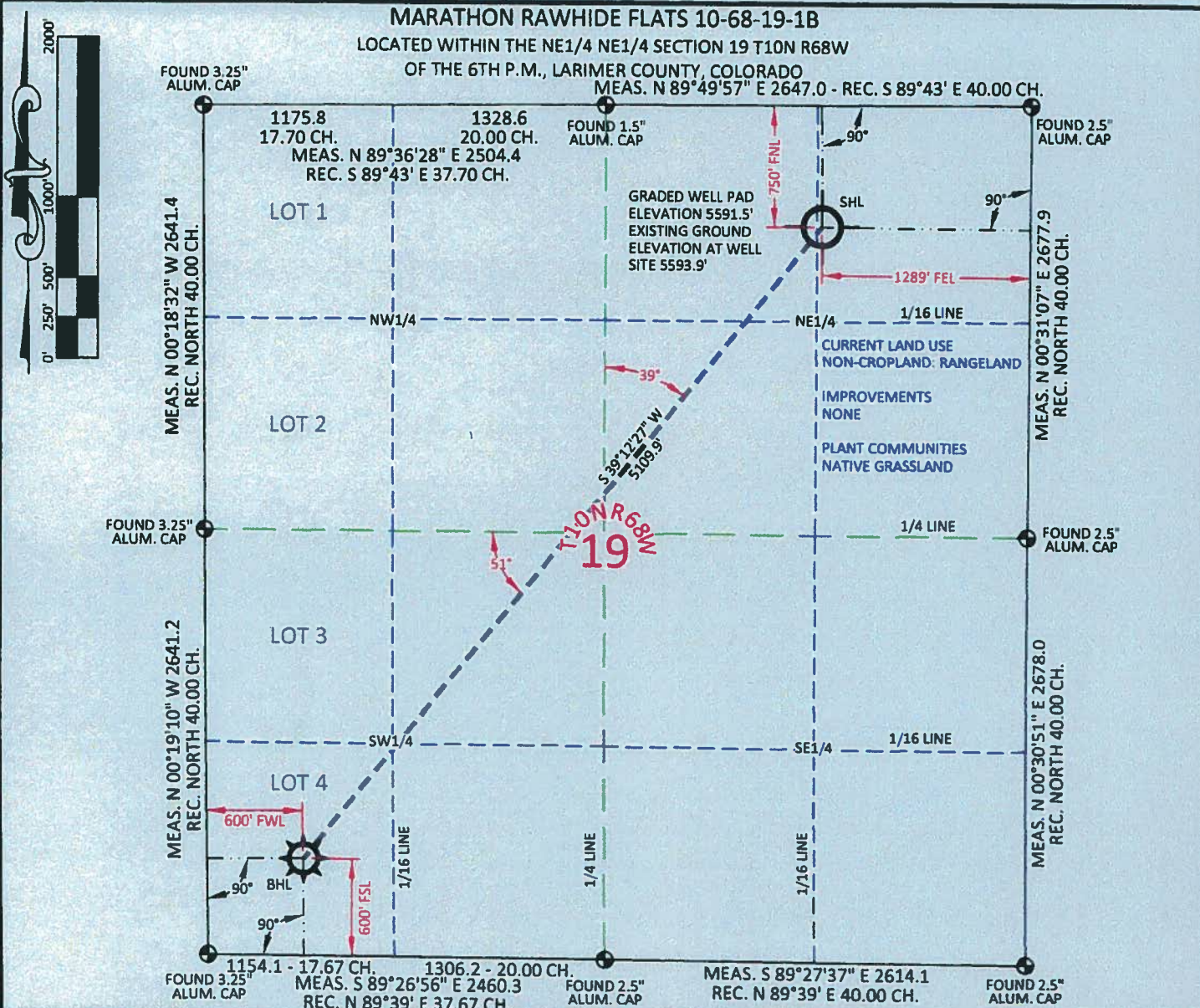


# MARATHON RAWHIDE FLATS 10-68-19-1B

LOCATED WITHIN THE NE1/4 NE1/4 SECTION 19 T10N R68W

OF THE 6TH P.M., LARIMER COUNTY, COLORADO

MEAS. N 89°49'57" E 2647.0 - REC. S 89°43' E 40.00 CH.



SURFACE HOLE LOCATION		BOTTOM HOLE LOCATION	
LAT.	40.824975°	LAT.	40.814152°
LONG.	105.043191°	LONG.	105.054933°
LAT.	40.824992°	LAT.	40.814170°
LONG.	105.042661°	LONG.	105.054403°
LAT.	40°49'29.91"	LAT.	40°48'50.95"
LONG.	105°02'35.49"	LONG.	105°03'17.76"
LAT.	40°49'29.97"	LAT.	40°48'51.01"
LONG.	105°02'33.58"	LONG.	105°03'15.85"
NORTH	1543711.61	NORTH	1539752.17
EAST	3126427.94	EAST	3123197.83
NORTH	543709.00	NORTH	539749.68
EAST	2126577.96	EAST	2123347.94
FOOTAGE: 1289' FEL - 750' FNL		FOOTAGE: 600' FWL - 600' FSL	
MEASURE DATE	03/03/2011	INSTRUMENT OPERATOR	ALLEN BLATEL
PDOP	1.8	SHL GRND ELEV.	5593.9'

**CONFIDENTIALITY NOTES:**  
The information contained in this plat is legally privileged and confidential information intended only for the use of the recipients. If you are not the intended recipients, you are hereby notified that any use, dissemination, distribution or copying of this information is strictly prohibited.

**WILLIAM H. SMITH & ASSOCIATES P.C.**  
SURVEYING CONSULTANTS  
50 EAST SECOND NORTH  
GREEN RIVER, WY 80633  
PHONE: 307-875-3638  
307-875-3639  
www.whsmithpc.com

**LEGEND**

- ⊕ FOUND CORNER
- ⊗ CALCULATED CORNER
- NOTHING FOUND

**LOCATION:**  
RAWHIDE FLATS 10-68-19-1B  
WITHIN THE NE/4  
NE/4 SECTION 19,  
T 10 N, R 68 W,  
6TH PM.  
LARIMER COUNTY,  
COLORADO

**MARATHON OIL COMPANY**  
PO BOX 3128, HOUSTON TX, 77253  
5555 SAN FELIPE, HOUSTON TX, 77056

**WELL LOCATION PLAT**

SCALE: 1"=1000'  
DATE: 03/07/2011

EXHIBIT "A"  
SHEET 1 OF 1

